

(July 1992)

UNITED STATES  
DEPARTMENT OF THE INTERIOR  
BUREAU OF LAND MANAGEMENT  
Oil Cons. DIV-Dist-2  
EXPEDITE  
1301 W. Grand Avenue  
Arlisia, NM 88210

FORM APPROVED  
OMB NO. 1004-0136  
Expires: February 28, 1995  
DESIGNATION AND SERIAL NO.  
NM-29234

a. TYPE OF WORK  
DRILL ☒ DEEPEN ☐

b. TYPE OF WELL  
OIL WELL ☒ GAS WELL ☐ OTHER ☐ 193407  
SINGLE ZONE ☒ MULTIPLE ZONE ☐

c. NAME OF OPERATOR  
RICKS EXPLORATION, INC. (GREG WILKES 915-683-7443)

d. ADDRESS AND TELEPHONE NO.  
110 WEST LOUISIANA SUITE 410 MIDLAND, TEXAS 79701 (915-683-7443)

e. LOCATION OF WELL (Report location clearly and in accordance with any State requirements.)  
At surface  
1836' FSL & 664' FEL SEC. 9 T24S-R31E EDDY CO. NM  
At proposed prod. zone SAME  
W-1 R-111-P Potash

f. DISTANCE IN MILES AND DIRECTION FROM NEAREST TOWN OR POST OFFICE  
Approximately 25 miles East of Carlsbad New Mexico

g. DISTANCE FROM PROPOSED LOCATION TO NEAREST PROPERTY OR LEASE LINE, FT.  
(Also to nearest drlg. unit line, if any) 660'

h. DISTANCE FROM PROPOSED LOCATION TO NEAREST WELL, DRILLING, COMPLETED, OR APPLIED FOR, ON THIS LEASE, FT. 1320'

i. ELEVATIONS (Show whether DF, RT, GR, etc.)  
3459' GR. Carlsbad Controlled Water Basin

7. UNIT AGREEMENT NAME  
3-1001

8. FARM OR LEASE NAME WELL NO.  
LOTOS "C" FEDERAL # 906

9. AM WELL NO.  
30-015-32825

10. FIELD AND POOL, OR WILDCAT  
SAND DUNES DELAWARE-WEST

11. SEC., T., R., M., OR BLK. AND SURVEY OR AREA  
SECTION 9 T24S-R31E

12. COUNTY OR PARISH  
EDDY C.

13. STATE  
NEW MEXICO

22. APPROX. DATE WORK WILL START  
WHEN APPROVED

PROPOSED CASING AND CEMENTING PROGRAM				
SIZE OF HOLE	GRADE SIZE OF CASING	WEIGHT PER FOOT	SETTING DEPTH	QUANTITY OF CEMENT
25"	Conductor	NA	40'	Cement to surface with Redi-mix.
17 1/2"	J-55 13 3/8"	54.5	975'	900 Sx. circulate cement to sur
11"	J-55 8 5/8"	32	4300'	1100 Sx " " " "
7 7/8"	J-55 5 1/2"	17 & 15.5	8500'	1000 Sx. estimate TOC 4000'

1. Drill 25" hole to 40'. Set 40' of 20" conductor and cement to surface with Redi-mix.
2. Drill 17 1/2" hole to 975'. Run and set 975' of 13 3/8" 54.5# J-55 ST&C casing. Cement with 900 Sx. of Class "C" cement + 1/4# Flocele/Sx., + 2% CaCl, circulate cement to surface.
3. Drill 11" hole to 4300'. Run and set 4300' of 8 5/8" 32# J-55 ST&C casing. Cement with 600 Sx. of Class "C" Light Cement + additives, tail in with 500 Sx. of Class "C" cement + 1/4# Flocele/Sx., + 2% CaCl, circulate cement to surface.
4. Drill 7 7/8" hole to 8500'. Run and set 8500' of 5 1/2" casing as follows: 2500' of 5 1/2" 17# J-55 LT&C, 5000' of 5 1/2" 15.5# J-55 LT&C, 1000' of 5 1/2" 17# J-55 LT&C. Cement with 600 Sx. of Class "C" Halco Eight cement + additives, tail in with 400 Sx. of Class "C" cement + 1/4# Flocele/Sx., + 2% CaCl, estimate top of cement 4000' from surface.

APPROVAL SUBJECT TO  
GENERAL REQUIREMENTS AND  
SPECIAL STIPULATIONS  
ATTACHED

BOVE SPACE DESCRIBE PROPOSED PROGRAM: If proposal is to deepen, give location of proposed new productive zone. If proposal is to drill or directionally give pertinent data on subsurface locations and measured and true vertical depth of blowout prevention program, if any.

SIGNED Robert J. Janice TITLE Agent DATE 03/01/03

(This space for Federal or State office use)

PERMIT NO. \_\_\_\_\_ APPROVAL DATE \_\_\_\_\_

Application approval does not warrant or certify that the applicant holds legal or equitable title to those rights in the subject lease which would entitle the applicant to conduct operations thereon.

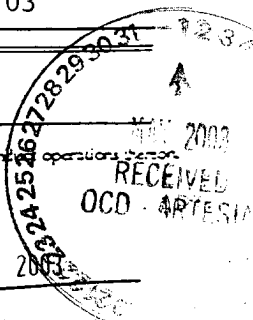
CONDITIONS OF APPROVAL, IF ANY:

APPROVED BY WILLIAM E.P. RUNDALL TITLE STATE DIRECTOR DATE APR 25 2003

\*See Instructions On Reverse Side

APPROVAL FOR 1 YEAR

18 U.S.C. Section 1001, makes it a crime for any person knowingly and willfully to make to any department or agency of the United States any false, fictitious or fraudulent statements or representations as to any matter within its jurisdiction.



DISTRICT I  
1625 N. French Dr., Hobbs, NM 88240

DISTRICT II  
811 South First, Artesia, NM 88210

DISTRICT III  
1000 Rio Brazos Rd., Aztec, NM 87410

DISTRICT IV  
2040 South Pacheco, Santa Fe, NM 87505

State of New Mexico  
Energy, Minerals and Natural Resources Department

Form C-102  
Revised March 17, 1999

Submit to Appropriate District Office  
State Lease - 4 Copies  
Fee Lease - 3 Copies

OIL CONSERVATION DIVISION

2040 South Pacheco  
Santa Fe, New Mexico 87504-2088

☐ AMENDED REPORT

WELL LOCATION AND ACREAGE DEDICATION PLAT

API Number	Pool Code 53815	Pool Name SAND DUNES DELAWARE-WEST
Property Code	Property Name LOTOS "C" FEDERAL	Well Number 906
OGRID No. 193407	Operator Name RICKS EXPLORATION, INC.	Elevation 3459'

Surface Location

UL or lot No. 1	Section 9	Township 24-S	Range 31 E	Lot Idn	Feet from the 1836	North/South line SOUTH	Feet from the 664	East/West line EAST	County EDDY
--------------------	--------------	------------------	---------------	---------	-----------------------	---------------------------	----------------------	------------------------	----------------

Bottom Hole Location If Different From Surface

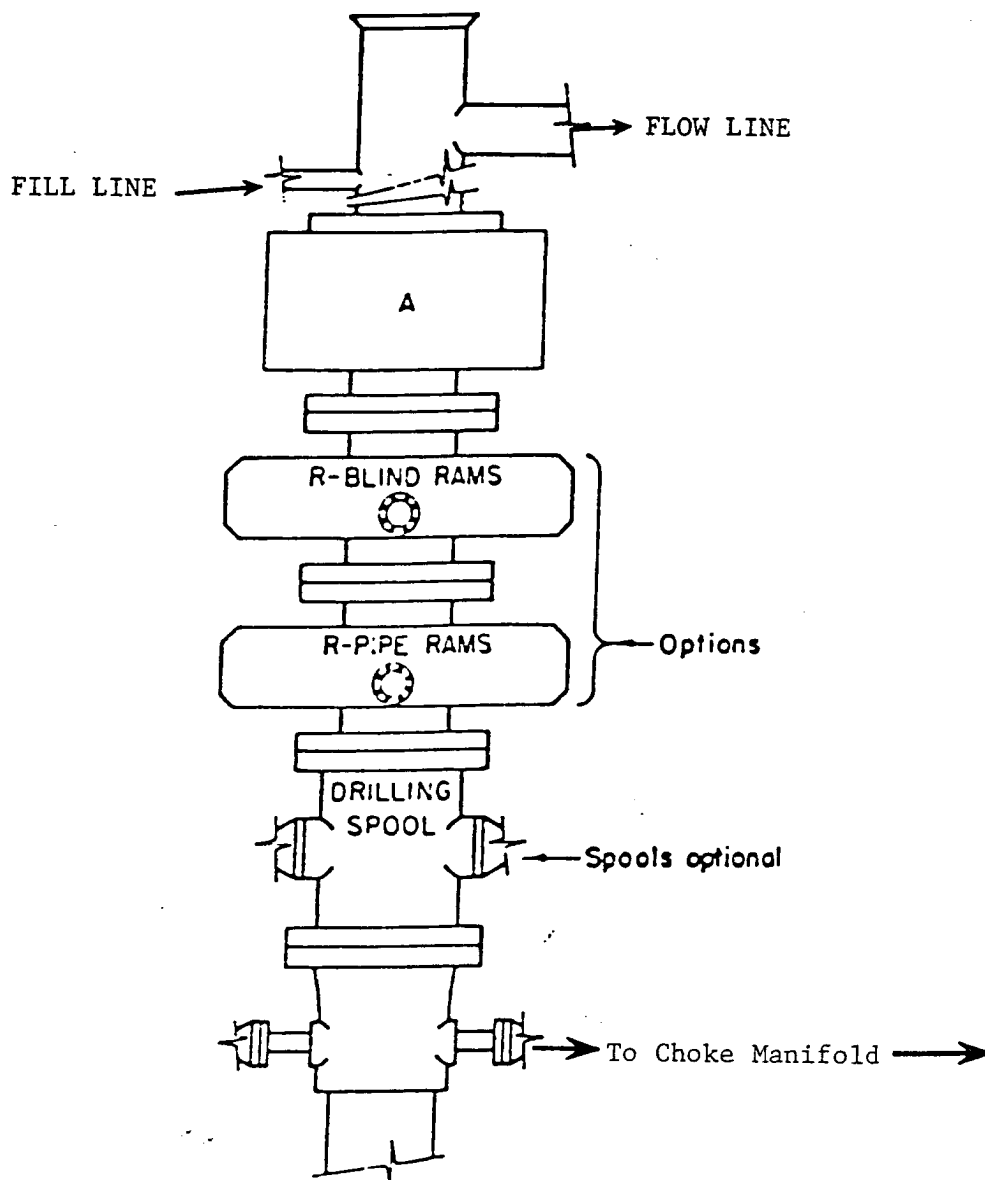
UL or lot No.	Section	Township	Range	Lot Idn	Feet from the	North/South line	Feet from the	East/West line	County
---------------	---------	----------	-------	---------	---------------	------------------	---------------	----------------	--------

Dedicated Acres 40	Joint or Infill	Consolidation Code	Order No.
-----------------------	-----------------	--------------------	-----------

NO ALLOWABLE WILL BE ASSIGNED TO THIS COMPLETION UNTIL ALL INTERESTS HAVE BEEN CONSOLIDATED  
OR A NON-STANDARD UNIT HAS BEEN APPROVED BY THE DIVISION

	<p><b>OPERATOR CERTIFICATION</b></p> <p>I hereby certify the the information contained herein is true and complete to the best of my knowledge and belief.</p> <p><i>Joe T. Janica</i> Signature</p> <p>Joe T. Janica Printed Name</p> <p>Agent</p> <p>Title</p> <p>03/01/03 Date</p>
	<p><b>SURVEYOR CERTIFICATION</b></p> <p>I hereby certify that the well location shown on this plat was plotted from field notes of actual surveys made by me or under my supervision, and that the same is true and correct to the best of my belief.</p> <p>February 20, 2003 Date Surveyed</p> <p><i>Gary L. Jones</i> Signature &amp; Seal of Professional Surveyor</p> <p>W.O. No. 3033</p> <p>Certificate No. Gary L. Jones 7977</p> <p>BASIN SURVEYS</p>

EXHIBIT "A"



# **ARRANGEMENT SRRA**

900 Series  
3000 PSI WP

EXHIBIT "E"  
SKETCH OF B.O.P. TO BE USED ON

RICKS EXPLORATION, INC.  
LOTOS "C" FEDERAL # 906  
UNIT "I" SECTION 9  
T24S-R31E EDDY CO. NM

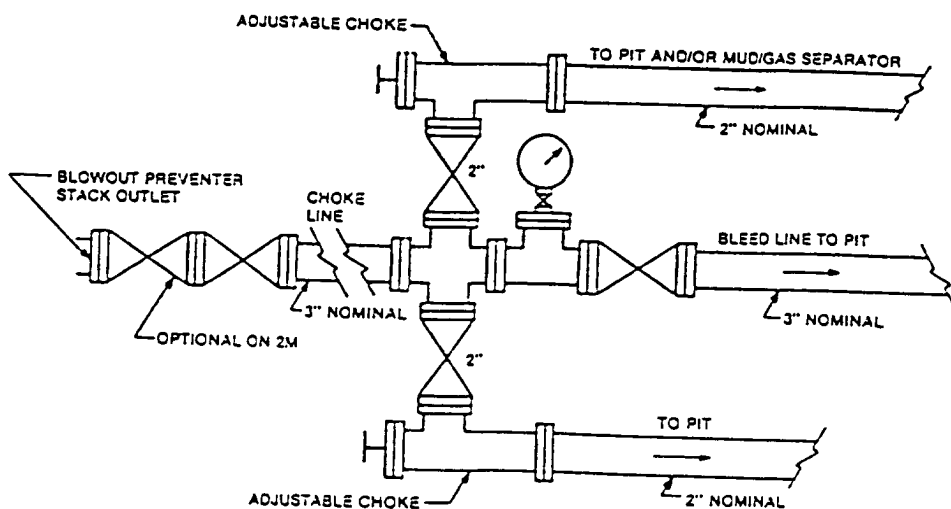


FIGURE K4-1. Typical choke manifold assembly for 2M and 3M rated working pressure service — surface installation.

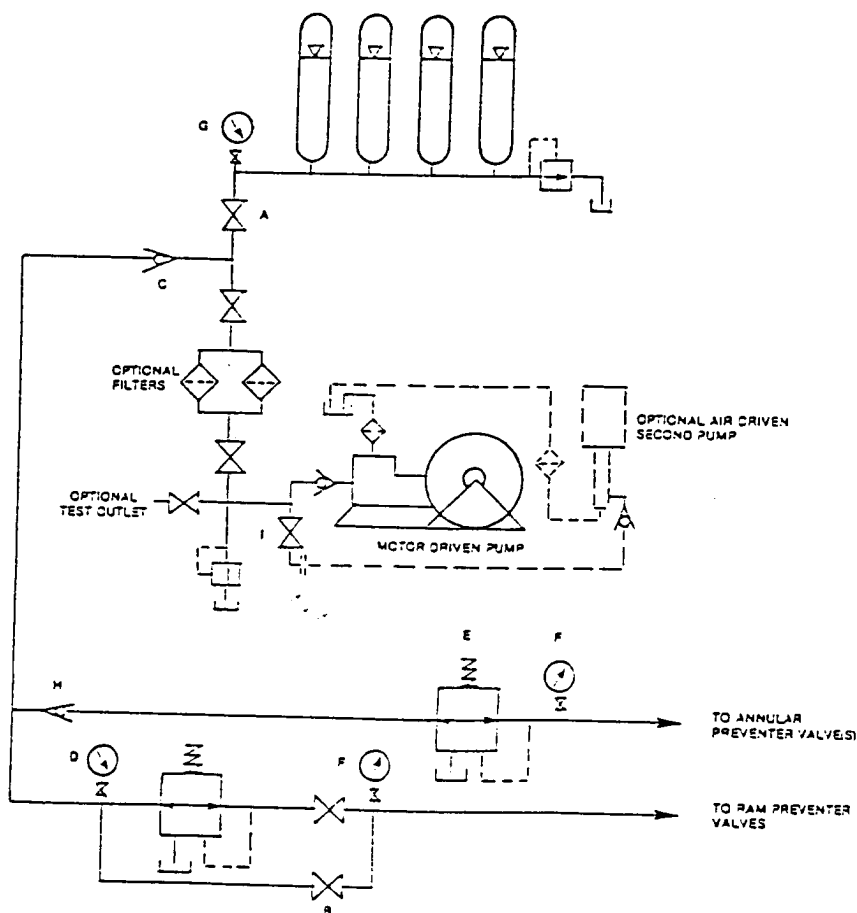


FIGURE K6-1. The schematic sketch of an accumulator system shows required and optional components.

EXHIBIT "E-1"  
CHOKE MANIFOLD & CLOSING UNIT

RICKS EXPLORATION, INC.  
LOTOS "C" FEDERAL # 906  
UNIT "I" SECTION 9  
T24S-R31E EDDY CO. NM



# NEW MEXICO ENERGY, MINERALS and NATURAL RESOURCES DEPARTMENT

**BILL RICHARDSON**

Governor

**Joanna Prukop**

Cabinet Secretary

**Lori Wrotenbery**

Director

**Oil Conservation Division**

May 2, 2003

Bureau of Land Management  
620 East Greene St.  
Carlsbad, NM 88220-6292  
Attn: Craig Cranston or To Whom It May Concern

**RE: APPLICATION FOR PERMIT TO DRILL IN POTASH AREA**

**OPERATOR:** Ricks Exploration, Inc.  
**LEASE NAME:** Lotos 'C' Federal # 906  
**LOCATION:** SEC. 9, TOWNSHIP 24 SOUTH, RANGE 31 EAST,  
1836' FSL & 664' FEL,  
EDDY COUNTY, NM, NMPM



**PROPOSED DEPTH: 8500'.**

**Dear Craig or To Whom It May Concern,**

The application for permit to drill identified above and approved by the BLM has been received by office of the New Mexico Oil Conservation Division. Pursuit to the provisions of Oil Conservation Division Order R-111-P, please advise this office whether or not this application is within an established Life-of Mine Reserve area filed with and approved by your office. If not, please advise whether it is within the buffer zone established by this order.

Thank you for your assistance.

Sincerely,

**Bryan G. Arrant**

**PES, District II Artesia NMOCD**

**In LMR** Yes \_\_\_\_\_  
**In Buffer Zone** Yes \_\_\_\_\_

**No** ~~\_\_\_\_\_~~  
**No** ~~\_\_\_\_\_~~

**Comments:**

THIS IS A FEDERAL SECTION - SURFACE & MINERALS  
**Signature:** Craig Cranston **Date:** 5-8-03

**Cc: Leslie Theiss**