

1625 N. French Dr., Hobbs, NM 88240
District II
811 South First, Artesia, NM 88210
District III
1000 Rio Brazos Road, Aztec, NM 87410
District IV
2040 South Pacheco, Santa Fe, NM 87505

State of New Mexico
Energy Minerals and Natural Resources

Oil Conservation Division
2040 South Pacheco
Santa Fe, NM 87505

Form C-101
Revised March 17, 1999

Submit to appropriate District Office
State Lease - 6 Copies
Fee Lease - 5 Copies

AMENDED REPORT

APPLICATION FOR PERMIT TO DRILL, RE-ENTER, DEEPEN, PLUGBACK, OR ADD A ZONE

Operator Name and Address UNIT PETROLEUM, COMPANY P.O. BOX 702500 TULSA, OKLAHOMA 74170		COGID Number 1159570
Property Code 16440	Property Name HARROUN COM	API Number 30-015-32808
		Well No. 2

Surface Location

UL or lot no.	Section	Township	Range	Lot Idn	Feet from the	North/South line	Feet from the	East/West line	County
D	33	22S	28E		660'	NORTH	1000'	WEST	EDDY

Proposed Bottom Hole Location If Different From Surface

UL or lot no.	Section	Township	Range	Lot Idn	Feet from the	North/South line	Feet from the	East/West line	County
Proposed Pool 1 DUBLIN RANCH -MORROW (76140)					Proposed Pool 2				

Work Type Code N	Well Type Code G	Cable/Rotary ROTARY	Lease Type Code P	Ground Level Elevation 3027'
Multiple NO	Proposed Depth 12,800'	Formation MORROW	Contractor UNKNOWN	Spud Date WHEN APPROVED

Proposed Casing and Cement Program

Hole Size	Casing Size	Casing weight/foot	Setting Depth	Sacks of Cement	Estimated TOC
25"	20"	NA	40'	Redi-mix	SURFACE
17½"	13 3/8"	48	400'	450 Sx.	"
12¼"	9 5/8"	36	2650'	900 Sx..	"
8 3/4"	7"	26	11,000'	300 Sx.	
6 1/8"	4½"	13.5	12,800'	310 Sx.	

Describe the proposed program. If this application is to DEEPEN or PLUG BACK, give the data on the present productive zone and proposed new productive zone.
Describe the blowout prevention program, if any. Use additional sheets if necessary.

1. Drill 25" hole to 40'. Set 40' of 20" conductor and cement to surface with Redi-mix.
2. Drill 17½" hole to 400'. Run and set 400' of 13 3/8" 48# H-40 ST&C casing. Cement with 450 Sx. of Class "C" cement + additives, circulate cement to surface.
3. Drill 12¼" hole to 2650'. Run and set 2650' of 9 5/8" 36# J-55 ST&C casing. Cement with 900 Sx. of Class "C" cement + additives, Circulate cement to surface.
4. Drill 8 3/4" hole to 11000'. Run and set 11,000' of 26# HCP-110 LT&C casing. Cement with 300 Sx. of Class "H" cement + additives,
5. Drill 6 1/8" hole to 12,800'. Run and set a 2000' 4½" 13.5# P-110 STL liner. Cement with 310 Sx. of Class "H" Cement + additives.

I hereby certify that the information given above is true and complete to the best of my knowledge and belief

Signature: *Joe T. Janica*
Printed name: Joe T. Janica
Title: Agent
Date: 05/28/03
Phone: 505-391-8503

OIL CONSERVATION DIVISION

Approved by: *Sign W. Beem*
Title: District Supervisor
Approval Date: JUN 02 2003
Expiration Date: JUN 02 2004
Conditions of Approval:
Attached ☐

DISTRICT I
P.O. Box 1980, Hobbs, NM 88241-1980

State of New Mexico
Energy, Minerals and Natural Resources Department

Form C-102
Revised February 10, 1994
Submit to Appropriate District Office
State Lease - 4 Copies
Fee Lease - 3 Copies

DISTRICT II
P.O. Drawer DD, Artesia, NM 88211-0719

OIL CONSERVATION DIVISION
P.O. Box 2088
Santa Fe, New Mexico 87504-2088

DISTRICT III
1000 Rio Brazos Rd., Aztec, NM 87410

DISTRICT IV
P.O. BOX 2088, SANTA FE, N.M. 87504-2088

WELL LOCATION AND ACREAGE DEDICATION PLAT

☐ AMENDED REPORT

API Number		Pool Code	Pool Name
		76140	DUBLIN RANCH-MORROW GAS
Property Code	Property Name		Well Number
	HARROUN COM		2
OGRID No.	Operator Name		Elevation
115970	UNIT PETROLEUM COMPANY		3027'

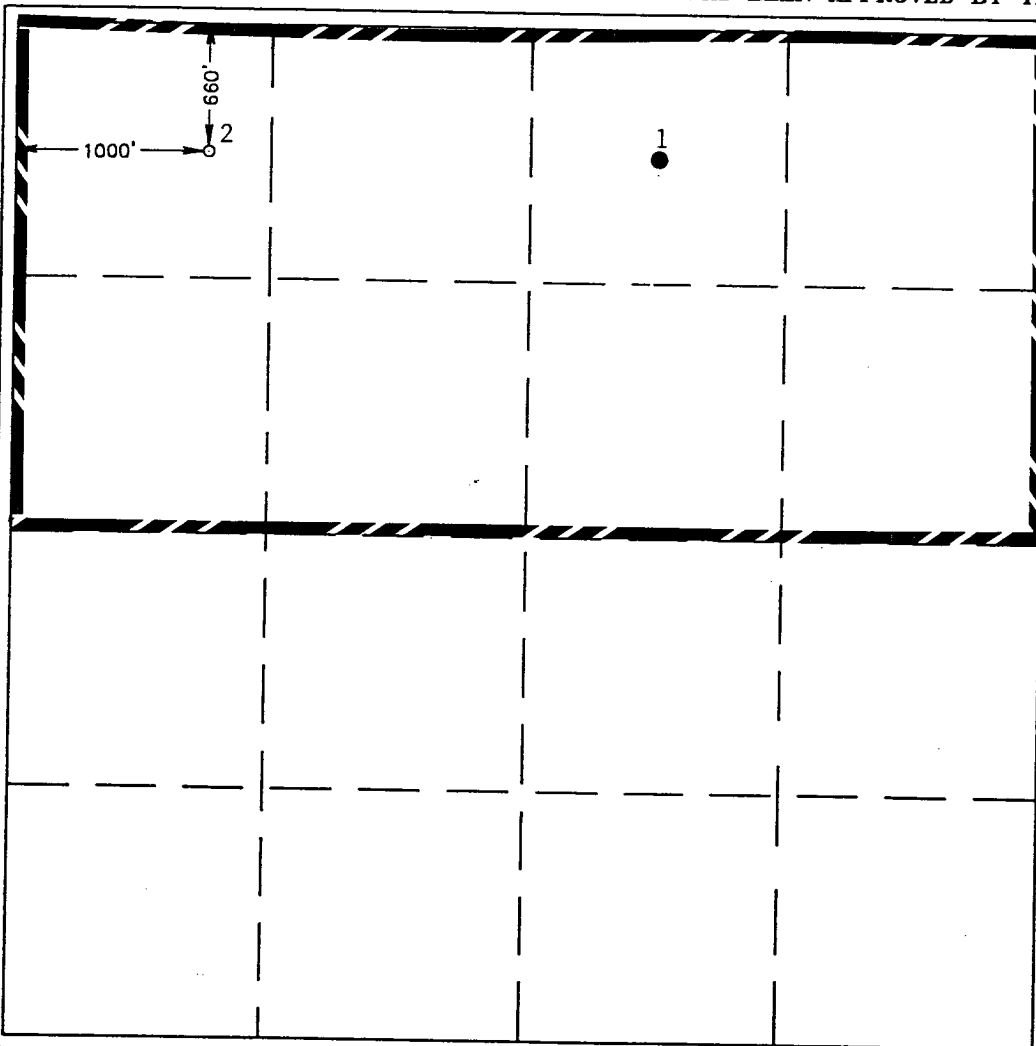
Surface Location

UL or lot No.	Section	Township	Range	Lot Idn	Feet from the	North/South line	Feet from the	East/West line	County
D	33	22-S	28-E		660'	NORTH	1000'	WEST	EDDY

Bottom Hole Location If Different From Surface

UL or lot No.	Section	Township	Range	Lot Idn	Feet from the	North/South line	Feet from the	East/West line	County
Dedicated Acres	Joint or Infill	Consolidation Code	Order No.						
320									

NO ALLOWABLE WILL BE ASSIGNED TO THIS COMPLETION UNTIL ALL INTERESTS HAVE BEEN CONSOLIDATED
OR A NON-STANDARD UNIT HAS BEEN APPROVED BY THE DIVISION



OPERATOR CERTIFICATION

I hereby certify the the information
contained herein is true and complete to the
best of my knowledge and belief.

Joe T. Janica
Signature

Joe T. Janica
Printed Name

Agent
Title

05/28/03

Date

SURVEYOR CERTIFICATION

I hereby certify that the well location shown
on this plat was plotted from field notes of
actual surveys made by me or under my
supervision, and that the same is true and
correct to the best of my belief.

April 15, 2003

Date Surveyed

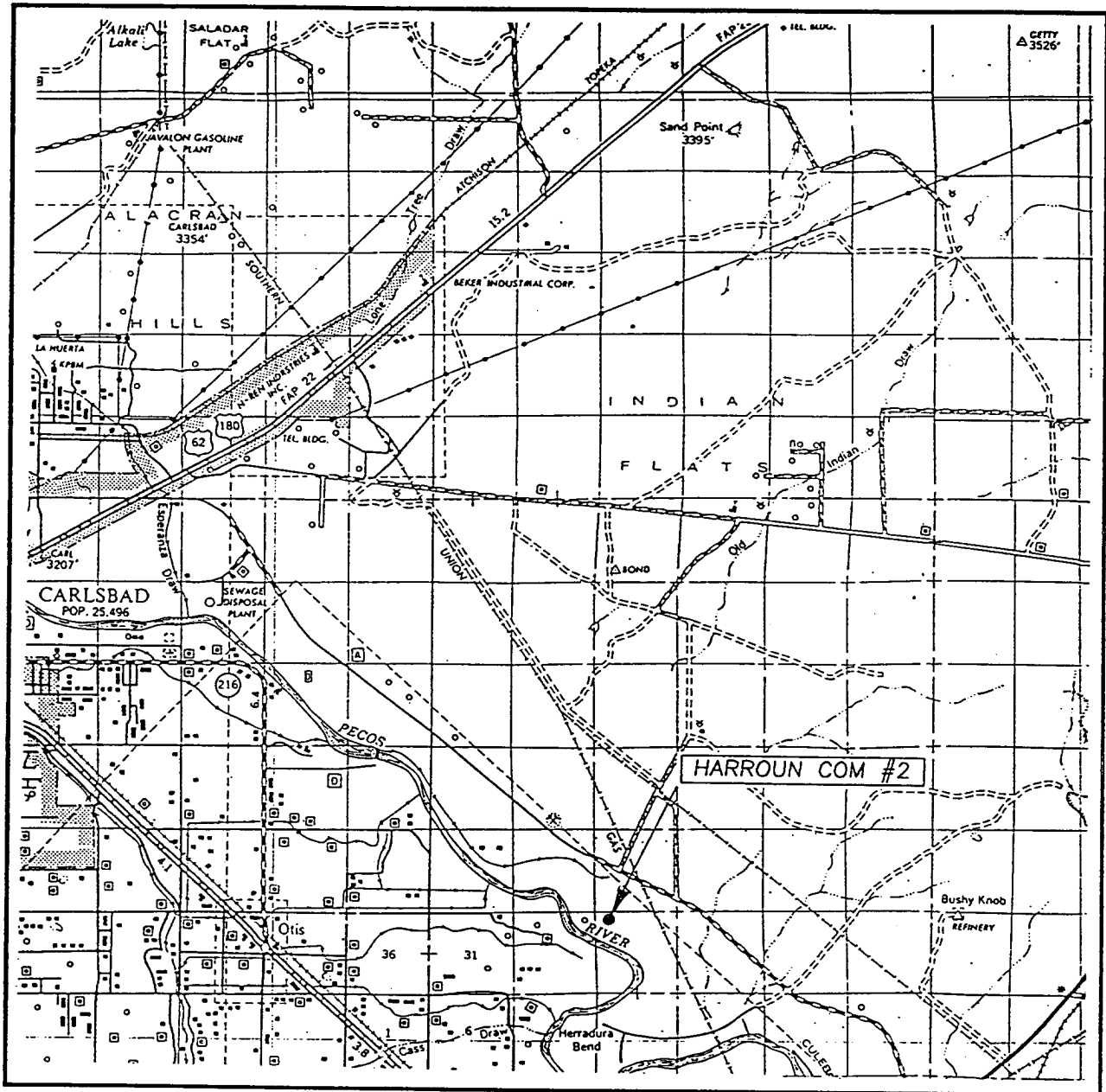
AWB

Signature & Seal of
Professional Surveyor

Ronald J. Edson
RONALD J. EDSON
03.11.0412
4/16/03

Certificate No. RONALD J. EDSON 3239
GARY EDSON 12841

VICINITY MAP



SCALE: 1" = 2 MILES

SEC. 33 TWP. 22-S RGE. 28-E

SURVEY N.M.P.M.

COUNTY EDDY

DESCRIPTION 660' FNL & 1000' FWL

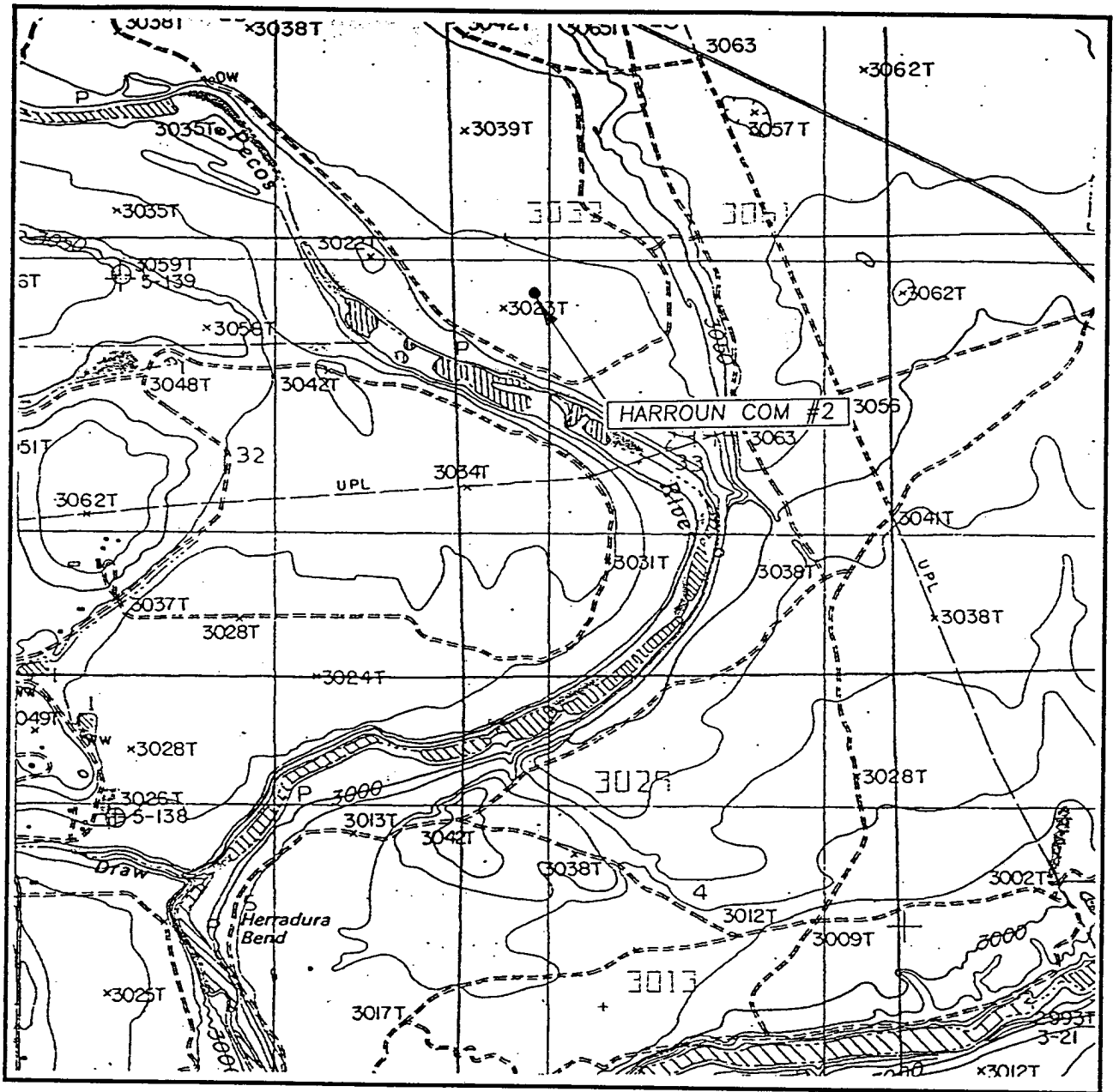
ELEVATION 3027'

OPERATOR UNIT PETROLEUM COMPANY

LEASE HARROUN COM

JOHN WEST SURVEYING
HOBBS, NEW MEXICO
(505) 393-3117

LOCATION VERIFICATION MAP



SCALE: 1" = 2000'

CONTOUR INTERVAL: 10
LOVING, N.M.

SEC. 33 TWP. 22-S RGE. 28-E

SURVEY N.M.P.M.

COUNTY EDDY

DESCRIPTION 660' FNL & 1000' FWL

ELEVATION 3027'

OPERATOR UNIT PETROLEUM COMPANY

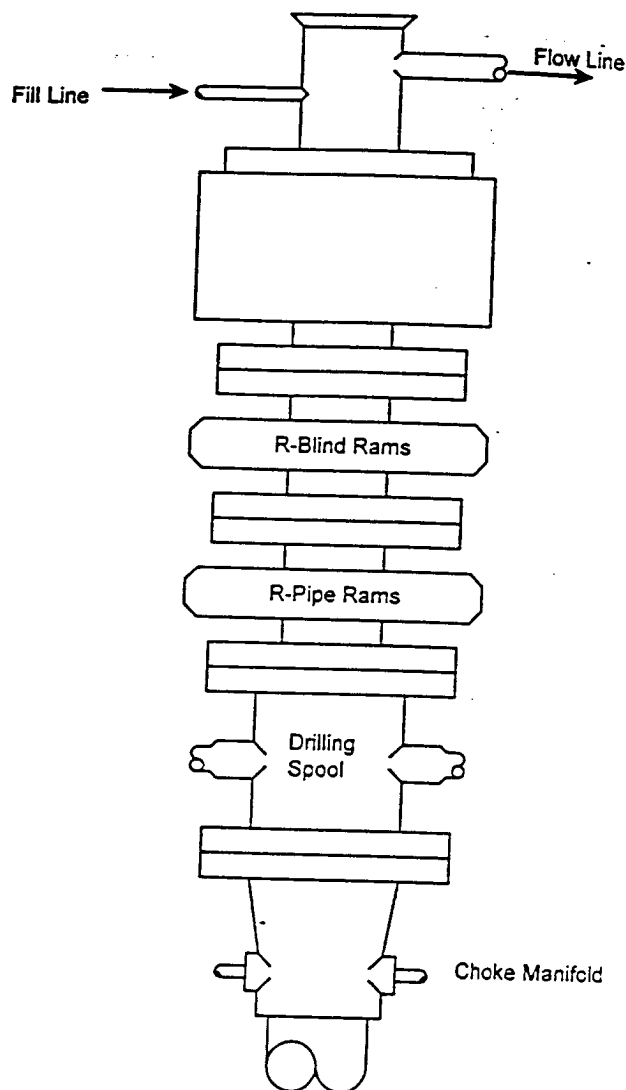
LEASE HARROUN COM

U.S.G.S. TOPOGRAPHIC MAP
LOVING, N.M.

JOHN WEST SURVEYING
HOBBS, NEW MEXICO
(505) 393-3117

BLOWOUT PREVENTER SYSTEM

5000 PSI



Type 1500 SERIES
5000 psi WP

Choke Manifold Assembly for 5M WP System

