

EC

UNITED STATES  
DEPARTMENT OF THE INTERIOR  
BUREAU OF LAND MANAGEMENT

H-15

## APPLICATION FOR PERMIT TO DRILL OR REENTER

1a. Type of Work: <input checked="" type="checkbox"/> DRILL <input type="checkbox"/> REENTER		5. Lease Serial No. NMLC050158	
1b. Type of Well: <input checked="" type="checkbox"/> Oil Well <input type="checkbox"/> Gas Well <input type="checkbox"/> Other <input checked="" type="checkbox"/> Single Zone <input type="checkbox"/> Multiple Zone		6. If Indian, Allottee or Tribe Name	
2. Name of Operator DEVON ENERGY PRODUCTION CO L P		7. If Unit or CA Agreement, Name and No. 28030	
3a. Address 20 NORTH BROADWAY SUITE 1500 OKLAHOMA CITY, OK 73102		8. Lease Name and Well No. EAGLE 35 FEDERAL 13	
3b. Phone No. (include area code) Ph: 405.228.7512 Fax: 405.552.4621		9. API Well No. 30-015-32838	
4. Location of Well (Report location clearly and in accordance with any State requirements.) At surface SENW 1750FNL 2160FWL At proposed prod. zone SENW 1750FNL 2160FWL		10. Field and Pool, or Exploratory RED LAKE; GLORIETA-YESO	
14. Distance in miles and direction from nearest town or post office* APPROX 5 MILES SOUTHEAST OF ARTESIA NM		11. Sec., T., R., M., or Bk. and Survey or Area Sec 35 T17S R27E Mer NMP SME: BLM	
15. Distance from proposed location to nearest property or lease line, ft. (Also to nearest drig. unit line, if any)		12. County or Parish EDDY	
16. No. of Acres in Lease 160.00		13. State NM	
18. Distance from proposed location to nearest well, drilling, completed, applied for, on this lease, ft.		17. Spacing Unit dedicated to this well 40.00	
19. Proposed Depth 4000 MD		20. BLM/BIA Bond No. on file	
21. Elevations (Show whether DF, KB, RT, GL, etc.) 3591 GL		23. Estimated duration 45 DAYS	
22. Approximate date work will start 05/30/2003		24. Attachments ROSWELL CONTROLLED WATER BASIN	

The following, completed in accordance with the requirements of Onshore Oil and Gas Order No. 1, shall be attached to this form:

1. Well plat certified by a registered surveyor.
2. A Drilling Plan.
3. A Surface Use Plan (if the location is on National Forest System Lands, the SUPO shall be filed with the appropriate Forest Service Office).
4. Bond to cover the operations unless covered by an existing bond on file (see Item 20 above).
5. Operator certification
6. Such other site specific information and/or plans as may be required by the authorized officer.

25. Signature (Electronic Submission)	Name (Printed/Typed) KAREN COTTOM	Date 05/12/2003
Title ENGINEERING TECHNICIAN		
Approved by (Signature) /s/ Leslie A. Theiss	Name (Printed/Typed) /s/ Leslie A. Theiss	Date JUN 2003
Title FIELD MANAGER		
Office CARLSBAD FIELD OFFICE		

Application approval does not warrant or certify the applicant holds legal or equitable title to those rights in the subject lease which would entitle the applicant to conduct operations thereon.  
Conditions of approval, if any, are attached.

APPROVAL FOR 1 YEAR

Title 18 U.S.C. Section 1001 and Title 43 U.S.C. Section 1212, make it a crime for any person knowingly and willfully to make to any department or agency of the United States any false, fictitious or fraudulent statements or representations as to any matter within its jurisdiction.

## Additional Operator Remarks (see next page)

Electronic Submission #21658 verified by the BLM Well Information System  
For DEVON ENERGY PRODUCTION CO L P, sent to the Carlsbad  
Committed to AFMSS for processing by Armando Lopez on 05/12/2003 (03AL0276AE)APPROVAL SUBJECT TO  
GENERAL REQUIREMENTS  
AND SPECIAL STIPULATIONS  
ATTACHED

\*\* BLM REVISED \*\* BLM REVISED \*\* BLM REVISED \*\* BLM REVISED \*\* BLM REVISED \*\*

**Additional Operator Remarks:**

Devon Energy proposes to drill a San Andres, Glorieta-Yeso well to TD 4,000' for commercial quantities of oil and gas. If the well is deemed noncommercial, the well bore will be plugged and abandoned per Federal regulations. Devon Energy Production Company, LP will drill the well per the Master Drilling and Surface Use Program submitted for the Red Lake Field.

Directions: From the junction of Co. Rd. 204 and Co. Rd. 258, go south on Co. Rd. 204 from approx 0.25 mile to co. Rd. 225; thence southwesterly on Co. Rd. 225 for approx 1.2 mile to a lease road; thence west and north on lease road for approx 0.2 mile to a point on the proposed well pad.

WITNESS 85/8" CMT JCB

DISTRICT I  
1625 N. French Dr., Hobbs, NM 88240

DISTRICT II  
511 South First, Artesia, NM 88210

DISTRICT III  
1000 Rio Brazos Rd., Aztec, NM 87410

DISTRICT IV  
2040 South Pacheco, Santa Fe, NM 87505

State of New Mexico  
Energy, Minerals and Natural Resources Department

Form C-102  
Revised March 17, 1999

Submit to Appropriate District Office  
State Lease - 4 Copies  
Fee Lease - 3 Copies

OIL CONSERVATION DIVISION

2040 South Pacheco  
Santa Fe, New Mexico 87504-2088

☐ AMENDED REPORT

WELL LOCATION AND ACREAGE DEDICATION PLAT

API Number	Pool Code 51120	Pool Name RED LAKE GLORIETA YESO
Property Code	Property Name EAGLE 35 F FEDERAL	Well Number 13
OGRID No. 6137	Operator Name DEVON ENERGY PRODUCTION CO., L.P.	Elevation 3591'

Surface Location

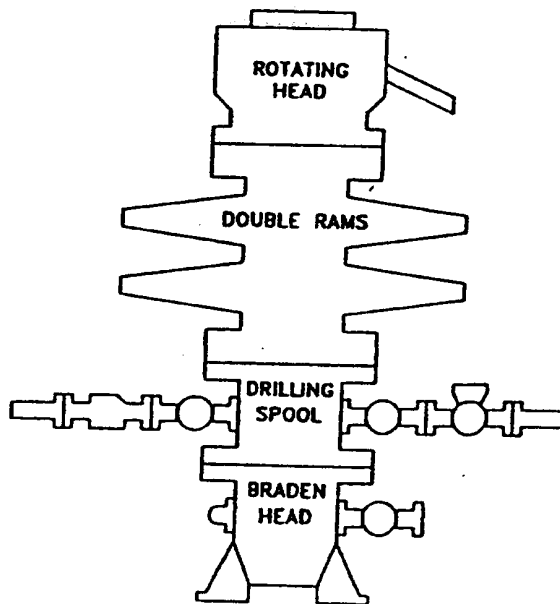
UL or lot No.	Section	Township	Range	Lot Idn	Feet from the	North/South line	Feet from the	East/West line	County
F	35	17 S	27 E		1750	NORTH	2160	WEST	EDDY

Bottom Hole Location If Different From Surface

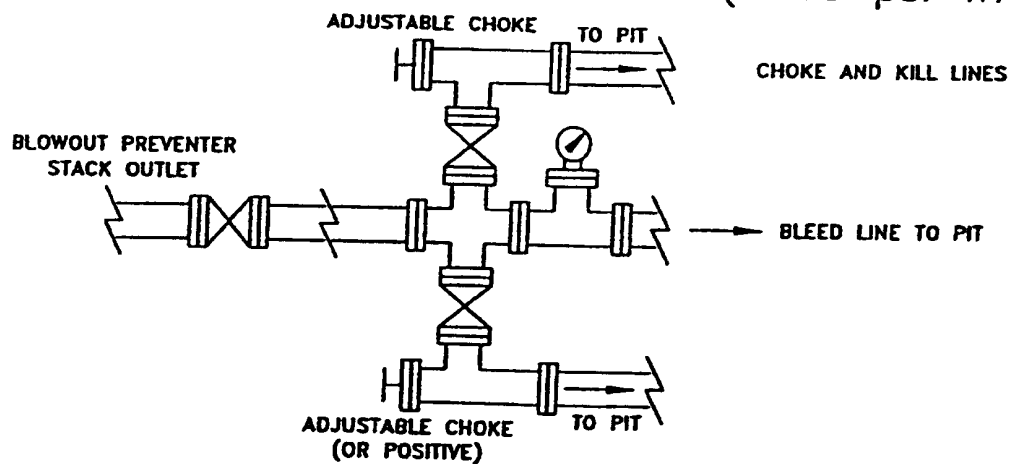
UL or lot No.	Section	Township	Range	Lot Idn	Feet from the	North/South line	Feet from the	East/West line	County
Dedicated Acres 40	Joint or Infill	Consolidation Code	Order No.						

NO ALLOWABLE WILL BE ASSIGNED TO THIS COMPLETION UNTIL ALL INTERESTS HAVE BEEN CONSOLIDATED  
OR A NON-STANDARD UNIT HAS BEEN APPROVED BY THE DIVISION

	<p><b>OPERATOR CERTIFICATION</b></p> <p>I hereby certify the the information contained herein is true and complete to the best of my knowledge and belief.</p> <p></p> <p>Signature Gerald T. (Tom) Pepper Printed Name Operations Engineering Ad Title May 6, 2003 Date</p> <p><b>SURVEYOR CERTIFICATION</b></p> <p>I hereby certify that the well location shown on this plat was plotted from field notes of actual surveys made by me or under my supervision, and that the same is true and correct to the best of my belief.</p> <p>APRIL 28, 2003</p> <p>Date Surveyed Signature of Surveyor Professional Surveyor </p>
--	--



## CHOKE MANIFOLD REQUIREMENT (2000 psi WP)



**devon**

**WEST RED LAKE AREA**  
Eddy County, New Mexico

SCHEMATIC  
**BLOWOUT PREVENTOR**  
(2000 PSI WORKING WP)

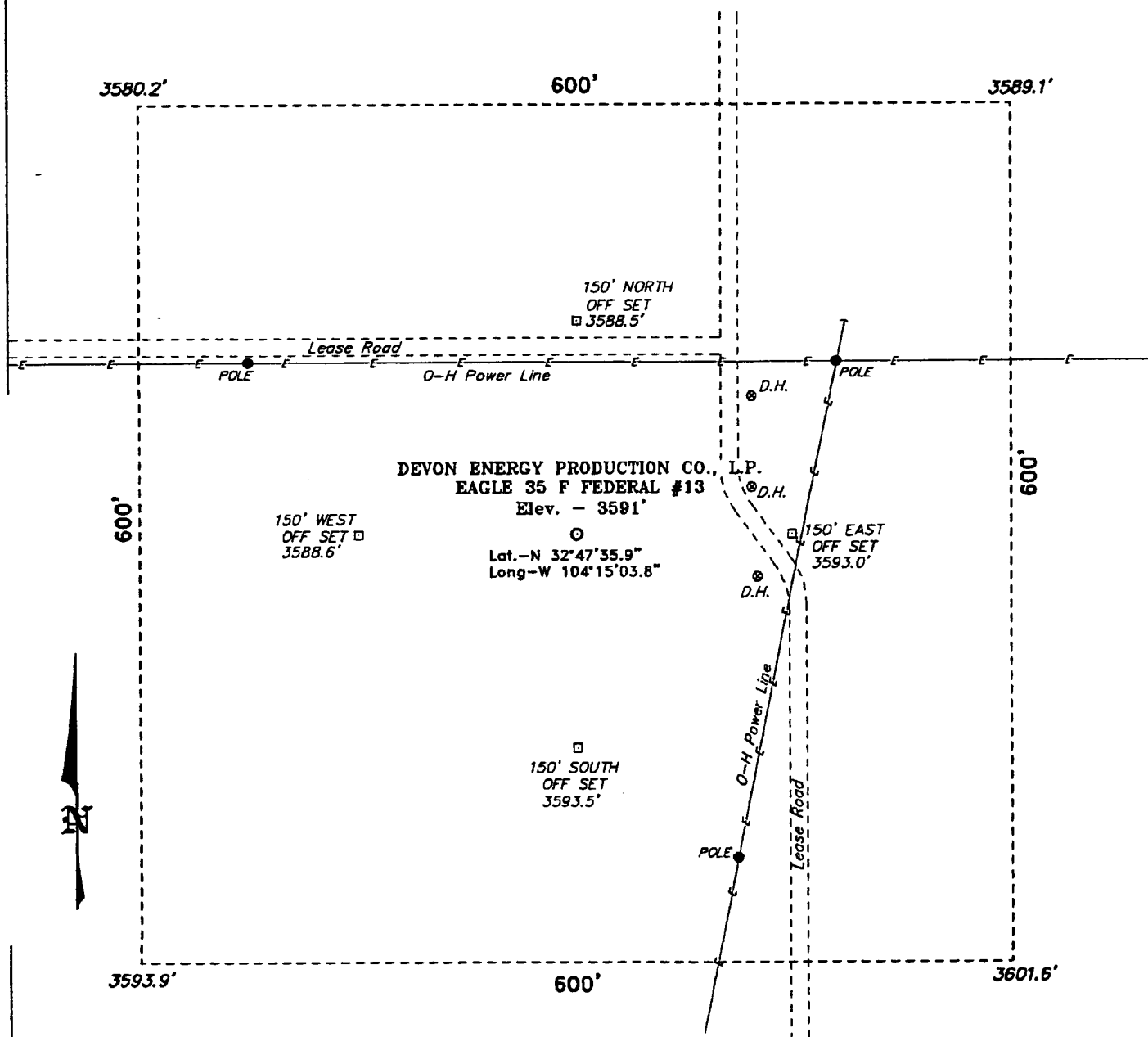
Q:\PROJECTS\EXPANDED

WRLHOP


CB

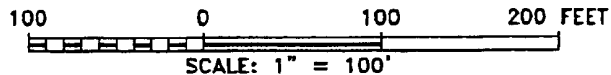
8/98

**SECTION 35, TOWNSHIP 17 SOUTH, RANGE 27 EAST, N.M.P.M.,  
EDDY COUNTY, NEW MEXICO.**



**Directions to Location:**

FROM THE JUNCTION OF CO. RD. 204 AND CO. RD. 258, GO SOUTH ON CO. RD. 204 FOR APPROX. 0.25 MILE TO CO. RD. 225; THENCE SOUTHWESTERLY ON CO. RD. 225 FOR APPROX. 1.2 MILE TO A LEASE ROAD; THENCE WEST AND NORTH ON LEASE ROAD FOR APPROX. 0.2 MILE TO A POINT ON THE PROPOSED WELL PAD.



**DEVON ENERGY PROD. CO., L.P.**

REF: EAGLE 35F FED. No. 13 / Well Pad Topo

THE EAGLE 35F FED. No. 13 LOCATED 1750' FROM  
THE NORTH LINE AND 2160' FROM THE WEST LINE OF  
SECTION 35, TOWNSHIP 17 SOUTH, RANGE 27 EAST,  
N.M.P.M., EDDY COUNTY, NEW MEXICO.

**BASIN SURVEYS** P.O. BOX 1786 - HOBBS, NEW MEXICO

W.O. Number: 3246

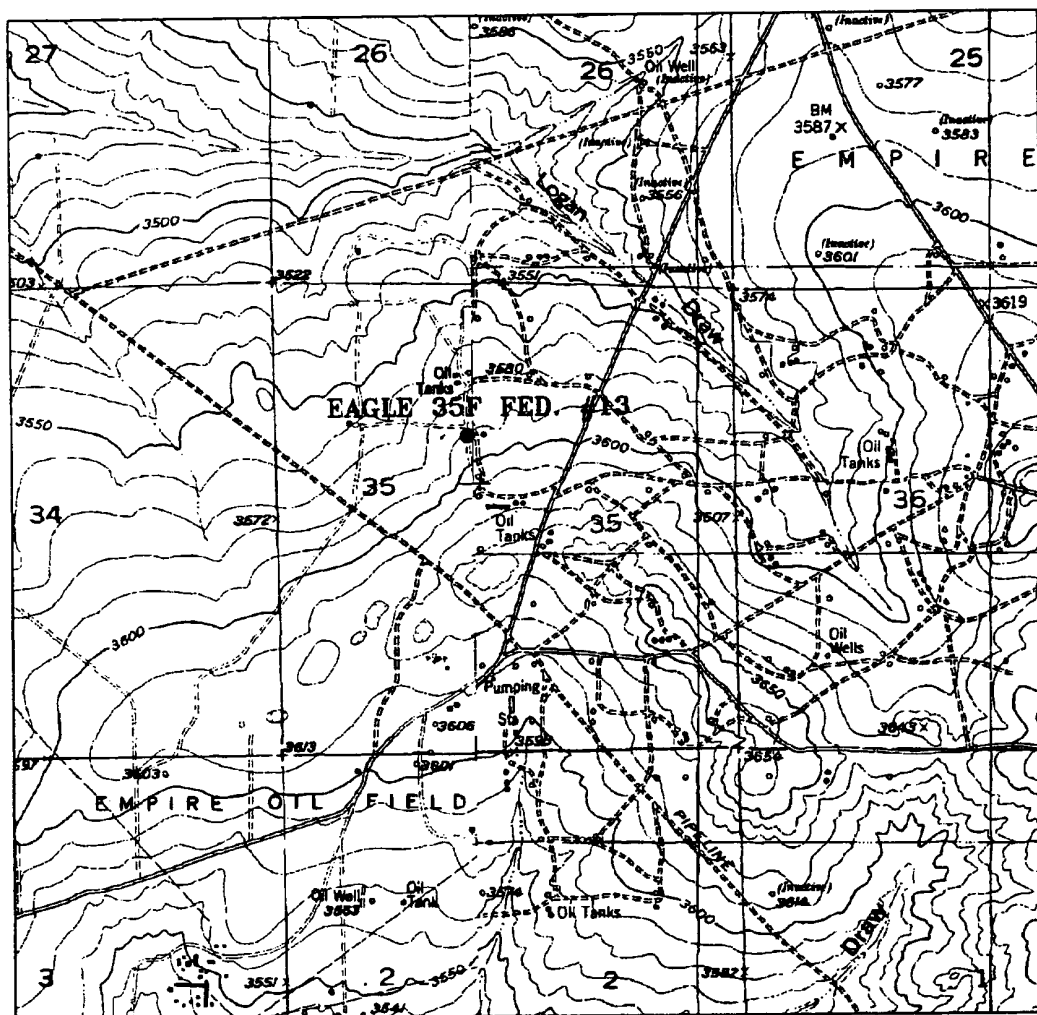
Drawn By: K. GOAD

Date: 04-30-2003

Disk: KJG CD#4 - 3246A.DWG

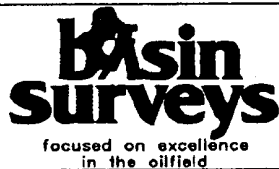
Survey Date: 04-28-2003

Sheet 1 of 1 Sheets



### EAGLE 35F FEDERAL #13

Located at 1750' FNL and 2160' FWL  
 Section 35, Township 17 South, Range 27 East,  
 N.M.P.M., Eddy County, New Mexico.



P.O. Box 1786  
 1120 N. West County Rd.  
 Hobbs, New Mexico 88241  
 (505) 393-7316 - Office  
 (505) 392-3074 - Fax  
[basinsurveys.com](http://basinsurveys.com)

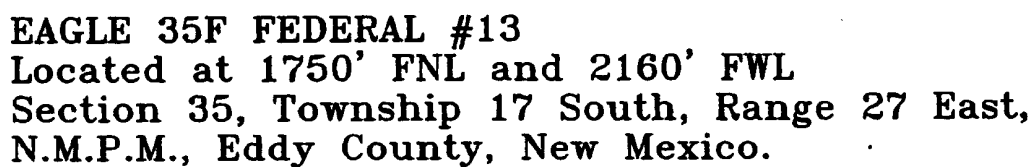
W.O. Number: 3246AA - KJG CD#4

Survey Date: 04-28-2003

Scale: 1" = 2000'

Date: 04-30-2003

DEVON ENERGY  
 PROD. CO., L.P.



UNITED STATES DEPARTMENT OF THE INTERIOR  
Bureau of Land Management  
Roswell Field Office  
2909 West Second Street  
Roswell, New Mexico 88201-1287

Statement Accepting Responsibility for Operations

Operator Name:  
Street or Box:  
City, State:  
Zip Code:

**Devon Energy Production Company, LP**  
**20 North Broadway, Ste 1500**  
**Oklahoma City, OK 73102**

The undersigned accepts all applicable terms, conditions, stipulations and restrictions concerning operations conducted on the leased land or portion thereof, as described below.

Lease No.:

NMLC 050158

Legal Description of Land:

160 Acres, SEC 35-T17S-R27E

Formation(s):

**Glorieta-Yeso**

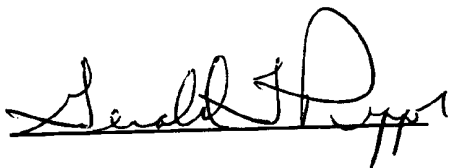
Bond Coverage:

**Nationwide**

BLM Bond File No.:

**CO1104**

Authorized Signature:



Title:

**Gerald T. (Tom) Pepper**  
**Operations Engineering Advisor**

Date:

4/22/03





United States Department of the Interior

**BUREAU OF LAND MANAGEMENT**

Roswell Field Office  
2909 West Second Street  
Roswell, New Mexico 88201

IN REPLY REFER TO:

**JUN 05 2003**

Devon Energy Production Company, L.P.  
Attn. Ms Karen Cottom  
20 North Broadway, Suite 1500  
Oklahoma City, Oklahoma 73102-8260

Re: Red Lake Field Area  
Master Drilling and Surface Use Plan  
Eddy County, New Mexico

The master drilling and surface use plan, dated May 6, 2003, for the Red Lake Field Area in Townships 17 and 18 South, Range 27 East, Eddy County, New Mexico, is now approved. Several corrections have been made to the attached list describing the field area. An approved copy is attached for your records.

Please note that the surface casing setting depth may change in individual APD (Form 3160-4) submittals because the depth of the expected fresh water varies across this area.

If you have any questions, please contact Alexis C. Swoboda, P.E. at 505-627-0228.

Sincerely,

Larry D. Bray  
Assistant Field Manager  
Lands and Minerals

devon

20 North Broadway, Suite 1500  
Oklahoma City, Oklahoma 73102-8260

Telephone: (405) 228-7512  
Fax: (405) 552-4621

May 6, 2003

Bureau of Land Management  
Attn Armando Lopez  
2909 West Second Street  
Roswell, NM 88201

Re: Master Drilling and Surface Use Program  
Red Lake Field

Dear Armando:

Per our conversation, we are submitting a Master Drilling and Surface Use Program, one original and three copies, for the Red Lake Field. I have enclosed the program and a map detailing the area for which we intend to use the program. It is my understanding that we submit the MDSUP for approval first and then submit the 3160-3 forms as they are needed.

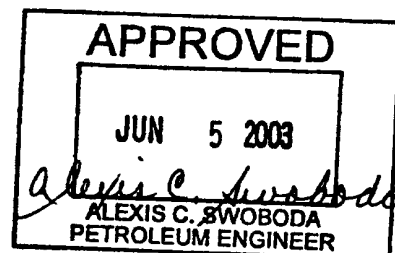
Please contact me should there be any additional information required. Thanks for your help.

Sincerely,



Karen Cottom  
Engineering Technician  
Devon Energy Production Company, L.P.

kc  
Enclosure



**Master Drilling Program**  
**Red Lake Field**

To be attached to Form 3160-3

UNIT AREA: Leases in the following sections, Townships and Ranges that are operated by Devon Energy Production Company, LP.

Lease Numbers as follows but not limited to:

<b>Section 2</b>	NMNM 2029-634 NMNM-B-1483	NE4/NW4, NW4/NE4	<b>T18S-R27E</b>
<b>Section 3</b>	NMLC 065478-B NMNM 015605 NMLC 061783-B	All of Section 3 except S2/N2 <del>W4</del>	<b>T18S-R27E</b>
<b>Section 4</b>	NMNM 033825 NMLC 055465-A NMNM 29278 NMNM 025530 NMLC 070937 NMLC 061783-A NMNM 7720	All of Section 4 except N2/NW4 and NW4/SW4	<b>T18S-R27E</b>
<b>Section 25</b>	NMNM 0558679	W2NW4	<b>T17S-27E</b>
<b>Section 26</b>	NMNM 0557370	E2 NE/4, E2SE/4, S/2 SW/4	<b>T17S-R27E</b>
	NMNM 0558679	SW4NW4, NW4SW4	
<b>Section 27</b>	NMLC 067849	N2, N2/S2	<b>T17S-R27E</b>
	NMNM 0557370	S/2S/2,	
<b>Section 28</b>	NMLC 067849	NE4/NE4	
<b>Section 33</b>	NMLC 026874-F	NW4, NW4SW4	<b>T17S-R27E</b>
	NMLC 026874-B	SE4SW4	
	NMLC 049648-B	NE4SW4	
	NMNM 025528	N2NE4, SW4NE4	
	NMNM 056122	SE4NE4	
	NMNM 033865	N2SE4	
	NMNM 025528	S2SE4	
<b>Section 34</b>	NMLC 064050-A	E2 <del>NW4</del> , NE/4 SE/4	<b>T17S-R27E</b>
	NMLC 067849	W2 NW4, SW4	
	NMNM 0557370	NE/4, NW/4SE/4,	
<b>Section 35</b>	NMLC 064050-A	NW4SW4	<b>T17S-R27E</b>
	NMLC 067849	NW/4NW/4	
	NMLC 057798	SW4SW4, N/2SE4 NE/4SW/4, SE/4, SE/4	
	NMLC 028755-A	SE/4SW/4, SW/4SE/4	
	NMNM 0557370	SW/4NW/4	
	NMLC050158	E/2NE/4, E/2NW/4	

If drilling is proposed on additional leases, the BLM will be advised when they are proposed.  
NM 29270 SESE

1. Geologic Name of Surface Formation:

Permian

2. Estimated Tops of Important Geologic Markers:

Queen	879'
Grayburg	1330'
San Andres	1610'
Glorieta-Yeso	2960'

3. Estimated Depths of Anticipated Fresh Water, Oil or Gas:Water

Possible small amounts of fresh water from surface to 1130'.

Oil

Grayburg:	1330'
San Andres:	1610'
Glorieta-Yeso	2960'

No other formations are expected to yield oil, gas or fresh water in measurable volumes. The surface fresh water sands will be protected by setting 8 5/8" casing at approximately 1150' and circulating cement back to surface. A shallower setting depth may be required to prevent the surface casing from being set through the Premier Sand. The Grayburg and San Andres intervals will be isolated by setting 5-1/2" casing to total depth (4000'±) and circulating cement to surface.

4. Casing Program:

<u>Hole Size</u>	<u>Interval</u>	<u>Csg OD</u>	<u>Weight, Grade, Type</u>
17 1/2"	0- 40'	14"	Conductor, 0.30" wall
12-1/4"	0-1150'	8-5/8"	24#, J-55 ERW or seamless ST&C R-3
7-7/8"	0-TD	5-1/2"	15.5# J-55, ERW, FBN or seamless LT&C, R-3

5. Cementing Program:

13 3/8" Conductor Casing: Cemented with redimix to surface.

8 5/8" Surface Casing: Cemented to surface with 350 sks Lite + 5% salt + 1/4 lb/sk cellophane flakes and 200 sks Class C + 2% CaCl<sub>2</sub> + 1/4 lb/sk cellophane flakes. Circulate to surface.

5-1/2" Production: Cemented to surface with 380 sks Lite + 5#/sx salt + 1/4 lb/sk cellophane flakes and 370 sks 50:50 Pos 'C' w/3% salt, Fluid loss, 1/4#/sx flake.

The above cement volumes could be revised pending the caliper measurement from the open hole logs. The top of cement is designed to reach surface.

6. Minimum Specifications for Pressure Control:

The blowout preventor equipment (BOP) shown in Exhibit #1 will consist of either a single annular preventor or a double ram type preventor (2000 psi WP). The unit will be hydraulically operated and will be equipped with either a single annular preventor or a set of double rams (blind rams and 4-1/2" drill pipe rams). The BOP will be installed on the 8 5/8" surface casing and utilized continuously until total depth is reached. Prior to drilling out the 8 5/8" casing shoe, the BOP's will be tested with the rig pump to 1000 psi.

The BOP system will be function tested and checked each 24 hour period and each time the drill pipe is out of the hole. These functional tests will be documented on the daily driller's log. A 2" kill line and 3" choke line will be incorporated in the drilling spool below the BOP. Other accessory BOP equipment will include a Kelly cock, floor safety valve, choke lines and choke manifold.

6. Types and Characteristics of the Proposed Mud System:

The well will be drilled to total depth using a fresh water mud system. Depths of systems are as follows:

<u>Depth</u>	<u>Type</u>	<u>Weight (ppg)</u>	<u>Viscosity (1/sec)</u>	<u>Water Loss (cc)</u>
0 - 1150'	Fresh Water	8.4-8.8	34-38	No Control
1150' - TD	Fresh Water/Cut Brine	8.4-8.6	28-32	No Control

The necessary mud products for weight addition and fluid loss control will be on location at all times.

7. Auxiliary Well Control and Monitoring Equipment:

- A. A Kelly cock will be in the drill string at all times.
- B. A full opening drill pipe stabbing valve having the appropriate connections will be on the rig floor at all times.

8. Logging, Testing and Coring Program:

- A. No drill stem tests are planned.
- B. The open hole electrical logging program will be:
  - T. D. to 1150': Dual Induction-Micro SFL with Gamma Ray, and Caliper
  - T. D. to 1150': Compensated Neutron-Litho Density with Gamma Ray and Caliper
  - T. D. to surface: Gamma Ray/Neutron
- C. No cores are planned.

9. Abnormal Pressures, Temperatures and Potential Hazards:

No abnormal pressures or temperatures are foreseen. The anticipated bottom hole temperature at total depth is 90 degrees and maximum bottom hole pressure is 800 psi. No major loss circulation intervals have been encountered in adjacent wells. An H<sub>2</sub>S Drilling Operations Plan is included as Exhibit #6.

10. Anticipated Starting Date and Duration of Operations:

Road and location preparation will not be undertaken until approval has been received from the BLM. The anticipated spud date will be provided with each well application. The drilling operation should require approximately 10 days. If the well is deemed productive, completion operations will require, at minimum, an additional 30 days of testing to ascertain whether the well will be connected to an existing production facility.

---

**MASTER SURFACE USE AND OPERATING PLAN**  
**Red Lake Field**

This plan will be submitted with Form 3160-3, Application for Permit to Drill. The purpose of this plan is to describe the location of the proposed wells, the proposed construction activities and operations plan, the magnitude of necessary surface disturbance involved and the procedures to be followed in rehabilitating the surface after completion of the operations. This plan will allow a complete appraisal to be made of the environmental effects associated with the proposed operations.

**UNIT AREA:** Leases in the following Sections, Townships and Ranges that are Operated by Devon Energy Production Company, LP.

Lease Numbers as follows but not limited to:

<b>Section 2</b>	NMNM 2029-634 NMNM-B-1483	NE4/NW4, NW4/NE4	<b>T18S-R27E</b>
<b>Section 3</b>	NMLC 065478-B NMNM 015605 NMLC 061783-B	All of Section 3 except S2/N24	<b>T18S-R27E</b>
<b>Section 4</b>	NMNM 033825 NMLC 055465-A NMNM 29278 NMNM 025530 NMLC 070937 NMLC 061783-A NMNM 7720	All of Section 4 except N2/NW4 and NW4/SW4	<b>T18S-R27E</b>
<b>Section 25</b>	NMNM 0558679	W2NW4	<b>T17S-27E</b>
<b>Section 26</b>	NMNM 0557370	E2 NE/4, E2SE/4, S/2 SW/4	<b>T17S-R27E</b>
	NMNM 0558679	SW4NW4, NW4SW4	
<b>Section 27</b>	NMLC 067849	N2, N2/S2	<b>T17S-R27E</b>
	NMNM 0557370	S/2S/2,	
<b>Section 28</b>	NMLC 067849	NE4/NE4	
<b>Section 33</b>	NMLC 026874-F	NW4, NW4SW4	<b>T17S-R27E</b>
	NMLC 026874-B	SE4SW4	
	NMLC 049648-B	NE4SW4	
	NMNM 025528	N2NE4, SW4NE4	
	NMNM 056122	SE4NE4	
	NMNM 033865	N2SE4	
	NMNM 025528	S2SE4	
<b>Section 34</b>	NMLC 064050-A	E2, NW4, NE/4 SE/4	<b>T17S-R27E</b>
	NMLC 067849	W2 NW4, SW4	
	NMNM 0557370	NE/4, NW/4SE/4,	
<b>Section 35</b>	NMLC 064050-A	NW4SW4	<b>T17S-R27E</b>
	NMLC 067849	NW/4NW/4	
	NMLC 057798	SW4SW4, N/2SE4 NE/4SW/4, SE/4, SE/4	
	NMLC 028755-A	SE/4SW/4, SW/4SE/4	
	NMNM 0557370	SW/4NW/4	
	NMLC050158	E/2NE/4, E/2NW/4	

If drilling is proposed on additional leases, the BLM will be advised when they are proposed.

1. Existing Roads:

- A. The well site and elevation plat for each well will be provided with the 3160-3 when proposed.
- B. All roads to the location are shown on Exhibit #2 of each individual application. The existing roads are illustrated in red and are adequate for travel during drilling and production operations. Upgrading of the roads prior to drilling will be done where necessary as determined during the onsite inspections.
- C. Directions to location will be provided for each individual well application.
- D. Routine grading and maintenance of existing roads will be conducted as necessary to maintain their condition as long as any operations continue on the lease.

2. Proposed Access Road

Exhibit #3 of each application will show the new access road (if necessary) to be constructed and will be illustrated in yellow. The road will be constructed as follows:

- A. The maximum width of the road will be fifteen (15) feet.
- B. It will be crowned and made of 6 inches of rolled and compacted caliche. Water will be deflected, as necessary, to avoid accumulation and prevent surface erosion.
- C. Surface material will be native caliche. This material will be obtained from a BLM approved pit nearest in proximity to the location.
- D. The average grade will be approximately 1%.
- E. No cattle guards; grates or fence cuts will be required
- F. No turnouts are planned.

4. Location of Existing and/or Proposed Facilities:

- A. In the event the well is found productive, the collection facilities will be noted on the Application to Permit. We believe that existing facilities will be sufficient unless otherwise stated in the individual APD form. Existing facilities are listed below:

Malco Batt NE / SW OF SEC 6  
 CARTER COLLIER NE / SW OF SEC 5  
 WRL BATT AND INJ. ST. 1 NE / NW OF SEC 7  
 JOHNSTON BATT SW / NW SEC 7  
 JACKSON BATT SW / SW SEC 7  
 KAISER B 6 BATT NW / SE OF SEC 18  
 KAISER BATT NE / SE OF SEC 18  
 HAWK 8 BATT IN SW / SE OF SEC 8  
 WRL SATALITE BATT. NE / NE OF SEC 8  
 WRL INJ ST 2 NW / NE OF SEC 9  
 HAWK 9 BATT NW / SE OF SEC 9  
 HONDO BATT NE / SW OF SEC 4  
 WINDFOHR BATT SE / NE OF SEC 4  
 FALCON BATT NE / SW OF SEC 3  
 COMPTON 33 BATT SW / NE OF SEC 33  
 EAGLE BATT SW / NE OF SEC 34  
 LOGAN ST 2 BATT NW / NE OF SEC 2  
 LOGAN 35 BATT SE / SW OF SEC 35



EALGLE 27 BATT NW / SE OF SEC 27  
ASAU SE / SE OF SEC 13

- B. If the well is productive, rehabilitation plans are as follows:
- a. The reserve pit will be back-filled after the contents of the pit are dry (within 120 days after completion, weather permitting).
  - b. The drill site will then be contoured to the original natural state.

5. Methods of Handling Water Disposal:

- A. Drill cuttings will be disposed into the reserve pit.
- B. Drilling fluids will be contained in steel mud tanks or lined earthen pits and the reserve pit. The reserve pit will contain excess drilling fluid or fluid from the well during drilling, cementing, and completion operations. The reserve pit will be an earthen pit roughly 70' x 70' x 5', or smaller, in size.
- C. The reserve pit will be fenced on three sides throughout drilling operations and will be totally isolated upon removal of the rotary rig. The pit will be lined using a 5-7 mil plastic to minimize loss of drilling fluids.
- D. Water produced from the well during completion operations will be disposed into a steel tank or reserve pit, if volumes prove excessive. After placing the well on production through the production facilities, all water will be collected in tanks and injected into the water injection system. Produced oil will be separated into steel stock tanks until sold.
- E. A portable chemical toilet will be available on the location for human waste during the drilling operations.
- F. Garbage, trash and waste paper produced during drilling operations will be collected in a contained trailer and disposed at a approved landfill. All waste material will be contained to prevent scattering by the wind. All water, fluids, salt or other chemicals will be disposed into the reserve pit. No toxic waste or hazardous chemicals will be generated by this operation.
- G. All waste material will be removed within 30 days after the well is either completed or abandoned. The reserve pit will be completely fenced until it has dried. At the point the reserve pit is found sufficiently dry, it will be backfilled and reclaimed. The portion of the drilling pad used by the production equipment (pumping unit) will remain in use.

6. Well Site Layout:

- A. The drill pad layout will be shown on Exhibit 4 for each individual well.  
Dimensions

- B. No permanent living facilities are planned, but temporary trailers for the tool pusher, drilling foreman and mud logger may be on location throughout drilling operations.
- C. The reserve pit and earthen pits will be lined using plastic sheeting of 5-7 mil thickness.

7. Surface Ownership:

The well site is owned by the Bureau of Land Management.

8. Other Information:

- A. The project area is classified as vegetations consisting of thick grasses, isolated creosote, and shallow silty sandy soil over gypsum.
- B. There is permanent water (Pecos River) to the west of the area covered by the Master Drilling and Surface use plan.
- C. A Cultural Resources Examination for each APD will be completed by Southern New Mexico Archeological Services, Inc. and forwarded to the Carlsbad, New Mexico BLM office.

9. Lessee's and Operator's Representative:

The Devon Energy Corporation representatives responsible for assuring compliance of the surface use plan are:

Gerald T. (Tom) Pepper  
Operations Engineering Advisor

Don Mayberry  
Superintendent

Devon Energy Production, L.P.  
20 North Broadway Suite 1500  
Oklahoma City, OK 73102

Devon Energy Production Company, L.P.  
P.O. Box 250  
Artesia, NM 88211-0250

(405) 552-4513 (office)  
(405) 728-8641 (home)

(505) 748-3371 (office)  
(505) 746-4945 (home)

Certification:

I hereby certify that I am familiar with the conditions that presently exist; that the statements made in this plan are, to the best of my knowledge, true and correct; and that the work associated with the operations proposed herein will be performed by Devon Energy Corporation (Nevada) and its contractors and subcontractors in conformity with this plan and the terms and conditions under which it is approved.

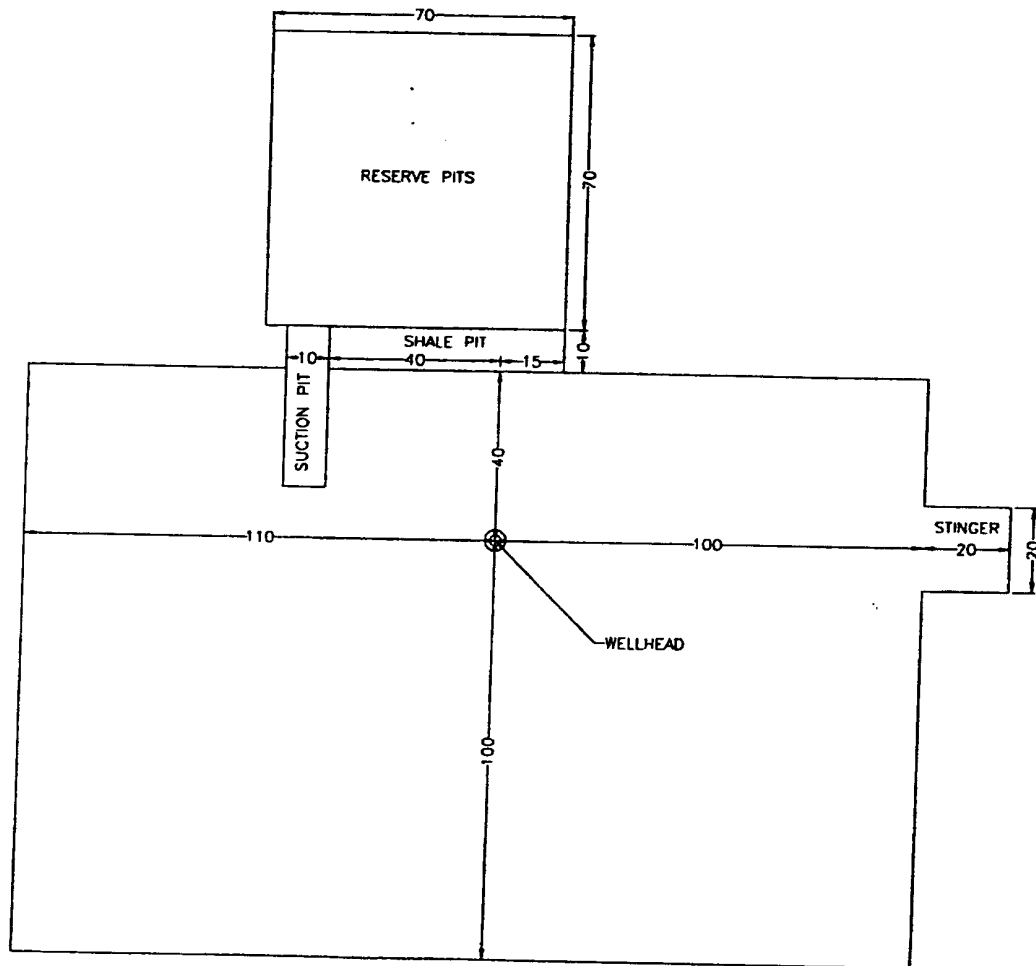
Date: 5/16/03

Signed: 

Gerald T. (Tom) Pepper  
Operations Engineering Advisor

**Attachment to Exhibit #1**  
**NOTES REGARDING BLOWOUT PREVENTORS**  
**West Red Lake Area**  
**Eddy County, New Mexico**

1. Drilling nipple will be constructed so it can be removed mechanically without the aid of a welder. The minimum internal diameter will equal BOP bore.
  2. Wear ring will be properly installed in head.
  3. Blowout preventor and all associated fittings will be in operable condition and tested to 1000 psi with the rig pump.
  4. All fittings will be flanged.
  5. A full bore safety valve with proper thread connections will be available on the rotary rig floor at all times.
  6. All choke lines will be anchored to prevent movement.
  7. All BOP equipment will be equal to or larger in bore than the internal diameter of the last casing string.
  8. Will maintain a Kelly cock attached to the Kelly.
  9. Hand wheels and wrenches will be properly installed and tested for safe operation.
  10. All BOP equipment will meet API standards and include a minimum 40 gallon accumulator having two independent means of power to initiate closing operation.
  11. **BOP will consist of either a single annular preventor or a set of double rams as shown in Exhibit #1.**
-



FILE:

**WEST RED LAKE AREA**  
 EDDY COUNTY, NEW MEXICO

DRILLING PAD  
**EXHIBIT 5**

Scale in Feet  
 25 0 25 50 75 100  
 EB

6/96

# DEVON ENERGY CORPORATION

## HYDROGEN SULFIDE DRILLING OPERATIONS PLAN

### A. Hydrogen Sulfide Training

All rig crews and company personnel will receive training from a qualified instructor in the following areas prior to penetrating any hydrogen sulfide bearing formations during drilling operations:

1. The hazards and characteristics of hydrogen sulfide (H<sub>2</sub>S).
2. The proper use and maintenance of the H<sub>2</sub>S safety equipment and of personal protective equipment to be utilized at the location such as H<sub>2</sub>S detection monitors, alarms and warning systems, and breathing equipment. Briefing areas and evacuation procedures will also be discussed and established.
3. Proper rescue techniques and procedures will be discussed and established.

In addition to the above, supervisory personnel will be trained in the prevention of oil and gas well blowouts in accordance with Minerals Management Service Standards Subpart - 0 - 250 - 212.

Prior to penetrating any known H<sub>2</sub>S bearing formation, H<sub>2</sub>S training will be required at the rig sight for all rig crews and company personnel that have not previously received such training. This instruction will be provided by a qualified instructor with each individual being required to pass a 20 question test regarding H<sub>2</sub>S safety procedures. All contract personnel employed on an unscheduled basis will be required to have received appropriate H<sub>2</sub>S training.

This Hydrogen Sulfide Drilling And Operations Plan shall be available at the wellsite during drilling operations.

### B. H<sub>2</sub>S Safety Equipment And Systems

All H<sub>2</sub>S safety equipment and systems will be installed, tested, and operational when drilling operations reach a depth approximately 500' above any known or probable H<sub>2</sub>S bearing formation. The safety systems to be utilized during drilling operations are as follows:

### **1. Well Control Equipment**

- (a) Double ram BOP with a properly sized closing unit and pipe rams to accommodate all pipe sizes in use.
- (b) A choke manifold with a minimum of one remote choke.

### **2. H2S Detection And Monitoring Equipment**

- (a) Three (3) H2S detection monitors will be placed in service at the location. One monitor will be placed near the bell nipple on the rig floor; one will be placed at the rig substructure; and, one will be at the working mud pits or shale shaker. This monitoring system will have warning lights and audible alarms that will alert personnel when H2S levels reach 10 ppm.
- (b) One (1) Sensidyne Pump with the appropriate detection tubes will also be available to perform spot checks for H2S concentrations in any remote or isolated areas.

### **3. Protective Equipment For Essential Personnel**

Protective equipment will consist of the following:

- (a) Four (4) - five minute escape packs located at strategic points around the rig.
- (b) Two (2) - thirty minute rescue packs to be located at the designated briefing areas.

### **4. Visual Warning System**

Visual warning system will consist of the following:

- (a) Two wind direction indicators.
- (b) One condition / warning sign which will be posted on the road - providing direct access to the location. The sign will contain lettering of sufficient size to be readable at a reasonable distance from the immediate location. The sign will inform the public that a hydrogen sulfide gas environment could be encountered at the location.

**5. Mud Program**

(a) The mud program has been designed to minimize the volume of H<sub>2</sub>S circulated to surface. Proper mud weight and safe drilling practices (for example, keeping the hole filled during trips) will minimize hazards when drilling in H<sub>2</sub>S bearing formations.

**6. Metallurgy**

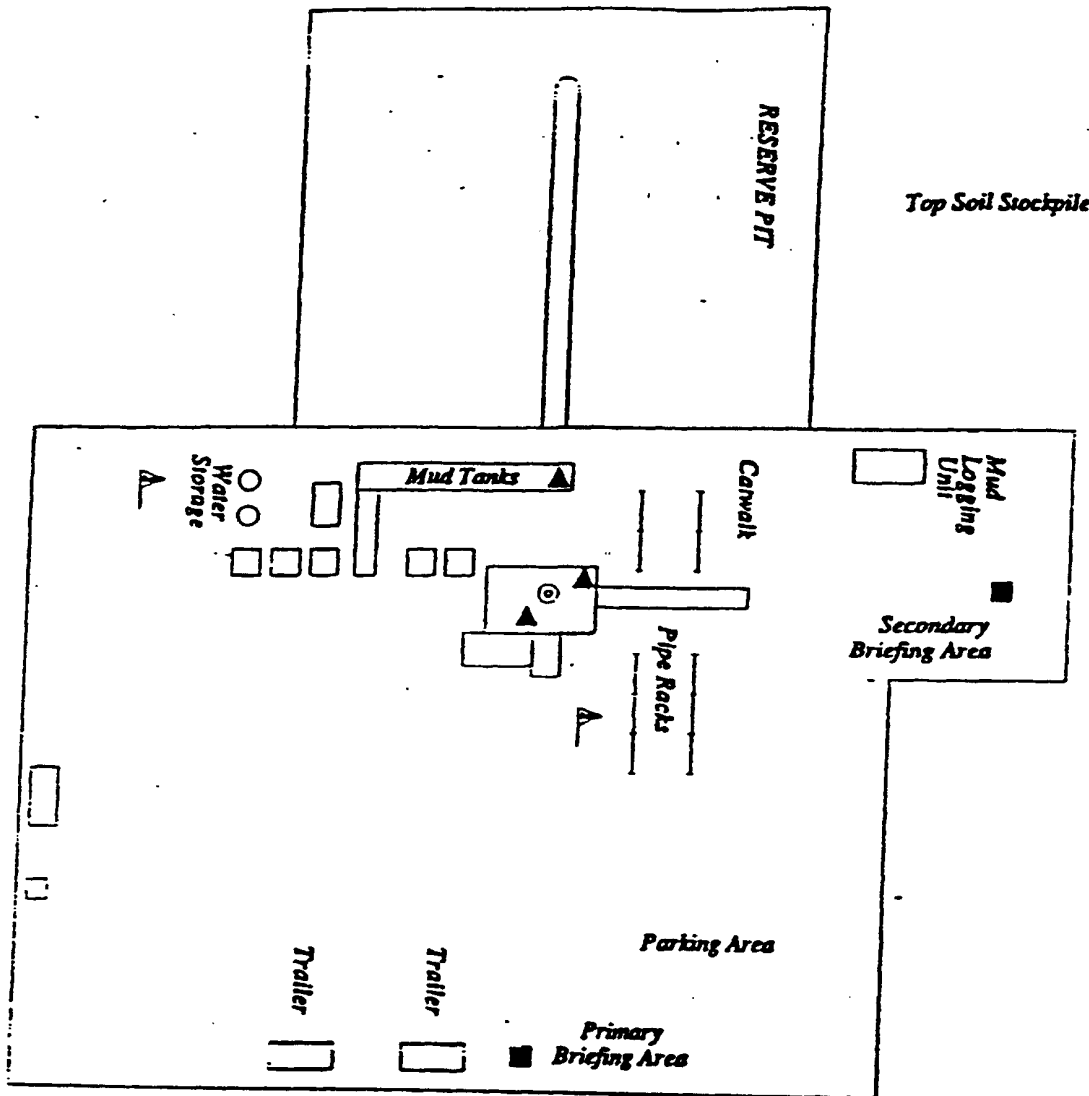
(a) All drill strings, casings, tubing, wellhead, blowout preventers, drilling spools, kill lines, choke manifold and lines, and valves shall be suitable for H<sub>2</sub>S service.

**7. Communication**

(a) Two way radio and cellular telephone communication will be available in company vehicles.

**C. Diagram of Drilling Location**

1. Attached is a diagram representing a typical location layout as well as the location of H<sub>2</sub>S monitors, briefing areas, and wind direction indicators.



- ▲ H2S MONITORS WITH ALARMS AT THE BELL NIPPLE, SUBSTRUCTURE, AND SHALE SHAKER
- ┆ WIND DIRECTION INDICATORS
- SAFE BRIEFING AREAS WITH CAUTION SIGNS AND PROTECTIVE BREATHING EQUIPMENT



**devon**

**WEST RED LAKE AREA**  
WEST COUNTY, NEW MEXICO

**H2S PLAN**

Scale in Feet  
25 0 25 50 75 100

File 011000/H2S-PLAN 3/95



# RED LAKE AREA APD
