

District I  
1625 N. French Dr., Hobbs, NM 88240  
District II  
1301 W. Grand Avenue, Artesia, NM 88  
District III  
1000 Rio Brazos Road, Aztec, NM 8741  
District IV  
1220 S. St. Francis Dr., Santa Fe, NM 87505

CEMENT TO COVER ALL OIL,  
GAS AND WATER BEARING  
ZONES

Oil Resources  
vision  
is Dr.  
305

RECEIVED

FEB 07 2006

Submit to appropriate District Office

AMENDED REPORT

Form C-101  
May 27, 2004

APPLICATION FOR PERMIT TO DRILL, RE-ENTER, DEEPEN, PLUGBACK, OR ADD A ZONE

Operator Name and Address Mewbourne Oil Company Po Box 5270 Hobbs, NM 88240		OGRID Number 14744
Property Code 35434	Property Name Long Draw 10 Fee Com	API Number 30-015-34606
Proposed Pool 1 Cemetery Morrow		Well No. 1
Proposed Pool 2		

Surface Location

UL or lot no.	Section	Township	Range	Lot Idn	Feet from the	North/South line	Feet from the	East/West line	County
L	10	20S	25E		1980'	S	660'	W	Eddy

Proposed Bottom Hole Location If Different From Surface

UL or lot no.	Section	Township	Range	Lot Idn	Feet from the	North/South line	Feet from the	East/West line	County

Additional Well Information

Work Type Code N	Well Type Code G	Cable/Rotary R	Lease Type Code P	Ground Level Elevation 3440'
Multiple No	Proposed Depth 9800'	Formation Morrow	Contractor TBA	Spud Date ASAP
Depth to Groundwater 50 or more but less than 100' (10 pts)		Distance from nearest fresh water well Less than 1000 from all other wtr sources (1000' or more --0 pts)		Distance from nearest surface water (1000' or more --0 pts)
Pit: Liner: Synthetic <input checked="" type="checkbox"/> 12 mils thick Clay <input type="checkbox"/> Pit Volume: 24000 bbls Drilling Method: Production				
Closed-Loop System <input type="checkbox"/> Fresh Water <input checked="" type="checkbox"/> Brine <input checked="" type="checkbox"/> Diesel/Oil-based <input type="checkbox"/> Gas/Air <input type="checkbox"/>				

Proposed Casing and Cement Program

Hole Size	Casing Size	Casing weight/foot	Setting Depth	Sacks of Cement	Estimated TOC
12 1/4"	8 5/8"	32#	1200' / 1200' - 1400'	900	Surface
7 7/8"	5 1/2" or 4 1/2"	11.6# or 17#	9800'	1200	500' above WC

22 Describe the proposed program. If this application is to DEEPEN or PLUG BACK, give the data on the present productive zone and proposed new productive zone. Describe the blowout prevention program, if any. Use additional sheets if necessary.

BOP Program: Schaffer LWS or equivalent (Double-Ram Hydraulic) 11" 5000 series with Hydriil 900 Series (See Exhibit #2A) from intermediate casing to total depth. Rotating head, PVT, flow monitors and mud gas Separator from the Wolfcamp to TD.

Mud Program: 0' to 1600' Fresh Water, spud mud, lime for PH and LCM as needed for seepage.  
1600' to TD Fresh Water and Cut brine. 8.4 to 9.3 #/g, Caustic for PH, Starch for WL control and LCM as needed for seepage

23 I hereby certify that the information given above is true and complete to the best of my knowledge and belief. I further certify that the drilling pit will be constructed according to NMOCD guidelines ☒ a general permit ☐ or an (attached) alternative OCD-approved plan ☐.

Printed name: Kristi Green

Title: Hobbs Production

E-mail Address: kgreen@mewbourne.com

Date: 02/07/06

Phone: 505-393-5905

OIL CONSERVATION DIVISION

Approved by:

Title:

Approval Date: FEB 09 2006

Expiration Date: FEB 09 2007

Conditions of Approval Attached

NOTIFY OCD OF SPUD & TIME  
TO WITNESS CEMENTING OF  
SURFACE CASING

DISTRICT I  
1626 N. French Dr., Hobbs, NM 88240  
DISTRICT II  
811 South First, Artesia, NM 88210

DISTRICT III  
1030 Rio Brazos Rd., Artesia, NM 87410

DISTRICT IV  
2040 South Pacheco, Santa Fe, NM 87505

State of New Mexico  
Energy, Minerals and Natural Resources Department

Form C-102  
Revised March 17, 1999  
Instruction on back  
Submit to Appropriate District Office  
State Lease - 4 Copies  
Fee Lease - 3 Copies

OIL CONSERVATION DIVISION  
P.O. Box 2088  
Santa Fe, New Mexico 87504-2088

☐ AMENDED REPORT

WELL LOCATION AND ACREAGE DEDICATION PLAT

API Number	Pool Code 74640	Pool Name Cemetery Morrow
Property Code	Property Name LONG DRAW "10" FEE COM.	Well Number 1
OGRID No. 14744	Operator Name MEWBOURNE OIL COMPANY	Elevation 3440

Surface Location

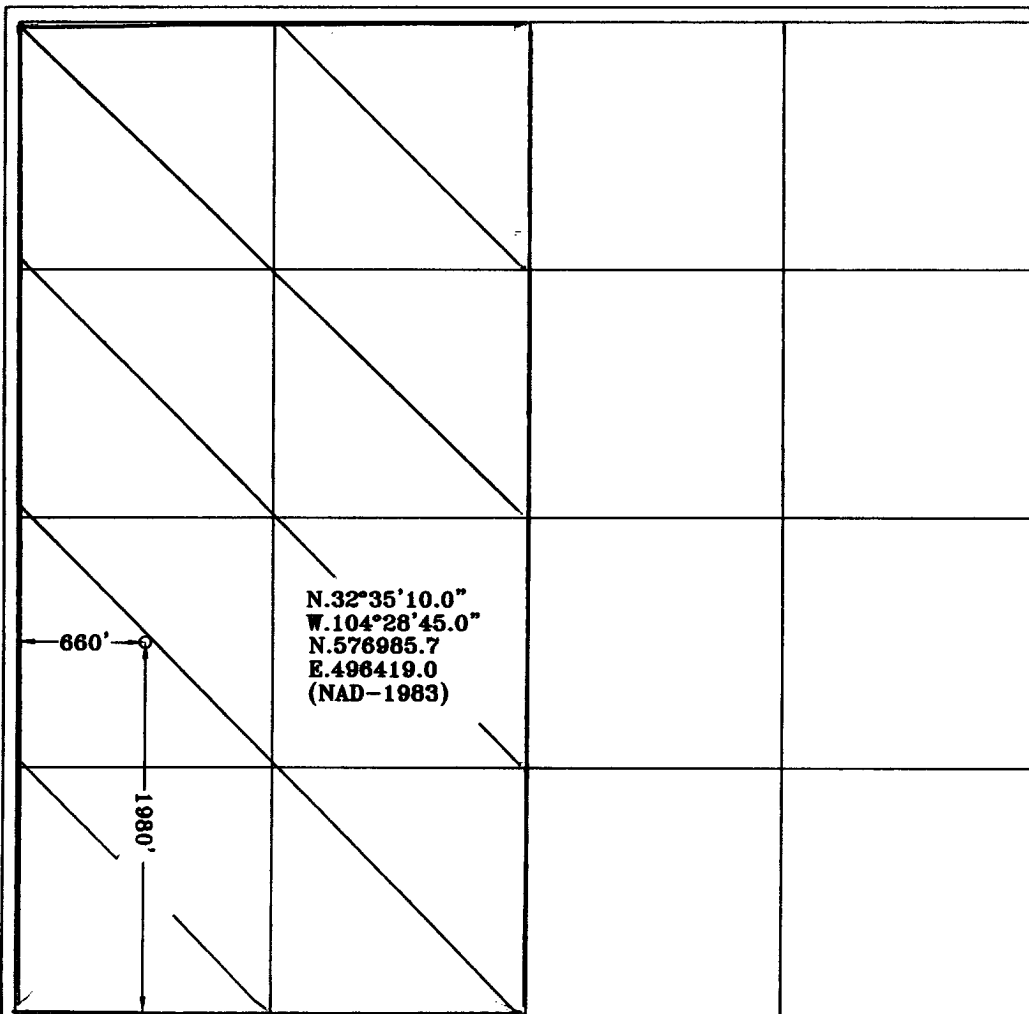
UL or lot No.	Section	Township	Range	Lot Idn	Feet from the	North/South line	Feet from the	East/West line	County
L	10	20S	25E		1980	SOUTH	660	WEST	EDDY

Bottom Hole Location If Different From Surface

UL or lot No.	Section	Township	Range	Lot Idn	Feet from the	North/South line	Feet from the	East/West line	County

Dedicated Acres 320	Joint or Infill	Consolidation Code	Order No.
------------------------	-----------------	--------------------	-----------

NO ALLOWABLE WILL BE ASSIGNED TO THIS COMPLETION UNTIL ALL INTERESTS HAVE BEEN CONSOLIDATED  
OR A NON-STANDARD UNIT HAS BEEN APPROVED BY THE DIVISION



OPERATOR CERTIFICATION

I hereby certify the the information  
contained herein is true and complete to the  
best of my knowledge and belief.

*Kristi Green*

Signature

Kristi Green

Printed Name

Hobbs Regulatory

Title

02/01/06

Date

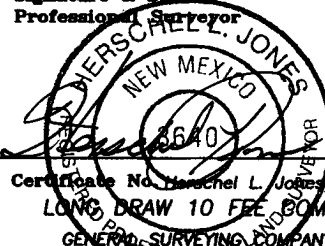
SURVEYOR CERTIFICATION

I hereby certify that the well location shown  
on this plat was plotted from field notes of  
actual surveys made by me or under my  
supervision, and that the same is true and  
correct to the best of my belief.

1/26/2006

Date Surveyed

Signature & Seal of  
Professional Surveyor



**MULTI-POINT SURFACE USE AND OPERATIONS PLAN**  
**MEWBOURNE OIL COMPANY**

Long Draw 10 Fee Com #1  
1980' FSL & 660' FWL  
Section 10-T20S-R25E  
Eddy County, New Mexico

This plan is submitted with Form C101, Application for Permit to Drill, covering the above described well. The purpose of this plan is to describe the location of the proposed well, the proposed construction activities and operations plan, the magnitude of the surface disturbance involved, and the procedures to be followed in restoring the surface so that a complete appraisal can be made of the environmental impact associated with the proposed operations.

**1. Existing Roads:**

- A. Exhibit #3 and #3A are topographic maps showing the location of the proposed well and access road (***#3 access road is Fee and #3A access road is BLM***). Existing roads are highlighted in blue and proposed roads are highlighted in red.
- B. **Directions to location from Carlsbad, NM: Go north on US285 approx 10 miles (just north of Brantley Lake). Turn west on CR23 (Rock Daisy Rd) and go west 4.6 miles. Turn south and go 1.5 miles on existing lease road. Turn east and go ½ mile into MOC Long draw 9 Federal Com #1 location. Continue thru location to SE corner and go 0.4 miles east. Turn south and go south 0.3 miles to new location.**

**2. Proposed Access Road:**

- A Will need approx 1583' of new road. The road will come from the north.

**3. Location of Existing and/or Proposed Facilities:**

- A. There are no production facilities on this lease at the present time.
- B. In the event that the well is productive, production facilities will be located on the well pad.

**4. Location and Type of Water Supply**

The well will be drilled with a combination of fresh water and brine water based mud systems. The water will be obtained from commercial suppliers in the area and/or hauled to the location by transport trucks over existing and proposed roads as indicated in Exhibit #3.

**5. Source of Construction Materials**

All material required for construction of the drill pad and access roads will be obtained from private, state, or federal pits. The construction contractor will be solely responsible for securing construction materials required for this operation and paying any royalties that may be required on those materials.

## **MULTI-POINT SURFACE USE AND OPERATIONS PLAN**

### **MEWBOURNE OIL COMPANY**

Long Draw 10 Fee Com #1

Page 2

#### **6. Methods of Handling Waste Disposal:**

- A. Drill cuttings not retained for evaluation purposed will be disposed of in the reserve pit.
- B. Drilling fluids will be allowed to evaporate in the reserve pit prior to closure. Water produced during operations will be disposed of in the reserve pit.
- C. If any liquid hydrocarbons are produced during operations, those liquids will be stored in suitable tanks until sold.
- E. Current regulations regarding the proper disposal of human waste will be followed.
- F. All trash, junk, and other waste materials will be stored in proper containers to prevent dispersal and will be removed to an appropriate facility within one week of cessation of drilling and completion activities.

#### **7. Ancillary Facilities**

There are no ancillary facilities within the immediate vicinity of the proposed well site.

#### **8. Well Site Layout**

- A. A diagram of the drill pad is shown in Exhibit #4. Dimensions of the pad, pits, and location of major rig components are shown.
- B. The reserve pit will be lined with a high quality plastic sheeting to prevent migration of fluids as per OCD regulations.
- C. The pad dimension of 400' X 250' have been staked and flagged.

#### **9. Plans for Restoration of Surface**

- A. Upon cessation of the proposed operations, if the well is abandoned, the location and road will be ripped and re-seeded. The reserve pit area, after allowing to dry will be leveled. The entire location will be restored to the original contour as much as reasonable possible. All trash, garbage, and pit lining will be hauled to appropriate disposal to assure the location is aesthetically pleasing as reasonable possible. All restoration work will be completed within 180 days of cessation of activities.
- B. The disturbed area will be restored by re-seeding during the proper growing season.
- C. Three sides of the reserve pit will be fenced prior to and during drilling operations. The reserve pit will be fenced on the fourth side after the drilling rig is removed to prevent the endangerment of livestock. The fence will remain in place until the pit area has been leveled and restored.
- D. Upon cessation of the proposed operations, if the well is not abandoned, the reserve pit area will be restored as per OCD guidelines. Any additional caliche required for production facilities will be obtained from a source as described in Section 6.

**MULTI-POINT SURFACE USE AND OPERATIONS PLAN**

**MEWBOURNE OIL COMPANY**

Long Draw 10 Fee Com #1

Page 3

**10. Surface Ownership:**

The surface is owned by: Chrystine A Willard  
307 W Grand  
Artesia, NM 88210  
Call Steve Willard (son) 505-746-9211

**11. Other Information**

A. The primary use of the surface at the location is for grazing of livestock.

**12. Operator's Representative:**

A. Through APD approval, drilling operations, completion and production operations:

**NM Young, District Manager**  
Mewbourne Oil Company  
PO Box 5270  
Hobbs, NM 88241  
505-393-5905

**13. Certification**

I hereby certify that I, or persons under my direct supervision, have inspected the proposed drill site and access route; that I am familiar with the conditions which currently exist; that the statements made in this plan are to the best of my knowledge, true and correct; and the work associated with the operations proposed herein will be performed by Mewbourne Oil Company, its contractors and subcontractors, in accordance with this plan and the terms and conditions under which it is approved. This statement is subject to the provisions of 18 U.S.C. 1001 for the filing of a false statement.

Date: 02/06/06

Signature: 

**NM Young, District Manager**  
Mewbourne Oil Company  
PO Box 5270  
Hobbs, NM 88241  
(505) 393-5905

## Hydrogen Sulfide Drilling Operations Plan

**Mewbourne Oil Company**  
Long Draw 10 Fee Com #1  
1980' FSL & 660' FWL  
Section 10-T20S-R25E  
Eddy County, New Mexico

### **1. General Requirements**

Rule 118 does not apply to this well because MOC has researched this area and no high concentrations of H<sub>2</sub>S were found. MOC will have on location and working all H<sub>2</sub>S safety equipment before the Yates formation for purposes of safety and insurance requirements.

### **2. Hydrogen Sulfide Training**

All personnel, whether regularly assigned, contracted, or employed on an unscheduled basis, will have received training from a qualified instructor in the following areas prior to entering the drilling pad area of the well:

1. The hazards and characteristics of hydrogen sulfide gas.
2. The proper use of personal protective equipment and life support systems.
3. The proper use of hydrogen sulfide detectors, alarms, warning systems, briefing areas, evacuation procedures.
4. The proper techniques for first aid and rescue operations.

Additionally, supervisory personnel will be trained in the following areas:

- 1 The effects of hydrogen sulfide on metal components. If high tensile tubular systems are utilized, supervisory personnel will be trained in their special maintenance requirements.
- 2 Corrective action and shut in procedures, blowout prevention, and well control procedures while drilling a well.
- 3 The contents of the Hydrogen Sulfide Drilling Operations Plan.

There will be an initial training session prior to encountering a known hydrogen sulfide source. The initial training session shall include a review of the site specific Hydrogen Sulfide Drilling Operations Plan.

### **3. Hydrogen Sulfide Safety Equipment and Systems**

All hydrogen sulfide safety equipment and systems will be installed, tested, and operational prior to drilling below the intermediate casing.

1. Well Control Equipment
  - A. Flare line with automatic igniter or continuous ignition source.
  - B. Choke manifold with minimum of one adjustable choke.
  - C. Blowout preventers equipped with blind rams and pipe rams to accommodate all pipe sizes with properly sized closing unit
  - D. Auxiliary equipment including rotating head and annular type blowout preventer.
2. Protective Equipment for Essential Personnel

Thirty minute self contained work unit located at briefing area as indicated on wellsite diagram.

3. Hydrogen Sulfide Protection and Monitoring Equipment

Two portable hydrogen sulfide monitors positioned on location for optimum coverage and detection. The units shall have audible sirens to notify personnel when hydrogen sulfide levels exceed 20 ppm.

4. Visual Warning Systems

A. Wind direction indicators as indicated on the wellsite diagram.

B. Caution signs shall be posted on roads providing access to location. Signs shall be painted a high visibility color with lettering of sufficient size to be readable at reasonable distances from potentially contaminated areas.

**4. Mud Program**

The mud program has been designed to minimize the amount of hydrogen sulfide entrained in the mud system. Proper mud weight, safe drilling practices, and the use of hydrogen sulfide scavengers will minimize hazards while drilling the well.

**5. Metallurgy**

All tubular systems, wellheads, blowout preventers, drilling spools, kill lines, choke manifolds, and valves shall be suitable for service in a hydrogen sulfide environment when chemically treated.

**6. Communications**

State & County Officials phone numbers are posted on rig floor and supervisors trailer. Communications in company vehicles and toolpushers are either two way radios or cellular phones.

**7. Well Testing**

Drill stem testing is not an anticipated requirement for evaluation of this well. A drill stem test is required, it will be conducted with a minimum number of personnel in the immediate vicinity. The test will be conducted during daylight hours only.

## **Notes Regarding Blowout Preventer**

### **Mewbourne Oil Company**

Long Draw 10 Fee Com #1

1980' FSL & 660' FWL

Section 10-T20S-R25E

Eddy County, New Mexico

1. Drilling nipple (bell nipple) to be constructed so that it can be removed without the use of a welder through the opening of the rotary table, with minimum internal diameter equal to blowout preventer bore.
2. Blowout preventer and all fittings must be in good condition with a minimum 5000 psi working pressure.
3. Safety valve must be available on the rig floor at all times with proper connections to install in the drill string. Valve must be full bore with minimum 5000 psi working pressure.
4. Equipment through which bit must pass shall be at least as large as internal diameter of the casing.
5. A kelly cock shall be installed on the kelly at all times.
6. Blowout preventer closing equipment to include and accumulator of at least 40 gallon capacity, two independent sources of pressure on closing unit, and meet all other API specifications.



Mewbourne Oil Company  
BOP Schematic for  
8 3/4" or 7 7/8" Hole

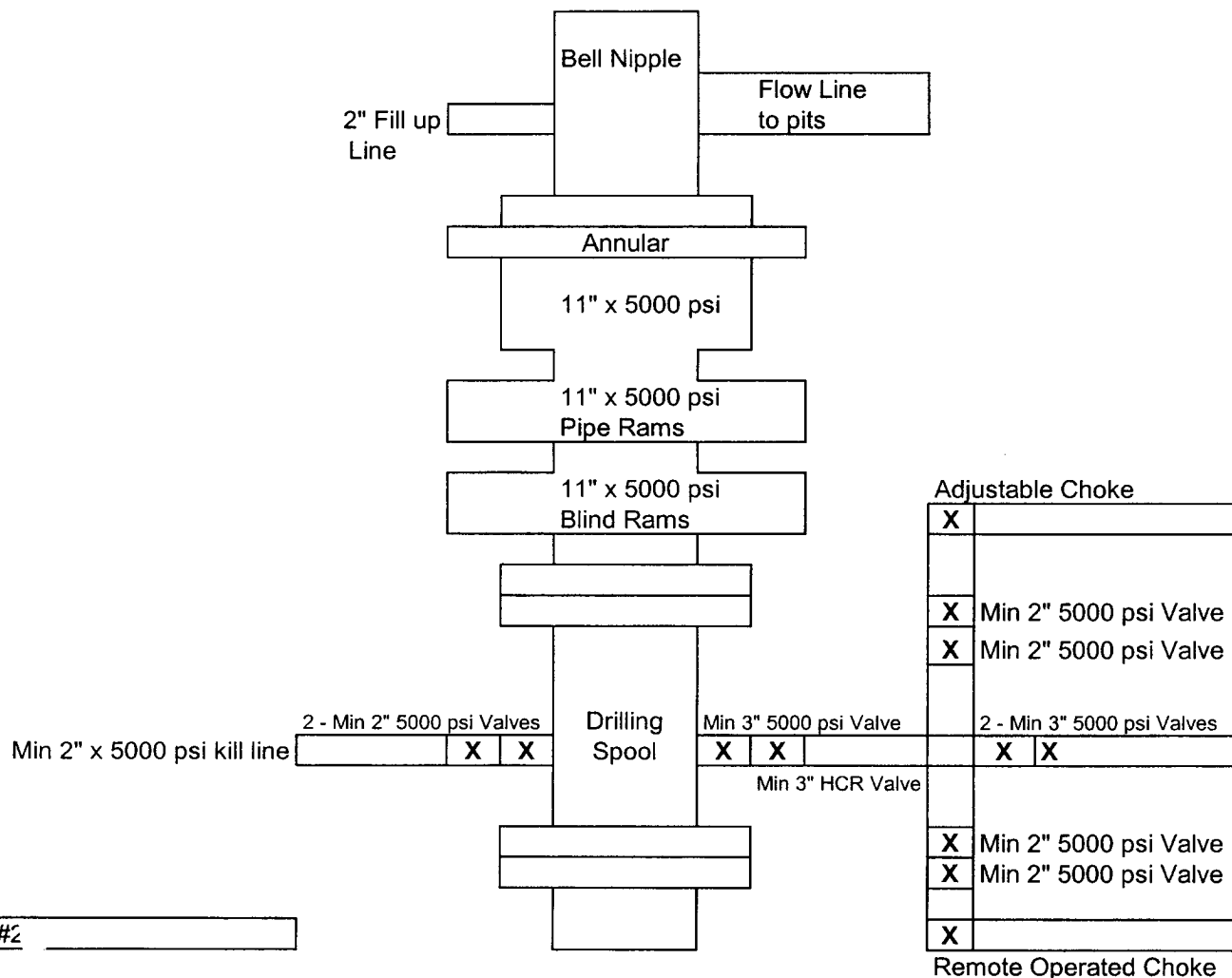
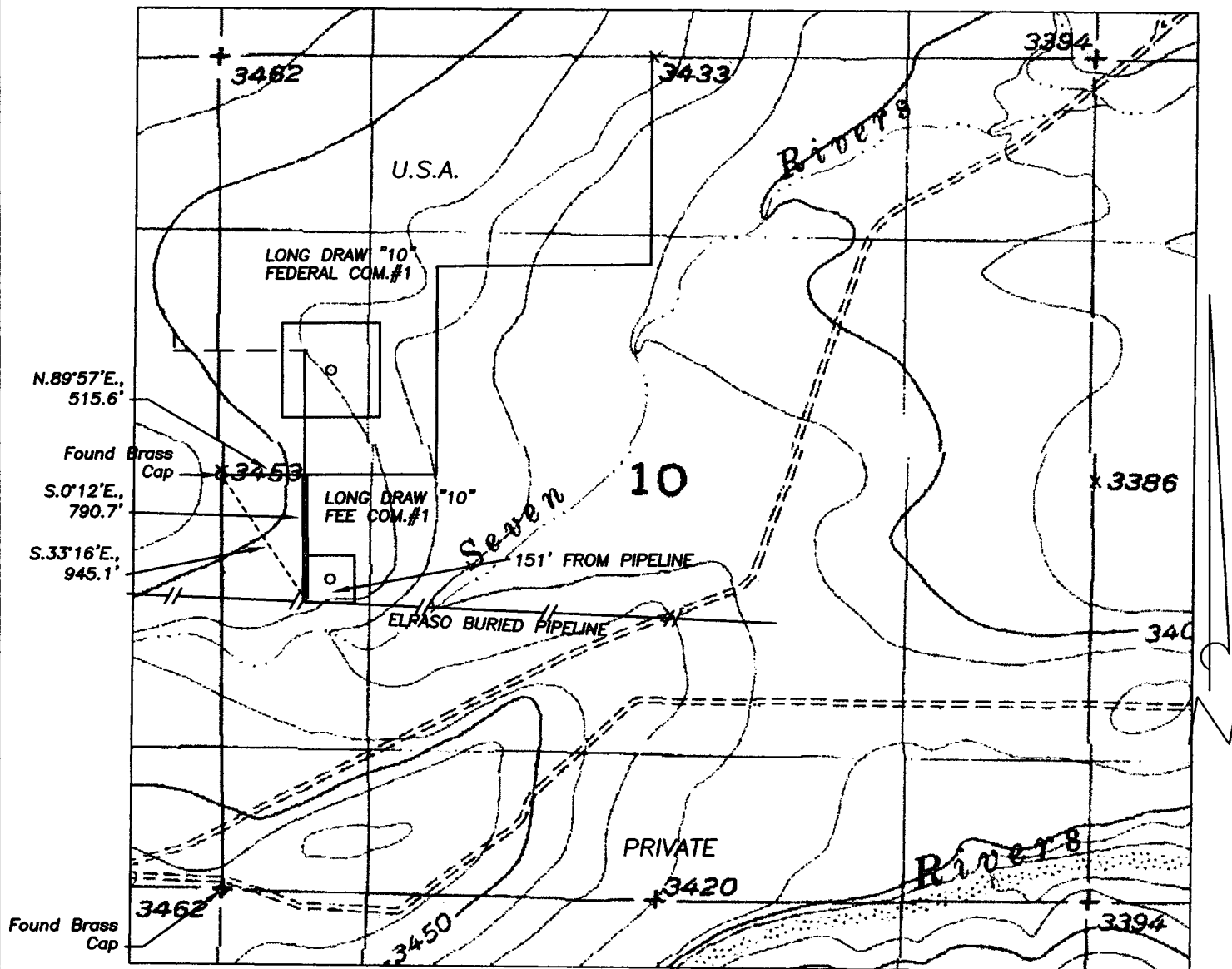


Exhibit #2

Long Draw 10 Fee Com #1  
Sec 10-T20S-R25E  
1980' FSL & 660' FWL  
Eddy County, NM

SECTION 10, TOWNSHIP 20 SOUTH, RANGE 25 EAST, NMPM, EDDY COUNTY, NEW MEXICO.



## Exhibit 3

1000' 0 1000' 2000'  
Scale 1" = 1000'

THE PREPARATION OF THIS PLAT AND THE PERFORMANCE OF THE SURVEY UPON WHICH IT IS BASED WERE DONE UNDER MY DIRECTION AND THE PLAT ACCURATELY DEPICTS THE RESULTS OF SAID SURVEY AND MEET THE REQUIREMENTS OF THE STANDARDS FOR LAND SURVEYS IN NEW MEXICO AS ADOPTED BY THE NEW MEXICO STATE BOARD OF REGISTRATION FOR PROFESSIONAL ENGINEERS AND LAND SURVEYORS.

HERSCHEL L. JONES, R.L.S. No. 3640  
3640

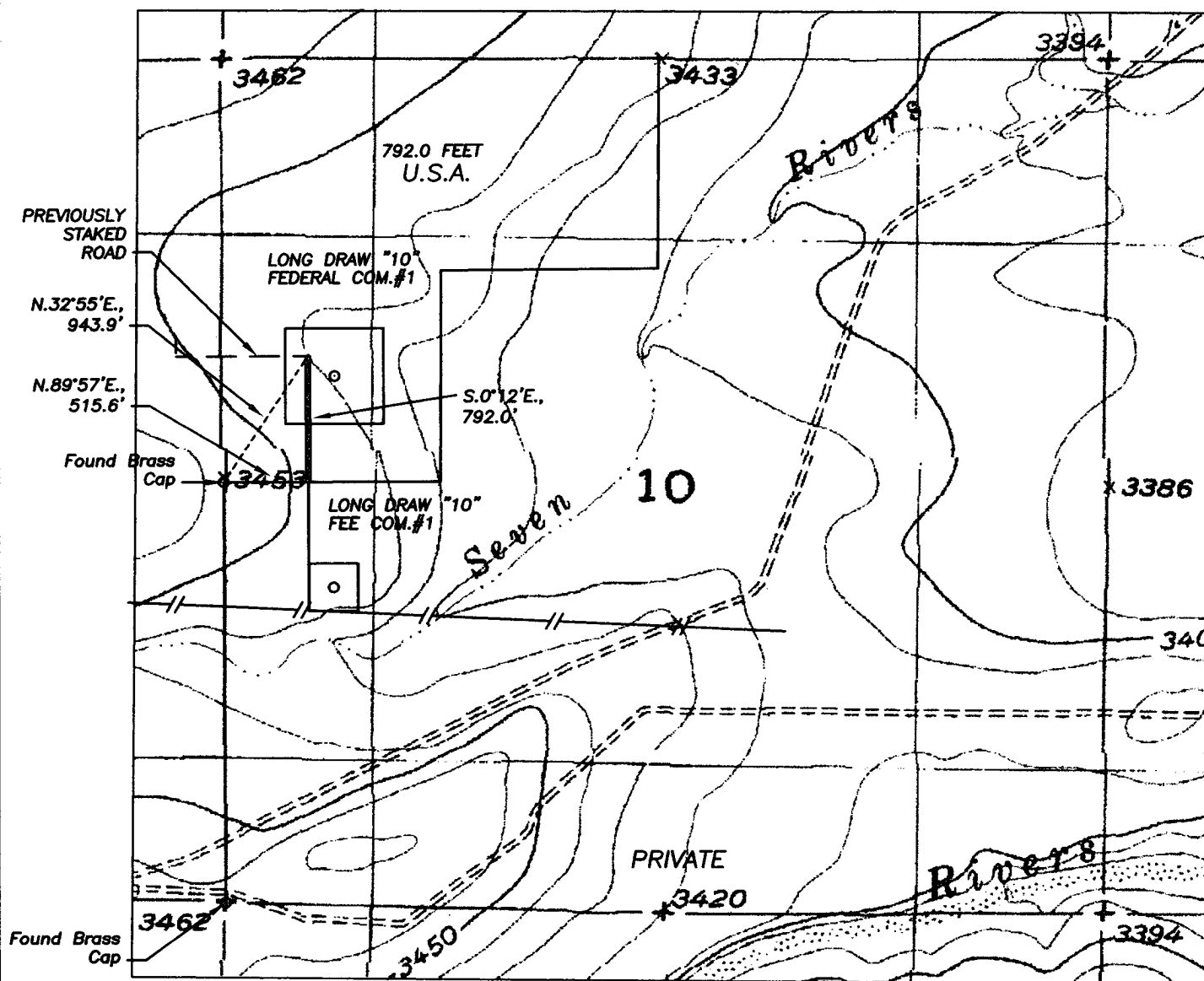
GENERAL SURVEYING COMPANY, P.O. BOX 1928  
LOVINGTON, NEW MEXICO 88260

### MEWBOURNE OIL COMPANY

LEASE ROAD TO ACCESS THE MEWBOURNE LONG DRAW "10" FEE COM.#1 WELL, LOCATED IN SECTION 10, TOWNSHIP 20 SOUTH, RANGE 25 EAST, NMPM, EDDY COUNTY, NEW MEXICO.

Survey Date: 1/26/2006	Sheet 2 of 2 Sheets
Drawn By: Ed Blevins	W.O. Number
Date: 1/26/06	Scale 1" = 1000' LONG DW 1

SECTION 10, TOWNSHIP 20 SOUTH, RANGE 25 EAST, NMPM, EDDY COUNTY, NEW MEXICO.



DESCRIPTION:

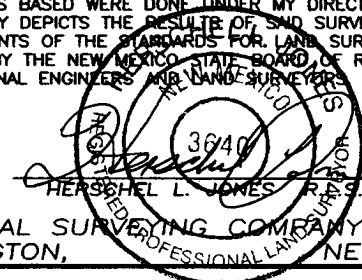
A LEASE ROAD RIGHT OF WAY 30 FEET WIDE AND 792.0 FEET IN LENGTH, BEING 15 FEET TO THE LEFT AND RIGHT OF THE SURVEY CENTERLINE AS SHOWN IN RED ON THIS PLAT.

792.0 FEET = 48.0000 RODS, 0.1500 MILES OR 0.5455 ACRES, MOI

**Exhibit 3-A**

1000' 0 1000' 2000'  
Scale 1" = 1000'

THE PREPARATION OF THIS PLAT AND THE PERFORMANCE OF THE SURVEY UPON WHICH IT IS BASED WERE DONE UNDER MY DIRECTION AND THE PLAT ACCURATELY DEPICTS THE RESULTS OF SAID SURVEY AND MEET THE REQUIREMENTS OF THE STANDARDS FOR LAND SURVEYS IN NEW MEXICO AS ADOPTED BY THE NEW MEXICO STATE BOARD OF REGISTRATION FOR PROFESSIONAL ENGINEERS AND LAND SURVEYORS.



GENERAL SURVEYING COMPANY P.O. BOX 1928  
LOVINGTON, NEW MEXICO 88260

**MEWBOURNE OIL COMPANY**

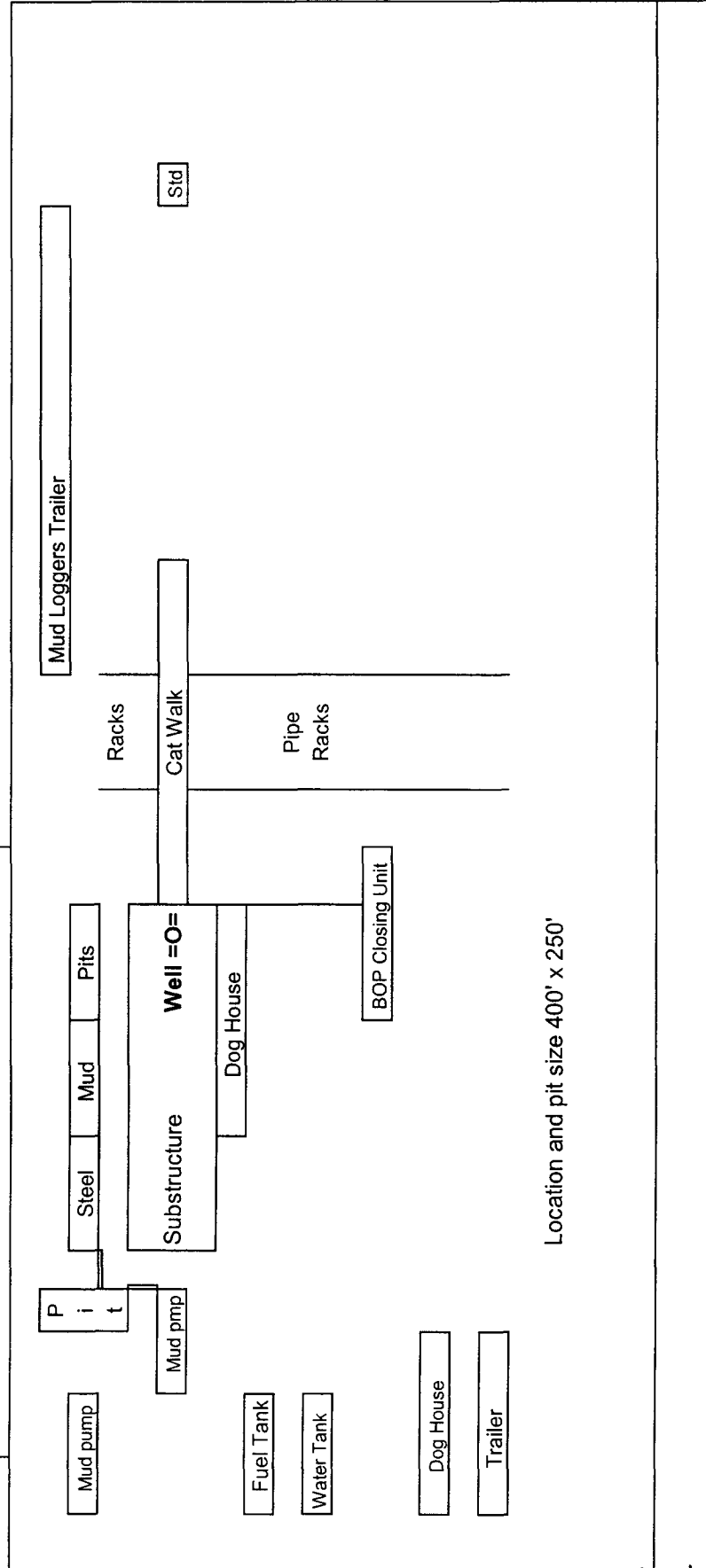
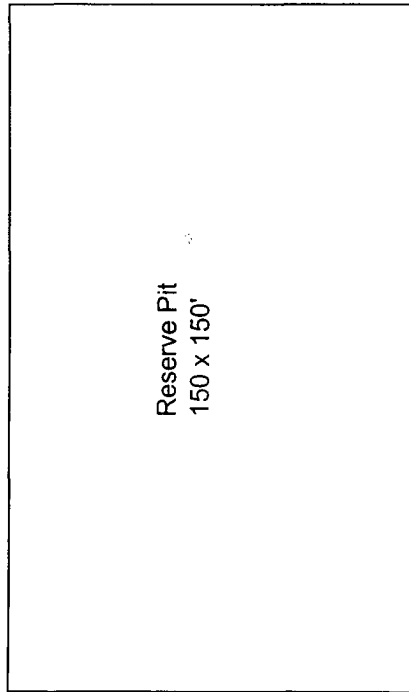
LEASE ROAD TO ACCESS THE MEWBOURNE LONG DRAW "10" FEE COM. #1 WELL, LOCATED IN SECTION 10, TOWNSHIP 20 SOUTH, RANGE 25 EAST, NMPM, EDDY COUNTY, NEW MEXICO.

Survey Date: 1/26/2006	Sheet 1 of 2 Sheets
Drawn By: Ed Blevins	W.O. Number
Date: 1/26/06	Scale 1" = 1000' LONG DW 1

# Mewbourne Oil Company

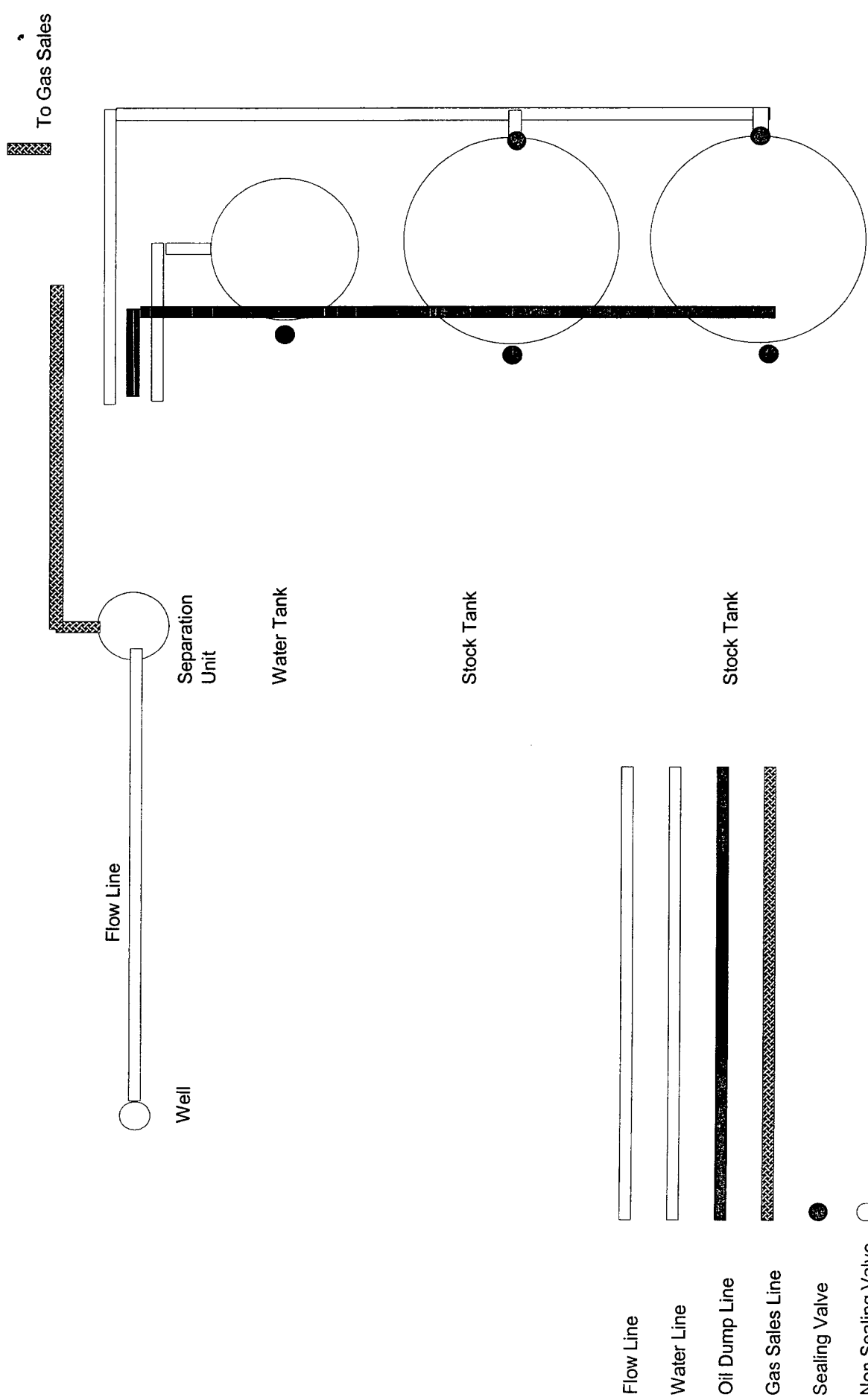
## Exhibit # 4

Well Name	Long Draw 10 Fee Com #1
Footages	Sec 10-T20S-R25E
STR	1980' FSL & 660' FWL
County	Eddy County, NM
State	New Mexico



Rig Location Schematic

Proposed Production Facilities Schematic



Mewbourne Oil Company

Exhibit # 5

Proposed Production Facilities Schematic

Long Draw 10 Fee Com #1

Sec 10-T20S-R25E

1980' FSL & 660' FWL

Eddy County, NM