

NM OIL CONSERVATION

ARTESIA DISTRICT

DISTRICT I
1625 N. French Dr., Hobbs, NM 88240
Phone (575) 393-6161 Fax (575) 393-0720
DISTRICT II
811 S. First St., Artesia, NM 88210
Phone (575) 748-1283 Fax (575) 748-0720
DISTRICT III
1030 Rio Brazos Road, Aztec, NM 87410
Phone (505) 334-6178 Fax (505) 334-6170
DISTRICT IV
1220 S. St. Francis Dr., Santa Fe, NM 87505
Phone (505) 476-3460 Fax (505) 476-3462

State of New Mexico
Energy, Minerals & Natural Resources Department

SEP 10 2015

Form C-102

Revised August 1, 2011

Submit one copy to appropriate
District Office

OIL CONSERVATION DIVISION

1220 South St. Francis Dr.
Santa Fe, New Mexico 87505

RECEIVED

AMENDED REPORT

WELL LOCATION AND ACREAGE DEDICATION PLAT

API Number 30-015-43248	Pool Code 96831	Pool Name Cedar Lake; Glorieta-Yeso
Property Code 308724	Property Name NFE FEDERAL COM	Well Number 59H
GRID No. 873	Operator Name APACHE CORPORATION	Elevation 3837'

Surface Location

UL or lot No.	Section	Township	Range	Lot Idn	Feet from the	North/South line	Feet from the	East/West line	County
I	8	17-S	31-E		1755	SOUTH	25	EAST	EDDY

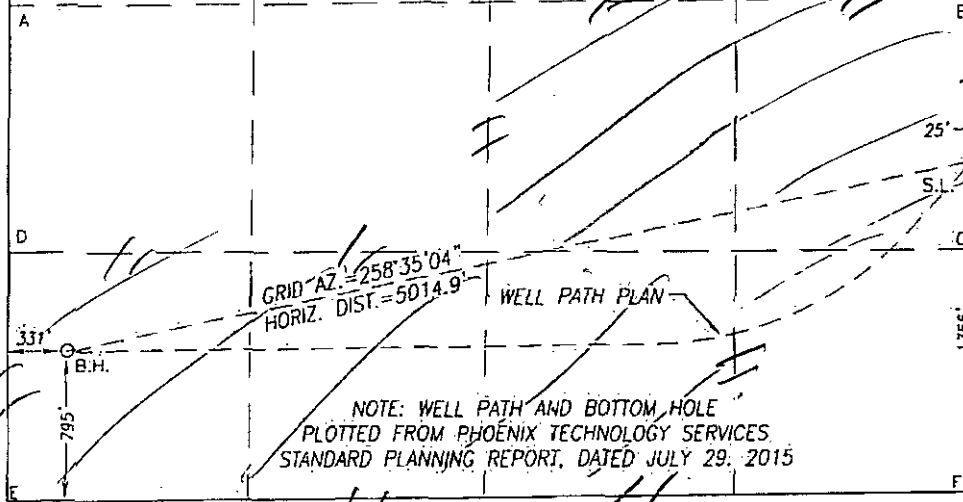
Bottom Hole Location If Different From Surface

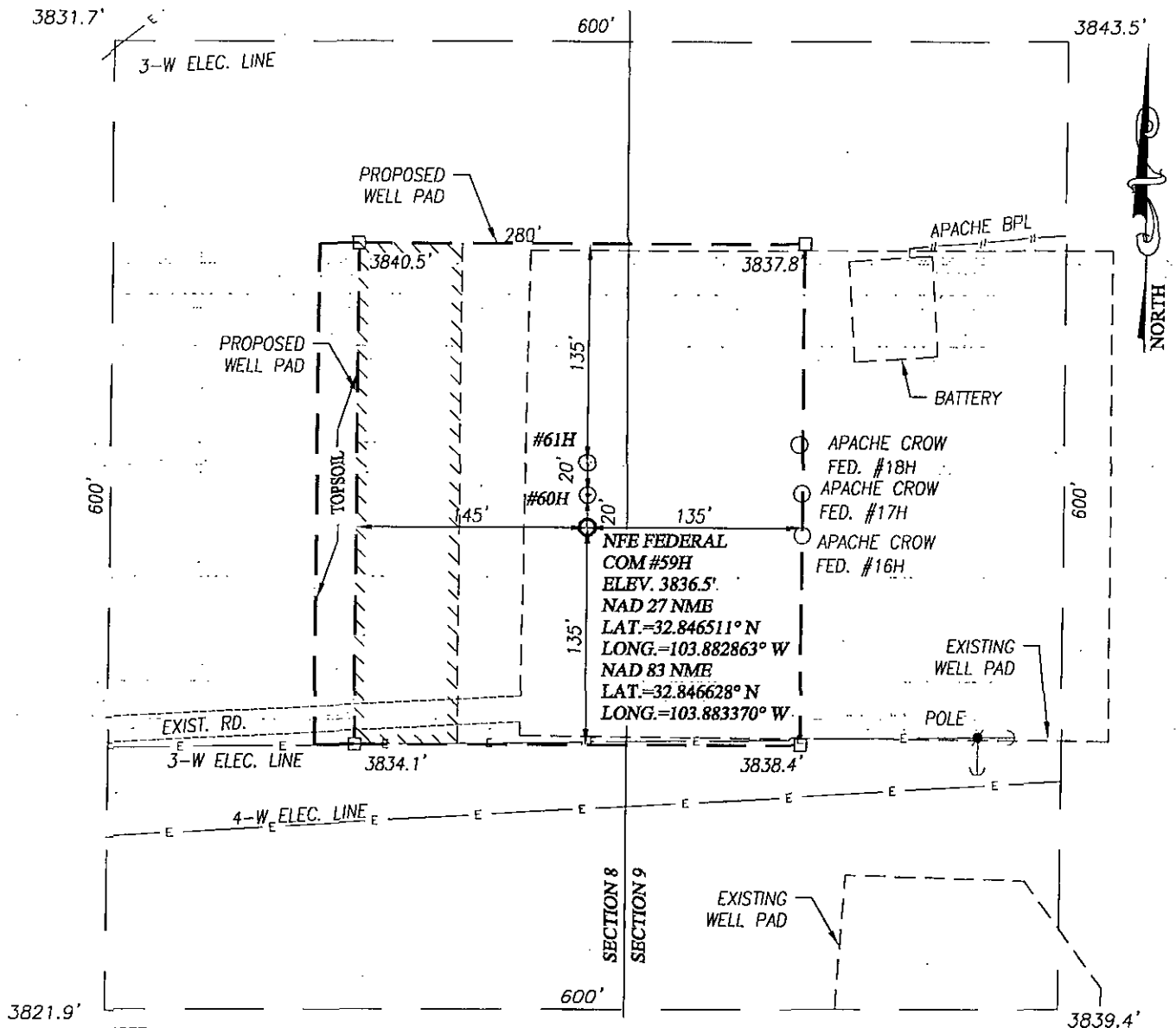
UL or lot No.	Section	Township	Range	Lot Idn	Feet from the	North/South line	Feet from the	East/West line	County
M	8	17-S	31-E		795	SOUTH	331	WEST	EDDY

Dedicated Acres 160 200	Joint or Infill	Consolidation Code	Order No.
----------------------------	-----------------	--------------------	-----------

NO ALLOWABLE WILL BE ASSIGNED TO THIS COMPLETION UNTIL ALL INTERESTS HAVE BEEN CONSOLIDATED OR A NON-STANDARD UNIT HAS BEEN APPROVED BY THE DIVISION

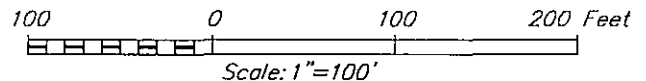
<p>NAD 83 NME BOTTOM HOLE LOCATION Y= 671036.4 N X= 674606.5 E LAT.=32.843951° N LONG.=103.899397° W LAT.=32°50'38" N LONG.=103°53'58" W</p>	<p>CORNER COORDINATES TABLE NAD 83 NME A - Y= 672878.9 N, X= 674265.0 E B - Y= 672916.6 N, X= 679544.3 E C - Y= 671596.5 N, X= 679551.8 E D - Y= 671559.1 N, X= 674272.6 E E - Y= 670239.3 N, X= 674280.2 E F - Y= 670276.4 N, X= 679559.3 E</p>	<p>GEODETIC COORDINATES NAD 83 NME SURFACE LOCATION Y= 672030.8 N X= 679524.4 E LAT.=32.846628° N LONG.=103.883370° W LAT.=32°50'48" N LONG.=103°53'00" W</p>	<p>OPERATOR CERTIFICATION I hereby certify that the information herein is true and complete to the best of my knowledge and belief, and that this organization either owns a working interest or unleased mineral interest in the land including the proposed bottom hole location or has a right to drill this well at this location pursuant to a contract with an owner of such mineral or working interest, or to a voluntary pooling agreement or a compulsory pooling order heretofore entered by the division.</p> <p>Margaret Drennan 09/03/15 Signature Date Margaret Drennan Printed Name margaret.drennan@apachecorp.com E-mail Address</p>
<p>NAD 27 NME BOTTOM HOLE LOCATION Y= 670972.4 N X= 633427.9 E LAT.=32.843834° N LONG.=103.898890° W LAT.=32°50'38" N LONG.=103°53'56" W</p>	<p>CORNER COORDINATES TABLE NAD 27 NME A - Y= 672814.9 N, X= 633086.4 E B - Y= 672852.6 N, X= 638365.7 E C - Y= 671532.5 N, X= 638373.2 E D - Y= 671495.1 N, X= 633093.9 E E - Y= 670175.3 N, X= 633101.5 E F - Y= 670212.4 N, X= 638380.7 E</p>	<p>GEODETIC COORDINATES NAD 27 NME SURFACE LOCATION Y= 671966.8 N X= 638345.7 E LAT.=32.846511° N LONG.=103.882863° W LAT.=32°50'47" N LONG.=103°52'58" W</p>	<p>SURVEYOR CERTIFICATION I hereby certify that the well location shown on this plat was plotted from field notes of actual surveys made by me or under my supervision, and that the same is true and correct to the best of my belief.</p> <p>OCTOBER 27 2014 Date of Survey Signature & Seal of Professional Surveyor Ronald J. Eidson 08/26/2015 Certificate Number Gary G. Eidson 12641 Ronald J. Eidson 3239</p>





NOTE:
1) SEE "LOCATION VERIFICATION MAP"
FOR PROPOSED ROAD LOCATION.

////// DENOTES AREA TO BE RECLAIMED



DIRECTIONS TO NFE FEDERAL COM #59H:

FROM THE INTERSECTION OF U.S. HWY 82 AND CO. RD. 221
(SKELLY) GO NORTH 1.3 MILES TURN RIGHT AND GO
NORTHEAST 0.5 MILES TURN RIGHT AND GO EAST APPROX. 1.5
MILES TO THIS LOCATION.

APACHE CORPORATION

NFE FEDERAL COM #59H WELL
LOCATED 1755 FEET FROM THE SOUTH LINE
AND 25 FEET FROM THE EAST LINE OF SECTION 8,
TOWNSHIP 17 SOUTH, RANGE 31 EAST, N.M.P.M.,
EDDY COUNTY, NEW MEXICO

PROVIDING SURVEYING SERVICES
SINCE 1946

JOHN WEST SURVEYING COMPANY

412 N. DAL PASO HOBBS, N.M. 88240
(575) 393-3117 www.jwsc.biz
TBPLS# 10021000

Survey Date: 10/27/14

CAD Date: 11/5/14

Drawn By: LSL

W.O. No.: 15130014

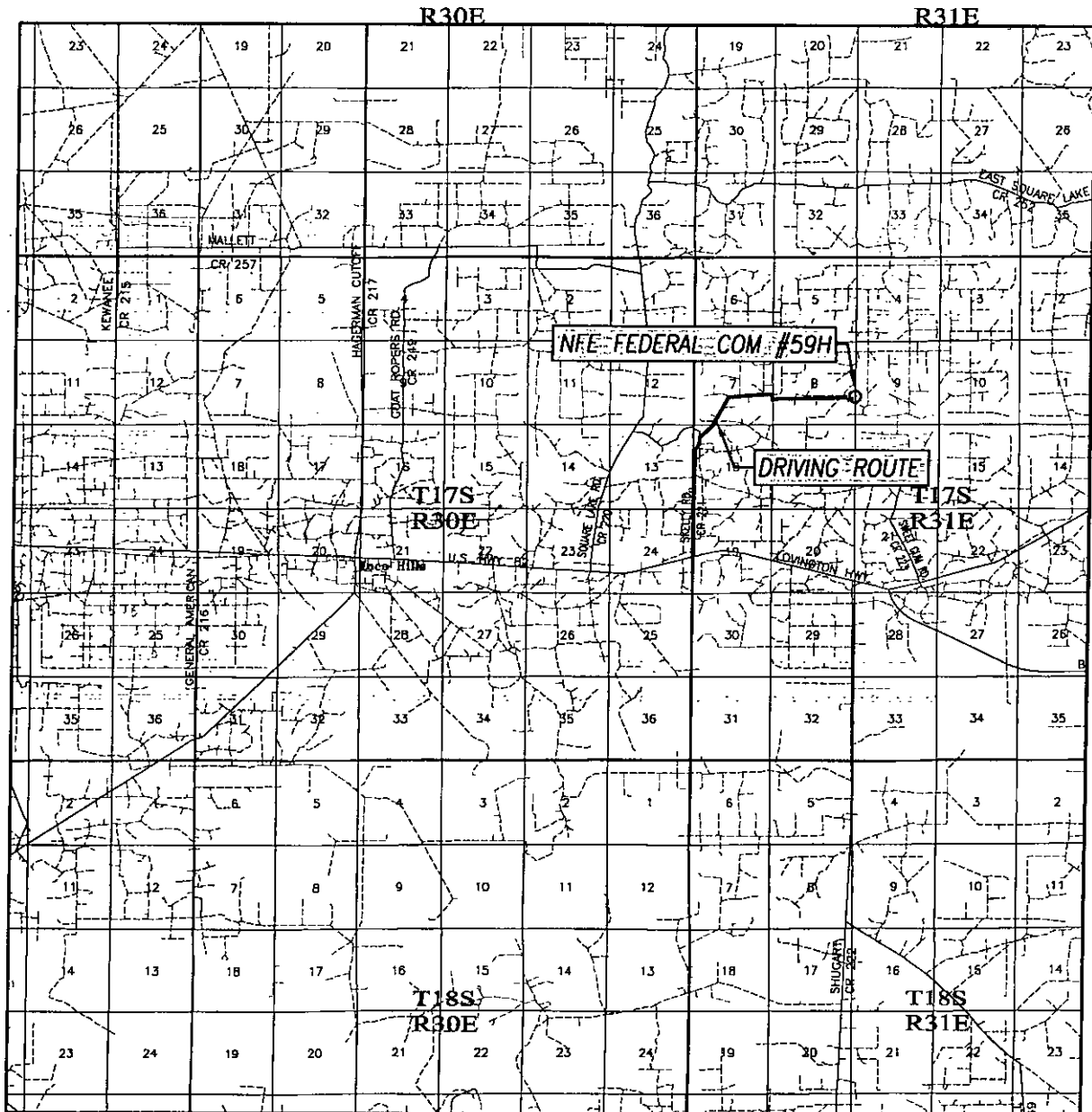
Rev: 8/26/15

Rel. W.O.: 14110984

Sheet 1 of 1




VICINITY MAP



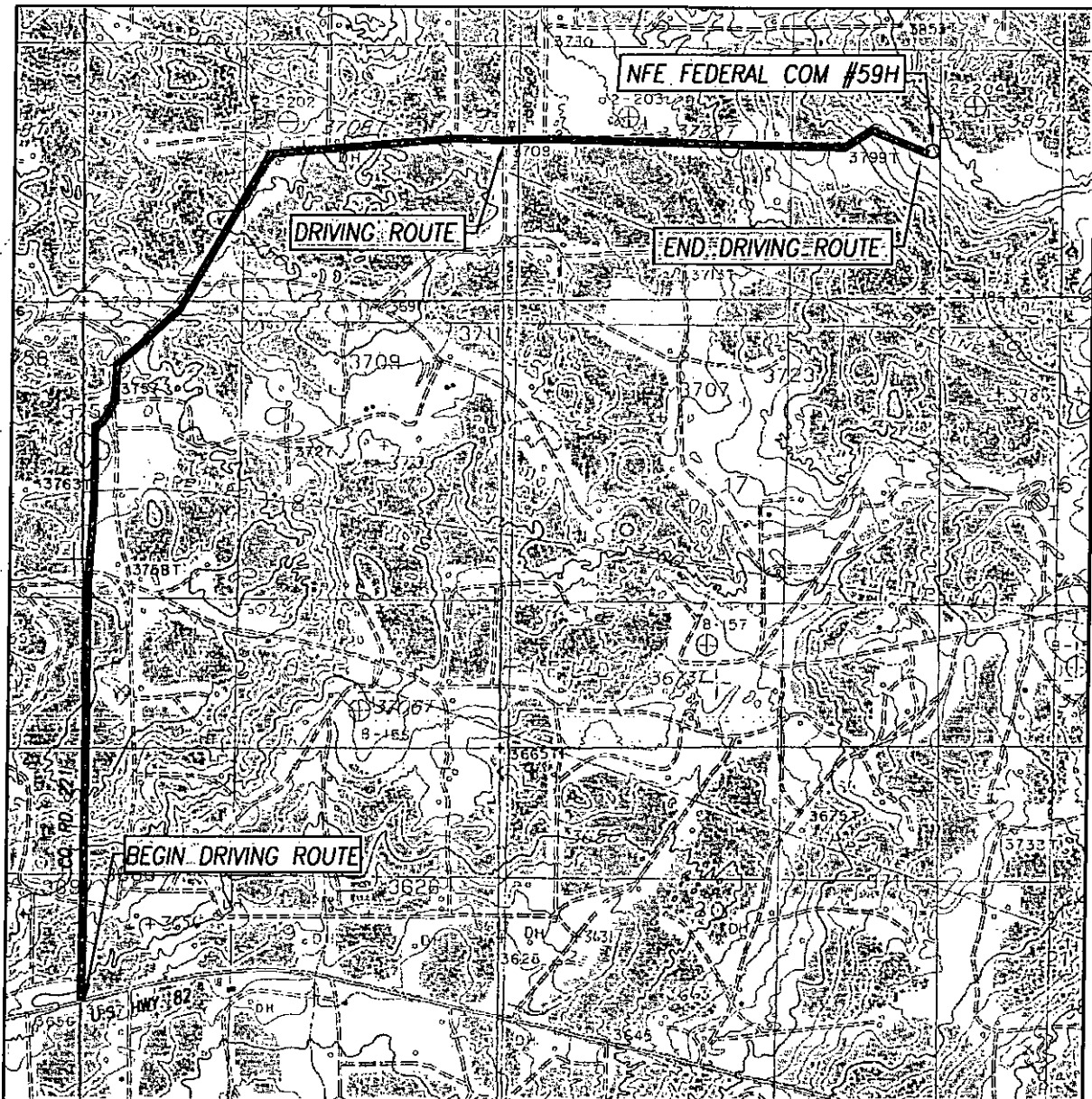
SCALE: 1" = 2 MILES
DRIVING ROUTE: SEE LOCATION VERIFICATION MAP

SEC. 8 TWP. 17-S RGE. 31-E
SURVEY N.M.P.M.
COUNTY EDDY STATE NEW MEXICO
DESCRIPTION 1755' FSL & 25' FEL
ELEVATION 3837'
OPERATOR APACHE CORPORATION
LEASE NFE FEDERAL COM



PROVIDING SURVEYING SERVICES
SINCE 1946
JOHN WEST SURVEYING COMPANY
412 N. DAL PASO HOBBS, N.M. 88240
(575) 393-3117 www.jwsc.biz
TBPLS# 10021000

LOCATION VERIFICATION MAP



SCALE: 1" = 2000'

CONTOUR INTERVAL:
LOCO HILLS, N.M. - 10'

SEC. 8 TWP. 17-S RGE. 31-E

SURVEY N.M.P.M.

COUNTY EDDY STATE NEW MEXICO

DESCRIPTION 1755' FSL & 25' FEL

ELEVATION 3837'

OPERATOR APACHE CORPORATION

LEASE NFE FEDERAL COM

U.S.G.S. TOPOGRAPHIC MAP
LOCO HILLS, N.M.

DIRECTIONS TO NFE FEDERAL COM #59H:

FROM THE INTERSECTION OF U.S. HWY 82 AND CO. RD. 221 (SKELLY)
GO NORTH 1.3 MILES TURN RIGHT AND GO NORTHEAST 0.5 MILES
TURN RIGHT AND GO EAST APPROX. 1.5 MILES TO THIS LOCATION.

PROVIDING SURVEYING SERVICES
SINCE 1946

JOHN WEST SURVEYING COMPANY

412 N. DAL PASO HOBBS, N.M. 88240
(575) 393-3117 www.jwsc.biz
TBPLS# 10021000