

DISTRICT I
1625 N. French Dr., Hobbs, NM 88240
Phone: (575) 393-6161 Fax: (575) 393-0720

DISTRICT II
811 S. First St., Artesia, NM 88210
Phone: (575) 748-1283 Fax: (575) 748-9720

DISTRICT III
1000 Rio Brazos Road, Aztec, NM 87410
Phone: (505) 334-6178 Fax: (505) 334-6170

DISTRICT IV
1220 S. St. Francis Dr., Santa Fe, NM 87505
Phone: (505) 476-3460 Fax: (505) 476-3462

State of New Mexico
Energy, Minerals & Natural Resources Department
OIL CONSERVATION DIVISION
1220 South St. Francis Dr.
Santa Fe, New Mexico 87505

Form C-102
Revised August 1, 2011
Submit one copy to appropriate
District Office

☐ AMENDED REPORT

WELL LOCATION AND ACREAGE DEDICATION PLAT

API Number 30-015-43249	Pool Code 96831	Pool Name Cedar Lake; Glorieta-Yeso
Property Code 308724	Property Name NFE FEDERAL COM	
OGRID No. 873	Operator Name APACHE CORPORATION	
		Well Number 60H
		Elevation 3837'

Surface Location

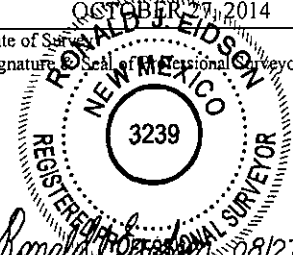
UL or lot No.	Section	Township	Range	Lot Idn	Feet from the	North/South line	Feet from the	East/West line	County
I	8	17-S	31-E		1775	SOUTH	25	EAST	EDDY

Bottom Hole Location If Different From Surface

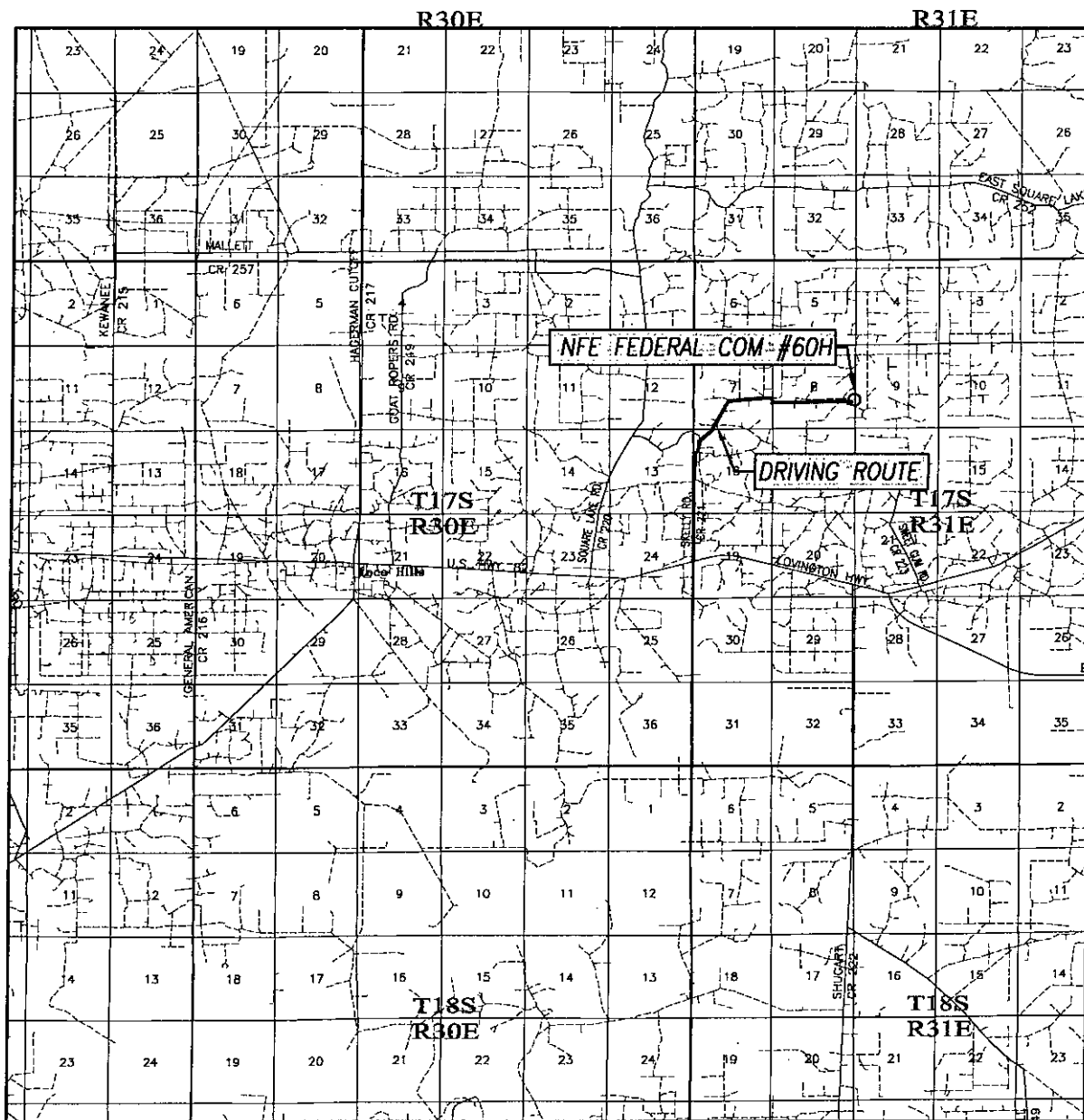
UL or lot No.	Section	Township	Range	Lot Idn	Feet from the	North/South line	Feet from the	East/West line	County
L	8	17-S	31-E		1775	SOUTH	330	WEST	EDDY

Dedicated Acres 160	Joint or Infill	Consolidation Code	Order No.
------------------------	-----------------	--------------------	-----------

NO ALLOWABLE WILL BE ASSIGNED TO THIS COMPLETION UNTIL ALL INTERESTS HAVE BEEN CONSOLIDATED OR A NON-STANDARD UNIT HAS BEEN APPROVED BY THE DIVISION

<p>NAD 83 NME BOTTOM HOLE LOCATION Y = 672016.1 N X = 674599.9 E LAT. = 32.846644° N LONG. = 103.899405° W LAT. = 32°50'48" N LONG. = 103°53'58" W</p>	<p style="text-align: center;">CORNER COORDINATES TABLE NAD 83 NME</p> <p>A - Y = 672878.9 N, X = 674265.0 E B - Y = 672916.6 N, X = 679544.3 E C - Y = 671596.5 N, X = 679551.8 E D - Y = 671559.1 N, X = 674272.6 E</p>	<p>GEODETIC COORDINATES NAD 83 NME SURFACE LOCATION Y = 672050.8 N X = 679524.2 E LAT. = 32.846683° N LONG. = 103.883370° W LAT. = 32°50'48" N LONG. = 103°53'00" W</p>	<p style="text-align: center;">OPERATOR CERTIFICATION</p> <p><i>I hereby certify that the information herein is true and complete to the best of my knowledge and belief, and that this organization either owns a working interest or unleased mineral interest in the land including the proposed bottom hole location or has a right to drill this well at this location pursuant to a contract with an owner of such mineral or working interest, or to a voluntary pooling agreement or a compulsory pooling order heretofore entered by the division.</i></p> <p style="text-align: right;"><i>Margaret Drennan</i> 9/4/15 Signature Date</p> <p>Margaret Drennan Printed Name</p> <p>margaret.drennan@apachecorp.com E-mail Address</p>
<p>NAD 27 NME BOTTOM HOLE LOCATION Y = 671952.2 N X = 633421.2 E LAT. = 32.846527° N LONG. = 103.898898° W LAT. = 32°50'48" N LONG. = 103°53'56" W</p>	<p style="text-align: center;">CORNER COORDINATES TABLE NAD 27 NME</p> <p>A - Y = 672814.9 N, X = 633086.4 E B - Y = 672852.6 N, X = 638365.7 E C - Y = 671532.5 N, X = 638373.2 E D - Y = 671495.1 N, X = 633093.9 E</p>	<p>GEODETIC COORDINATES NAD 27 NME SURFACE LOCATION Y = 671986.8 N X = 638345.6 E LAT. = 32.846566° N LONG. = 103.882864° W LAT. = 32°50'48" N LONG. = 103°52'58" W</p>	<p style="text-align: center;">SURVEYOR CERTIFICATION</p> <p><i>I hereby certify that the well location shown on this plat was plotted from field notes of actual surveys made by me or under my supervision, and that the same is true and correct to the best of my belief.</i></p> <p style="text-align: right;">OCTOBER 27, 2014 Date of Survey</p> <p style="text-align: right;"><i>Ronald J. Eidson</i> Signature of Registered Professional Surveyor</p> <div style="text-align: center;">  </div> <p style="text-align: right;">08/27/2015</p> <p>Certificate Number Gary G. Eidson 12641 Ronald J. Eidson 3239</p> <p>LSL REV. 8/27/15 JWSC W.O.: 15.13.0015</p>

VICINITY MAP



SCALE: 1" = 2 MILES

DRIVING ROUTE: SEE TOPOGRAPHICAL AND ACCESS ROAD MAP

SEC. 8 TWP. 17-S RGE. 31-E

SURVEY N.M.P.M.

COUNTY EDDY STATE NEW MEXICO

DESCRIPTION 1775' FSL & 25' FEL

ELEVATION 3837'

OPERATOR APACHE CORPORATION

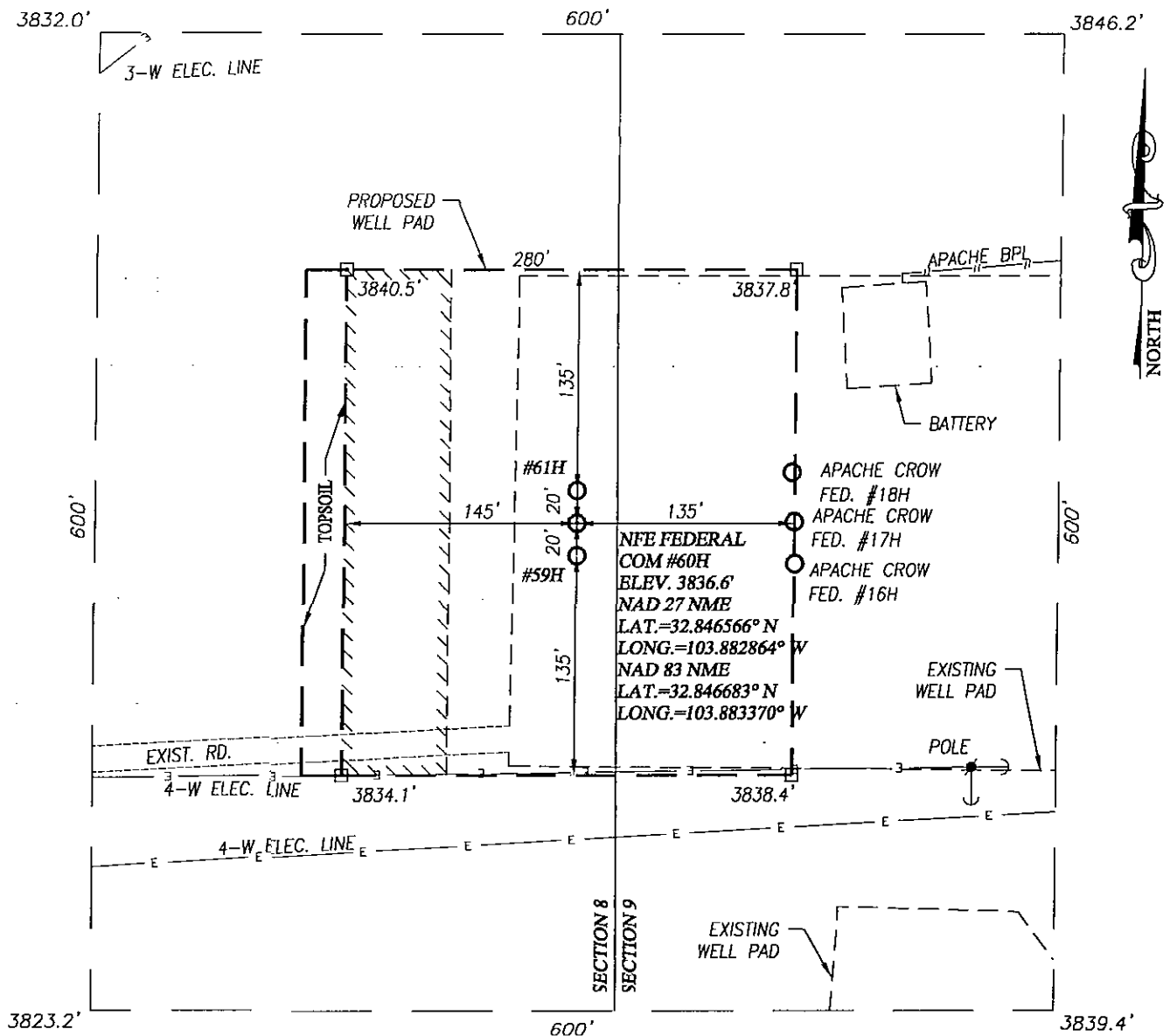
LEASE NFE FEDERAL COM

PROVIDING SURVEYING SERVICES
SINCE 1946

JOHN WEST SURVEYING COMPANY

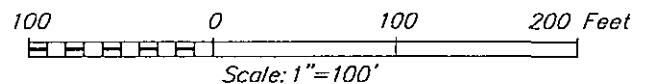
412 N. DAL PASO HOBBS, N.M. 88240
(575) 393-3117 www.jwsc.biz
TBPLS# 10021000

WELL SITE PLAN



NOTE:
1) SEE "TOPOGRAPHICAL AND ACCESS ROAD MAP" FOR PROPOSED ROAD LOCATION.

////// DENOTES AREA TO BE RECLAIMED



DIRECTIONS TO THIS LOCATION:

FROM THE INTERSECTION OF U.S. HWY 82 AND CO. RD. 221 (SKELLY) GO NORTH 1.3 MILES TURN RIGHT AND GO NORTHEAST 0.5 MILES TURN RIGHT AND GO EAST APPROX. 1.5 MILES TO THIS LOCATION.



PROVIDING SURVEYING SERVICES
SINCE 1946
JOHN WEST SURVEYING COMPANY
412 N. DAL PASO HOBBS, N.M. 88240
(575) 393-3117 www.jwsc.biz
TBPLS# 10021000

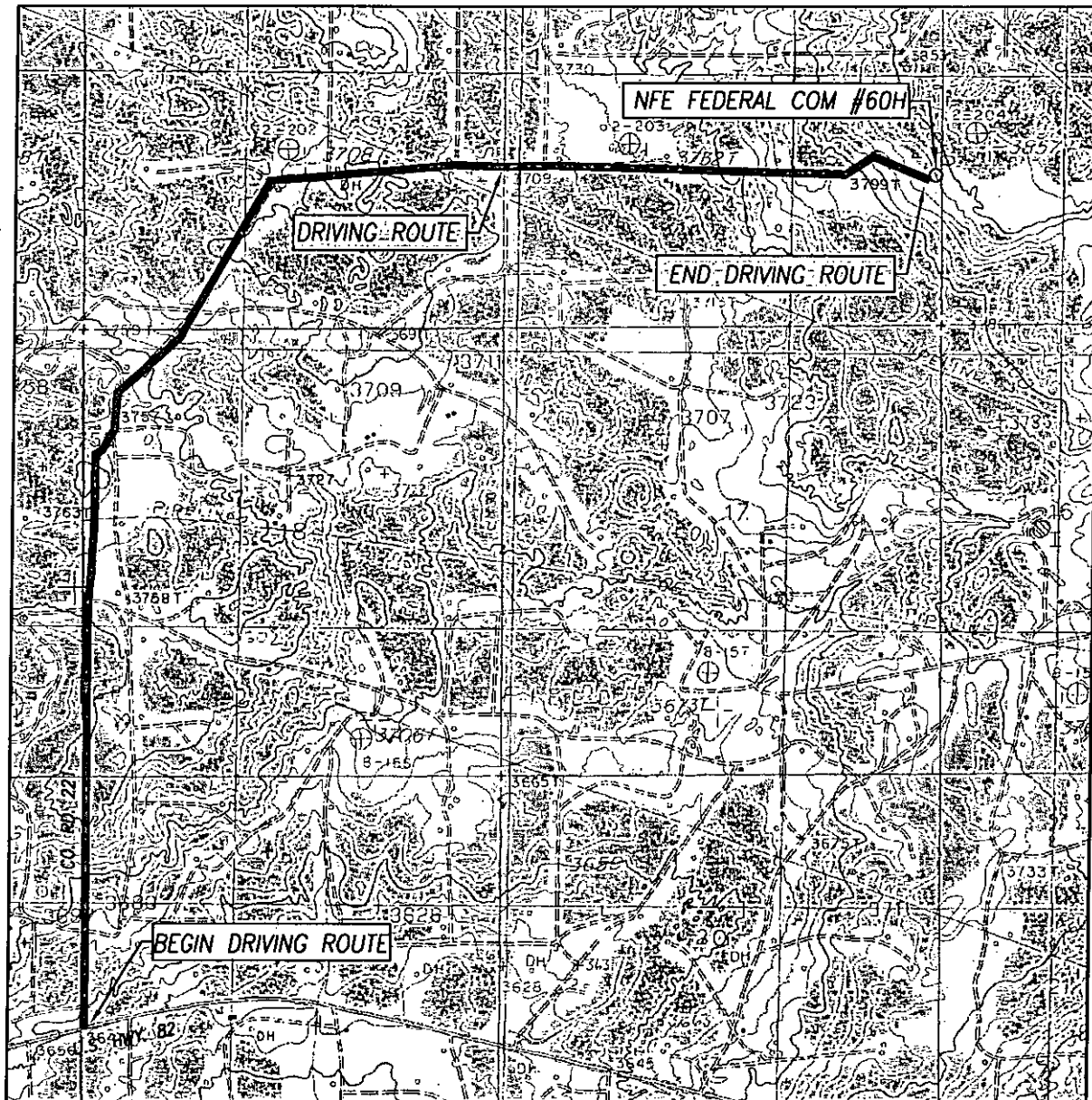
APACHE CORPORATION

NFE FEDERAL COM #60H WELL
LOCATED 1775 FEET FROM THE SOUTH LINE
AND 25 FEET FROM THE EAST LINE OF SECTION 8,
TOWNSHIP 17 SOUTH, RANGE 31 EAST, N.M.P.M.,
EDDY COUNTY, NEW MEXICO

Survey Date: 10/27/14	CAD Date: 11/5/14	Drawn By: LSL
W.O. No.: 15130015	Rev: 8/27/15	Rel. W.O.: 14110983

Sheet 1 of 1

TOPOGRAPHICAL AND ACCESS ROAD MAP



SCALE: 1" = 2000'

CONTOUR INTERVAL:
LOCO HILLS, N.M. - 10'

SEC. 8 TWP. 17-S RGE. 31-E

SURVEY _____ N.M.P.M.

COUNTY EDDY STATE NEW MEXICO

DESCRIPTION 1775' FSL & 25' FEL

ELEVATION 3837'

OPERATOR APACHE CORPORATION

LEASE NFE FEDERAL COM

U.S.G.S. TOPOGRAPHIC MAP
LOCO HILLS, N.M.

DIRECTIONS TO THIS LOCATION:

FROM THE INTERSECTION OF U.S. HWY 82 AND CO. RD. 221 (SKELLY)
GO NORTH 1.3 MILES TURN RIGHT AND GO NORTHEAST 0.5 MILES
TURN RIGHT AND GO EAST APPROX. 1.5 MILES TO THIS LOCATION.

PROVIDING SURVEYING SERVICES
SINCE 1946

JOHN WEST SURVEYING COMPANY

412 N. DAL PASO HOBBS, N.M. 88240
(575) 393-3117 www.jwsc.biz
TBPLS# 10021000