

District I
1625 N. French Dr., Hobbs, NM 88240
District II
1301 W. Grand Avenue, Artesia, NM 88210
District III
1000 Rio Brazos Rd., Aztec, NM 87410
District IV
1220 S. St. Francis Dr., Santa Fe, NM 87505

NM OIL CONSERVATION
ARTESIA DISTRICT
State of New Mexico
Energy, Minerals & Natural Resources Department
OIL CONSERVATION DIVISION
1220 South St. Francis Dr.
Santa Fe, NM 87505

Form C-102
Revised October 12, 2005
Submit to Appropriate District Office
State Lease- 4 Copies
Fee Lease- 3 Copies

☒ AMENDED REPORT

WELL LOCATION AND ACREAGE DEDICATION PLAT

API Number 30-015-40074	Pool Code 96610	Pool Name EMPIRE GLORIETA YESO, EAST
Property Code 309604	Property Name TIGGER "9" STATE	Well Number 3
OCRID No. 192463	Operator Name OXY USA WTP LP	Elevation 3568.1'

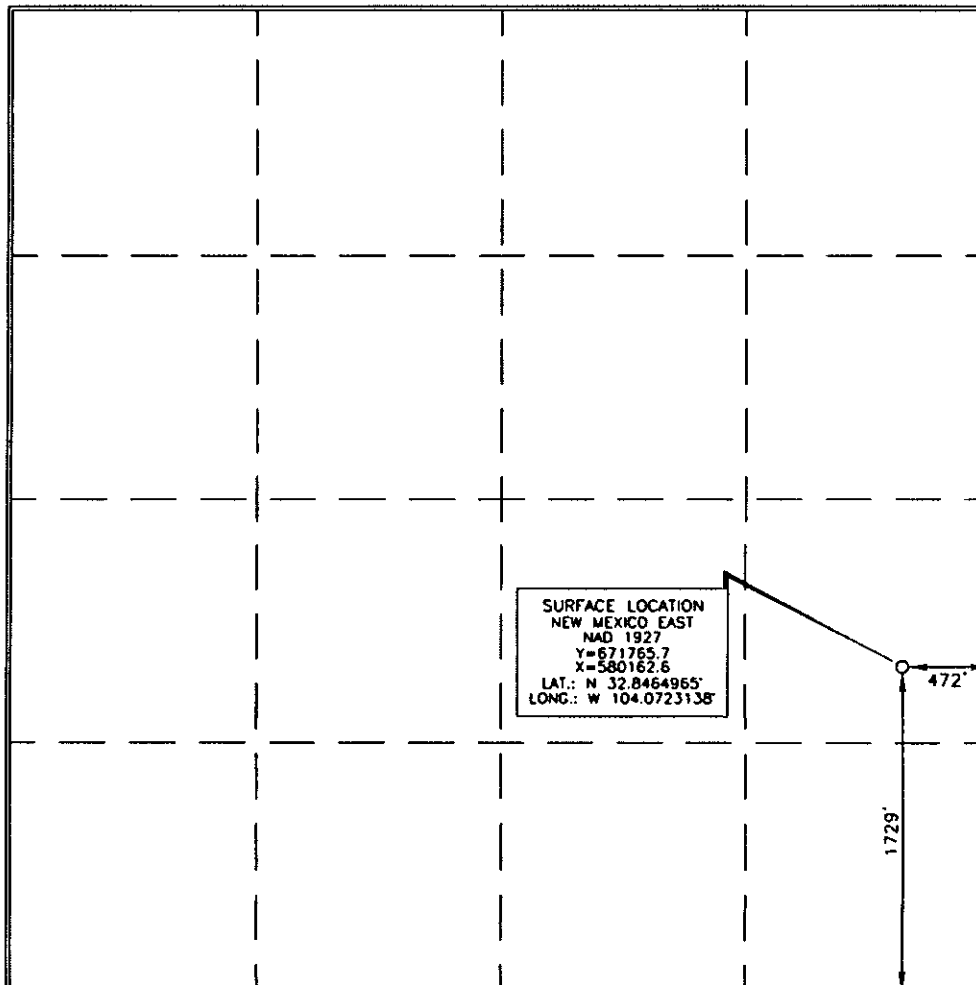
Surface Location

UL or lot no. 1	Section 9	Township 17 SOUTH	Range 29 EAST, N.M.P.M.	Lot Idn	Feet from the 1729'	North/South line SOUTH	Feet from the 472'	East/West line EAST	County EDDY
---------------------------	---------------------	-----------------------------	-----------------------------------	---------	-------------------------------	----------------------------------	------------------------------	-------------------------------	-----------------------

Bottom Hole Location If Different From Surface

UL or lot no.	Section	Township	Range	Lot Idn	Feet from the	North/South line	Feet from the	East/West line	County
Dedicated Acres 40		Joint or Infill N	Consolidation Code	Order No.					

No allowable will be assigned to this completion until all interests have been consolidated or a non-standard unit has been approved by the division.



OPERATOR CERTIFICATION

I hereby certify that the information contained herein is true and complete to the best of my knowledge and belief, and that this organization either owns a working interest or unleased mineral interest in the land including the proposed bottom hole location or has a right to drill this well at this location pursuant to a contract with an owner of such a mineral or working interest, or to a voluntary pooling agreement or a compulsory pooling order heretofore entered by the division.

[Signature] 10/5/15
Signature Date

Jana Mendola
Printed Name

SURVEYOR CERTIFICATION

I hereby certify that the well location shown on this plat was located from field notes of actual surveys made by me or under my supervision, and that the same is true and correct to the best of my belief.

15079
OCTOBER 27, 2011
Date of Survey

[Signature]
Signature and Seal of Professional Surveyor

[Signature] 11/9/2011
Certificate Number 15079

WOL 111027WL-C (KA)