

Submit 1 Copy To Appropriate District Office  
District I - (575) 393-6161  
1625 N. French Dr., Hobbs, NM 88240  
District II - (575) 748-1283  
811 S. First St., Artesia, NM 88210  
District III - (505) 334-6178  
1000 Rio Brazos Rd., Aztec, NM 87410  
District IV - (505) 476-3460  
1220 S. St. Francis Dr., Santa Fe, NM 87505

State of New Mexico  
Energy, Minerals, and Natural Resources  
ARTESIA DISTRICT

OIL CONSERVATION DIVISION  
1220 South St. Francis Dr.  
Santa Fe, NM 87505

Form C-103  
Revised August 1, 2011

SUNDRY NOTICES AND REPORTS ON WELLS (DO NOT USE THIS FORM FOR PROPOSALS TO DRILL OR TO DEEPEN OR PLUG BACK TO A DIFFERENT RESERVOIR. USE "APPLICATION FOR PERMIT" (FORM C-101) FOR SUCH PROPOSALS.)		WELL API NO. <b>30-015-35678</b>
1. Type of Well: Oil Well <input checked="" type="checkbox"/> Gas Well <input type="checkbox"/> Other <input type="checkbox"/>		5. Indicate Type of Lease STATE <input checked="" type="checkbox"/> FEE <input type="checkbox"/>
2. Name of Operator <b>TLT SWD, LLC</b>		6. State Oil & Gas Lease No.
3. Address of Operator <b>PO Box 1906 Hobbs, NM 88241</b>		7. Lease Name or Unit Agreement Name <b>State 2</b>
4. Well Location Unit Letter <b>G</b> : <b>1980</b> feet from the <b>North</b> line and <b>1980</b> feet from the <b>East</b> line Section <b>2</b> Township <b>23S</b> Range <b>31E</b> NMPM <b>Eddy County</b>		8. Well Number <b>001</b>
11. Elevation (Show whether DR, RKB, RT, GR, etc.)		9. OGRID Number <b>287481</b>
		10. Pool name or Wildcat <b>Livingston Ridge: Delaware SE</b>

12. Check Appropriate Box to Indicate Nature of Notice, Report or Other Data

NOTICE OF INTENTION TO:  
PERFORM REMEDIAL WORK ☐ PLUG AND ABANDON ☒  
TEMPORARILY ABANDON ☐ CHANGE PLANS ☐  
PULL OR ALTER CASING ☐ MULTIPLE COMPL ☐  
DOWNHOLE COMMINGLE ☐

SUBSEQUENT REPORT OF:  
REMEDIAL WORK ☐ ALTERING CASING ☐  
COMMENCE DRILLING OPNS. ☐ P AND A ☐  
CASING/CEMENT JOB ☐

OTHER: ☐

OTHER: ☐

13. Describe proposed or completed operations. (Clearly state all pertinent details, and give pertinent dates, including estimated date of starting any proposed work). SEE RULE 19.15.7.14 NMAC. For Multiple Completions: Attach wellbore diagram of proposed completion or recompletion.

TLT proposes to PA State 2 # 1 - Please see attachments

Spud Date: well bore must be plugged by 10/15/2016

Rig Release Date:

Approved for plugging of well bore only.  
Liability under bond is retained pending receipt of C-103 (Subsequent Report of Well Plugging) which may be found at OCD Web Page under Form C-103.  
For more: [www.ohmrd.state.nm.us/oed](http://www.ohmrd.state.nm.us/oed).

I hereby certify that the information above is true and complete to the best of my knowledge and belief.

SIGNATURE Billy E. Prichard TITLE Agent for TLT SWD

DATE 10/6/15

Type or print name **Billy E. Prichard**  
For State Use Only

E-mail address: billy@pwillc.net

PHONE: 432-934-7680

APPROVED BY: R. Dade  
Conditions of Approval (if any):

TITLE DIST. PS. supervisor

DATE 10/15/2015

★ See Attached COA's & changes

NM OIL CONSERVATION  
ARTESIA DISTRICT

OCT 09 2015

RECEIVED

RECEIVED

OCT 09 2015

ARTESIA DISTRICT

NM OIL CONSERVATION

TLT SWD, L.L.C.  
State 2 # 1  
API # 30-015-35678  
Unit Letter "G", Section 2, T23S, R31E  
1980 FNL X 1980 FEL  
Eddy County, NM

Well Data X PA Procedure

Spud 7/25/2007 as Delaware oil well

13 3/8" 48# H40 casing set at 897' in 17 1/2" hole, cemented with 835 sacks cement. Cement circulated to surface.

8 5/8" 32# J55 casing set at ~~4388'~~ <sup>4433'</sup> in 11" hole, cemented with 1265 sacks of cement. Cement circulated to surface.

5 1/2" 17# L80 casing set at 8407' in 7 7/8" hole, cemented in 2 Stages with DV tool at 6389'

1<sup>st</sup> Stage - 375 sacks cement x circulate above DV tool per calculations

2<sup>nd</sup> Stage - 730 sacks cement. Top of cement at 3700' per CBL

Perforations 6910-8238'

---

Run and set CIBP at 6860'

Spot 50 sks cement of CIBP x WOC x tag cmt plug 6360' or above

Displace well with gelled brine water

Spot 40 sks cmt plug at ~~4438'~~ <sup>4483'</sup> up to 4383'

Lamar Lime x Intermediate casing shoe x base of salt plug

Perforate 1106'

Circulate cement to surface ( 300 sks)

Top of Salt x Surface casing shoe x surface plug

Leave well full of cement

Cut of well head and install PA marker

Cut off service unit anchors and prep location for release



[www.pwllc.net](http://www.pwllc.net)

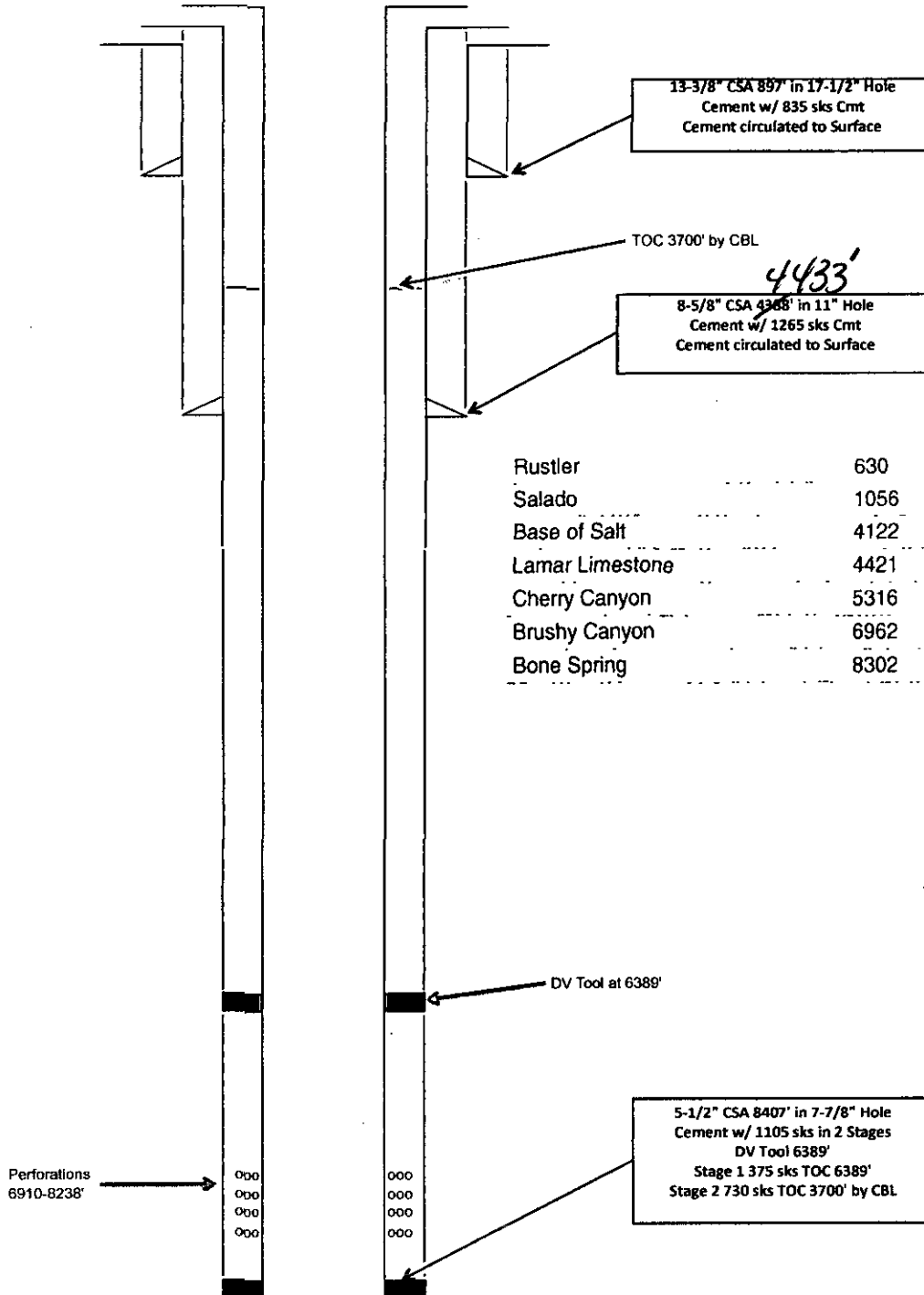
# CURRENT WELLBORE DIAGRAM

TLT SWD, L.L.C.

State 2 # 1

API # 30-15-35678

1980 FNL x 1980' FEL, UL 'G' Sec 2, T23S, R31E, Eddy County, NM  
SI Oil Producer



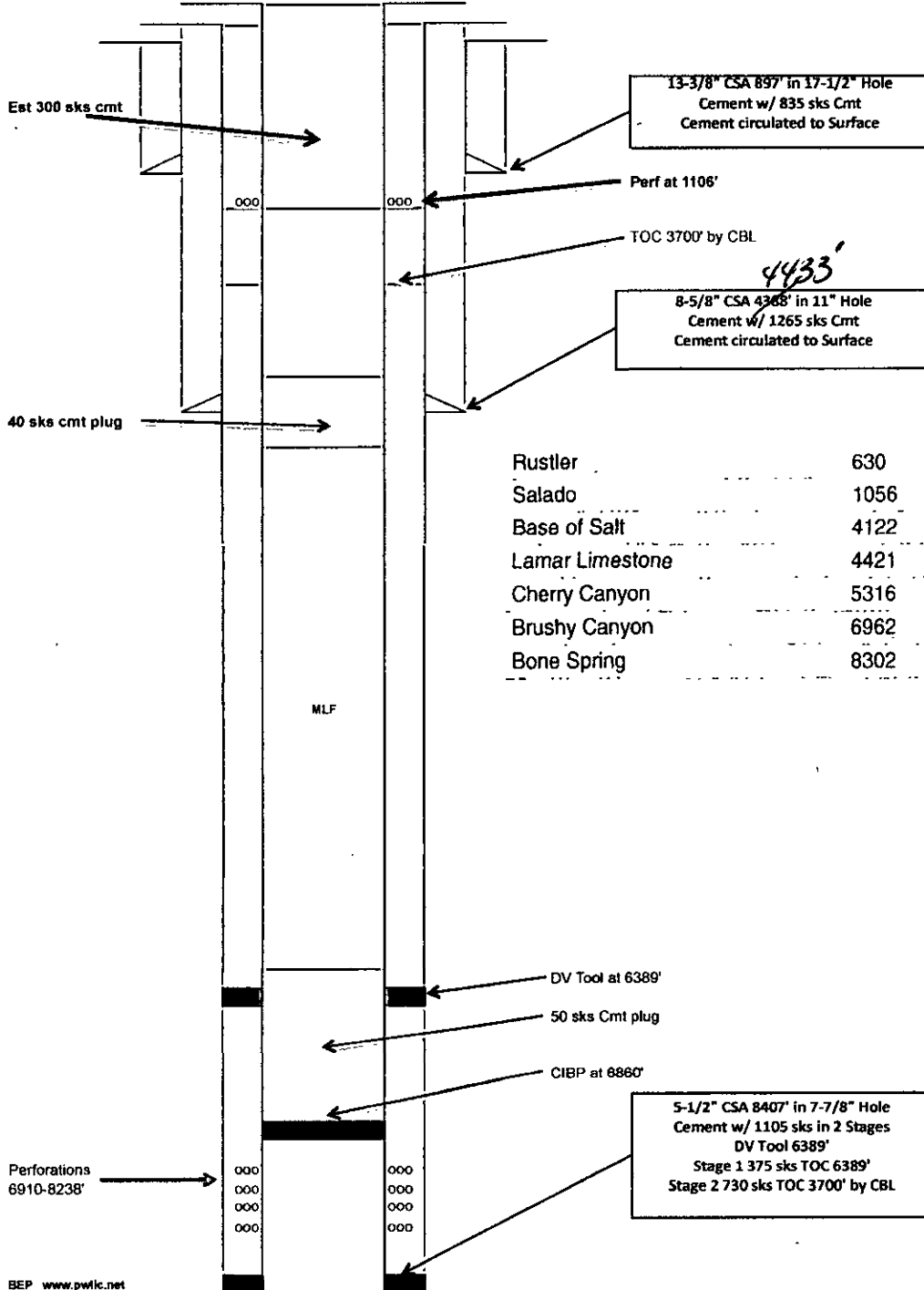
# PA WELLBORE DIAGRAM

TLT SWD, L.L.C.

State 2 # 1

API # 30-15-35678

1980 FNL x 1980' FEL, UL 'G' Sec 2, T23S, R31E, Eddy County, NM  
SI Oil Producer



NEW MEXICO OIL CONSERVATION DIVISION  
DISTRICT 2 OFFICE  
811 S. FIRST STREET  
ARTESIA, NM 88210  
(575)748-1283

**CONDITIONS OF APPROVAL FOR PLUGGING & ABANDONMENT**

Operator: TLT SWD

Well Name & Number: State 2 #1

API #: 30-015-35678

1. Produced water will not be used during any part of the plugging & abandonment operation.
2. Notify NMOCD Dist. 2 office at least 24 hrs before beginning work.
3. Closed Loop System is to be used for entire plugging operation. Upon completion, contents of steel pit are to be hauled to a permitted disposal location.
4. Trucking companies being used to haul oilfield waste fluids to a disposal – commercial or private – shall have an approved NMOCD C-133 permit. A copy of this permit shall be available in each truck used to haul waste products. It is the responsibility of the operator, as well as the contractor, to verify that this permit is place prior to performing work. Drivers shall produce a copy upon request of NMOCD Field Inspectors.
5. A subsequent C-103 will serve as notification that the well bore has been plugged ONLY. A C-103 FINAL shall be filed before any bonding can be released on the well. Upon receipt of the Final, an inspection will be performed to verify that the location has been satisfactorily cleaned to NMOCD standards.
6. If work has not begun within 90 days of the approval of this procedure, an extension request must be filed, stating reason that well has not been plugged.
7. Every attempt must be made to clean the well bore out to below the perms, before any plugs can be set, by whatever means possible.
8. Cement Retainers may not be used.
9. Squeeze pressures are not to exceed 500 PSI, unless approval is given by NMOCD.
10. Plugs may be combined after consulting with and getting approval from NMOCD.
11. Minimum WOC time for tag plugs will be 4 Hrs.

*hld*

*10/15/2015*

## GUIDELINES FOR PLUGGING AND ABANDONMENT

### DISTRICT II / ARTESIA

- All cement plugs will be a minimum of 100' in length or a minimum of 25 sacks of cement, whichever is greater.
- Mud laden fluids must be placed between all cement plugs.
- Mud laden fluids must be mixed at 25 sacks of gel per 100 bbls of water.
- A cement plug is required to be set 50' below and 50' above all casing shoes and casing stub plugs. These plugs must be tagged.
- A CIBP with 35' of cement on top may be set in lieu of 100' cement plug.
- A plug as indicated above must be placed within 100' of top perforation. This plug must be tagged.
- Plugs set below and above salt zones must be tagged.
- No more than 2000' is to be allowed between cement plugs in open hole and no more than 3000' in cased hole.
- DV tools are required to have a 100' cement plug set 50' above and below the tool and must be tagged.
- Formations to be isolated with plugs placed at the top of each formation are:
  - Fusselman
  - Devonian
  - Morrow
  - Wolfcamp
  - Bone Spring
  - Delaware
  - Any Salt Section (Plug at top and bottom)
  - Abo
  - Glorieta
  - Yates (this plug is usually at base of salt section)
- If cement does not exist behind casing strings at recommended formation depths, the casing must be cut and pulled with plugs set at these depths or casing must be perforated and cement squeezed behind casing at the formation depths.
- In the R-111-P area (Potash Mine area) a solid cement plug must be set across the salt section. Fluid used to mix the cement shall be saturated with the salts common to the section penetrated and in suitable proportions, but not more than a 3% calcium chloride by weight of cement will be considered the desired mixture whenever possible (50' below and 50' above).