

UNITED STATES  
DEPARTMENT OF THE INTERIOR  
BUREAU OF LAND MANAGEMENT**SUNDRY NOTICES AND REPORTS ON WELLS**  
*Do not use this form for proposals to drill or to re-enter an abandoned well. Use form 3160-3 (APD) for such proposals.*

HOBBS OCD

OCT 26 2015

RECEIVED

FORM APPROVED  
OMB NO. 1004-0135  
Expires: July 31, 20105. Lease Serial No.  
NMLC068282B

6. If Indian, Allottee or Tribe Name

7. If Unit or CA/Agreement, Name and/or No.

**SUBMIT IN TRIPLICATE - Other instructions on reverse side.**8. Well Name and No.  
GOLDEN SPUR 36 COM W1 2H9. API Well No.  
30-015-4337510. Field and Pool, or Exploratory  
WC-015 G-08 5263125P; WOL11. County or Parish, and State  
EDDY COUNTY, NM1. Type of Well  
☒ Oil Well ☐ Gas Well ☐ Other2. Name of Operator  
CONOCOPHILLIPS  
Contact: ASHLEY BERGEN  
E-Mail: ashley.bergen@conocophillips.com3a. Address  
P.O. BOX 51810  
MIDLAND, TX 797103b. Phone No. (include area code)  
Ph: 432-688-69384. Location of Well (Footage, Sec., T., R., M., or Survey Description)  
Sec 36 T26S R31E Mer NMP SENE 315FSL 570FWL

## 12. CHECK APPROPRIATE BOX(ES) TO INDICATE NATURE OF NOTICE, REPORT, OR OTHER DATA

TYPE OF SUBMISSION	TYPE OF ACTION			
<input checked="" type="checkbox"/> Notice of Intent	<input type="checkbox"/> Acidize	<input type="checkbox"/> Deepen	<input type="checkbox"/> Production (Start/Resume)	<input type="checkbox"/> Water Shut-Off
<input type="checkbox"/> Subsequent Report	<input type="checkbox"/> Alter Casing	<input type="checkbox"/> Fracture Treat	<input type="checkbox"/> Reclamation	<input type="checkbox"/> Well Integrity
<input type="checkbox"/> Final Abandonment Notice	<input type="checkbox"/> Casing Repair	<input type="checkbox"/> New Construction	<input type="checkbox"/> Recomplete	<input checked="" type="checkbox"/> Other
	<input type="checkbox"/> Change Plans	<input type="checkbox"/> Plug and Abandon	<input type="checkbox"/> Temporarily Abandon	Change to Original A
	<input type="checkbox"/> Convert to Injection	<input type="checkbox"/> Plug Back	<input type="checkbox"/> Water Disposal	PD

13. Describe Proposed or Completed Operation (clearly state all pertinent details, including estimated starting date of any proposed work and approximate duration thereof. If the proposal is to deepen directionally or recompleat horizontally, give subsurface locations and measured and true vertical depths of all pertinent markers and zones. Attach the Bond under which the work will be performed or provide the Bond No. on file with BLM/BIA. Required subsequent reports shall be filed within 30 days following completion of the involved operations. If the operation results in a multiple completion or recompleat in a new interval, a Form 3160-4 shall be filed once testing has been completed. Final Abandonment Notices shall be filed only after all requirements, including reclamation, have been completed, and the operator has determined that the site is ready for final inspection.)

ConocoPhillips respectfully requests to amend the approved APD. COP will be using rig, Precision 822 instead of Pinnergy #1 to pre-set surface casing and the 1st intermediate string. The well above is planned to spud 10/20/15. Please see the following attachments:

- Spudder Rig and Skid Operations Description
- BOP/BOPE and Choke Manifold Schematic
- Coflex Choke Line Test Certificate
- Spudder Rig Specifications/ Layout

Accepted for record  
NMOC

NM OIL CONSERVATION  
ARTESIA DISTRICT

NOV 12 2015

RECEIVED

14. I hereby certify that the foregoing is true and correct. <b>Electronic Submission #319184 verified by the BLM Well Information System For CONOCOPHILLIPS, sent to the Carlsbad</b>	
Name (Printed/Typed) ASHLEY BERGEN	Title REGULATORY SPECIALIST
Signature (Electronic Submission)	Date 10/08/2015

## THIS SPACE FOR FEDERAL OR STATE OFFICE USE

Approved By _____	Title _____	Date _____
Conditions of approval, if any, are attached. Approval of this notice does not warrant or certify that the applicant holds legal or equitable title to those rights in the subject lease which would entitle the applicant to conduct operations thereon.		Office _____

Title 18 U.S.C. Section 1001 and Title 43 U.S.C. Section 1212, make it a crime for any person knowingly and willfully to make to any department or agency of the United States any false, fictitious or fraudulent statements or representations as to any matter within its jurisdiction.

**\*\* OPERATOR-SUBMITTED \*\* OPERATOR-SUBMITTED \*\* OPERATOR-SUBMITTED \*\***

**Sundry Notice Request  
ConocoPhillips Company  
Red Hills West; Wolfcamp  
Golden Spur 36 COM W1 2H**

Eddy County, New Mexico

ConocoPhillips Company respectfully requests to amend the approved permit to pre-set the surface and intermediate casings. The reasons would be to improve time and cost savings.

**1. Spudder Rig and Skid Operations:**

Precision Drilling #822 Rig will be used to drill the surface hole and intermediate hole. BLM will be contacted / notified 24 hours prior to commencing spudder rig operations and expected to take 10-12 days for a duo pad.

Surface casing and intermediate casing will be preset on all the wells on the same pad. Both hole sections will be drilled, cased and cemented according to casing program based on the approved permit. All casing strings will be tested in accordance to the rules and regulations per Onshore Order.

The wellhead will be nipped up and tested as soon as 13-3/8" surface casing is cut off after the applicable WOC time has been reached. Prior to drilling out the 13-3/8" surface casing, ConocoPhillips shall nipple up a 3M BOPE & choke arrangement with 5M components and test to the rated working pressure of a 3M BOPE system as it is subjected to the maximum anticipated surface pressure 1,500 psi (0.33 psi/ft pressure gradient assuming fully evacuated) per Onshore Order 2. The pressure test to MASP and 50% for annular shall be performed with a test plug after installing the 13-5/8" casing head and nipping up the 3M BOPE system prior to drilling out the 13-3/8" surface casing.

A blind flange cap of the same pressure rating as the wellhead will be secured to seal the wellbore on all casing strings. Pressure will be monitored via flanged port tied to a needle valve and pressure gauge to monitor pressures on each wellhead section and a means for intervention will be maintained while the drilling rig is not over the well.

The drilling operation will re-commence with a big Drilling Rig (H&P Flex 3 rig type) and a BOP stack based on the approved permit will be nipped up and tested on the wellhead before drilling operations resumes on each well. The rig will skid between each well until each well's section has been drilled in this possible order:

1. **Move-in PD822 to Golden Spur 36 COM W1 1H**
2. **Drill and pre-set Surface & Intermediate Casing**
3. **Skid to Golden Spur 36 COM W1 2H**
4. **Drill and pre-set Surface & Intermediate Casing**
5. **Move-in H&P Flex 3 rig to Golden Spur 36 COM W1 1H**
6. **Drill, Set & Cement Intermediate2 Casing**
7. **Skid to Golden Spur 36 COM W2 2H**
8. **Drill, Set & Cement Intermediate2 Casing**
9. **Drill, Set & Cement Production Casing**
10. **Skid to Golden Spur 36 COM W2 2H**
11. **Drill, Set & Cement Production Casing**

Rig move in to drill will depend on rig availability and APD approval date. Once "Spudder Rigs" has performed pre-set surface and intermediate, the "Big Drilling Rig" shall return to each well to drill the remain sections per conditions of approval.

## 2. Pressure Control Equipment:

BOP installed and tested before drilling which hole?	Size?	Min. Required WP	Type	✓	Tested to:
12-1/4"	13-5/8"	3M	Annular	x	50% of working pressure
			Blind Ram		± 1,500 psi
			Pipe Ram		
			Double Ram	x	
			Other*		

\*Specify if additional ram is utilized.

BOP/BOPE will be tested by an independent service company to 250 psi low and the high pressure indicated above per Onshore Order 2 requirements. The System may be upgraded to a higher pressure but still tested to the working pressure listed in the table above. If the system is upgraded all the components installed will be functional and tested.

Pipe rams will be operationally checked each 24 hour period. Blind rams will be operationally checked on each trip out of the hole. These checks will be noted on the daily tour sheets. Other accessories to the BOP equipment will include a Kelly cock and floor safety valve (inside BOP) and choke lines and choke manifold. See attached schematics.

X	Formation integrity test will be performed per Onshore Order #2. On Exploratory wells or on that portion of any well approved for a 5M BOPE system or greater, a pressure integrity test of each casing shoe shall be performed. Will be tested in accordance with Onshore Oil and Gas Order #2 III.B.1.i.
X	A variance is requested for the use of a flexible choke line from the BOP to Choke Manifold. See attached for specs and hydrostatic test chart.
N	Are anchors required by manufacturer?
X	A multibowl wellhead is being used. The BOP will be tested per Onshore Order #2 after installation on the surface casing which will cover testing requirements for a maximum of 30 days. If any seal subject to test pressure is broken the system must be tested.  • Provide description here  See attached schematic.

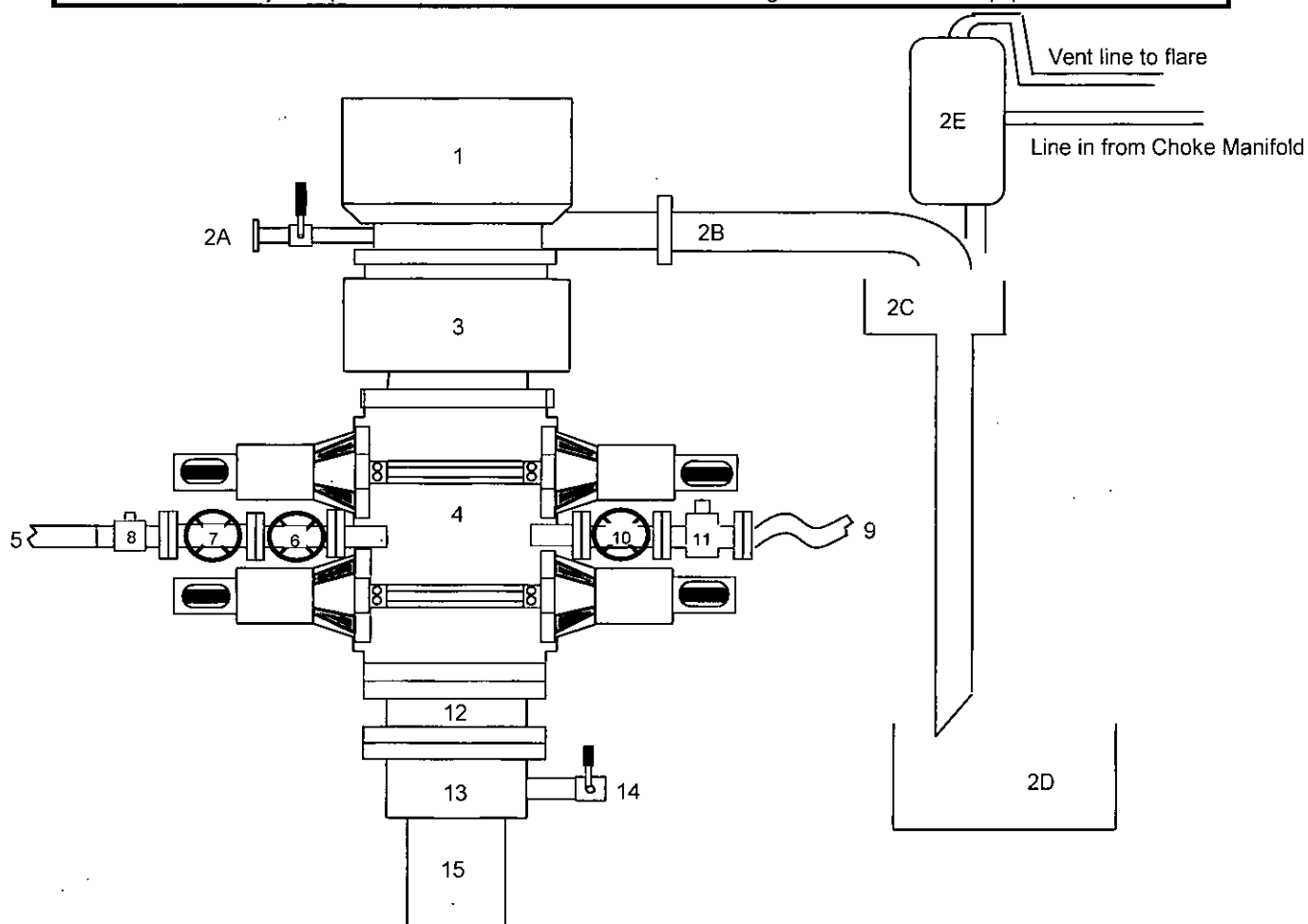
### Attachments:

- ✚ Attachment # 1 ..... BOP/BOPE and Choke Manifold Schematic
- ✚ Attachment # 2 ..... Coflex Choke Line Test Certificate
- ✚ Attachment # 3 ..... Spudder Rig Specifications/Layout

Sundry request proposed 6 October 2015 by:  
James Chen, P.E.  
Drilling Engineer | ConocoPhillips Permian Shale  
Office Phone: 281.206.5244  
Cell Phone: 832.768.1647

## BLOWOUT PREVENTER ARRANGEMENT

3M System per Onshore Oil and Gas Order No. 2 utilizing 3M and 5M Rated Equipment

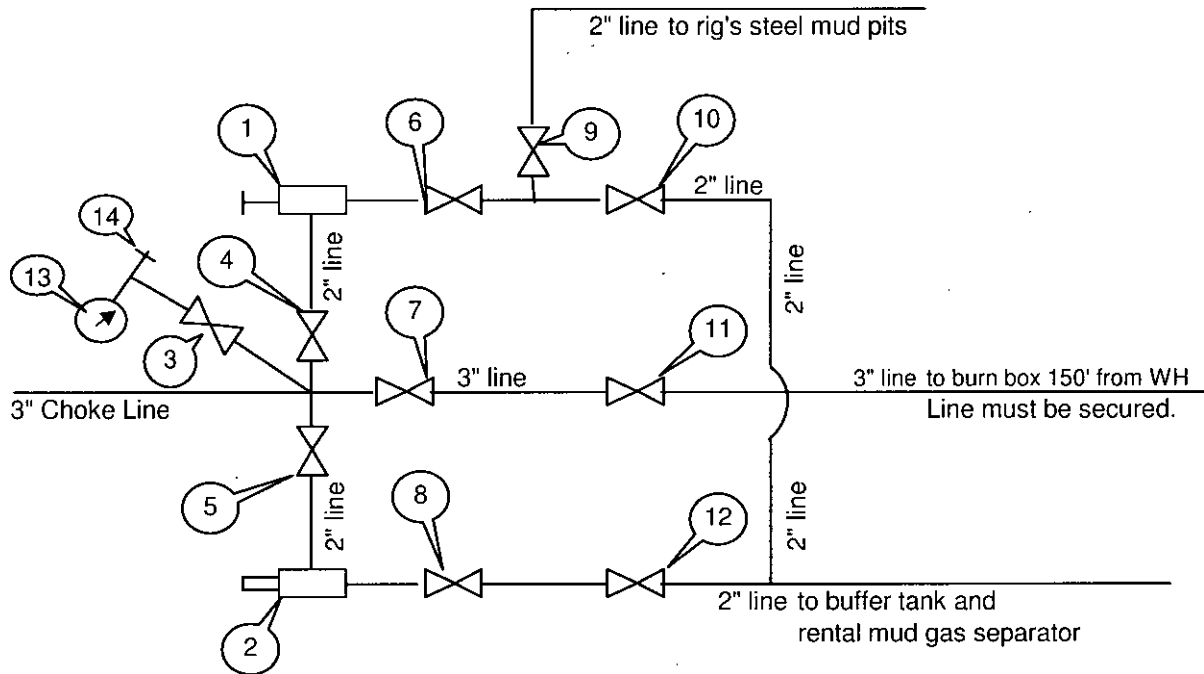


Item	Description
1	Rotating Head, 13-5/8"
2A	Fill up Line and Valve
2B	Flow Line (10")
2C	Shale Shakers and Solids Settling Tank
2D	Cuttings Bins for Zero Discharge
2E	Rental Mud Gas Separator with vent line to flare and return line to mud system
3	Annular BOP (13-5/8", 5M)
4	Double Ram (13-5/8", 5M, equipped with Blind Rams and Pipe Rams)
5	Kill Line (2" flexible hose, 3000 psi WP)
6	Kill Line Valve, Inner (3-1/8", 3000 psi WP)
7	Kill Line Valve, Outer (3-1/8", 3000 psi WP)
8	Kill Line Check Valve (2-1/16", 3000 psi WP)
9	Choke Line (5M Stainless Steel Coflex Line, 3-1/8" 3M API Type 6B, 3000 psi WP)
10	Choke Line Valve, Inner (3-1/8", 3000 psi WP)
11	Choke Line Valve, Outer, (Hydraulically operated, 3-1/8", 3000 psi WP)
12	Spacer Spool (13-5/8", 5M)
13	Casing Head (13-5/8" 5M)
14	Ball Valve and Threaded Nipple on Casing Head Outlet, 2" 5M
15	Surface Casing

James Chen, P.E.  
 Drilling Engineer | ConocoPhillips Permian Shale  
 Office Phone 281.206.5244  
 Cell Phone 832.768.1647

## CHOKE MANIFOLD ARRANGEMENT

3M System per Onshore Oil and Gas Order No. 2 utilizing 3M and 5M Equipment



Item	Description
1	Manual Adjustable Choke, 2-1/16", 3M
2	Remote Controlled Hydraulically Operated Adjustable Choke, 2-1/16", 3M
3	Gate Valve, 2-1/16" 5M
4	Gate Valve, 2-1/16" 5M
5	Gate Valve, 2-1/16" 5M
6	Gate Valve, 2-1/16" 5M
7	Gate Valve, 3-1/8" 3M
8	Gate Valve, 2-1/16" 5M
9	Gate Valve, 2-1/16" 5M
10	Gate Valve, 2-1/16" 5M
11	Gate Valve, 3-1/8" 3M
12	Gate Valve, 2-1/16" 5M
13	Pressure Gauge
14	2" hammer union tie-in point for BOP Tester

We will test each valve to 3000 psi from the upstream side.

Submitted by:

James Chen

Drilling Engineer, Mid-Continent Business Unit, ConocoPhillips Company

Date: 21-March-2013

**RELIANCE**

Industrial Products USA, Ltd.

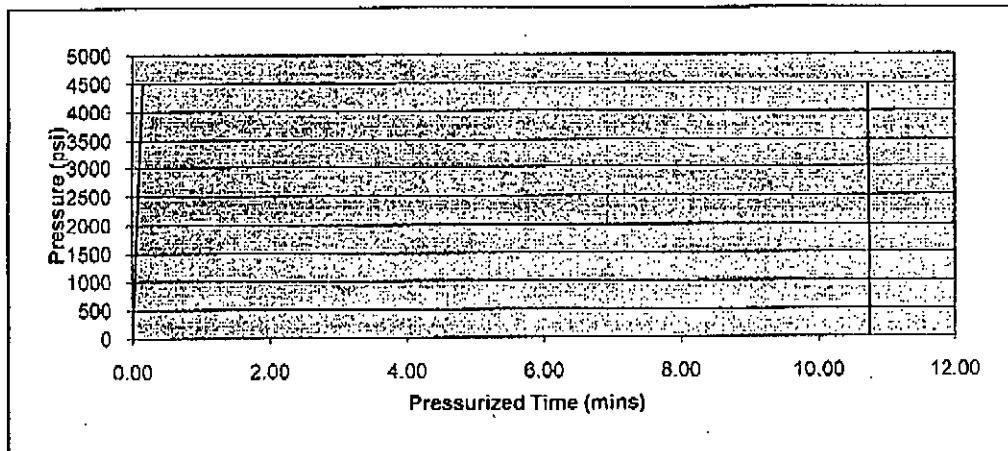
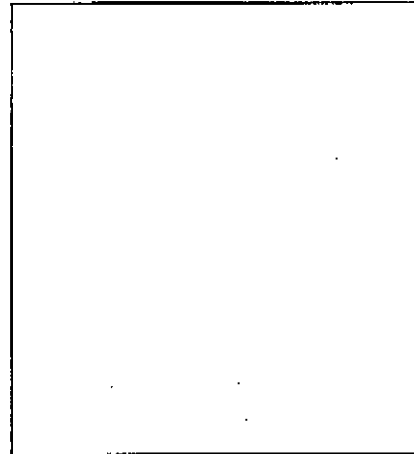
2030 E. 8th Street, Suite B • Greeley, CO 80631

Ph: (970) 346-3751 • Fax: (970) 353-3168 • Toll Free: (866) 771-9739

**T E S T   C E R T I F I C A T E**

Customer: PERCISION DRILLING  
P.O. #: 73011111  
Invoice #: 25279  
Material: 3 1/2" FIRE GUARD  
Description: 2" X 30'  
Coupling 1: FLOATING FLANGE  
" Serial:  
" Quality:  
Coupling 2: FLANGE  
" Serial:  
" Quality:  
Working Pressure : 3000  
Test Pressure: 4500  
Duration (mins): 10

Cert No.: 25279TO1  
Date: 6/29/2012



Conducted By: FLORES M.  
Test Technician

☒ Acceptable  
☐ Not Acceptable

## RIG 822SSE



## PRECISION DRILLING

DATE: 2015/10/05  
DWG No.: BOP-822-006  
DWG BY : CTJ



# Rig Inventory and Layout

**RIG 822SSE**

**Active**

Rig #	822	Rig Type	Super Single™ Electric
Superintendent	Johnny Ison	Operation Centre	Mid Continent
Category	Electric	Rig Type Code	SSE
Loads Winter (include boiler)	21	Class	Super Singles
Rated Vertical Depth (ft)	10000	Horse Power Range	1000 - 1200
Region	US Operations Group 1	Rig Locator Status	
Company	PDOS	Rig Phone Number	817-694-6797
		Plant Code	1505
Rated with Drill Pipe (in)	4 1/2		

## DRAWWORKS

Mechanical/Electric	VFD	Auxiliary Brake	N/A
Drawworks	Alta-Rig ARS-1201-AC	Rated Power (hp)	1200
Drawworks Capacity (lbs)	320000	Number of lines	8
Drawworks Drive (Quantity)	Baylor CM628TUT (AC) (1)	Rating (hp) - Each Motor	1230

## MAST

Mast Type	Single	Manufacturer	
Static Hook Load (lbs)	299000	Mast Clear Height (ft)	75'
Drill Line Size (in)	1	Number of lines	8
Drill Line SF=2 (lbs)	348300	Drill Line SF=3 (lbs)	232200

## SUBSTRUCTURE

Substructure Type	Trailer	Manufacturer	
Floor Height (ft)	10' 10" - 12' 6"	Kelly Bushing to Ground (ft)	
Clear Height (ft)	8' 6" - 10' 2"		
Rotary Capacity (lbs)	299000	Setback Capacity (lbs)	No Limitation

This Rig Type is Equipped with a Pipe Arm

## HOISTING AND ROTATING EQUIPMENT

Top Drive Model	Precision/Rostel PDCA50/70	Top Drive Capacity (tons)	150
Rotary Table Model	Slip Table	Rotary Table Capacity (lbs)	200000
		Rotary Table Clearance (in)	20-1/2
Power Wrench Model	W-N Apache 90-70	Maximum Diameter (in)	11-3/4



RIG 822SSE

## MUD PUMPS AND MUD SYSTEM

### MUD PUMP 1

Manufacturer & Model	BPMMP - BSF-1000 (Triplex)	Rated Power (hp)	1000
Stroke (in)	10		
Mud Pump Drive (Quantity)	Baylor CM628TUT (AC) (1)	Rating (hp) - Each Motor	1230

### MUD PUMP 2

Manufacturer & Model	BPMMP - BSF-1000 (Triplex)	Rated Power (hp)	1000
Stroke (in)	10		
Mud Pump Drive (Quantity)	Baylor CM628TUT (AC) (1)	Rating (hp) - Each Motor	1230

### MUD SYSTEM

Mud Tank Total Volume (bbl)	360	# of Mud Tanks	1
Premix Tank Volume (bbl)		Pill Tank Volume (bbl)	9.4
Trip Tank Volume (bbl)	15.7	Trip Tank Surface Area (ft <sup>2</sup> )	18.3
Centrifugal Pump Quantity:	2	Centrifugal Pump Size	5 x 6
Shale Shaker Quantity	1	Shale Shaker	Brandt King Cobra Linear Motion
Atmospheric Degasser	Single - 30 in OD 3 in Inlet 8 in Vent Line		
Additional Information			

### WELL CONTROL SYSTEM

Annular	Townsend Type-90	Pressure Rating (psi)	3000
		Size (in)	11
Rams			
Ram 1	Townsend T-82 - Single	Pressure Rating (psi)	3000
		Size (in)	11
Ram 2	Townsend T-82 - Single	Pressure Rating (psi)	3000
		Size (in)	11
Trim Type	Nace	BOP Additional Information	
Accumulator Manufacturer	E.C.S.	Remote Panel Type	Electric
Accumulator Volume (gal-US)	84	# of Stations:	5
Accumulator Pumps			
Choke Manifold Style (in)	2 x 3 x 2	Pressure Rating (psi)	3000

Well control equipment listed is rig's normal inventory. Well control equipment is subject to change; Operator should confirm current configuration and specific requirements with the Precision Drilling Contracts Representative.

RIG 822SSE

### ELECTRICAL POWER

Power Distribution Type 3 Diesel Electric Generators, each with Ross Hill 1402 Generator Bays powering 4 ABB ASC800 Drive Bays & Allen Bradley MCC

### POWER GENERATION

Power Generators					
Quantity	2	Generator Drive	CAT C-32	Generator Rating (kW)	810
Quantity	1	Generator Drive	CAT C-18	Generator Rating (kW)	545

### MISCELLANEOUS EQUIPMENT

Winterization	N/A	Boiler Rating (hp)	
Fuel Tank Qty	1	Total Fuel Tank Capacity (gal-US)	5200
Water Tank Qty	1	Total Water Tank Capacity (bbl)	375
Special Equipment	Hydraulic BOP Handler, Hydraulic Catheads, Hydraulic Catwalk, Hydraulic Pipe Arm, Power Tong, Substructure Leveling Jacks		

--	--

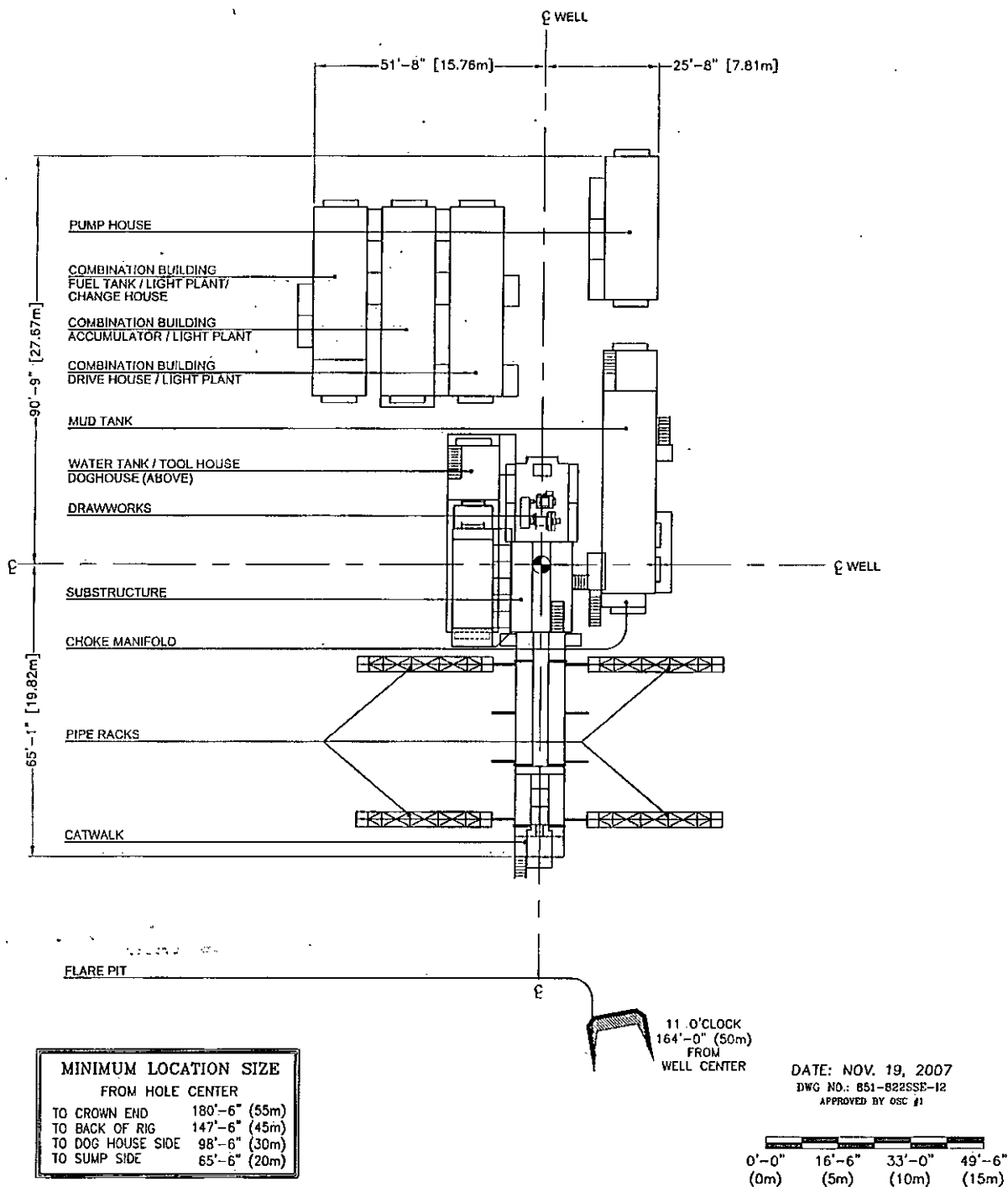
### NOTES

#### TUBULARS

As the selection of tubulars is dependant on the planned well program, specific requirements are to be discussed with the contracts representative of Precision Drilling. Exact quantities and descriptions of the selected tubulars are available upon request.

# RIG LAYOUT

# RIG 822SSE



**PRECISION DRILLING**

CALGARY, ALBERTA, CANADA