

**DISTRICT I**  
1625 N. French Dr., Hobbs, NM 88240  
Phone (575) 293-8181 Fax: (575) 293-8720

**DISTRICT II**  
811 S. First St., Artesia, NM 88210  
Phone (575) 748-1223 Fax: (575) 748-8720

**DISTRICT III**  
1000 Rio Brazos Rd., Aztec, NM 87410  
Phone (505) 234-8178 Fax: (505) 234-8170

**DISTRICT IV**  
1220 S. St. Francis Dr., Santa Fe, NM 87505  
Phone (505) 476-3480 Fax: (505) 476-3482

State of New Mexico  
Energy, Minerals and Natural Resources Department

Form C-102  
Revised August 1, 2011  
Submit one copy to appropriate  
District Office

**OIL CONSERVATION DIVISION**  
1220 South St. Francis Dr.  
Santa Fe, New Mexico 87505

WELL LOCATION AND ACREAGE DEDICATION PLAT

☒ AMENDED REPORT

API Number <b>30-015-39254</b>	Pool Code <b>97905</b>	Pool Name <b>WC G-07 S223021G; Bone Spring</b>
Property Code <b>306407</b>	Property Name <b>JAMES RANCH UNIT D11</b>	Well Number <b>126H</b>
OGRID No. <b>260737</b>	Operator Name <b>BOPCO, L.P.</b>	Elevation <b>3165'</b>

Surface Location

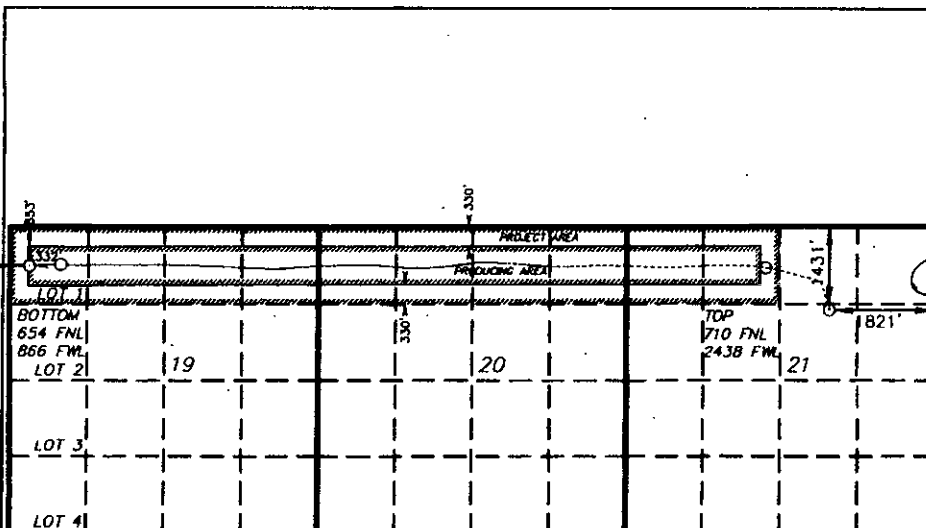
UL or lot No.	Section	Township	Range	Lot Idn	Feet from the	North/South line	Feet from the	East/West line	County
G	21	22 S	30 E		1431	NORTH	1821	EAST	EDDY

Bottom Hole Location If Different From Surface

UL or lot No.	Section	Township	Range	Lot Idn	Feet from the	North/South line	Feet from the	East/West line	County
D	19	22 S	30 E		653	NORTH	332	WEST	EDDY

Dedicated Acres	Joint or Infill	Consolidation Code	Order No.
400			

NO ALLOWABLE WILL BE ASSIGNED TO THIS COMPLETION UNTIL ALL INTERESTS HAVE BEEN CONSOLIDATED  
OR A NON-STANDARD UNIT HAS BEEN APPROVED BY THE DIVISION



**BOTTOM HOLE LOCATION**  
Lat - N 32°22'59.24"  
Long - W 103°55'41.22"  
NMSPC - N 503331.6  
E 625090.1  
(NAD-27)

**SURFACE LOCATION**  
Lat - N 32°22'51.20"  
Long - W 103°52'58.81"  
NMSPC - N 502574.8  
E 639020.1  
(NAD-27)

**OPERATOR CERTIFICATION**

I hereby certify that the information contained herein is true and complete to the best of my knowledge and belief, and that this organization either owns a working interest or unleased mineral interest in the land including the proposed bottom hole location or has a right to drill this well at this location pursuant to a contract with an owner of such a mineral or working interest, or to a voluntary pooling agreement or a compulsory pooling order heretofore entered by the division.

Signature *Tracie J Cherry* Date *08/03/12*

Printed Name  
**Tracie J Cherry**  
tjcherry@basspet.com

Email Address

**SURVEYOR CERTIFICATION**

I hereby certify that the well location shown on this plat was plotted from field notes of actual surveys made by me or under my supervision and that the same is true and correct to the best of my belief.

Date Surveyed *APRIL 10, 2012*  
Signature & Seal of Professional Surveyor *Gary L. Jones*  
W.C. Jones  
7977

Certificate No. **Gary L. Jones 7977**

**BASIN SURVEYS 28737**

1" = 3000'