

Submit 1 Copy To Appropriate District Office  
District I - (575) 393-6161  
1625 N. French Dr., Hobbs, NM 88240  
District II - (575) 748-1283  
811 S. First St., Artesia, NM 88210  
District III - (505) 334-6178  
1000 Rio Brazos Rd., Aztec, NM 87410  
District IV - (505) 476-3460  
1220 S. St. Francis Dr., Santa Fe, NM 87505

State of New Mexico  
Energy, Minerals and Natural Resources

Form C-103  
Revised July 18, 2013

OIL CONSERVATION DIVISION  
1220 South St. Francis Dr.  
Santa Fe, NM 87505

WELL API NO. 30-005-61886
5. Indicate Type of Lease STATE <input type="checkbox"/> FEE <input checked="" type="checkbox"/>
6. State Oil & Gas Lease No.
7. Lease Name or Unit Agreement Name Spool SU Com
8. Well Number 3
9. OGRID Number 025575
10. Pool name or Wildcat Pecos Slope, Abo

SUNDRY NOTICES AND REPORTS ON WELLS  
(DO NOT USE THIS FORM FOR PROPOSALS TO DRILL OR TO DEEPEN OR PLUG BACK TO A DIFFERENT RESERVOIR. USE "APPLICATION FOR PERMIT" (FORM C-101) FOR SUCH PROPOSALS.)

1. Type of Well: Oil Well ☐ Gas Well ☒ Other

2. Name of Operator  
Yates Petroleum Corporation

3. Address of Operator  
105 South Fourth Street, Artesia, NM 88210

4. Well Location  
Unit Letter 1 : 1980 feet from the South line and 660 feet from the East line  
Section 14 Township 7S Range 2SE NMPM Chaves County

11. Elevation (Show whether DR, RKB, RT, GR, etc.)  
3689'GR

12. Check Appropriate Box to Indicate Nature of Notice, Report or Other Data

NOTICE OF INTENTION TO:

PERFORM REMEDIAL WORK ☐ PLUG AND ABANDON ☒  
TEMPORARILY ABANDON ☐ CHANGE PLANS ☐  
PULL OR ALTER CASING ☐ MULTIPLE COMPL ☐  
DOWNHOLE COMMINGLE ☐  
CLOSED-LOOP SYSTEM ☐  
OTHER: ☐

SUBSEQUENT REPORT OF:

REMEDIAL WORK ☐ ALTERING CASING ☐  
COMMENCE DRILLING OPNS. ☐ P AND A ☐  
CASING/CEMENT JOB ☐  
OTHER: ☐

13. Describe proposed or completed operations. (Clearly state all pertinent details, and give pertinent dates, including estimated date of starting any proposed work). SEE RULE 19.15.7.14 NMAC. For Multiple Completions: Attach wellbore diagram of proposed completion or recompletion.

Yates Petroleum Corporation plans to plug and abandon this well as follows:

1. MIRU all safety equipment as needed. TOH with production equipment.
2. Set a CIBP at 3574'. Dump 50' Class "C" cement on top of CIBP. This will cover the top of the Abo.
3. Perforate at 1575'. Spot a 35 sx Class "C" cement plug from 1465'-1575'. This will cover the top of the Glorieta.
4. Perforate at 894'. Spot a 35 sx Class "C" cement plug from 794'-894'. This will cover the 10-3/4" casing shoe. WOC.
5. Tag TOC. Perforate at 490'. Spot a 35 sx Class "C" cement plug from 390'-490'. This will cover the top of the San Andres.
6. Perforate at 60'. Circulate 25 sx Class "C" cement from 60' up to surface.
7. Cut off wellhead, install dry hole marker and clean location.

Wellbore schematics attached

Approved for plugging of well bore only.  
Liability under bond is retained pending receipt  
of C-103 (Subsequent Report of Well Plugging)  
which may be found at OCD Web Page under  
Forms, [www.emnrd.state.nm.us/oed](http://www.emnrd.state.nm.us/oed).

Spud Date:

Rig Release Date:

Well Bore must be Plugged by 12/15/2016

I hereby certify that the information above is true and complete to the best of my knowledge and belief.

SIGNATURE Tina Huerta TITLE Regulatory Reporting Supervisor DATE December 11, 2015

Type or print name Tina Huerta E-mail address: tinah@yatespetroleum.com PHONE: 575-748-4168  
For State Use Only

APPROVED BY: [Signature] TITLE Dr. J. Spencer DATE 12/15/2015

Conditions of Approval (if any):

\* See Attached COA's

WELL NAME: Spool SU Com #3 FIELD: \_\_\_\_\_  
 LOCATION: 1980' FSL & 660' FEL Sec. 14-7S-25E  
 GL: 3,689.9' ZERO: \_\_\_\_\_ KB: \_\_\_\_\_  
 SPUD DATE: 04/14/1983 COMPLETION DATE: 05/11/1983  
 COMMENTS: API No.: 30-005-61886

# CASING PROGRAM

10-3/4" 40.5# J-55	844'
4-1/2" 9.5# J-55	4,124'

**After**

## TOPS

San Andres	440'
Glorieta	1,525'
Abo	3,543'

Perfs @ 60'. 25sx surface plug from 60' to surface.

14-3/4" Hole

Perfs @ 490'. 100' (35sx) cement plug from 390' - 490' covering the top of the San Andres.

Perfs @ 894'. 100' (35sx) cement plug from 794' - 894' covering the 10-3/4" casing shoe.

7-7/8" Hole

Perfs @ 1,575'. 110' (35sx) cement plug from 1,465' - 1,575' covering the top of the Glorieta.

10-3/4" 40/5# J-55 @ 844'. Cemented w/ 700 sx. Circulated.

TOC @ 1,790'

CIBP @ 3,574' w/ 50' of cement. This will cover the top of the Abo.

Abo Perfs: 3,674' - 3,935' (29)

Squeeze Perfs: 3,800' (2)

4-1/2" 9.5# J-55 @ 4,124'. Cemented w/ 400sx. Perforated @ 3,800 and squeezed w/ 435 sx. Ran 1,500' (300sx) of 1". TOC @ 1,790'.

Not to Scale  
09/29/2015  
SAA

TD: 4,200'  
PBD: 4,124'

WELL NAME: Spool SU Com #3 FIELD:

LOCATION: 1980' FSL & 660' FEL Sec. 14-7S-25E

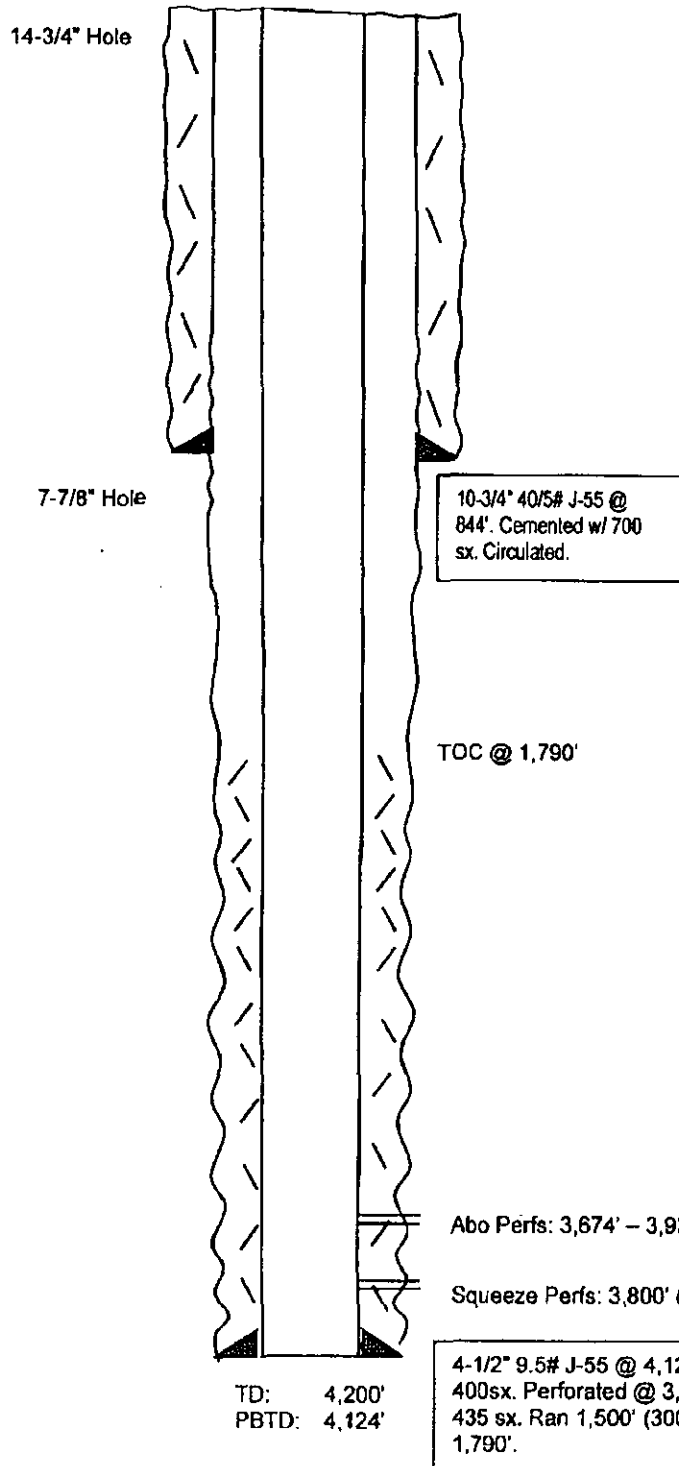
GL: 3,689.9' ZERO: KB:

SPUD DATE: 04/14/1983 COMPLETION DATE: 05/11/1983

COMMENTS: API No.: 30-005-61886

#### CASING PROGRAM

10-3/4" 40.5# J-55	844'
4-1/2" 9.5# J-55	4,124'



**Before**

#### TOPS

San Andres	440'
Glorieta	1,525'
Abo	3,543'

Not to Scale  
09/29/2015  
SAA

NEW MEXICO OIL CONSERVATION DIVISION  
DISTRICT 2 OFFICE  
811 S. FIRST STREET  
ARTESIA, NM 88210  
(575)748-1283

**CONDITIONS OF APPROVAL FOR PLUGGING & ABANDONMENT**

Operator: Yates  
Well Name & Number: 5P001 54 COM 3  
API #: 30-005-61886

1. Produced water will not be used during any part of the plugging & abandonment operation.
2. Notify NMOCD Dist. 2 office at least 24 hrs before beginning work.
3. Closed Loop System is to be used for entire plugging operation. Upon completion, contents of steel pit are to be hauled to a permitted disposal location.
4. Trucking companies being used to haul oilfield waste fluids to a disposal – commercial or private – shall have an approved NMOCD C-133 permit. A copy of this permit shall be available in each truck used to haul waste products. It is the responsibility of the operator, as well as the contractor, to verify that this permit is place prior to performing work. Drivers shall produce a copy upon request of NMOCD Field Inspectors.
5. A subsequent C-103 will serve as notification that the well bore has been plugged ONLY. A C-103 FINAL shall be filed before any bonding can be released on the well. Upon receipt of the Final, an inspection will be performed to verify that the location has been satisfactorily cleaned to NMOCD standards.
6. If work has not begun within 90 days of the approval of this procedure, an extension request must be filed, stating reason that well has not been plugged.
7. Every attempt must be made to clean the well bore out to below the perms, before any plugs can be set, by whatever means possible.
8. **Cement Retainers may not be used.**
9. Squeeze pressures are not to exceed 500 PSI, unless approval is given by NMOCD.
10. **Plugs may be combined after consulting with and getting approval from NMOCD.**
11. **Minimum WOC time for tag plugs will be 4 Hrs.**
12. 19.15.7.16 : B. In the case of a dry hole, a complete record of the well on form C-105 with the attachments listed in Subsection A of 19.15.7.16 NMAC shall accompany the notice of intention to plug the well, unless previously filed. The division shall not approve the plugging report or release the bond the operator has complied with 19.15.7.16 NMAC.

DATE: 12/15/15

APPROVED BY: AD

## GUIDELINES FOR PLUGGING AND ABANDONMENT

### DISTRICT II / ARTESIA

- All cement plugs will be a minimum of 100' in length or a minimum of 25 sacks of cement, whichever is greater.
- Mud laden fluids must be placed between all cement plugs.
- Mud laden fluids must be mixed at 25 sacks of gel per 100 bbls of water.
- A cement plug is required to be set 50' below and 50' above all casing shoes and casing stub plugs. These plugs must be tagged.
- A CIBP with 35' of cement on top may be set in lieu of 100' cement plug.
- A plug as indicated above must be placed within 100' of top perforation. This plug must be tagged.
- Plugs set below and above salt zones must be tagged.
- No more than 2000' is to be allowed between cement plugs in open hole and no more than 3000' in cased hole.
- DV tools are required to have a 100' cement plug set 50' above and below the tool and must be tagged.
- Formations to be isolated with plugs placed at the top of each formation are:
  - Fusselman
  - Devonian
  - Morrow
  - Wolfcamp
  - Bone Spring
  - Delaware
  - Any Salt Section (Plug at top and bottom)
  - Abo
  - Glorieta
  - Yates (this plug is usually at base of salt section)
- If cement does not exist behind casing strings at recommended formation depths, the casing must be cut and pulled with plugs set at these depths or casing must be perforated and cement squeezed behind casing at the formation depths.
- In the R-111-P area (Potash Mine area) a solid cement plug must be set across the salt section. Fluid used to mix the cement shall be saturated with the salts common to the section penetrated and in suitable proportions, but not more than a 3% calcium chloride by weight of cement will be considered the desired mixture whenever possible (50' below and 50' above).