

District I
1625 N. French Dr., Hobbs, NM 88240
Phone: (575) 393-6161 Fax: (575) 393-0720
District II
511 S. First St., Artesia, NM 88210
Phone: (575) 745-1283 Fax: (575) 745-9720
District III
1000 Rio Brazos Road, Aztec, NM 87410
Phone: (505) 334-6175 Fax: (505) 334-6170
District IV
1220 N. St. Francis Dr., Santa Fe, NM 87505
Phone: (505) 476-3460 Fax: (505) 476-3462

NM OIL CONSERVATION
ARTESIA DISTRICT
State of New Mexico
Energy, Minerals & Natural Resources Department
OIL CONSERVATION DIVISION
1220 South St. Francis Dr.
Santa Fe, NM 87505

Form C-102
Revised August 1, 2011
Submit one copy to appropriate
District Office

FEB 12 2016
RECEIVED
☒ AMENDED REPORT
Location change

WELL LOCATION AND ACREAGE DEDICATION PLAT

¹ API Number 30-015-40978	² Pool Code 51120	³ Pool Name Red Lake; Morieta-Yeso
⁴ Property Code 39636	⁵ Property Name BRAINARD 11P	
⁶ OGRID No. 277558	⁷ Operator Name LIME ROCK RESOURCES II-A, L.P.	
		⁸ Well Number 4
		⁹ Elevation 3304.4

*** Surface Location**

UL or lot no.	Section	Township	Range	Lot Idn	Feet from the	North/South line	Feet from the	East/West line	County
P	11	18 S	26 E		825	SOUTH	330	EAST	EDDY

" Bottom Hole Location If Different From Surface

UL or lot no.	Section	Township	Range	Lot Idn	Feet from the	North/South line	Feet from the	East/West line	County

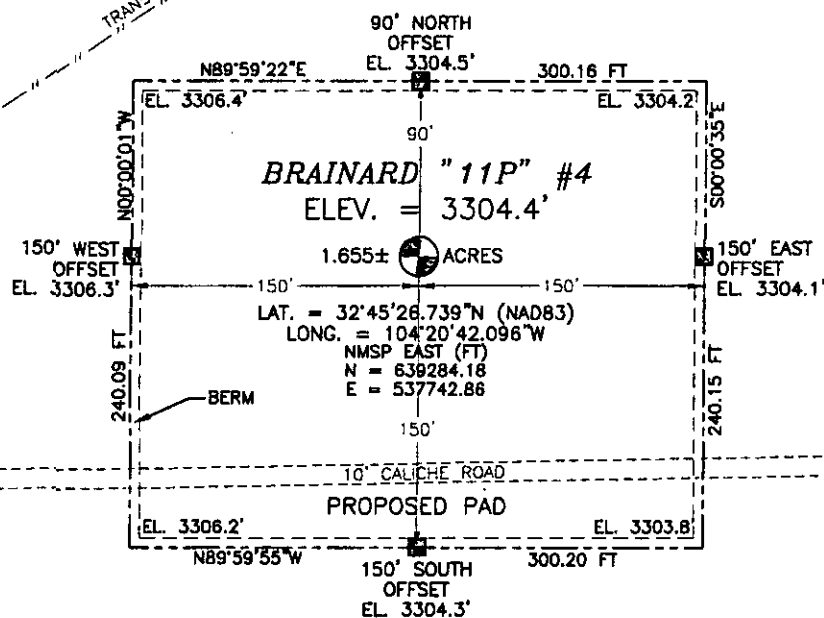
¹⁰ Dedicated Acres	¹¹ Joint or Infill	¹² Consolidation Code	¹³ Order No.

No allowable will be assigned to this completion until all interests have been consolidated or a non-standard unit has been approved by the division.

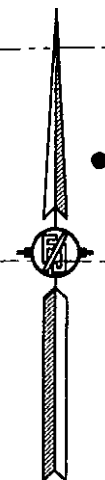
<p style="text-align: center;">S89°41'10"E 2653.24 FT S89°41'10"E 2653.24 FT</p> <div style="display: flex; justify-content: space-between;"> <div style="width: 45%;"> <p>NW CORNER SEC. 11 LAT. = 32°46'11.265"N LONG. = 104°21'39.864"W NMSP EAST (FT) N = 643784.86 E = 532811.07</p> <p>W/4 CORNER SEC. 11 LAT. = 32°45'44.975"N LONG. = 104°21'39.957"W NMSP EAST (FT) N = 641128.03 E = 532802.40</p> <p>SW CORNER SEC. 11 LAT. = 32°45'18.355"N LONG. = 104°21'40.045"W NMSP EAST (FT) N = 638488.38 E = 532794.24</p> </div> <div style="width: 10%; text-align: center;"> <p>N/4 CORNER SEC. 11 SCALED</p> <p>NOTE: LATITUDE AND LONGITUDE COORDINATES ARE SHOWN USING THE NORTH AMERICAN DATUM OF 1983 (NAD83). LISTED NEW MEXICO STATE PLANE EAST COORDINATES ARE GRID (NAD83). BASIS OF BEARING AND DISTANCES USED ARE NEW MEXICO STATE PLANE EAST COORDINATES MODIFIED TO THE SURFACE.</p> </div> <div style="width: 45%;"> <p>NE CORNER SEC. 11 LAT. = 32°46'10.987"N LONG. = 104°20'37.729"W NMSP EAST (FT) N = 643755.79 E = 538116.16</p> <p>E/4 CORNER SEC. 11 LAT. = LATITUDE N</p> <p style="text-align: center;">BRAINARD "11P" #4 ELEV. = 3304.4' LAT. = 32°45'26.739"N (NAD83) LONG. = 104°20'42.096"W NMSP EAST (FT) N = 639284.18 E = 537742.86</p> <p style="text-align: center;">SURFACE LOCATION 825'</p> <p>SE CORNER SEC. 11 LAT. = 32°45'18.558"N LONG. = 104°20'38.324"W NMSP EAST (FT) N = 638457.46 E = 538064.84</p> <p style="text-align: center;">S/4 CORNER SEC. 11 SCALED</p> </div> </div> <p style="text-align: center;">N89°39'50"W 2636.00 FT N89°39'50"W 2636.00 FT</p>	<p>" OPERATOR CERTIFICATION</p> <p>I hereby certify that the information contained herein is true and complete to the best of my knowledge and belief, and that this organization either owns a working interest or undivided mineral interest in the land including the proposed bottom hole location or has a right to drill this well at this location pursuant to a contract with an owner of such a mineral or working interest, or to a voluntary pooling agreement or a compulsory pooling order heretofore entered by the division.</p> <p><i>Mike Pippin</i> 2/11/16 Signature Date</p> <p>MIKE PIPPIN Printed Name</p> <p>MIKE@PIPPINLLC.COM E-mail Address</p> <p>" SURVEYOR CERTIFICATION</p> <p>I hereby certify that the well location shown on this plat was plotted from field notes of actual surveys made by me or under my supervision, and that the same is true and correct to the best of my belief.</p> <p style="text-align: center;">WILMON F. JARAMILLO FEBRUARY 4, 2016</p> <p>Date of Survey</p> <p><i>Wilmon F. Jaramillo</i> Signature and Seal of Professional Surveyor</p> <p>Certificate Number: WILMON F. JARAMILLO, PLS 12797 SURVEY NO. 1097B</p>
---	---

SECTION 11, TOWNSHIP 18 SOUTH, RANGE 26 EAST, N.M.P.M.
EDDY COUNTY, STATE OF NEW MEXICO
SITE MAP

NOTE: LATITUDE AND LONGITUDE COORDINATES ARE SHOWN USING THE NORTH AMERICAN DATUM OF 1983 (NAD83). LISTED NEW MEXICO STATE PLANE EAST COORDINATES ARE GRID (NAD83). BASIS OF BEARING AND DISTANCES USED ARE NEW MEXICO STATE PLANE EAST COORDINATES MODIFIED TO THE SURFACE.



SEC. 11
SEC. 12



EXISTING
ATOKA
SAN ANDRES
UNIT 23 INJ. WELL

010 50 100 200

SCALE 1" = 100'

DIRECTIONS TO LOCATION

FROM CR. #44 (FANNING) AND CR. #39 (4-DINKUS) AND CALICHE ROAD, GO EAST ON CALICHE ROAD 0.25 MILE, TURN LEFT AND GO NORTH 0.15 MILE AND GO WEST 340 FEET AND LOCATION IS ON RIGHT (NORTH) 105'

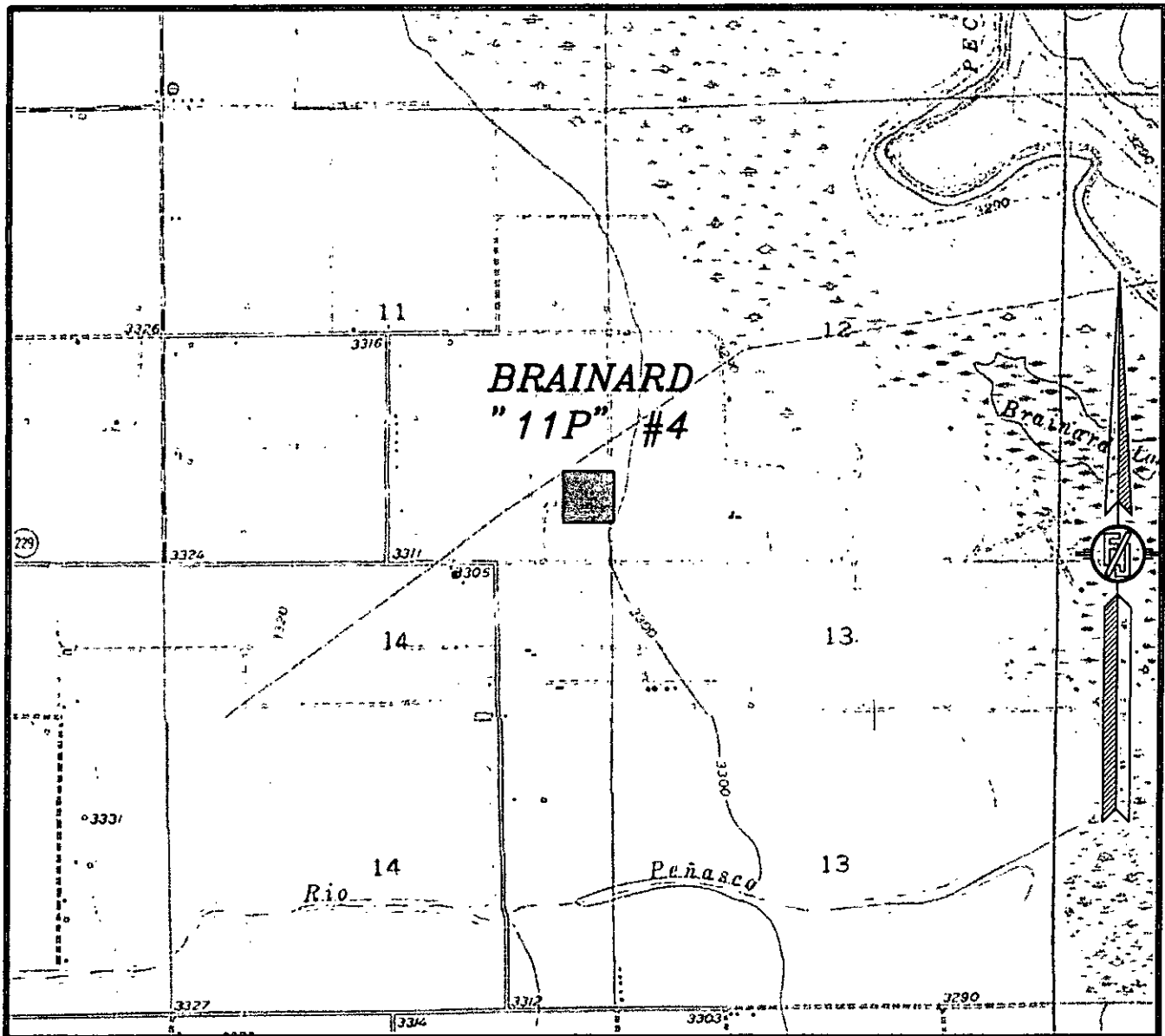
LIME ROCK RESOURCES II-A, L.P.
BRAINARD "11P" #4
LOCATED 825 FT. FROM THE SOUTH LINE
AND 330 FT. FROM THE EAST LINE OF
SECTION 11, TOWNSHIP 18 SOUTH,
RANGE 26 EAST, N.M.P.M.
EDDY COUNTY, STATE OF NEW MEXICO

FEBRUARY 4, 2016

SURVEY NO. 1097B

MADRON SURVEYING, INC. 301 SOUTH CANAL (575) 234-3341 CARLSBAD, NEW MEXICO

SECTION 11, TOWNSHIP 18 SOUTH, RANGE 26 EAST, N.M.P.M.
EDDY COUNTY, STATE OF NEW MEXICO
LOCATION VERIFICATION MAP



USGS QUAD MAP:
SPRING LAKE

NOT TO SCALE

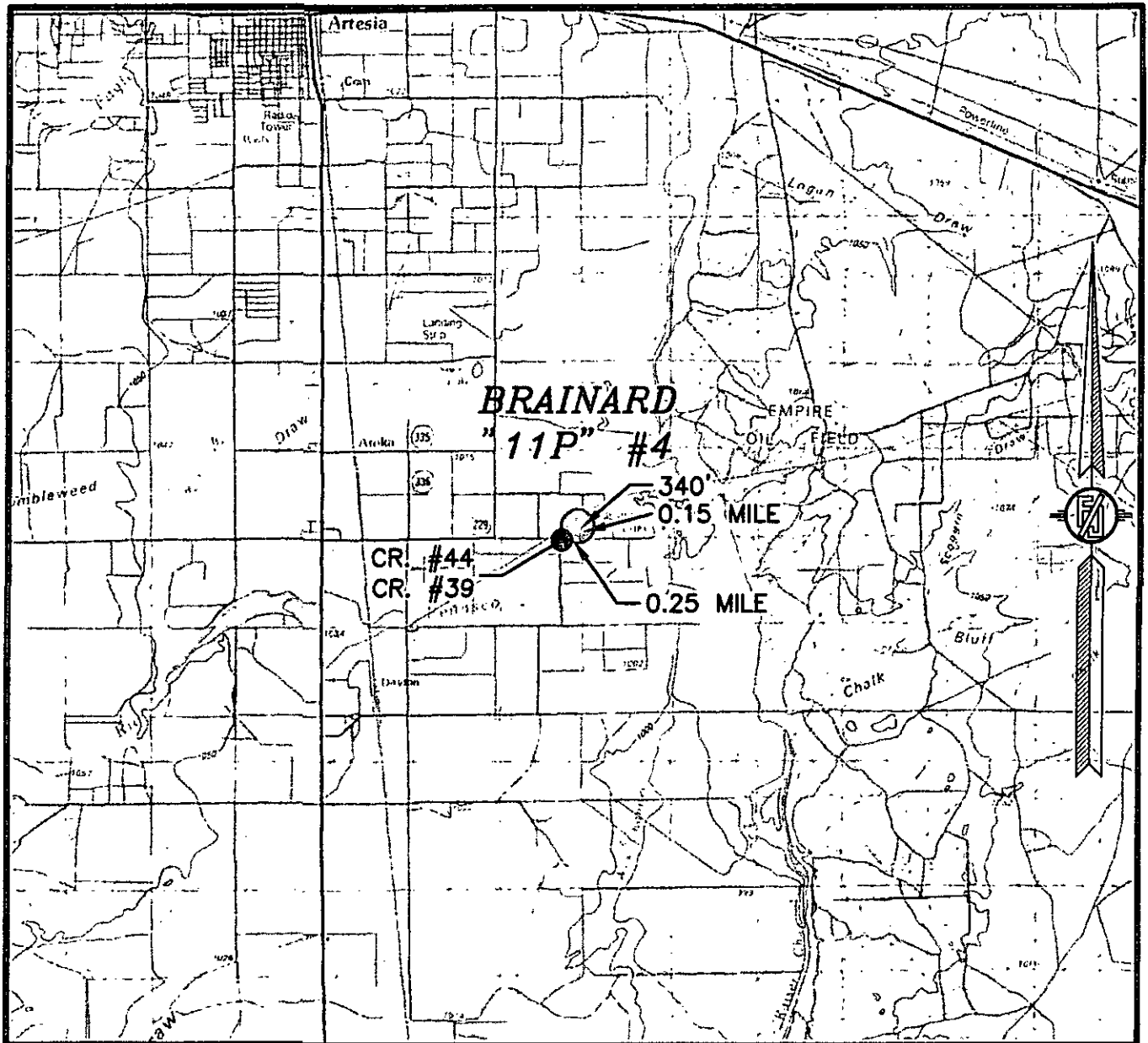
LIME ROCK RESOURCES II-A, L.P.
BRAINARD "11P" #4
LOCATED 825 FT. FROM THE SOUTH LINE
AND 330 FT. FROM THE EAST LINE OF
SECTION 11, TOWNSHIP 18 SOUTH,
RANGE 26 EAST, N.M.P.M.
EDDY COUNTY, STATE OF NEW MEXICO

FEBRUARY 4, 2016

MADRON SURVEYING, INC. 301 SOUTH CANAL (575) 234-3341 CARLSBAD, NEW MEXICO

SURVEY NO. 1097B

SECTION 11, TOWNSHIP 18 SOUTH, RANGE 26 EAST, N.M.P.M.
EDDY COUNTY, STATE OF NEW MEXICO
VICINITY MAP



DISTANCES IN MILES

NOT TO SCALE

DIRECTIONS TO LOCATION

FROM CR. #44 (FANNING) AND CR. #39 (4-DINKUS) AND CALICHE ROAD, GO EAST ON CALICHE ROAD 0.25 MILE, TURN LEFT AND GO NORTH 0.15 MILE AND GO WEST 340 FEET AND LOCATION IS ON RIGHT (NORTH) 105'

LIME ROCK RESOURCES II-A, L.P.

BRAINARD "11P" #4

LOCATED 825 FT. FROM THE SOUTH LINE
AND 330 FT. FROM THE EAST LINE OF
SECTION 11, TOWNSHIP 18 SOUTH,
RANGE 26 EAST, N.M.P.M.
EDDY COUNTY, STATE OF NEW MEXICO

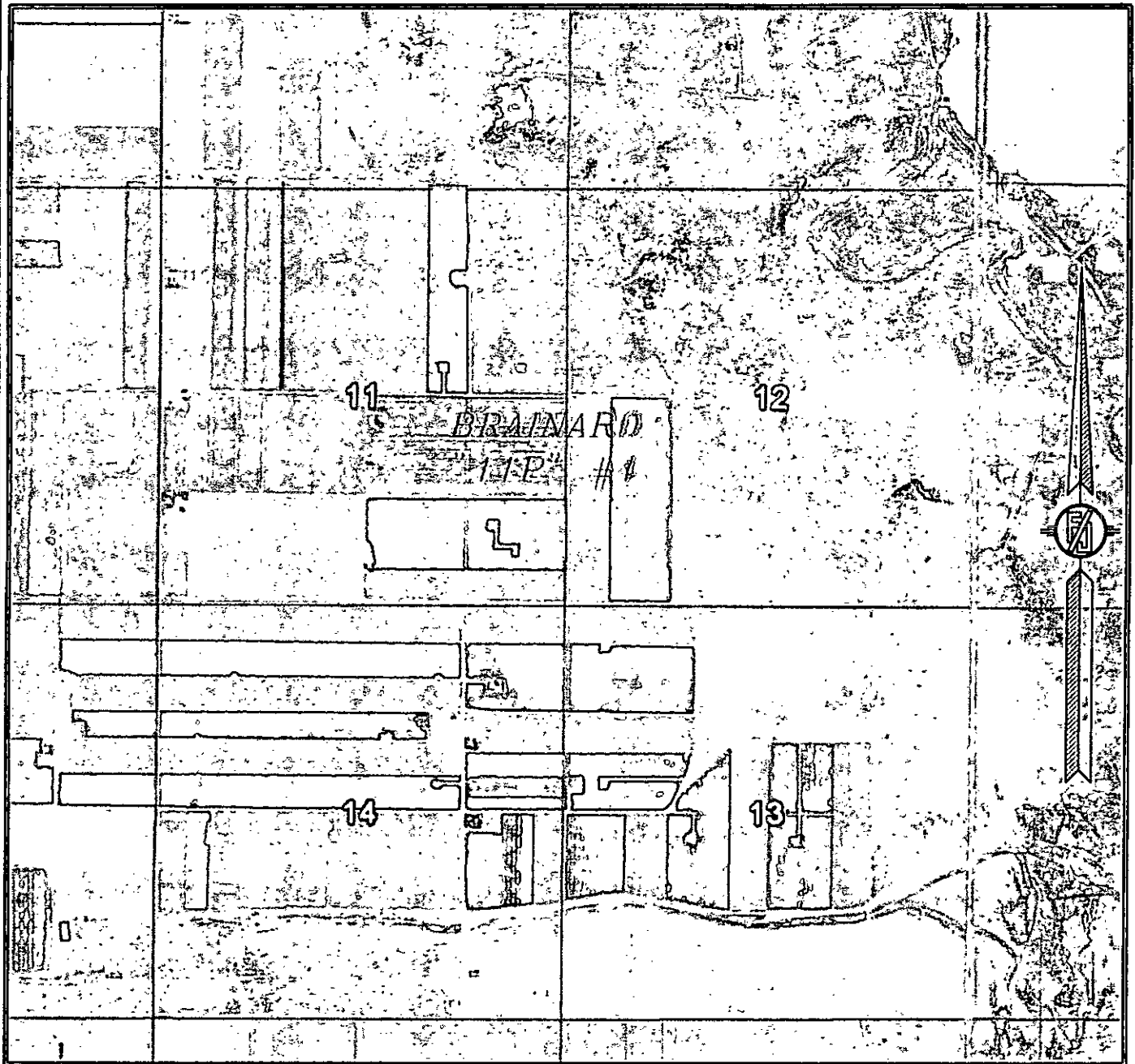
FEBRUARY 4, 2016

SURVEY NO. 1097B

MADRON SURVEYING, INC. 301 SOUTH CANAL
(505) 234-3341

CARLSBAD, NEW MEXICO

SECTION 11, TOWNSHIP 18 SOUTH, RANGE 26 EAST, N.M.P.M.
EDDY COUNTY, STATE OF NEW MEXICO
AERIAL PHOTO



NOT TO SCALE
AERIAL PHOTO:
GOOGLE EARTH
MAY 2014

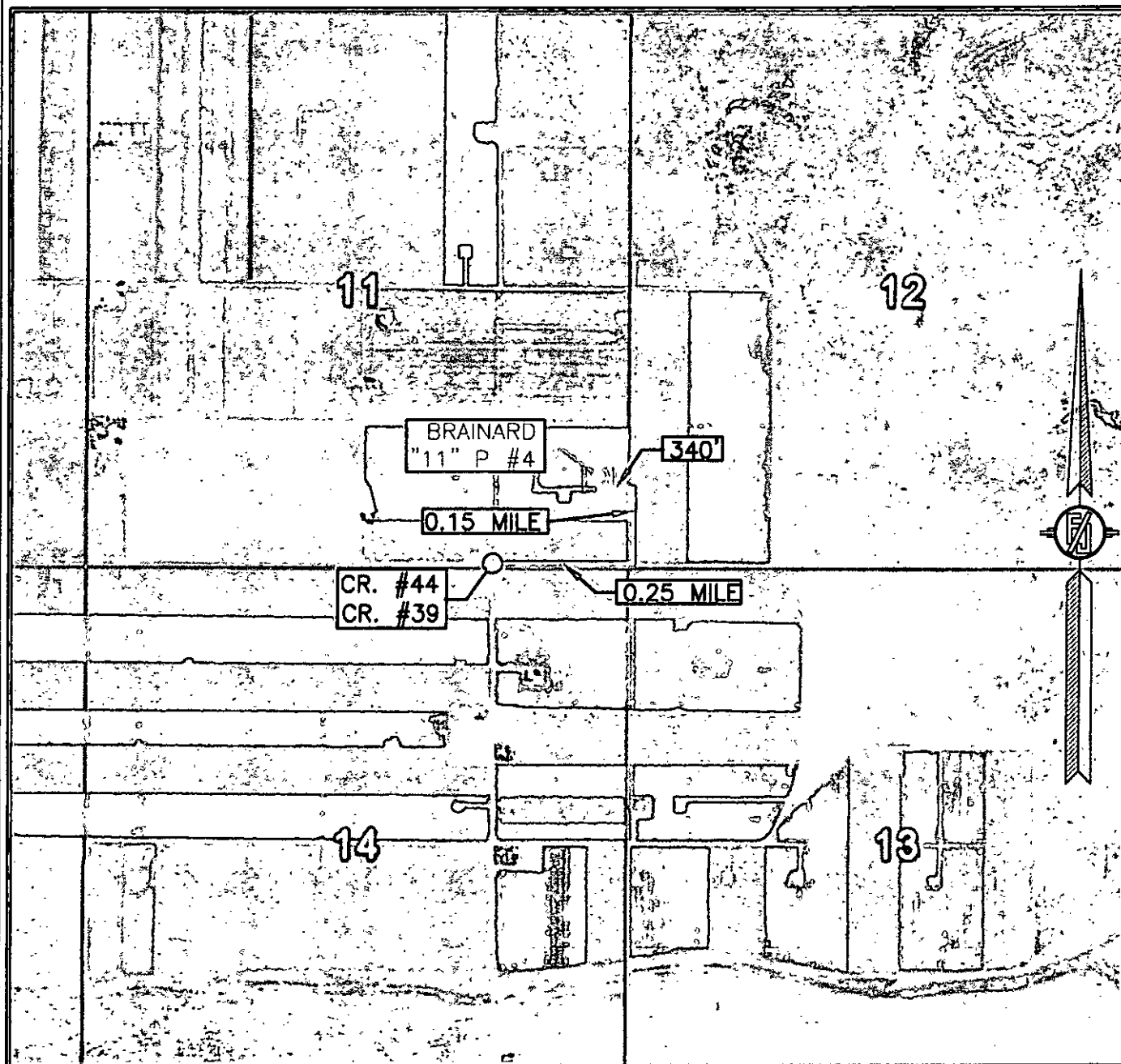
LIME ROCK RESOURCES II-A, L.P.
BRAINARD "11P" #4
LOCATED 825 FT. FROM THE SOUTH LINE
AND 330 FT. FROM THE EAST LINE OF
SECTION 11, TOWNSHIP 18 SOUTH,
RANGE 26 EAST, N.M.P.M.
EDDY COUNTY, STATE OF NEW MEXICO

FEBRUARY 4, 2016

SURVEY NO. 1097B

MADRON SURVEYING, INC. 301 SOUTH CANAL (575) 234-3341 CARLSBAD, NEW MEXICO

SECTION 11, TOWNSHIP 18 SOUTH, RANGE 26 EAST, N.M.P.M.
EDDY COUNTY, STATE OF NEW MEXICO
AERIAL ACCESS ROUTE MAP



NOT TO SCALE
AERIAL PHOTO:
GOOGLE EARTH
MAY 2014

LIME ROCK RESOURCES II-A, L.P.
BRAINARD "11P" #4
LOCATED 825 FT. FROM THE SOUTH LINE
AND 330 FT. FROM THE EAST LINE OF
SECTION 11, TOWNSHIP 18 SOUTH,
RANGE 26 EAST, N.M.P.M.
EDDY COUNTY, STATE OF NEW MEXICO

FEBRUARY 4, 2016

SURVEY NO. 1097B

MADRON SURVEYING, INC. 301 SOUTH CANAL (575) 234-3341 CARLSBAD, NEW MEXICO