

District I  
1625 N. French Dr., Hobbs, NM 88240  
District II  
1301 W. Grand Avenue, Artesia, NM 88210  
District III  
1000 Rio Brazos Rd., Aztec, NM 87410  
District IV  
1220 S. St. Francis Dr., Santa Fe, NM 87505

State of New Mexico  
Energy, Minerals & Natural Resources Department  
OIL CONSERVATION DIVISION  
1220 South St. Francis Dr.  
Santa Fe, NM 87505

NEW MEXICO OIL CONSERVATION DISTRICT  
FEB 29 2016  
RECEIVED

Form C-102  
Revised October 12, 2005  
Submit to Appropriate District Office  
State Lease - 4 Copies  
Fee Lease - 3 Copies

☒ AMENDED REPORT

### WELL LOCATION AND ACREAGE DEDICATION PLAT

API Number 30-015-40579		Pool Code 96831	Pool Name Cedar Lake; Glorieta - Yeso
Property Code 315935	Property Name Cedar Lake Federal C A		Well Number 115H
OGRID No. 873	Operator Name Apache Corporation: 303 Veterans Airpark Lane, Suite 1000 Midland, TX 79705		Elevation

### <sup>10</sup> Surface Location

UL or lot no.	Section	Township	Range	Lot Idn	Feet from the	North/South line	Feet from the	East/West line	County
									Eddy Co, NM

### <sup>11</sup> Bottom Hole Location If Different From Surface

UL or lot no.	Section	Township	Range	Lot Idn	Feet from the	North/South line	Feet from the	East/West line	County
Dedicated Acres	Joint or Infill	Consolidation Code	Order No. SEE ATTACHED - ORIGINAL C-102						

No allowable will be assigned to this completion until all interests have been consolidated or a non-standard unit has been approved by the division.

16					<b><sup>17</sup> OPERATOR CERTIFICATION</b>	
					I hereby certify that the information contained herein is true and complete to the best of my knowledge and belief, and that this organization either owns a working interest or unleased mineral interest in the land including the proposed bottom hole location or has a right to drill this well at this location pursuant to a contract with an owner of such a mineral or working interest, or to a voluntary pooling agreement or a compulsory pooling order heretofore entered by the Division.	
					Signature Emily Foltis	Date 02/16/2016
					<b><sup>18</sup> SURVEYOR CERTIFICATION</b>	
					I hereby certify that the well location shown on this plat was plotted from field notes of actual surveys made by me or under my supervision, and that the same is true and correct to the best of my belief.	
					Date of Survey Signature and Seal of Professional Surveyor:	
					Certificate Number	

DISTRICT I  
1625 N. French Dr., Hobbs, NM 88240  
Phone: (575) 393-6161 Fax: (575) 393-0720

DISTRICT II  
811 S. First St., Artesia, NM 88210  
Phone: (575) 748-1283 Fax: (575) 748-9720

DISTRICT III  
1000 Rio Brazos Road, Aztec, NM 87410  
Phone: (505) 334-6178 Fax: (505) 334-6170

DISTRICT IV  
1220 S. St. Francis Dr., Santa Fe, NM 87505  
Phone: (505) 476-3460 Fax: (505) 476-3462

State of New Mexico  
Energy, Minerals & Natural Resources Department  
OIL CONSERVATION DIVISION  
1220 South St. Francis Dr.  
Santa Fe, New Mexico 87505

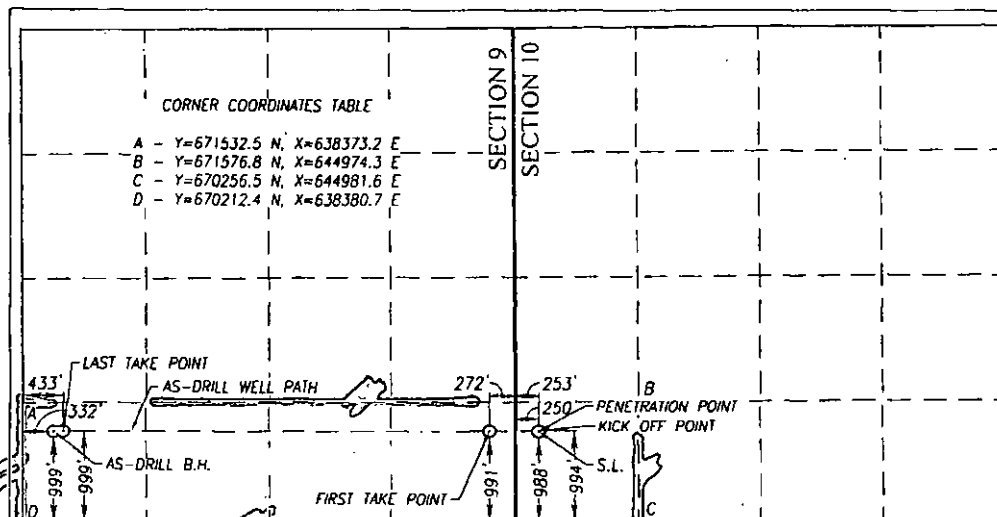
NM OIL CONSERVATION  
ARTESIA DISTRICT  
FEB 29 2016  
RECEIVED

Form C-102  
Revised August 1, 2011  
Submit one copy to appropriate  
District Office

AMENDED REPORT

WELL LOCATION AND ACREAGE DEDICATION PLAT

API Number 30-15-40579		Pool Code 26770		Pool Name FREN; GLORIETA-YESO					
Property Code 308711		Property Name CROW FEDERAL						Well Number 15H	
OGRID No. 873		Operator Name APACHE CORPORATION						Elevation 3885'	
Surface Location									
UL or lot No. M	Section 10	Township 17-S	Range 31-E	Lot Idn	Feet from the 988	North/South line SOUTH	Feet from the 250	East/West line WEST	County EDDY
As-Drill Bottom Hole Location If Different From Surface									
UL or lot No. M	Section 9	Township 17-S	Range 31-E	Lot Idn	Feet from the 999	North/South line SOUTH	Feet from the 332	East/West line WEST	County EDDY
Penetration Point Location									
UL or lot No. M	Section 10	Township 17-S	Range 31-E	Lot Idn	Feet from the 994	North/South line SOUTH	Feet from the 253	East/West line WEST	County EDDY
Dedicated Acres 200		Joint or Infill		Consolidation Code		Order No.			



OPERATOR CERTIFICATION

I hereby certify that the information herein is true and complete in the best of my knowledge and belief, and that this organization either owns a working interest or unleased mineral interest in the land including the proposed bottom hole location or has a right to drill this well at this location pursuant to a contract with an owner of such mineral or working interest, or to a voluntary pooling agreement or a compulsory pooling order heretofore entered by the division.

Signature: *Fatima Vasquez* Date: 01/14/2014

Printed Name: Fatima Vasquez

E-mail Address: Fatima.Vasquez@apachecorp.com

SURVEYOR CERTIFICATION

I hereby certify that the well location shown on this plat was plotted from field notes of actual surveys made by me or under my supervision, and that the same is true and correct to the best of my belief.

MARCH 27, 2012

Date of Survey  
Signature & Seal of Professional Surveyor:

RONALD J. EIDSON  
NEW MEXICO  
3239  
Certificate Number: Gary G. Eidson 12641  
Ronald J. Eidson 3239  
BKL. JWS-C W.O.: 13.13.1410

NOTE:

AS-DRILLED BOTTOM HOLE AND PENETRATION POINT PLOTTED FROM DATA FURNISHED BY (APACHE CORPORATION; PHOENIX FINAL SURVEY REPORT, JULY 16, 2013)