

UNITED STATES  
DEPARTMENT OF THE INTERIOR  
BUREAU OF LAND MANAGEMENT

OCD-ARTESIA

FORM APPROVED  
OMB NO. 1004-0135  
Expires: July 31, 2010**SUNDRY NOTICES AND REPORTS ON WELLS**  
*Do not use this form for proposals to drill or to re-enter an abandoned well. Use form 3160-3 (APD) for such proposals.*5. Lease Serial No.  
NMNM114965

6. If Indian, Allottee or Tribe Name

7. If Unit or CA/Agreement, Name and/or No.

**SUBMIT IN TRIPLICATE - Other instructions on reverse side.**

1. Type of Well

☒ Oil Well ☐ Gas Well ☐ Other

8. Well Name and No.

HORNED OWL FEDERAL 3H

2. Name of Operator

COG OPERATING LLC

Contact: ERIC CONKLIN

E-Mail: econklin@concho.com

9. API Well No.

30-015-42502-00-S1

3a. Address

600 W ILLINOIS AVENUE  
MIDLAND, TX 79701

3b. Phone No. (include area code)

Ph: 575-748-6938

10. Field and Pool, or Exploratory  
WILDCAT

4. Location of Well (Footage, Sec., T., R., M., or Survey Description)

Sec 25 T26S R26E NWNE 190FNL 1810FEL  
32.019883 N Lat, 104.243039 W Lon

11. County or Parish, and State

EDDY COUNTY, NM

**12. CHECK APPROPRIATE BOX(ES) TO INDICATE NATURE OF NOTICE, REPORT, OR OTHER DATA**

## TYPE OF SUBMISSION

## TYPE OF ACTION

☐ Notice of Intent☒ Subsequent Report☐ Final Abandonment Notice☐ Acidize☐ Alter Casing☐ Casing Repair☐ Change Plans☐ Convert to Injection☐ Deepen☐ Fracture Treat☐ New Construction☐ Plug and Abandon☐ Plug Back☐ Production (Start/Resume)☐ Reclamation☐ Recomplete☐ Temporarily Abandon☐ Water Disposal☐ Water Shut-Off☐ Well Integrity☒ Other  
Site Facility Diagram/  
Security Plan

13. Describe Proposed or Completed Operation (clearly state all pertinent details, including estimated starting date of any proposed work and approximate duration thereof. If the proposal is to deepen directionally or recompleat horizontally, give subsurface locations and measured and true vertical depths of all pertinent markers and zones. Attach the Bond under which the work will be performed or provide the Bond No. on file with BLM/BIA. Required subsequent reports shall be filed within 30 days following completion of the involved operations. If the operation results in a multiple completion or recompleat in a new interval, a Form 3160-4 shall be filed once testing has been completed. Final Abandonment Notices shall be filed only after all requirements, including reclamation, have been completed, and the operator has determined that the site is ready for final inspection.)

Updated- Site Facility Diagram

Accepted for Record Purposes.

Approval Subject to Onsite Inspection.

Date: 2/9/16

NM OIL CONSERVATION

ARTESIA DISTRICT

FEB 29 2016

Accepted for record  
NMOC

RECEIVED

14. I hereby certify that the foregoing is true and correct.

Electronic Submission #324534 verified by the BLM Well Information System

For COG OPERATING LLC, sent to the Carlsbad

Committed to AFMSS for processing by JAMIE RHOADES on 12/09/2015 (16JLR0094SE)

Name (Printed/Typed) ERIC CONKLIN

Title PERMITTING TECH

Signature (Electronic Submission)

Date 11/24/2015

**THIS SPACE FOR FEDERAL OR STATE OFFICE USE**

Approved By

Title

Date

Conditions of approval, if any, are attached. Approval of this notice does not warrant or certify that the applicant holds legal or equitable title to those rights in the subject lease which would entitle the applicant to conduct operations thereon.

Office

Title 18 U.S.C. Section 1001 and Title 43 U.S.C. Section 1212, make it a crime for any person knowingly and willfully to make to any department or agency of the United States any false, fictitious or fraudulent statements or representations as to any matter within its jurisdiction.

**\*\* BLM REVISED \*\* BLM REVISED \*\* BLM REVISED \*\* BLM REVISED \*\* BLM REVISED \*\***

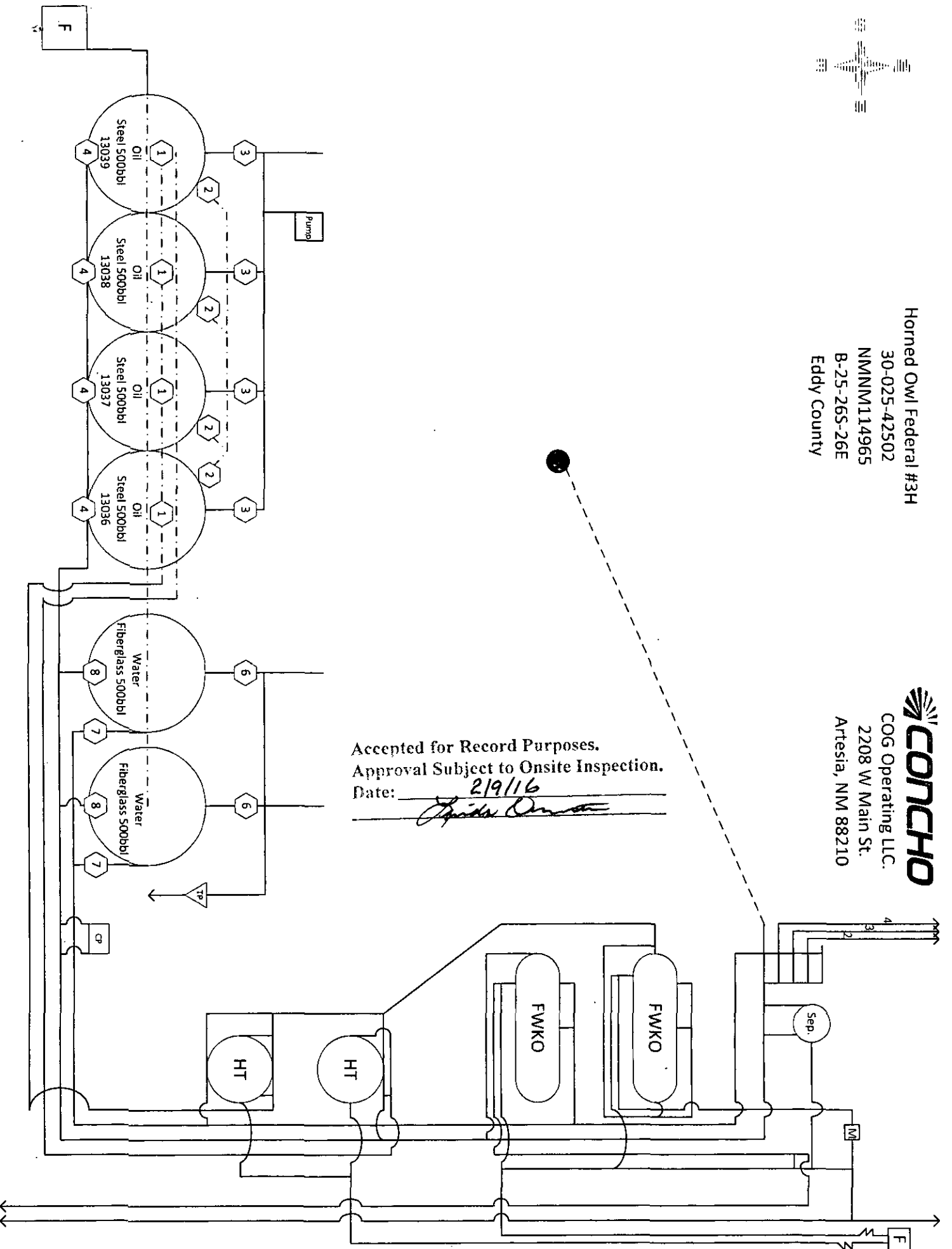


Horned Owl Federal #3H  
30-025-42502  
NMMNM114965  
B-25-26S-26E  
Eddy County

**CONCHO**  
COG Operating LLC.  
2208 W Main St.  
Artesia, NM 88210

Accepted for Record Purposes.  
Approval Subject to Onsite Inspection.  
Date: 2/9/16

*[Signature]*



Horned Owl Federal #3H  
30-025-42502  
NMNM114965  
B-25-26S-26E  
Eddy County

**Production Phase (OT#1)**

- A. Valves #1,#2,#4,#7, and #8 Open
- B. Valve #3 Closed and Sealed
- C. Valve #6 Closed
- D. Valves on OT #2, and #3 Positioned:
  - 1. Valves #1, #3, & #4 Closed and sealed

**II. Sales Phase (OT#1)**

- A. Valves #1, #2 and #4 Closed and Sealed
- B. Valve #3 on OT #1 Open
- C. Valves on OT #2, and #3 Positioned:
  - 1. Valve #1, and #2, Open
  - 2. Valve #3 Closed and Sealed

**Production Phase (OT #2)**

- A. Valves #1, #2, #4, #7, and #8 Open
- B. Valve #3 Closed and Sealed
- C. Valve #6 Closed
- D. Valves on OT #1, and #3 Positioned:
  - 1. Valves #1, #3 & #4 Closed and Sealed

**Sales Phase (OT#2)**

- A. Valves #1, #2 and #4 Closed and Sealed
- B. Valve #3 on OT #2 Open
- C. Valves on OT #1, and #3 Positioned:
  - 1. Valve #1, and #2 Open
  - 2. Valve #3 Closed and Sealed

**Production Phase (OT #3)**

- A. Valves #1,#2,#4,#7, & #8 Open
- B. Valve #3 Closed and Sealed
- C. Valve #6 Closed
- D. Valves on OT #1, and #2, Positioned:
  - 1. Valves #1, #3 & #4 Closed and Sealed

**Sales Phase (OT#3)**

- A. Valves #1, #2 and #4 Closed and Sealed
- B. Valve #3 on OT #3 Open
- C. Valves on OT #1, and #2 Positioned:
  - 1 Valve #1, and #2 Open
  - 2. Valve #3 Closed and Sealed

**Production Phase (OT #4)**

- A. Valves #1,#2,#4,#7, & #8 Open
- B. Valve #3 Closed and Sealed
- C. Valve #6 Closed
- D. Valves on OT #1, #2, and #3 Positioned:
  - 1. Valves #1, #3 & #4 Closed and Sealed

**Sales Phase (OT#4)**

- A. Valves #1, #2 and #4 Closed and Sealed
- B. Valve #3 on OT #4 Open
- C. Valves on OT #1, #2, and #3 Positioned:
  - 1 Valve #1, and #2 Open
  - 2. Valve #3 Closed and Sealed