

District I
1625 N. French Dr., Hobbs, NM 88240
Phone: (575) 393-6161 Fax: (575) 393-0726
District II
811 S. First St., Artesia, NM 88210
Phone: (575) 748-1283 Fax: (575) 748-9720
District III
1000 Rio Brazos Road, Aztec, NM 87410
Phone: (505) 334-6178 Fax: (505) 334-6170
District IV
1220 S. St. Francis Dr., Santa Fe, NM 87505
Phone: (505) 476-3460 Fax: (505) 476-3462

State of New Mexico
Energy, Minerals & Natural Resources Department
OIL CONSERVATION DIVISION
1220 South St. Francis Dr.
Santa Fe, NM 87505

Form C-102
Revised August 1, 2011
Submit one copy to appropriate
District Office

☒ AMENDED REPORT

WELL LOCATION AND ACREAGE DEDICATION PLAT

¹ API Number 30-015-41534	² Pool Code 96641	³ Pool Name Paduca; Bone Spring (O)
⁴ Property Code 300635	⁵ Property Name COTTON DRAW UNIT	⁶ Well Number 215H
⁷ OGRID No. 6137	⁸ Operator Name DEVON ENERGY PRODUCTION COMPANY, L.P.	⁹ Elevation 3507.5

¹⁰ Surface Location

UL or lot no.	Section	Township	Range	Lot Ida	Feet from the	North/South line	Feet from the	East/West line	County
C	36	24 S	31 E		200	NORTH	1760	WEST	EDDY

¹¹ Bottom Hole Location If Different From Surface

UL or lot no.	Section	Township	Range	Lot Ida	Feet from the	North/South line	Feet from the	East/West line	County
N	36	24 S	31 E		330	SOUTH	1980	WEST	EDDY

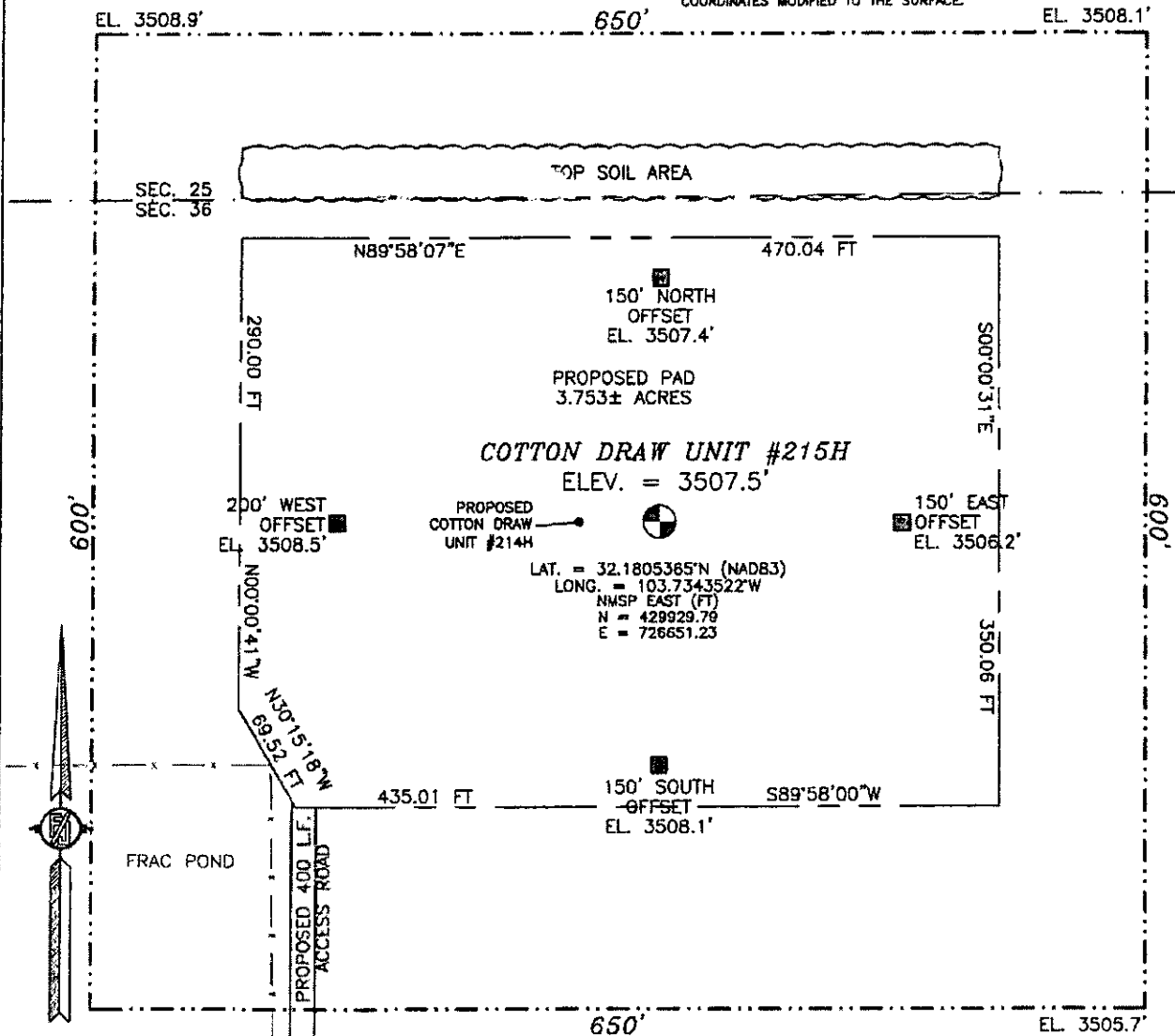
¹² Dedicated Acres 160	¹³ Joint or Infill	¹⁴ Consolidation Code	¹⁵ Order No.
--------------------------------------	-------------------------------	----------------------------------	-------------------------

No allowable will be assigned to this completion until all interests have been consolidated or a non-standard unit has been approved by the division.

<p>N89°39'31"E 2641.29 FT</p> <p>1760'</p> <p>200'</p> <p>SW CORNER SEC. 36 LAT. = 32.1810843°N LONG. = 103.7400380°W</p> <p>NMSP EAST (FT) N = 430119.30 E = 724891.03</p> <p>W/4 CORNER SEC. 36 LAT. = 32.1738255°N LONG. = 103.7400604°W</p> <p>NMSP EAST (FT) N = 427478.61 E = 724898.64</p> <p>SW CORNER SEC. 36 LAT. = 32.1666604°N LONG. = 103.7400852°W</p> <p>NMSP EAST (FT) N = 424872.03 E = 724905.34</p> <p>1980'</p> <p>N89°59'58"W 2650.11 FT</p>		<p>N89°39'22"E 2641.18 FT</p> <p>SURFACE LOCATION</p> <p>N/4 CORNER SEC. 36 LAT. = 32.1810872°N LONG. = 103.7315028°W</p> <p>NMSP EAST (FT) N = 430135.04 E = 727531.69</p> <p>NE CORNER SEC. 36 LAT. = 32.1810898°N LONG. = 103.7229679°W</p> <p>NMSP EAST (FT) N = 430150.88 E = 730172.25</p> <p>E/4 CORNER SEC. 36 LAT. = 32.1738293°N LONG. = 103.7229618°W</p> <p>NMSP EAST (FT) N = 427509.60 E = 730189.13</p> <p>SE CORNER SEC. 36 LAT. = 32.1665815°N LONG. = 103.7229565°W</p> <p>NMSP EAST (FT) N = 424872.96 E = 730205.72</p> <p>589°58'45"W 2651.42 FT</p>		<p>¹⁷ OPERATOR CERTIFICATION</p> <p>I hereby certify that the information contained herein is true and complete to the best of my knowledge and belief, and that this organization either owns a working interest or undivided mineral interest in the land including the proposed bottom hole location or has a right to drill this well in this location pursuant to a contract with an owner of such a mineral or working interest, or to a voluntary pooling agreement or a compulsory pooling order heretofore entered by the division.</p> <p><i>Linda Good</i> 3/8/2016 Signature Date</p> <p>Linda Good Printed Name</p> <p>linda.good@dvn.com E-mail Address</p>
<p>NOTE: LATITUDE AND LONGITUDE COORDINATES ARE SHOWN USING THE NORTH AMERICAN DATUM OF 1983 (NAD83). LISTED NEW MEXICO STATE PLANE EAST COORDINATES ARE GRID (NAD83). BASIS OF BEARING AND DISTANCES USED ARE NEW MEXICO STATE PLANE EAST COORDINATES MODIFIED TO THE SURFACE.</p> <p>BOTTOM OF HOLE LAT. = 32.1675235°N LONG. = 103.7336873°W</p> <p>NMSP EAST (FT) N = 425196.99 E = 726883.32</p> <p>S/4 CORNER SEC. 36 LAT. = 32.1666199°N LONG. = 103.7315230°W</p> <p>NMSP EAST (FT) N = 424872.00 E = 727554.88</p>		<p>¹⁸ SURVEYOR CERTIFICATION</p> <p>I hereby certify that the well location shown on this plat was plotted from field notes of actual surveys made by me or under my supervision, and that the same is true and correct to the best of my belief.</p> <p>JUNE 1, 2013 Date of Survey</p> <p><i>[Signature]</i> Signature and Seal of Professional Surveyor</p> <p>Certificate Number FIELDER P. JARAMILLO, PLS 12797 SURVEY NO. 1887</p>		

SECTION 36, TOWNSHIP 24 SOUTH, RANGE 31 EAST, N.M.P.M.
EDDY COUNTY, STATE OF NEW MEXICO
SITE MAP

NOTE: LATITUDE AND LONGITUDE COORDINATES ARE SHOWN USING THE NORTH AMERICAN DATUM OF 1983 (NAD83), LISTED NEW MEXICO STATE PLANE EAST COORDINATES ARE GRID (NAD83), BASIS OF BEARING AND DISTANCES USED ARE NEW MEXICO STATE PLANE EAST COORDINATES MODIFIED TO THE SURFACE.



010 50 100 200

SCALE 1" = 100'

DIRECTIONS TO LOCATION

FROM INTERSECTION OF ORLA HWY #1 & MONSANTO ROAD GO WEST ON MONSANTO ROAD APPROX. 2.1 MILES ROAD TURNS RIGHT (NORTH) GO NORTH APPROX. 0.9 MILES ROAD TURNS LEFT (WEST) GO WEST APPROX. 2.0 MILES ROAD TURNS RIGHT (NORTH) GO NORTH APPROX. 1.8 MILES ROAD TURNS LEFT (WEST) GO WEST APPROX. 0.3 MILES ROAD TURNS RIGHT (NORTH) GO NORTH 0.4 MILES CROSS CATTLE GUARD TURN RIGHT (EAST) GO EAST APPROX. 0.7 MILES ROAD TURNS LEFT (NORTH) GO NORTH APPROX. 0.9 MILES ROAD TURNS LEFT (WEST) GO WEST APPROX. 0.1 MILES EAST SIDE OF FRAC POND A ROAD LATH WITH RED AND WHITE FLAGGING LOCATION IS NORTH OF ROAD 400± FEET.

DEVON ENERGY PRODUCTION COMPANY, L.P.
COTTON DRAW UNIT #215H

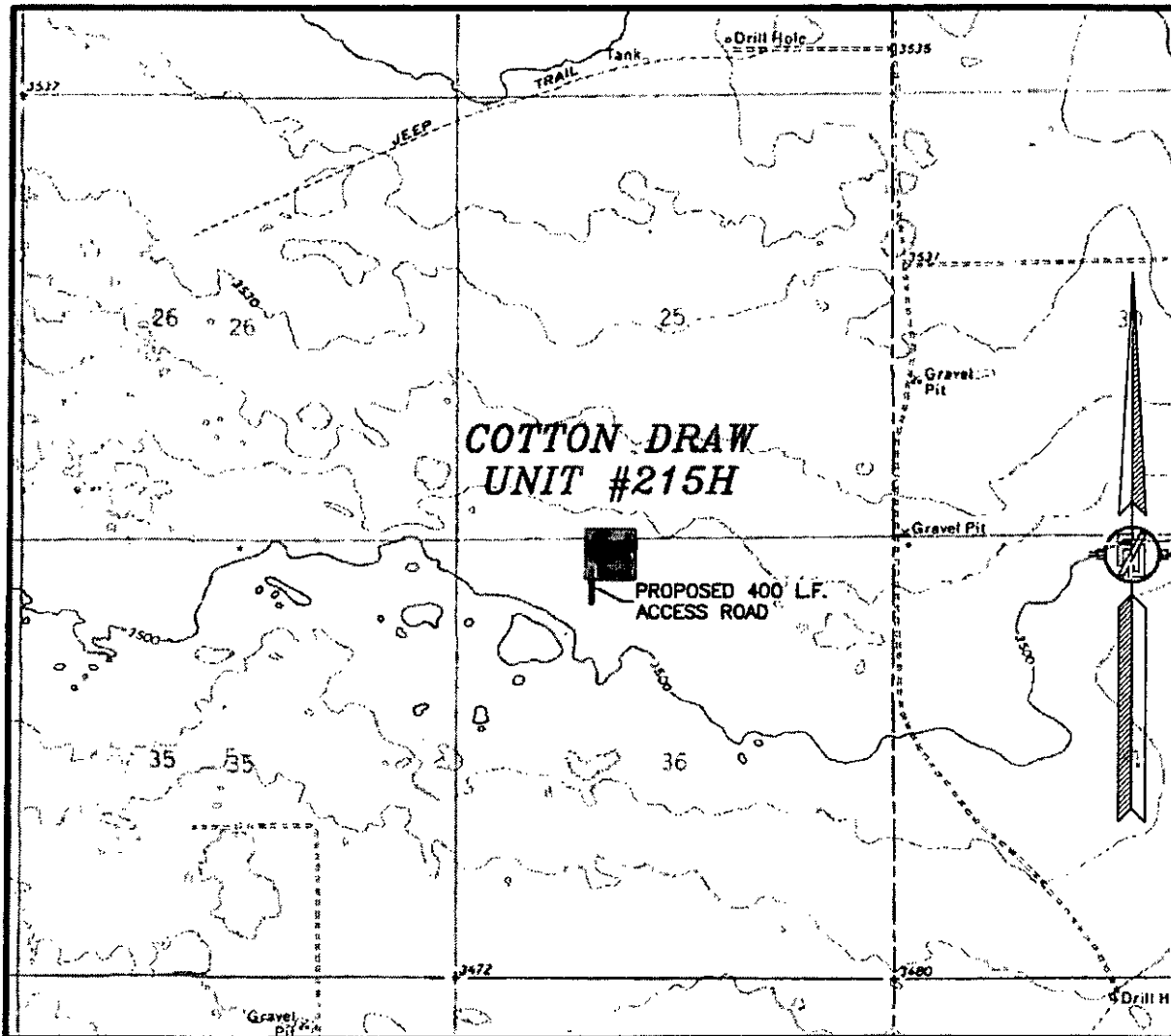
LOCATED 200 FT. FROM THE NORTH LINE
AND 1760 FT. FROM THE WEST LINE OF
SECTION 36, TOWNSHIP 24 SOUTH,
RANGE 31 EAST, N.M.P.M.
EDDY COUNTY, STATE OF NEW MEXICO

JUNE 1, 2013

SURVEY NO. 1887

MADRON SURVEYING, INC. 301 SOUTH CANAL (575) 234-3341 CARLSBAD, NEW MEXICO

SECTION 36, TOWNSHIP 24 SOUTH, RANGE 31 EAST, N.M.P.M.
EDDY COUNTY, STATE OF NEW MEXICO
LOCATION VERIFICATION MAP



USGS QUAD MAP:
PADUCA BREAKS NW

NOT TO SCALE

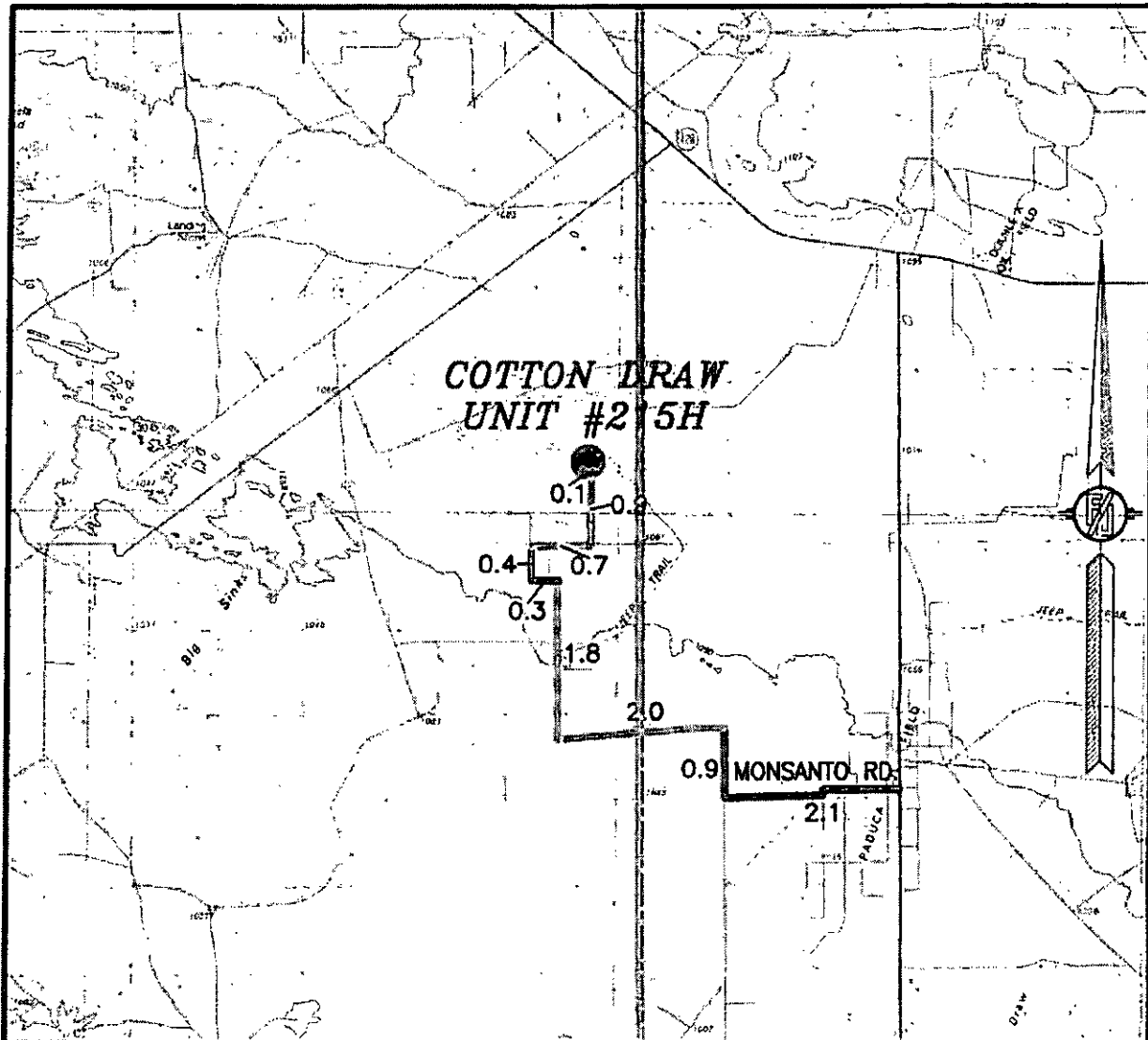
DEVON ENERGY PRODUCTION COMPANY, L.P.
COTTON DRAW UNIT #215H
LOCATED 200 FT. FROM THE NORTH LINE
AND 1760 FT. FROM THE WEST LINE OF
SECTION 36, TOWNSHIP 24 SOUTH,
RANGE 31 EAST, N.M.P.M.
EDDY COUNTY, STATE OF NEW MEXICO

JUNE 1, 2013

SURVEY NO. 1887

MADRON SURVEYING, INC. 301 SOUTH CANAL (575) 234-3341 CARLSBAD, NEW MEXICO

SECTION 36, TOWNSHIP 24 SOUTH, RANGE 31 EAST, N.M.P.M.
EDDY COUNTY, STATE OF NEW MEXICO
VICINITY MAP



DISTANCES IN MILES

NOT TO SCALE

DIRECTIONS TO LOCATION

FROM INTERSECTION OF ORLA HWY #1 & MONSANTO ROAD GO WEST ON MONSANTO ROAD APPROX. 2.1 MILES ROAD TURNS RIGHT (NORTH) GO NORTH APPROX. 0.9 MILES ROAD TURNS LEFT (WEST) GO WEST APPROX. 2.0 MILES ROAD TURNS RIGHT (NORTH) GO NORTH APPROX. 1.8 MILES ROAD TURNS LEFT (WEST) GO WEST APPROX. 0.3 MILES ROAD TURNS RIGHT (NORTH) GO NORTH 0.4 MILES CROSS CATTLE GUARD TURN RIGHT (EAST) GO EAST APPROX. 0.7 MILES ROAD TURNS LEFT (NORTH) GO NORTH APPROX. 0.9 MILES ROAD TURNS LEFT (WEST) GO WEST APPROX. 0.1 MILES EAST SIDE OF FRAC POND A ROAD LATH WITH RED AND WHITE FLAGGING LOCATION IS NORTH OF ROAD 400± FEET.

DEVON ENERGY PRODUCTION COMPANY, L.P.
COTTON DRAW UNIT #215H

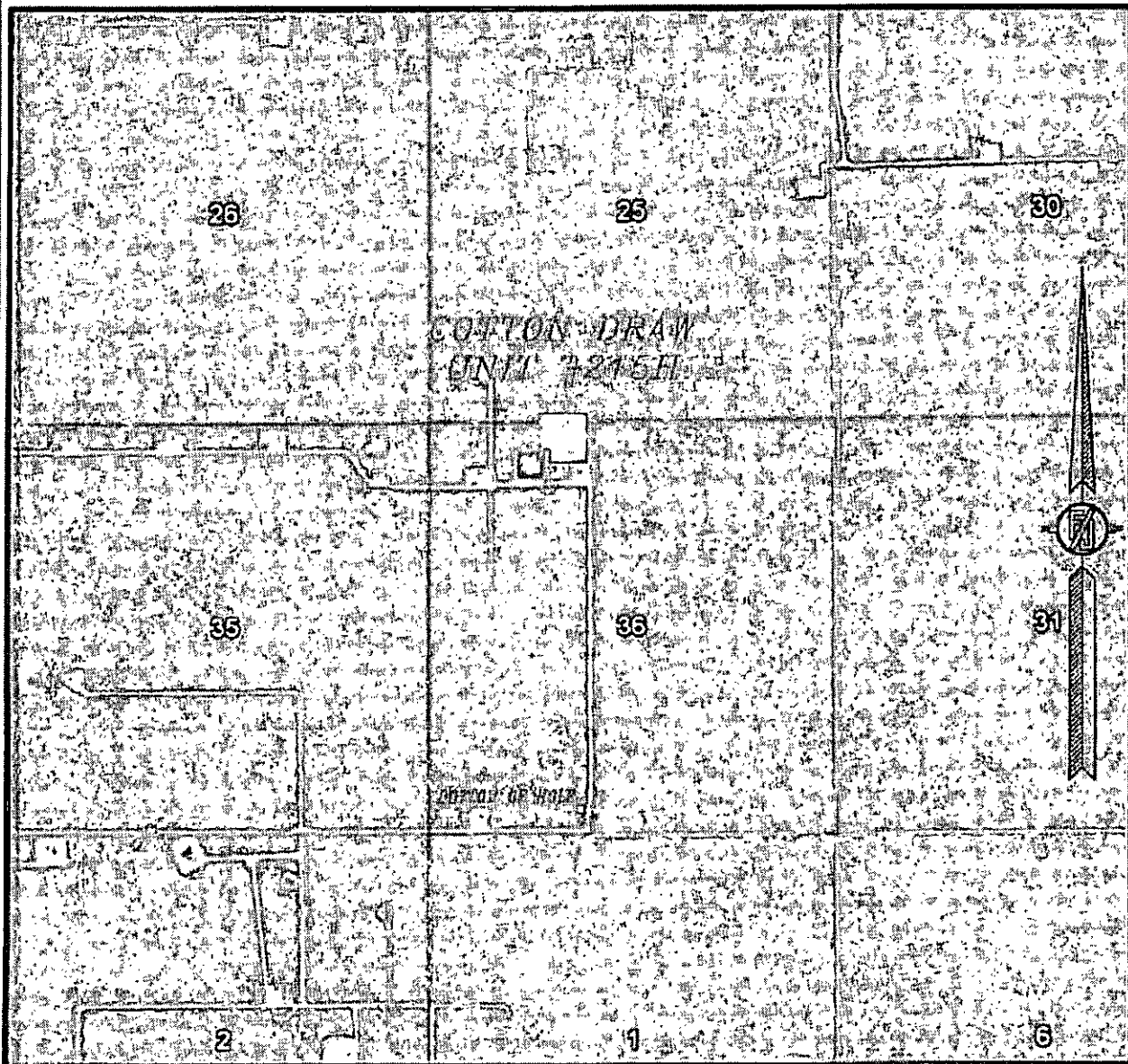
LOCATED 200 FT. FROM THE NORTH LINE
AND 1760 FT. FROM THE WEST LINE OF
SECTION 36, TOWNSHIP 24 SOUTH,
RANGE 31 EAST, N.M.P.M.
EDDY COUNTY, STATE OF NEW MEXICO

JUNE 1, 2013

SURVEY NO. 1887

MADRON SURVEYING, INC. 301 SOUTH CANAL (575) 234-3341 CARLSBAD, NEW MEXICO

SECTION 36, TOWNSHIP 24 SOUTH, RANGE 31 EAST, N.M.P.M.
EDDY COUNTY, STATE OF NEW MEXICO
AERIAL PHOTO



NOT TO SCALE
AERIAL PHOTO:
GOOGLE EARTH
MARCH 2012

DEVON ENERGY PRODUCTION COMPANY, L.P.
COTTON DRAW UNIT #215H

LOCATED 200 FT. FROM THE NORTH LINE
AND 1760 FT. FROM THE WEST LINE OF
SECTION 36, TOWNSHIP 24 SOUTH,
RANGE 31 EAST, N.M.P.M.
EDDY COUNTY, STATE OF NEW MEXICO

JUNE 1, 2013

SURVEY NO. 1887

MADRON SURVEYING, INC. 301 SOUTH CANAL (575) 234-3341 CARLSBAD, NEW MEXICO