

Submit 1 Copy To Appropriate District Office  
District I - (575) 393-6161  
1625 N. French Dr., Hobbs, NM 88240  
District II - (575) 748-1283  
811 S. First St., Artesia, NM 88210  
District III - (505) 334-6178  
1000 Rio Brazos Rd., Aztec, NM 87410  
District IV - (505) 476-3460  
1220 S. St. Francis Dr., Santa Fe, NM 87505

State of New Mexico  
Energy, Minerals and Natural Resources

Form C-103  
Revised August 1, 2011

OIL CONSERVATION DIVISION  
1220 South St. Francis Dr.  
Santa Fe, NM 87505

MAR 09 2016

RECEIVED

WELL API NO. 30-015-37874
5. Indicate Type of Lease STATE <input checked="" type="checkbox"/> FEE <input type="checkbox"/>
6. State Oil & Gas Lease No.
7. Lease Name or Unit Agreement Name PARKWAY 11 STATE COM.
8. Well Number 002H
9. OGRID Number 162683
10. Pool name or Wildcat TURKEY TRACK; BONE SPRING

Unit Letter C : 330 feet from the NORTH line and 1980 feet from the WEST line Section 11 Township 19S Range 29E NMPM EDDY County
11. Elevation (Show whether DR, RKB, RT, GR, etc.) 3,361' - GR

12. Check Appropriate Box to Indicate Nature of Notice, Report or Other Data

NOTICE OF INTENTION TO:

PERFORM REMEDIAL WORK ☐ PLUG AND ABANDON ☒  
TEMPORARILY ABANDON ☐ CHANGE PLANS ☐  
PULL OR ALTER CASING ☐ MULTIPLE COMPL ☐  
DOWNHOLE COMMINGLE ☐

SUBSEQUENT REPORT OF:

REMEDIAL WORK ☐ ALTERING CASING ☐  
COMMENCE DRILLING OPNS. ☐ P AND A  
CASING/CEMENT JOB ☐

OTHER: ☐

OTHER: ☐

13. Describe proposed or completed operations. (Clearly state all pertinent details, and give pertinent dates, including estimated date of starting any proposed work). SEE RULE 19.15.7.14 NMAC. For Multiple Completions: Attach wellbore diagram of proposed completion or recompletion.

- 1) SET 5-1/2" CIBP @ 7,700'; PUMP 25 SXS. CMT. @ 7,700'-7,530'; CIRC. WELL W/ PXA MUD.
- 2) PUMP 25 SXS. CMT. @ 7,000'-6,830' (T/B.S.).
- 3) PUMP 25 SXS. CMT. @ 4,795'-4,655' (SPACER PLUG).
- 4) PUMP 60 SXS. CMT. @ 2,621'-2,472' (5-1/2" CSG.STUB, 9-5/8" CSG.SHOE); WOC X TAG CMT. PLUG.
- 5) PUMP 50 SXS. CMT. @ 1,120'-1,010' (B/SALT, B/ANHY.); WOC X TAG CMT. PLUG.
- 6) PUMP 100 SXS. CMT. @ 502'-210' (13-3/8" CSG.SHOE, T/SALT, T/ANHY.); WOC X TAG CMT. PLUG.
- 7) MIX X CIRC. TO SURF. 25 SXS. CMT. @ 63'-3'.
- 8) DIG OUT X CUT OFF WELLHEAD 3' B.G.L.; WELD ON STEEL PLATE TO CSGS. X INSTALL DRY HOLE MARKER.

DURING THIS PROCEDURE WE PLAN TO USE THE CLOSED-LOOP SYSTEM W/ A STEEL TANK AND HAUL CONTENTS TO THE REQUIRED DISPOSAL, PER OCD RULE 19/15/17.

Spud Date:

Rig Release Date:

Approved for plugging of well bore only.  
Liability under bond is retained pending receipt of C-103 (Subsequent Report of Well Plugging) which may be found at OCD Web Page under Form: [www.cmnrd.state.nm.us/oed](http://www.cmnrd.state.nm.us/oed).

WELL MUST BE PLUGGED BY 3/10/2017

I hereby certify that the information above is true and complete to the best of my knowledge and belief.

SIGNATURE

*David A. Eyer*

TITLE: AGENT

DATE: 03/02/16

Type or print name: DAVID A. EYLER

E-mail address: DEYLER@MILAGRO-RES.COM PHONE: 432.687.3033

For State Use Only

APPROVED BY:

*Salut 2 Blvd*

TITLE COMPLIANCE OFFICER

DATE 3/10/2016

Conditions of Approval (if any):

575-626-0836

**CIMAREX**

KB - 18' above GL

Cimarex Energy Co. of Colorado

Parkway 11 State Com #2H

SHL - 330' FNL & 1980' FWL

BHL - 330' FSL & 1980' FWL

Sec. 11, T-19-S, R-29-E, Eddy Co., NM

Dean Pearson

2/8/2016

**30-015-37874**

20" Conductor @ 80'

13-3/8" 48# ST&C csg @ 452'

cmtd w/ 1041 sx, TOC @ surface

TOC @ 2000' by TS

9-5/8" HCP-110 LT&C csg @ 2522'

cmtd w/ 915 sx, TOC @ surface

Pulled & LD 68 JTS 5-1/2" 17# P-110 LT&C (10/13/15)

Top of 5-1/2" @ ~2,571'

(Casing was parted @ connection)

**NM OIL CONSERVATION**

ARTESIA DISTRICT

**MAR 09 2016**

**RECEIVED**

5-1/2 17# P-110 LT&C csg @ 11960'

cmtd w/ 1975 sx,

TOC @ 2000'

KOP @ 7767'

178.29° azimuth

Drilled out to 7767'

200 sxs cmt on top of plug

Cmt Plug @ 7958'

2nd Bone Spring Perfs (8000' - 11909') MD

PBTD @ 11,916' (MD) & 8019' (TVD)

TD @ 11969' (MD) & 8019' (TVD)

2 CIBP @ 11,918 & 11,919'

TD @ 8300'



KB - 18' above GL

Cimarex Energy Co. of Colorado

Parkway 11 State Com #2H

SHL - 330' FNL & 1980' FWL

BHL - 330' FSL & 1980' FWL

Sec. 11, T-19-S, R-29-E, Eddy Co., NM

Dean Pearson

2/8/2016

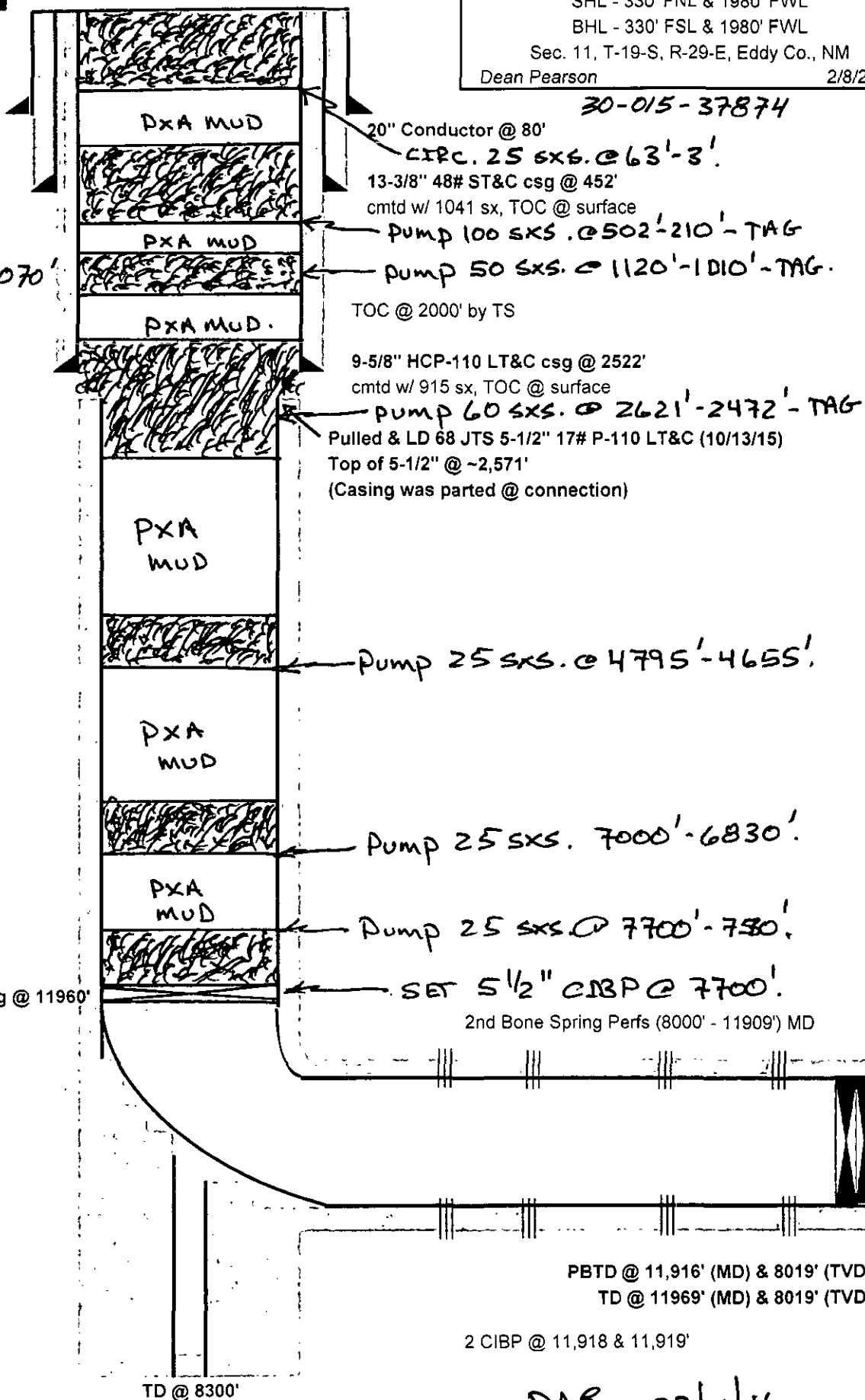
30-015-37874

T/ANHY. ~ 285'

T/SALT. ~ 260'

B/SALT, ANHY. ~ 1070'

T/B.S. 6915



PBTD @ 11,916' (MD) & 8019' (TVD)  
TD @ 11969' (MD) & 8019' (TVD)

2 CIBP @ 11,918 & 11,919'

DAE 03/11/16

**NEW MEXICO OIL CONSERVATION DIVISION  
DISTRICT 2 OFFICE  
811 S. FIRST STREET  
ARTESIA, NM 88210  
(575)748-1283**

**CONDITIONS OF APPROVAL FOR PLUGGING & ABANDONMENT**

**Operator:** \_\_\_\_\_  
**Well Name & Number:** \_\_\_\_\_  
**API #:** \_\_\_\_\_

1. Produced water **will not** be used during any part of the plugging & abandonment operation.
2. Notify NMOCD Dist. 2 office at least 24 hrs before beginning work.
3. Closed Loop System is to be used for entire plugging operation. Upon completion, contents of steel pit are to be hauled to a permitted disposal location.
4. Trucking companies being used to haul oilfield waste fluids to a disposal – commercial or private – shall have an approved NMOCD C-133 permit. A copy of this permit shall be available in each truck used to haul waste products. It is the responsibility of the operator, as well as the contractor, to verify that this permit is place prior to performing work. Drivers shall produce a copy upon request of NMOCD Field Inspectors.
5. A subsequent C-103 will serve as notification that the well bore has been plugged **ONLY**. A C-103 FINAL shall be filed before any bonding can be released on the well. Upon receipt of the Final, an inspection will be performed to verify that the location has been satisfactorily cleaned to NMOCD standards.
6. If work has not begun within 90 days of the approval of this procedure, an extension request must be filed, stating reason that well has not been plugged.
7. Every attempt must be made to clean the well bore out to below the perfs, before any plugs can be set, by whatever means possible.
8. **Cement Retainers may not be used.**
9. **Squeeze pressures are not to exceed 500 PSI, unless approval is given by NMOCD.**
10. **Plugs may be combined after consulting with and getting approval from NMOCD.**
11. **Minimum WOC time for tag plugs will be 4 Hrs.**
12. **19.15.7.16 : B.** In the case of a dry hole, a complete record of the well on form C-105 with the attachments listed in Subsection A of 19.15.7.16 NMAC shall accompany the notice of intention to plug the well, unless previously filed. The division shall not approve the plugging report or release the bond the operator has complied with 19.15.7.16 NMAC.

**DATE:**

**APPROVED BY:**

### N.M.O.C.D.- Guidelines For Plugging

- All cement plugs will be a minimum of 100' in length, or a minimum of 25sx. Of cement, whichever is greater.
- Mud laden fluids must be placed between all cement plugs.
- Mud laden fluids must be mixed at 25 sx. Of gel per 100 bbls. Of water.
- A cement plug is required to be set 50' below, and 50' above all casing shoes, and casing stubs. **These plugs must be tagged.**
- A CIBP with 35' of cement on top, may be set instead of 100' plug.
- A plug as indicated above, must be placed within 100' of top perforation. **This plug must be tagged.**
- Plugs set above and below all salt zones, **must be tagged.**
- No more than 2000' is to be allowed between plugs in open hole, and no more than 3000' between plugs in cased hole.
- D.V. tools are required to have a 100' cement plug set 50' above, and 50' below the tool. **This plug must be tagged.**

Formations to be isolated with plugs placed at the top of each formation are:

- Fusselman
- Devonian
- Morrow
- Wolfcamp
- Bone Springs
- Delaware
- Any salt section (plug at top and bottom)
- Abo
- Glorietta
- Yates ( this plug is usually at base of salt section)

If cement does not exist behind casing strings at recommended formation depths, the casing must be cut and pulled with plugs set at these depths, or casing must be perforated and squeezed behind casing at the formation depths.

In the R-111P area (Potash mine area) a solid cement plug must be set across the salt section. Fluid used to mix the cement shall be saturated with the salts common to the section penetrated, and in suitable proportions, but not more than a 3% calcium chloride by weight of cement will be considered the desired mixture whenever possible.