

NM OIL CONSERVATION ARTESIA DISTRICT

Submit To Appropriate District Office Two Copies District I 1625 N. French Dr., Hobbs, NM 88240 District II 811 S. First St., Artesia, NM 88210 District III 1000 Rio Brazos Rd., Aztec, NM 87410 District IV 1220 S. St. Francis Dr., Santa Fe, NM 87505	RECEIVED RECEIVED Oil Conservation Division 220 South St. Francis Dr. Santa Fe, NM 87505	Form C-105 Revised August 1, 2011
--	--	--------------------------------------

WELL COMPLETION OR RECOMPLETION REPORT AND LOG

4. Reason for filing: <input checked="" type="checkbox"/> COMPLETION REPORT (Fill in boxes #1 through #31 for State and Fee wells only) <input type="checkbox"/> C-144 CLOSURE ATTACHMENT (Fill in boxes #1 through #9, #15 Date Rig Released and #32 and/or #33; attach this and the plat to the C-144 closure report in accordance with 19.15.17.13.K NMAC)								5. Lease Name or Unit Agreement Name KOBE 22 STATE OIL CONSERVATION			
7. Type of Completion: <input checked="" type="checkbox"/> NEW WELL <input type="checkbox"/> WORKOVER <input type="checkbox"/> DEEPENING <input type="checkbox"/> PLUGBACK <input type="checkbox"/> DIFFERENT RESERVOIR <input type="checkbox"/> OTHER								6. Well Number: 1Y			
8. Name of Operator JALAPENO CORPORATION								9. OGRID 26307			
10. Address of Operator PO BOX 1608; ALBUQUERQUE, NEW MEXICO 87103								11. Pool name or Wildcat Wolflake; San Andres, S.			
12. Location	Unit Ltr	Section	Township	Range	Lot	Feet from the	N/S Line	Feet from the	E/W Line	County	
Surface:	E	22	9S	27E		2190	NORTH	280	WEST	CHAVEZ	
Btl:											
13. Date Spudded 10/7/14		14. Date T.D. Reached 2/16/15		15. Date Rig Released 3/12/15		16. Date Completed (Ready to Produce) 3/11/15		17. Elevations (DF and RKB, RT, GR, etc.) GL 3860'			
18. Total Measured Depth of Well 2112'				19. Plug Back Measured Depth 2098'		20. Was Directional Survey Made? Yes		21. Type Electric and Other Logs Run Density, Laterlog, Perf. and cement bond			
22. Producing Interval(s), of this completion - Top, Bottom, Name 2070' to 2094' of San andres											

CASING RECORD (Report all strings set in well)

CASING SIZE	WEIGHT LB./FT.	DEPTH SET	HOLE SIZE	CEMENTING RECORD	AMOUNT PULLED
8 5/8	24#	419	12 1/4	Circulated to surface	
5 1/2	15.5#	2112	7 7/8	2112-1580	

24. LINER RECORD					25. TUBING RECORD		
SIZE	TOP	BOTTOM	SACKS CEMENT	SCREEN	SIZE	DEPTH SET	PACKER SET
					2 3/8	2094	None

26. Perforation record (interval, size, and number) 2050-2054= 2 shot/ft, 9 shots 2070-2074= 2 shot/ft, 9 shots 2082-2086= 2 shot/ft, 9 shots 2090-2094= 2 shot/ft, 9 shots				27. ACID, SHOT, FRACTURE, CEMENT, SQUEEZE, ETC. <table border="1" style="width: 100%; border-collapse: collapse;"> <tr> <th>DEPTH INTERVAL</th> <th>AMOUNT AND KIND MATERIAL USED</th> </tr> <tr> <td>2050-2094</td> <td>2500 gallons of 20% acid</td> </tr> <tr><td> </td><td> </td></tr> <tr><td> </td><td> </td></tr> </table>		DEPTH INTERVAL	AMOUNT AND KIND MATERIAL USED	2050-2094	2500 gallons of 20% acid				
DEPTH INTERVAL	AMOUNT AND KIND MATERIAL USED												
2050-2094	2500 gallons of 20% acid												

28. PRODUCTION							
Date First Production 3/15/15		Production Method (<i>Flowing, gas lift, pumping - Size and type pump</i>) Swabing				Well Status (<i>Prod. or Shut-in</i>) Prod	
Date of Test 3/15/15	Hours Tested 24	Choke Size 2"	Prod'n For Test Period 10.8	Oil - Bbl 5	Gas - MCF 0	Water - Bbl.	Gas - Oil Ratio N/K
Flow Tubing Press.	Casing Pressure 20#	Calculated 24-Hour Rate	Oil - Bbl.	Gas - MCF	Water - Bbl.	Oil Gravity - API - (<i>Corr.</i>) 20	

29. Disposition of Gas (<i>Sold, used for fuel, vented, etc.</i>)	30. Test Witnessed By Rick Hammond
---	--

31. List Attachments High Resolution Laterlog Array; Compensated Neutron Log; Perforating Record & Cement Bond Log
--

32. If a temporary pit was used at the well, attach a plat with the location of the temporary pit.
--

33. If an on-site burial was used at the well, report the exact location of the on-site burial: Latitude 33.51866°N Longitude 104.185°W NAD 1927 1983
--

I hereby certify that the information shown on both sides of this form is true and complete to the best of my knowledge and belief			
Signature	Printed Name EMMONS YATES, III	Title VICE PRESIDENT	Date 4/22/15
E-mail Address eyates@jalapenocorp.com			

INSTRUCTIONS

This form is to be filed with the appropriate District Office of the Division not later than 20 days after the completion of any newly-drilled or deepened well and not later than 60 days after completion of closure. When submitted as a completion report, this shall be accompanied by one copy of all electrical and radio-activity logs run on the well and a summary of all special tests conducted, including drill stem tests. All depths reported shall be measured depths. In the case of directionally drilled wells, true vertical depths shall also be reported. For multiple completions, items 11, 12 and 26-31 shall be reported for each zone.

INDICATE FORMATION TOPS IN CONFORMANCE WITH GEOGRAPHICAL SECTION OF STATE

Southeastern New Mexico		Northwestern New Mexico	
T. Anhy	T. Canyon 2460'	T. Ojo Alamo	T. Penn A"
T. Salt	T. Strawn 3350'	T. Kirtland	T. Penn. "B"
B. Salt	T. Atoka 3870'	T. Fruitland	T. Penn. "C"
T. Yates	T. Miss	T. Pictured Cliffs	T. Penn. "D"
T. 7 Rivers	T. Devonian	T. Cliff House	T. Leadville
T. Queen	T. Silurian	T. Menefee	T. Madison
T. Grayburg	T. Montoya	T. Point Lookout	T. Elbert
T. San Andres 1400'	T. Simpson	T. Mancos	T. McCracken
T. Glorieta	T. McKee	T. Gallup	T. Ignacio Otzte
T. Paddock	T. Ellenburger	Base Greenhorn	T. Granite
T. Blinbry	T. Gr. Wash	T. Dakota	
T. Tubb	T. Delaware Sand	T. Morrison	
T. Drinkard	T. Bone Springs	T. Todilto	
T. Abo 300'	T.	T. Entrada	
T. Wolfcamp 1038'	T.	T. Wingate	
T. Penn	T.	T. Chinle	
T. Cisco (Bough C) 2060'	T.	T. Permian	

OIL OR GAS SANDS OR ZONES

No. 1, from.....to.....
No. 2, from.....to.....
No. 3, from.....to.....
No. 4, from.....to.....

IMPORTANT WATER SANDS

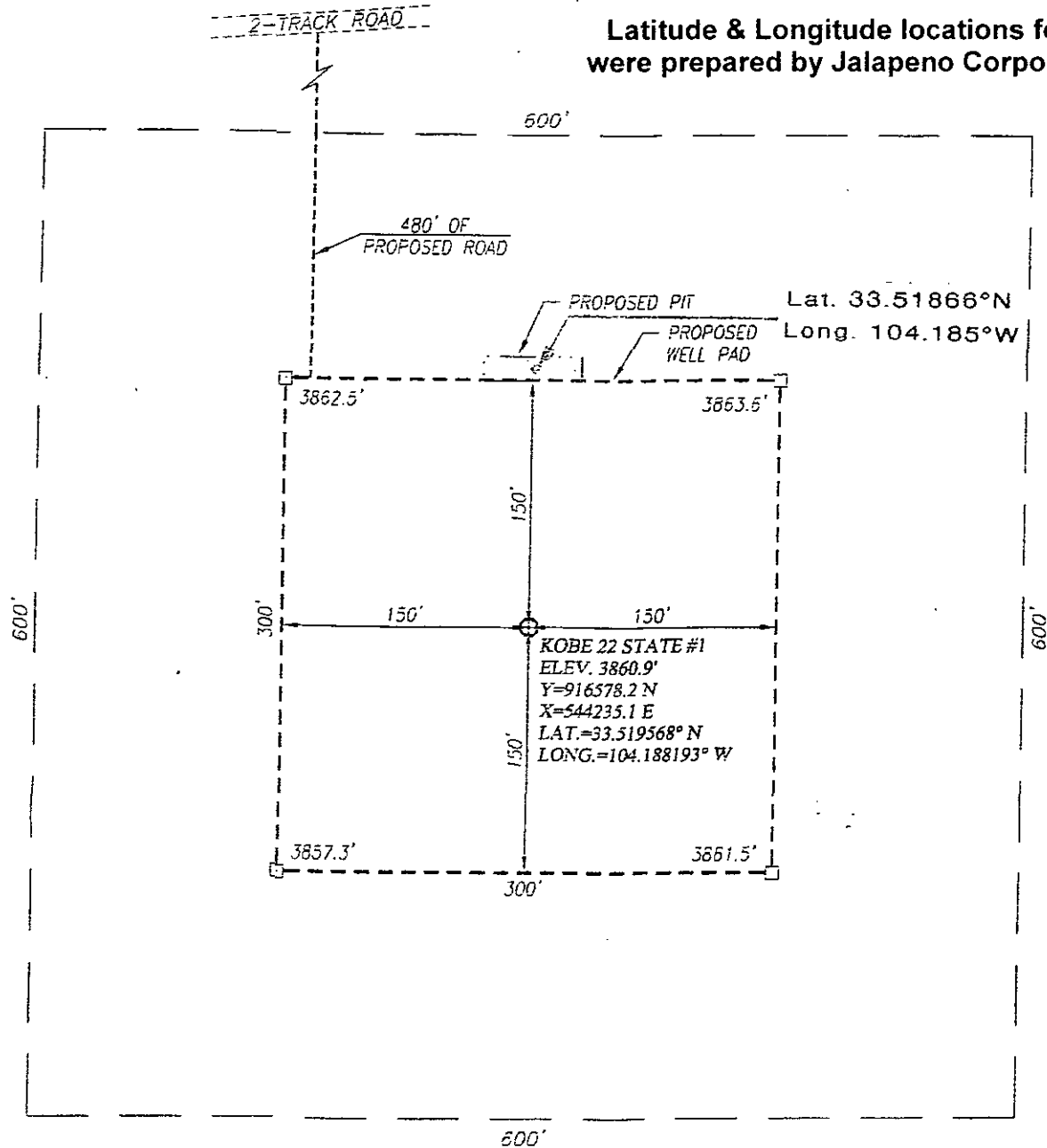
Include data on rate of water inflow and elevation to which water rose in hole.

No. 1, from.....to.....feet.....
No. 2, from.....to.....feet.....
No. 3, from.....to.....feet.....

LITHOLOGY RECORD (Attach additional sheet if necessary)

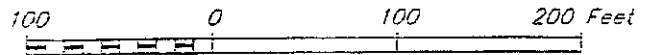
From	To	Thickness In Feet	Lithology	From	To	Thickness In Feet	Lithology
Surface	370	370	Clay and Sand				
370	800	430	Red Beds, Shale, Sand				
800	810	10	Gray Sand				
810	1294	484	Red Beds, Shale, Sand				
1294	2110K	816	Limestone, Anhydrate, Dolomite & Gyp				
2032			P1				

Latitude & Longitude locations for pit
were prepared by Jalapeno Corporation.



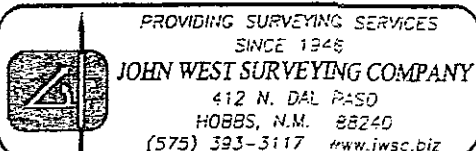
DIRECTIONS TO LOCATION

FROM THE INTERSECTION OF ST. HIGHWAY #380 AND COUNTY ROAD #51 (PONDEROSA RD.) GO NORTH ON CO. RD. #51 APPROX 6.9 MILES; TURN RIGHT AND GO EAST-NORTHEAST APPROX. 0.8 MILES TO A PROPOSED ACCESS ROAD SURVEY. FOLLOW STAKED ROAD SOUTH 480 FEET TO THE NORTHWEST PAD CORNER.



JALAPENO CORPORATION

KOBE 22 STATE #1 WELL
LOCATED 2195 FEET FROM THE NORTH LINE
AND 330 FEET FROM THE WEST LINE OF SECTION 22,
TOWNSHIP 9 SOUTH, RANGE 27 EAST, N.M.P.M.,
CHAVES COUNTY, NEW MEXICO



Survey Date: 11/14/13	CAD Date: 11/19/13	Drawn By: BKL
W.O. No.: 13111268	Rev: .	Rel. W.O.: Sheet 1 of 1