

UNITED STATES  
DEPARTMENT OF THE INTERIOR  
BUREAU OF LAND MANAGEMENTFORM APPROVED  
OMB No 1004-0137  
Expires: October 31, 2014**SUNDRY NOTICES AND REPORTS ON WELLS**  
**Do not use this form for proposals to drill or to re-enter an abandoned well. Use Form 3160-3 (APD) for such proposals.**5. Lease Serial No.  
NM 12764

6. If Indian, Allottee or Tribe Name

**SUBMIT IN TRIPLICATE – Other instructions on page 2.**

1. Type of Well

☐ Oil Well☒ Gas Well☐ Other2. Name of Operator  
Rubicon Oil & Gas, LLC3a. Address  
508 W. Wall St STE 500, Midland, TX 79701

3b. Phone No. (include area code)

4326875100

MAR 28 2016

4. Location of Well (Footage, Sec., T., R., M., or Survey Description)  
1500' FNL & 1980' FEL, Sec 25, T16S, R29E, UL G

7. If Unit of CA/Agreement, Name and/or No.

8. Well Name and No.  
Lonesome Dove 25 Fed Com 19. API Well No.  
30-015-3169810. Field and Pool or Exploratory Area  
Henshaw Morrow SW11. County or Parish, State  
Eddy, NM**RECEIVED**

12. CHECK THE APPROPRIATE BOX(ES) TO INDICATE NATURE OF NOTICE, REPORT OR OTHER DATA

## TYPE OF SUBMISSION

☐ Notice of Intent☒ Subsequent Report☐ Final Abandonment Notice

## TYPE OF ACTION

☐ Acidize☐ Alter Casing☐ Casing Repair☐ Change Plans☐ Convert to Injection☐ Deepen☐ Fracture Treat☐ New Construction☐ Plug and Abandon☒ Plug Back☐ Production (Start/Resume)☐ Reclamation☒ Recomplete☐ Temporarily Abandon☐ Water Disposal☐ Water Shut-Off☐ Well Integrity☐ Other

13. Describe Proposed or Completed Operation: Clearly state all pertinent details, including estimated starting date of any proposed work and approximate duration thereof. If the proposal is to deepen directionally or recomplete horizontally, give subsurface locations and measured and true vertical depths of all pertinent markers and zones. Attach the Bond under which the work will be performed or provide the Bond No. on file with BLM/BIA. Required subsequent reports must be filed within 30 days following completion of the involved operations. If the operation results in a multiple completion or recompletion in a new interval, a Form 3160-4 must be filed once testing has been completed. Final Abandonment Notices must be filed only after all requirements, including reclamation, have been completed and the operator has determined that the site is ready for final inspection.)

Per approved COA dated 7/6/15, Rubicon completed the following operations from 8/17/15 to 8/24/15.

Set CIBP over existing Yeso perfs @ 4073'

Spot 25 sks Class C 14.8 ppg/1.32 ft/sk yield cement from 4073' to 3817'

Spot 16 bbls mud from 3817' to 3147'

Shoot squeeze holes in 5 1/2" csg @ 3150'

Set cement retainer @ 3107'. Cement 5 1/2" casing from 3107' to 3150', 5 1/2" x 7 7/8" annulus from 3150' to 3050' and 5 1/2" x 8 5/8" annulus from 3050' to surface w/527 sks Class C 14.8 ppg/1.32 ft/sk yield cement. Circulated 17 sks to pit as witnessed by Michael Balliett w/BLM.

Tag cement in 5 1/2 csg with wireline @ 3044'.

Performed charted integrity test to 1500 psig for one hour. Copy of chart attached.

As per BLM request, dump bailed cement from 3044' to 3000'.

Tag cement in 5 1/2 csg with tubing @ 2978'.

Will proceed with Grayburg Recompletion.

Current wellbore diagram attached.

Accepted for record  
NMOCDWell record will be updated  
when recompletion is filed14. I hereby certify that the foregoing is true and correct. Name (Printed/Typed)  
Landon Goodgion

Title Operations Engineer/Agent

Signature

Date 08/25/2015

## THIS SPACE FOR FEDERAL OR STATE OFFICE USE

Approved by Accepted by:

Title

Office

Date

Conditions of approval, if any, are attached. Approval of this notice does not warrant or certify that the applicant holds legal or equitable title to those rights in the subject lease which would entitle the applicant to conduct operations thereon.

Title 18 U.S.C. Section 1001 and Title 43 U.S.C. Section 1212, make it a crime for any person knowingly and willfully to make to any department or agency of the United States any false, fictitious or fraudulent statements or representations as to any matter within its jurisdiction.

(Instructions on page 2)

# Rubicon Oil & Gas, LLC Yeso Prospect

KB: 3731'  
GL: 3714'

Lonesome Dove 25 Fed 1  
Eddy County, New Mexico  
**Yeso Recomplete Wellbore**  
**30-015-31698**

1500' FNL & 1980' FEL  
Sec. 25, T16S, R29E, UL G  
Eddy County, NM

Plug back: 4/2/2014  
Prod: 12/20/2001  
TD'd: 5/18/2001  
Spud: 4/18/2001

Bit Size: 17-1/2" drilled to 450'  
8.4-8.6 MW, 32+ Vis, FW Spud Mud

13-3/8" 61# K-55@ 450' w/ Cmt 495sks. C 2% CC  
Circ to surface.

Glorieta ~4120'  
Tubb ~5415'  
Abo ~6120'  
Wolfcamp ~7690'  
Strawn ~9,726'  
Atoka ~10,190'  
Morrow ~10,570'  
TD Miss ~10,768'

Bit Size: 12-1/4" drilled to 3050'

8-5/8" 32# J55 @ 3050' CMT w/ 1100 sks C Lite + 350 sks  
C Circ to surface.

Directions: Artesia, East on Hwy 82 to 8/10 mile  
Past MM 128, turn North CR 215 (Kewanee Rd)  
5 miles, Turn right 1/10 mile, right 7/10 mile to loc.

Cameron 5k 7-1/16" Wellhead

8/18/15: Perforate 3150'. Set retainer @ 3107'. Pump  
527 sks Class C. Circulated 17 sks to surface.  
Witnessed by BLM. Tag TOC in 5 1/2" @ 3044'. Dump  
bail CMT and tag TOC in 5 1/2" @ 2978'.

Capped w/ 25 sks Class C 4073' to 3817'  
5-1/2" CIBP Set @ 4073'

Hole in casing 7292-7324' determined w/PKR 9/28/13  
Set 5-1/2" Retainer 7250' and cement 5-1/2" via hole  
In casing 7292 to 3163' w/ 675 sks C 50/50/10. TOC  
3163' by CBL 4/7/2014.

Yeso:  
Stg 1 Perf 5155-5165' 30 holes  
2k gal 15% NeFeHCL + 49k gal 15#xlink+68k 30/50 white+25k 30/50  
resin 30bpm/3230psi/.94FG  
Stg 2 Perf 4810-4830' 60 holes  
3k gal 15% NeFeHCL + 63k gal 15#xlink+94.3k 30/50 white+25k 30/50  
resin 34bpm/2273psi/.87FG  
Stg 3 Perf 4116-4340' 44 holes  
3k gal 15% NeFeHCL + 98k gal 15#xlink+136.6k 30/50 white+25k 30/50  
resin 49bpm/2640psi/1FG  
Tested for 3BOPD 90BWPD w/ 90% of load recovered. Uneconomical.

Perforated 7740-7741 6 jspf and cmt w/ 50 sks H  
To isolate Wolfcamp. Cement in 5-1/2" 7581 to 7741'  
And in 7-7/8" annulus from 7741 to 7581'

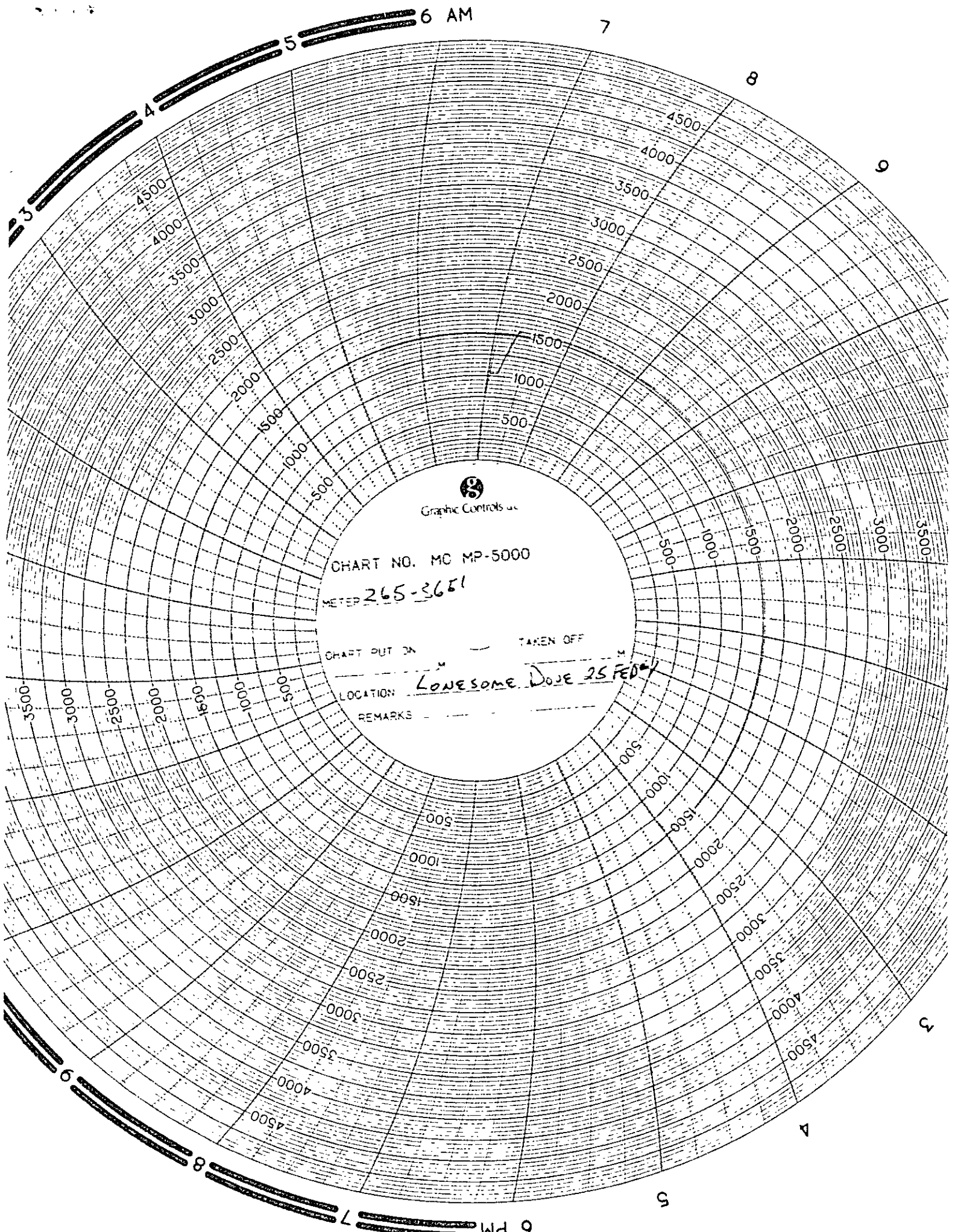
Capped w/ 25 sks H (10,633 to 10,427')  
5-1/2" CIBP Set @ 10,633'

Bit Size: 7-7/8" drilled to 10,856'  
5-1/2" 17# N-80 LTC 10,856' CMT w/ 930 sks H Poz  
TOC 7948' by CBL 9/27/13

Morrow:  
10,683-93' (60 holes, 6 jspf, .40 EHD),  
10,704-10' (36 holes, 6 jspf, .40 EHD).

PBTD: 2978' TD: ~10,856'

LRG 8/25/15



Graphic Controls Inc.

CHART NO. MC MP-5000

METER 265-3651

CHART PUT ON \_\_\_\_\_ TAKEN OFF \_\_\_\_\_

LOCATION LONESOME DOGE 25 FEB 64

REMARKS \_\_\_\_\_