

DISTRICT I
1625 N. French Dr., Hobbs, NM 88240
Phone: (575) 393-6161 Fax: (575) 393-0720

DISTRICT II
811 S. First St., Artesia, NM 88210
Phone: (575) 748-1283 Fax: (575) 748-9720

DISTRICT III
1000 Rio Brazos Road, Aztec, NM 87410
Phone: (505) 334-6178 Fax: (505) 334-6170

DISTRICT IV
1220 S. St. Francis Dr., Santa Fe, NM 87505
Phone: (505) 476-3460 Fax: (505) 476-3462

State of New Mexico
Energy, Minerals & Natural Resources Department
OIL CONSERVATION DIVISION
1220 South St. Francis Dr.
Santa Fe, New Mexico 87505

Form C-102
Revised August 1, 2011
Submit one copy to appropriate
District Office

XAMENDED REPORT

WELL LOCATION AND ACREAGE DEDICATION PLAT

API Number 30-015-42586	Pool Code 96831	Pool Name CEDAR LAKE; GLORIETA-YESO
Property Code 315935	Property Name CEDAR LAKE FEDERAL CA	Well Number 630H
OGRID No. 873	Operator Name APACHE CORPORATION	Elevation 3752'

Surface Location

UL or lot No.	Section	Township	Range	Lot Idn	Feet from the	North/South line	Feet from the	East/West line	County
P	6	17-S	31-E		1050	SOUTH	155	EAST	EDDY

Bottom Hole Location If Different From Surface

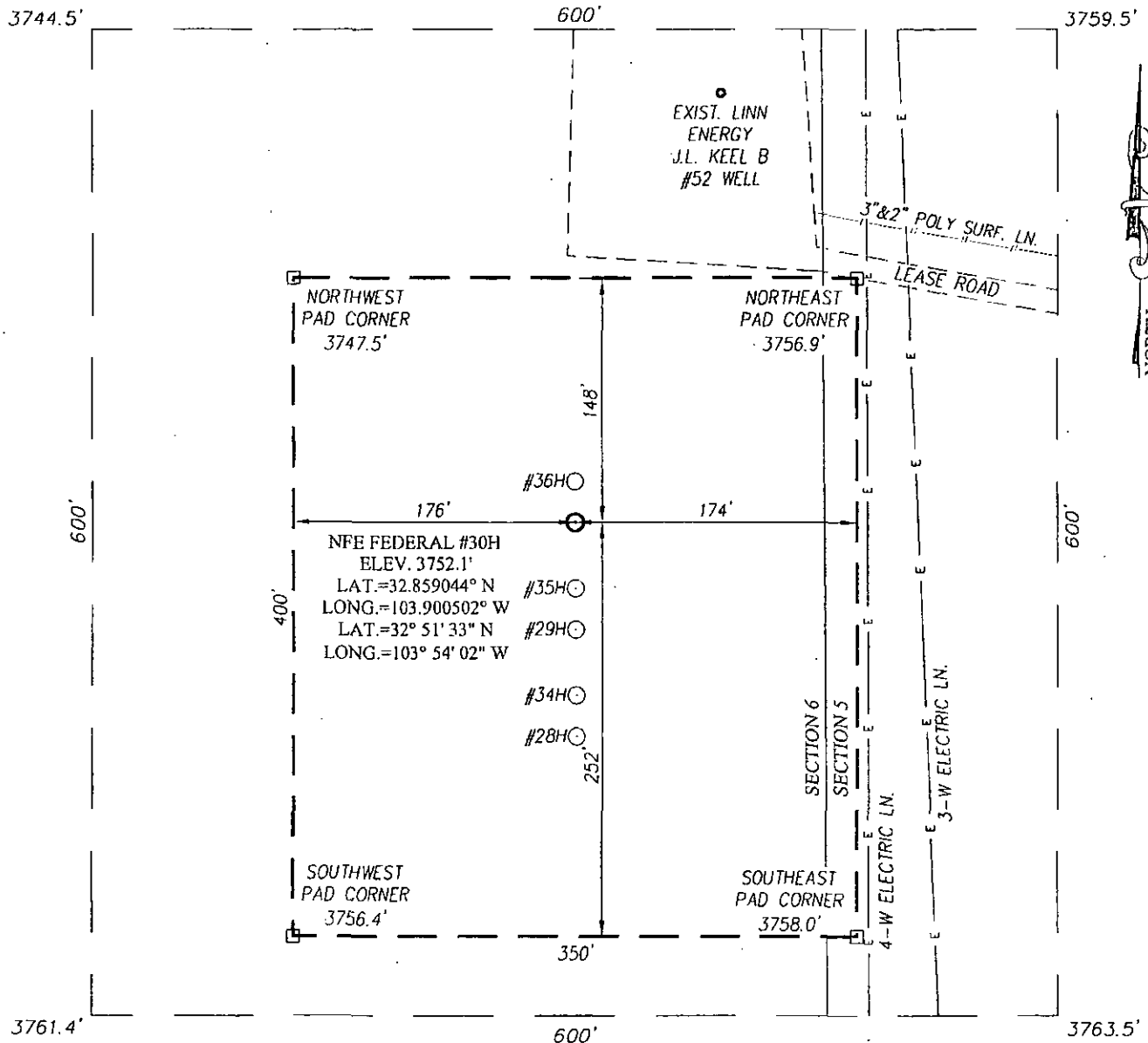
UL or lot No.	Section	Township	Range	Lot Idn	Feet from the	North/South line	Feet from the	East/West line	County
M	6	17-S	31-E		1050	SOUTH	330	WEST	EDDY

Dedicated Acres	Joint or Infill	Consolidation Code	Order No.
160			

NO ALLOWABLE WILL BE ASSIGNED TO THIS COMPLETION UNTIL ALL INTERESTS HAVE BEEN CONSOLIDATED OR A NON-STANDARD UNIT HAS BEEN APPROVED BY THE DIVISION

<p>CORNER COORDINATES TABLE</p> <p>Ⓐ - Y=676741.8 N, X=628067.0 E</p> <p>Ⓑ - Y=676775.0 N, X=633063.5 E</p> <p>Ⓒ - Y=675422.0 N, X=628071.2 E</p> <p>Ⓓ - Y=675455.2 N, X=633070.9 E</p>	<p>GEODETIC COORDINATES NAD 27 NME</p> <p>SURFACE LOCATION Y=676503.9 N X=632910.0 E LAT.=32.859044° N LONG.=103.900502° W LAT.=32° 51' 33" N LONG.=103° 54' 02" W</p> <p>BOTTOM HOLE LOCATION Y=676473.9 N X=628397.8 E</p>	<p>OPERATOR CERTIFICATION</p> <p>I hereby certify that the information herein is true and complete to the best of my knowledge and belief, and that this organization either owns a working interest or unleased mineral interest in the land including the proposed bottom hole location or has a right to drill this well at this location pursuant to a contract with an owner of such mineral or working interest, or to a voluntary pooling agreement or a compulsory pooling order heretofore entered by the division.</p> <p><i>Sorina L Flores</i> 3/7/16 Signature Date Sorina L Flores Printed Name sorina.flores@apachecorp.com E-mail Address</p>
<p>DETAIL</p>		<p>SURVEYOR CERTIFICATION</p> <p>I hereby certify that the well location shown on this plat was plotted from field notes of actual surveys made by me or under my supervision, and that the same is true and correct to the best of my belief.</p> <p>APRIL 5, 2012</p> <p>Date of Survey Signature & Seal of Professional Surveyor: </p> <p>Certificate Number Gary J. Eidson 12641 Ronald J. Eidson 3239 DSS PROFESSIONAL SURVEYOR JWSC W.O.: 12.11.0711</p>

SECTION 6, TOWNSHIP 17 SOUTH, RANGE 31 EAST, N.M.P.M.
EDDY COUNTY NEW MEXICO

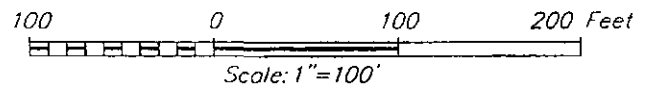


LEGEND:

○ DENOTES PROPOSED NFE FEDERAL WELL LOCATION

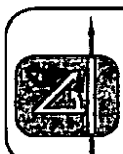
DIRECTIONS TO LOCATION

FROM THE INTERSECTION OF U.S. HIGHWAY 82 AND CO. RD. 221 (SKELLY), GO NORTH ON CO. RD. 1.3 MILES. TURN RIGHT AND GO NORTHEAST APPROX. 0.5 MILES. TURN RIGHT AND GO EAST APPROX. 0.5 MILES. TURN LEFT AND GO NORTH APPROX. 0.8 MILES. TURN LEFT AND GO WEST APPROX. 0.1 MILE TO THE NORTHEAST CORNER OF PAD.



APACHE CORPORATION

NFE FEDERAL #30H WELL
LOCATED 1050 FEET FROM THE SOUTH LINE
AND 155 FEET FROM THE EAST LINE OF SECTION 6,
TOWNSHIP 17 SOUTH, RANGE 31 EAST, N.M.P.M.,
EDDY COUNTY, NEW MEXICO

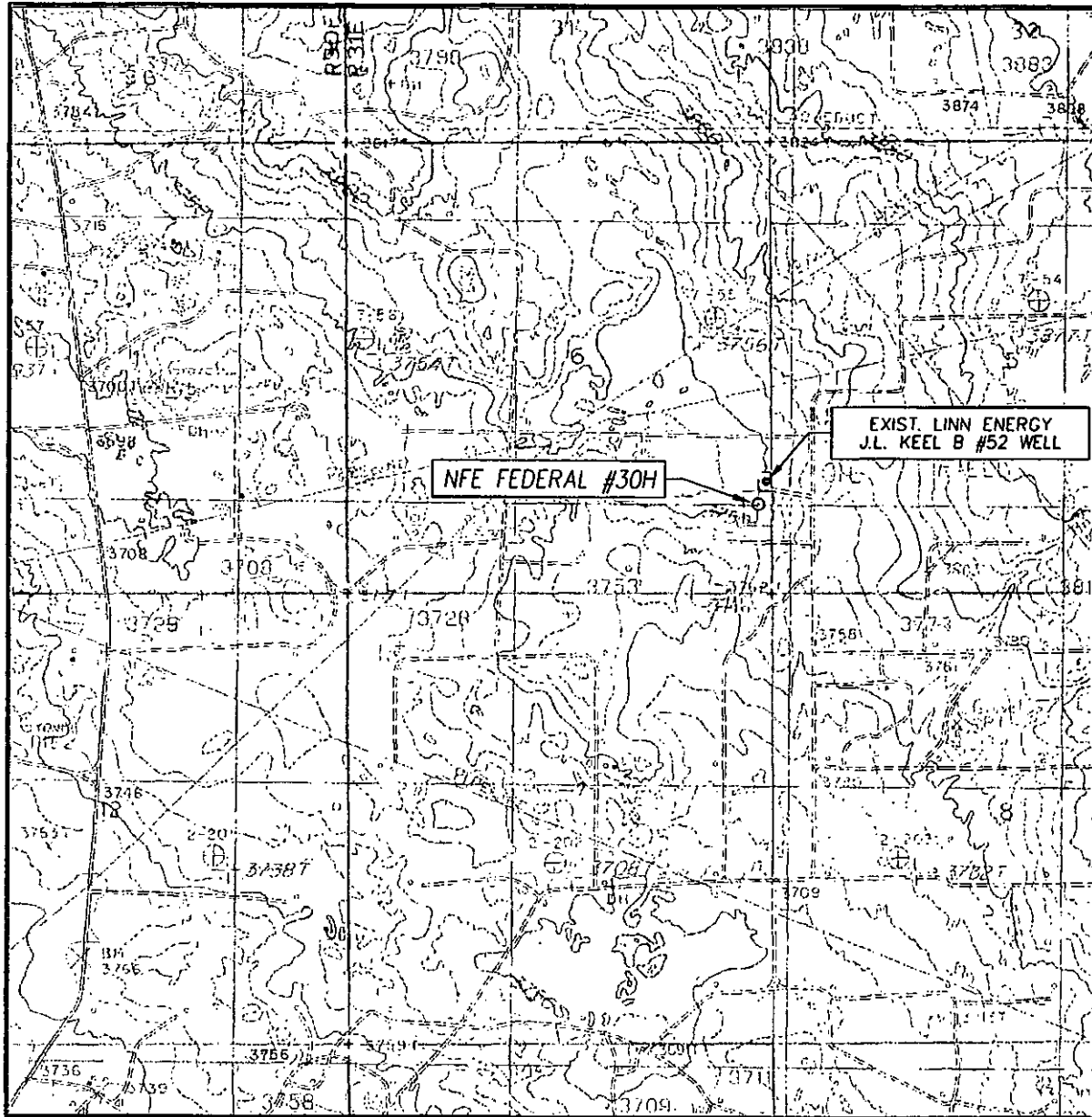


PROVIDING SURVEYING SERVICES
SINCE 1946
JOHN WEST SURVEYING COMPANY
412 N. DAL PASO
HOBBS, N.M. 88240
(575) 393-3117 www.jwsc.biz

Survey Date: 4/5/12	CAD Date: 4/27/12	Drawn By: DSS
W.O. No.: 12110711	Rev.:	Rel. W.O.:

Sheet 1 of 1

LOCATION VERIFICATION MAP



SCALE: 1" = 2000'

CONTOUR INTERVAL:
LOCO HILLS, NM - 10'

SEC. 6 TWP. 17-S RGE. 31-E

SURVEY N.M.P.M.

COUNTY EDDY STATE NEW MEXICO


DESCRIPTION 1050' FSL & 155' FEL

ELEVATION 3752'

OPERATOR APACHE CORPORATION

LEASE NFE FEDERAL

U.S.G.S. TOPOGRAPHIC MAP
LOCO HILLS, N.M.



PROVIDING SURVEYING SERVICES
SINCE 1946
JOHN WEST SURVEYING COMPANY
412 N. DAL PASO
HOBBS, N.M. 88240
(575) 393-3117 www.jwsc.biz