

UNITED STATES
DEPARTMENT OF THE INTERIOR
BUREAU OF LAND MANAGEMENTFORM APPROVED
OMB NO. 1004-0135
Expires: July 31, 2010**SUNDRY NOTICES AND REPORTS ON WELLS**
*Do not use this form for proposals to drill or to re-enter an abandoned well. Use form 3160-3 (APD) for such proposals.***Carlsbad Field Office**
OCD Artesia

SUBMIT IN TRIPLICATE - Other instructions on reverse side.		7. If Unit or CA/Agreement, Name and/or No.
1. Type of Well <input type="checkbox"/> Oil Well <input checked="" type="checkbox"/> Gas Well <input type="checkbox"/> Other	2. Name of Operator RKI EXPLORATION & PROD LLC Contact: HEATHER BREHM E-Mail: Heather.Brehm@blm.gov	8. Well Name and No. EAST PECOS FEDERAL 22 10H
3a. Address 210 PARK AVE SUITE 900 OKLAHOMA CITY, OK 73102	3b. Phone Number Ph: 539-573-7512	9. API Well No. 30-015-43416-00-X1
4. Location of Well (Footage, Sec., T., R., M., or Survey Description) Sec 22 T26S R29E SESW 150FSL 1355FWL		10. Field and Pool, or Exploratory UNDESIGNATED
		11. County or Parish, and State EDDY COUNTY, NM

12. CHECK APPROPRIATE BOX(ES) TO INDICATE NATURE OF NOTICE, REPORT, OR OTHER DATA

TYPE OF SUBMISSION	TYPE OF ACTION			
<input checked="" type="checkbox"/> Notice of Intent	<input type="checkbox"/> Acidize	<input type="checkbox"/> Deepen	<input type="checkbox"/> Production (Start/Resume)	<input type="checkbox"/> Water Shut-Off
<input type="checkbox"/> Subsequent Report	<input type="checkbox"/> Alter Casing	<input type="checkbox"/> Fracture Treat	<input type="checkbox"/> Reclamation	<input type="checkbox"/> Well Integrity
<input type="checkbox"/> Final Abandonment Notice	<input type="checkbox"/> Casing Repair	<input type="checkbox"/> New Construction	<input type="checkbox"/> Recomplete	<input checked="" type="checkbox"/> Other
	<input type="checkbox"/> Change Plans	<input type="checkbox"/> Plug and Abandon	<input type="checkbox"/> Temporarily Abandon	Change to Original A
	<input type="checkbox"/> Convert to Injection	<input type="checkbox"/> Plug Back	<input type="checkbox"/> Water Disposal	PD

13. Describe Proposed or Completed Operation (clearly state all pertinent details, including estimated starting date of any proposed work and approximate duration thereof. If the proposal is to deepen directionally or recompleat horizontally, give subsurface locations and measured and true vertical depths of all pertinent markers and zones. Attach the Bond under which the work will be performed or provide the Bond No. on file with BLM/BIA. Required subsequent reports shall be filed within 30 days following completion of the involved operations. If the operation results in a multiple completion or recompletion in a new interval, a Form 3160-4 shall be filed once testing has been completed. Final Abandonment Notices shall be filed only after all requirements, including reclamation, have been completed, and the operator has determined that the site is ready for final inspection.)

WPX RESPECTFULLY REQUESTS TO MAKE THE FOLLOWING BHL CHANGES TO THE ORIGINAL APD. REVISED PLAT AND DRILLING PLAN ATTACHED.

First Take Last Take BHL
330? FSL & 990? FWL 330? FNL & 990? FWL 230? FNL & 990? FWL

Accepted for record - NMOCD

14. I hereby certify that the foregoing is true and correct. Electronic Submission #338133 verified by the BLM Well Information System For RKI EXPLORATION & PROD LLC, sent to the Carlsbad Committed to AFMSS for processing by PRISCILLA PEREZ on 05/03/2016 (16PP1065SE)	
Name (Printed/Typed) HEATHER BREHM	Title REGULATORY ANALYST
Signature (Electronic Submission)	Date 05/02/2016

THIS SPACE FOR FEDERAL OR STATE OFFICE USE

Approved By REJECTED <i>Mustafa Haguer</i>	(BLM Approver Not Specified) Title PETROLEUM ENGINEER	Date 06/02/2016
Conditions of approval, if any, are attached. Approval of this notice does not warrant or certify that the applicant holds legal or equitable title to those rights in the subject lease which would entitle the applicant to conduct operations thereon.		
Office Carlsbad		

Title 18 U.S.C. Section 1001 and Title 43 U.S.C. Section 1212, make it a crime for any person knowingly and willfully to make to any department or agency of the United States any false, fictitious or fraudulent statements or representations as to any matter within its jurisdiction.

** BLM REVISED ** BLM REVISED ** BLM REVISED ** BLM REVISED ** BLM REVISED **

K-5
6/20/16

DISTRICT I
1625 N. French Dr., Hobbs, NM 88240
Phone: (505) 393-6161 Fax: (505) 393-6120

DISTRICT II
811 S. First St., Artesia, NM 88210
Phone: (505) 748-1283 Fax: (505) 748-9720

DISTRICT III
1000 Rio Brazos Rd., Aztec, NM 87410
Phone: (505) 334-6178 Fax: (505) 334-6170

DISTRICT IV
1220 S. St. Francis Dr., Santa Fe, NM 87505
Phone: (505) 476-3460 Fax: (505) 476-3462

State of New Mexico
Energy, Minerals & Natural Resources Department
OIL CONSERVATION DIVISION
1220 South St. Francis Dr.
Santa Fe, New Mexico 87505

Form C-102
Revised August 1, 2011
Submit one copy to appropriate
District Office
☐ AMENDED REPORT

WELL LOCATION AND ACREAGE DEDICATION PLAT

API Number 30-015-43416	Pool Code 72897	Pool Name UNCONSOLIDATED WOLFCAMP
Property Code 40484	Property Name EAST PECOS FEDERAL 22	Well Number 10H
OGRID No. 246289	Operator Name RKI EXPLORATION & PRODUCTION	Elevation 2879

Surface Location

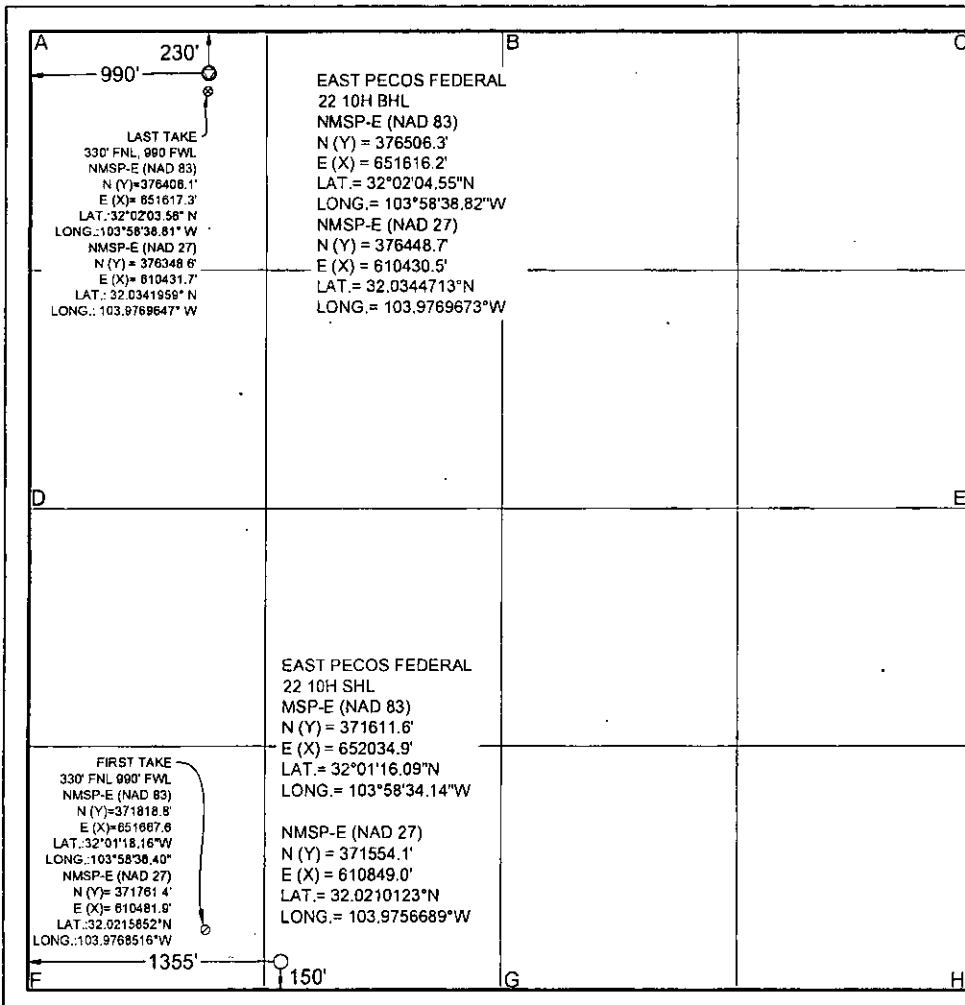
UL or lot no.	Section	Township	Range	Lot Idn	Feet from the	North/South line	Feet from the	East/West line	County
N	22	26S	29E		150	S	1355	W	EDDY

Bottom Hole Location If Different From Surface

UL or lot no.	Section	Township	Range	Lot Idn	Feet from the	North/South line	Feet from the	East/West line	County
D	22	26S	29E		230	N	990	W	EDDY

Dedicated Acres	Joint or Infill	Consolidated Code	Order No.
320.0			

No allowable will be assigned to this completion until all interests have been consolidated or a non-standard unit has been approved by the division.



OPERATOR CERTIFICATION
I hereby certify that the information contained herein is true and complete to the best of my knowledge and belief, and that this organization either owns a working interest or unleased mineral interest in the land including the proposed bottom hole location or has a right to drill this well at this location pursuant to a contract with an owner of such a mineral or working interest, or to voluntary pooling agreement or a compulsory pooling order heretofore entered by the division.

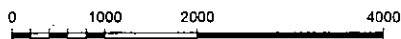
Heather Brehm 05.02.16
Signature Date
Heather Brehm
Print Name
heather.brehm@wpxenrgy.com
E-mail Address

SURVEYORS CERTIFICATION
I hereby certify that the well location shown on this plat was plotted from field notes of actual surveys made by me or under my supervision, and that the same is true and correct to the best of my belief.

MARCH 30, 2016
Date of Survey
Signature and Seal of Professional Surveyor
James E. Tompkins
Job No.: WTC51102
JAMES E. TOMPKINS 14729
Certificate Number

COORDINATES

<p>A. NW COR SEC 22 NMSP-E (NAD 83) N (Y) = 376782.0' E (X) = 650623.0' LAT.: 32°02'07.31"N LONG.: 103°58'50.35"W NMSP-E (NAD 27) N (Y) = 376724.4' E (X) = 609437.3' LAT.=32.0352382°N LONG.=103.9801694°W</p>	<p>B. N 1/4 COR SEC 22 NMSP-E (NAD 83) N (Y) = 376657.5' E (X) = 653340.8' LAT.: 32°02'05.99" LONG.: 103°58'18.78"W NMSP-E (NAD 27) N (Y) = 376600.0' E (X) = 612155.1' LAT.=32.0348713°N LONG.=103.9714005°W</p>	<p>C. NE COR SEC 22 NMSP-E (NAD 83) N (Y) = 376539.6' E (X) = 656059.9' LAT.: 32°02'04.73" N LONG.: 103°57'47.19"W NMSP-E (NAD 27) N (Y) = 376482.0' E (X) = 614874.2' LAT.=32.0345218°N LONG.=103.9626274°W</p>
<p>D. W 1/4 COR SEC 22 NMSP-E (NAD 83) N (Y) = 374169.5' E (X) = 650652.8' LAT.: 32°01'41.45" N LONG.: 103°58'50.10" W NMSP-E (NAD 27) N (Y) = 374112.0' E (X) = 609467.1' LAT.=32.0280564°N LONG.=103.9801009°W</p>		<p>E. E 1/4 COR SEC 22 NMSP-E (NAD 83) N (Y) = 373857.0' E (X) = 656068.2' LAT.: 32°01'38.18" N LONG.: 103°57'47.20"W NMSP-E (NAD 27) N (Y) = 373799.5' E (X) = 614882.4' LAT.=32.0271474°N LONG.=103.9626305°W</p>
<p>F. SW COR SEC 22 NMSP-E (NAD 83) N (Y) = 371559.8' E (X) = 650680.3' LAT.: 32°01'15.63" N LONG.: 103°58'49.88" W NMSP-E (NAD 27) N (Y) = 371502.4' E (X) = 609494.6' LAT.=32.0208821°N LONG.=103.9800399°W</p>	<p>G. S 1/4 COR SEC 22 NMSP-E (NAD 83) N (Y) = 371363.2' E (X) = 653380.8' LAT.: 32°01'13.59" N LONG.: 103°58'18.52" W NMSP-E (NAD 27) N (Y) = 371305.8' E (X) = 612195.0' LAT.=32.0203171°N LONG.=103.9713289°W</p>	<p>H. SE COR SEC 22 NMSP-E (NAD 83) N (Y) = 371166.9' E (X) = 656080.2' LAT.: 32°01'11.56" N LONG.: 103°57'47.17" W NMSP-E (NAD 27) N (Y) = 371109.5' E (X) = 614894.3' LAT.=32.0197524°N LONG.=103.9626219°W</p>



GRAPHIC SCALE 1" = 2000'

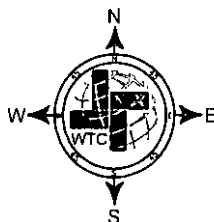
SECTION 22, T. 26S, R. 29E, N.M.P.M.

COUNTY: EDDY STATE: NM

DESCRIPTION: 150' FSL & 1355' FWL

OPERATOR: RKI EXPLORATION & PRODUCTION

WELL NAME: EAST PECOS FEDERAL 22-10H



DRIVING DIRECTIONS:

FROM THE INTERSECTION OF STATE HIGHWAY 285 AND LONGHORN COUNTY ROAD 725. GO EAST/ NORTHEAST ON LONGHORN COUNTY ROAD 725 FOR 6.7 MILES TO A "Y". STAY RIGHT. GO 0.3 MILE IN SOUTHWESTERLY DIRECTON. LOCATION FLAG IS 266 FEET SOUTHEAST.

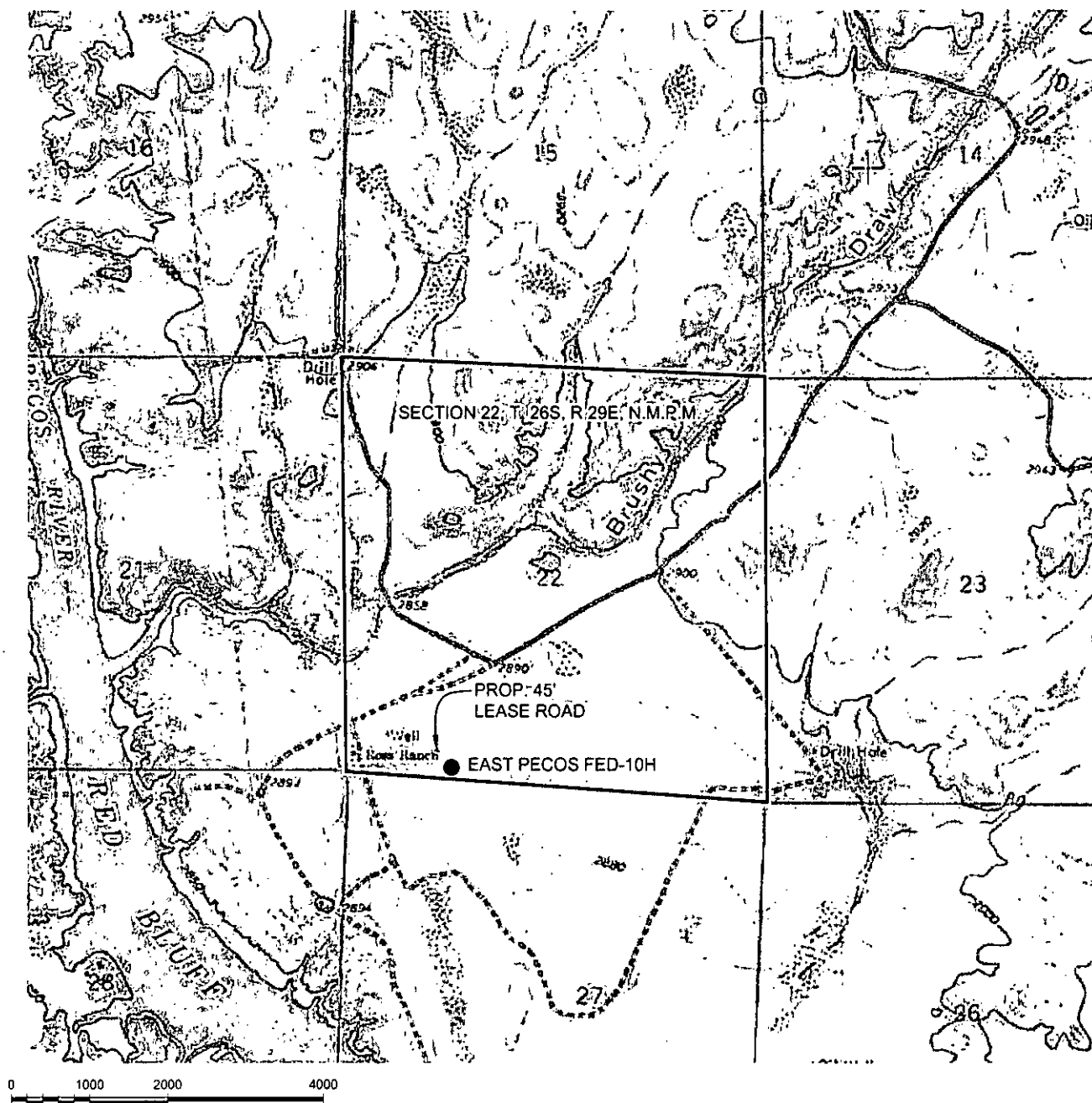


W T C, INC.
405 S.W. 1st Street
Andrews, TX 79714
(432) 523-2181



JOB No.: WTC51102

LOCATION VERIFICATION MAP



SECTION 22, T. 26S, R. 29E, N.M.P.M.

COUNTY: EDDY STATE: NM

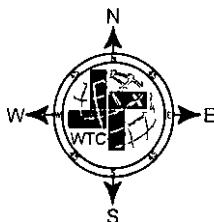
DESCRIPTION: 150' FSL & 1355' FWL

OPERATOR: RKI EXPLORATION & PRODUCTION

WELL NAME: EAST PECOS FEDERAL 22-10H

DRIVING DIRECTIONS:

FROM THE INTERSECTION OF STATE HIGHWAY 285 AND LONGHORN COUNTY ROAD 725. GO EAST/ NORTHEAST ON LONGHORN COUNTY ROAD 725 FOR 6.7 MILES TO A "Y". STAY RIGHT. GO 0.3 MILE IN SOUTHWESTERLY DIRECTON. LOCATION FLAG IS 266 FEET SOUTHEAST.



WTC, INC.
405 S.W. 1st Street
Andrews, TX 79714
(432) 523-2181



AERIAL MAP



0 1000 2000 4000

GRAPHIC SCALE 1" = 2000'

SECTION 22, T 26S, R 29E, N.M.P.M.

COUNTY: EDDY STATE: NM

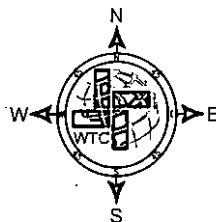
DESCRIPTION: 150' FSL & 1355' FWL

OPERATOR: RKI EXPLORATION & PRODUCTION

WELL NAME: EAST PECOS FEDERAL 22-10H

DRIVING DIRECTIONS:

FROM THE INTERSECTION OF STATE HIGHWAY 285 AND LONGHORN COUNTY ROAD 725. GO EAST/NORTHEAST ON LONGHORN COUNTY ROAD 725 FOR 6.7 MILES TO A "Y". STAY RIGHT. GO 0.3 MILE IN SOUTHWESTERLY DIRECTION. LOCATION FLAG IS 266 FEET SOUTHEAST.

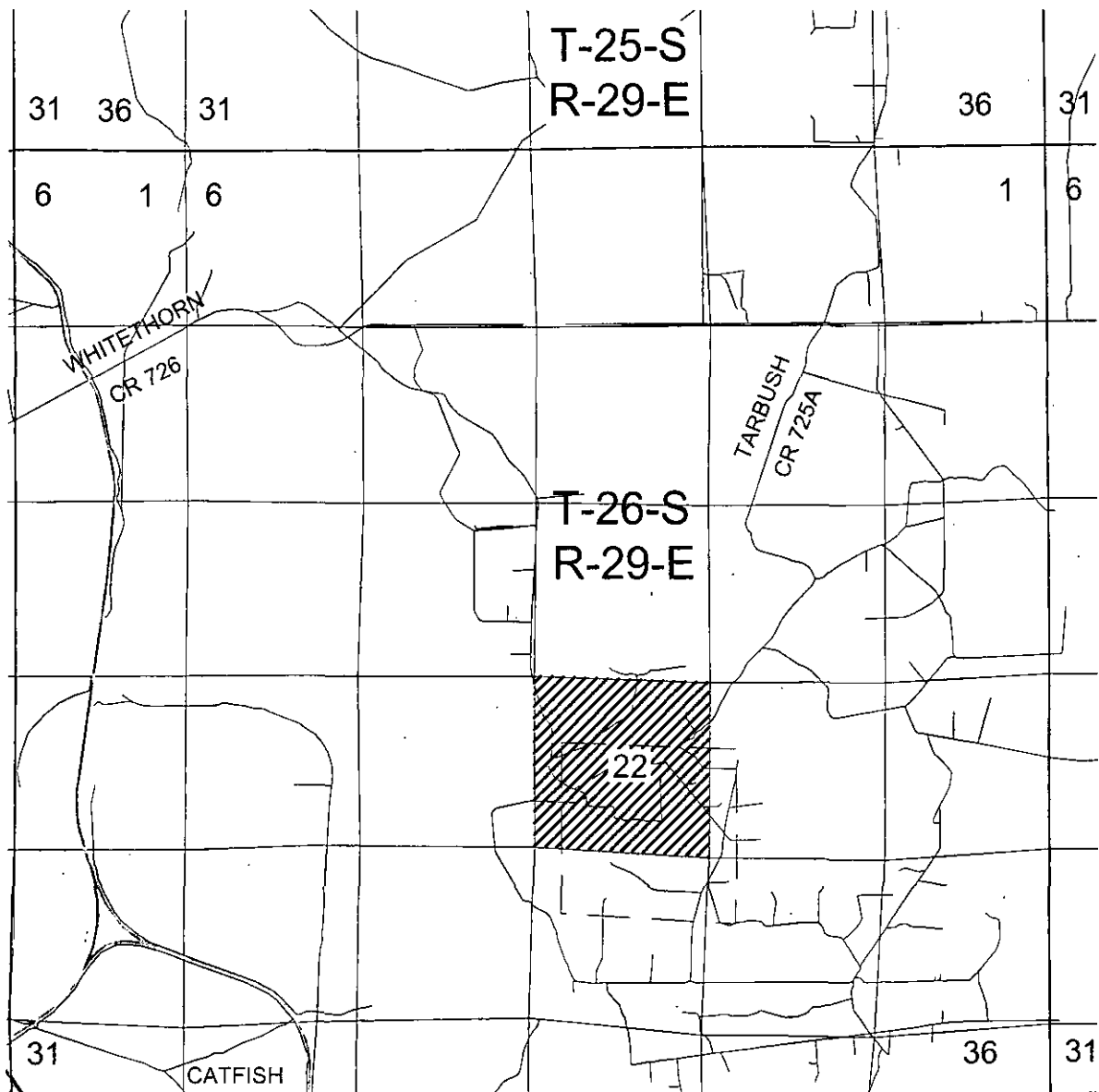


WTC, INC.
405 S.W. 1st Street
Andrews, TX 79714
(432) 523-2181



JOB No.: WTC51102

VICINITY MAP



GRAPHIC SCALE 1" = 1 MILE

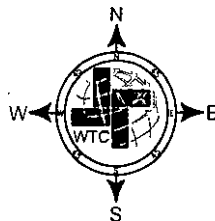
SECTION 22, T. 26S, R. 29E, N.M.P.M.

COUNTY: EDDY STATE: NM

DESCRIPTION: 150' FSL & 1355' FWL

OPERATOR: RKI EXPLORATION & PRODUCTION

WELL NAME: EAST PECOS FEDERAL
22-10H

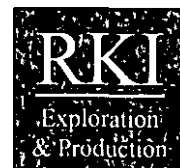


DRIVING DIRECTIONS:

FROM THE INTERSECTION OF STATE HIGHWAY 285 AND LONGHORN COUNTY ROAD 725. GO EAST/NORTHEAST ON LONGHORN COUNTY ROAD 725 FOR 6.7 MILES TO A "Y". STAY RIGHT. GO 0.3 MILE IN SOUTHWESTERLY DIRECTION. LOCATION FLAG IS 266 FEET SOUTHEAST.

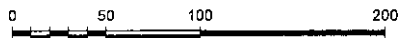
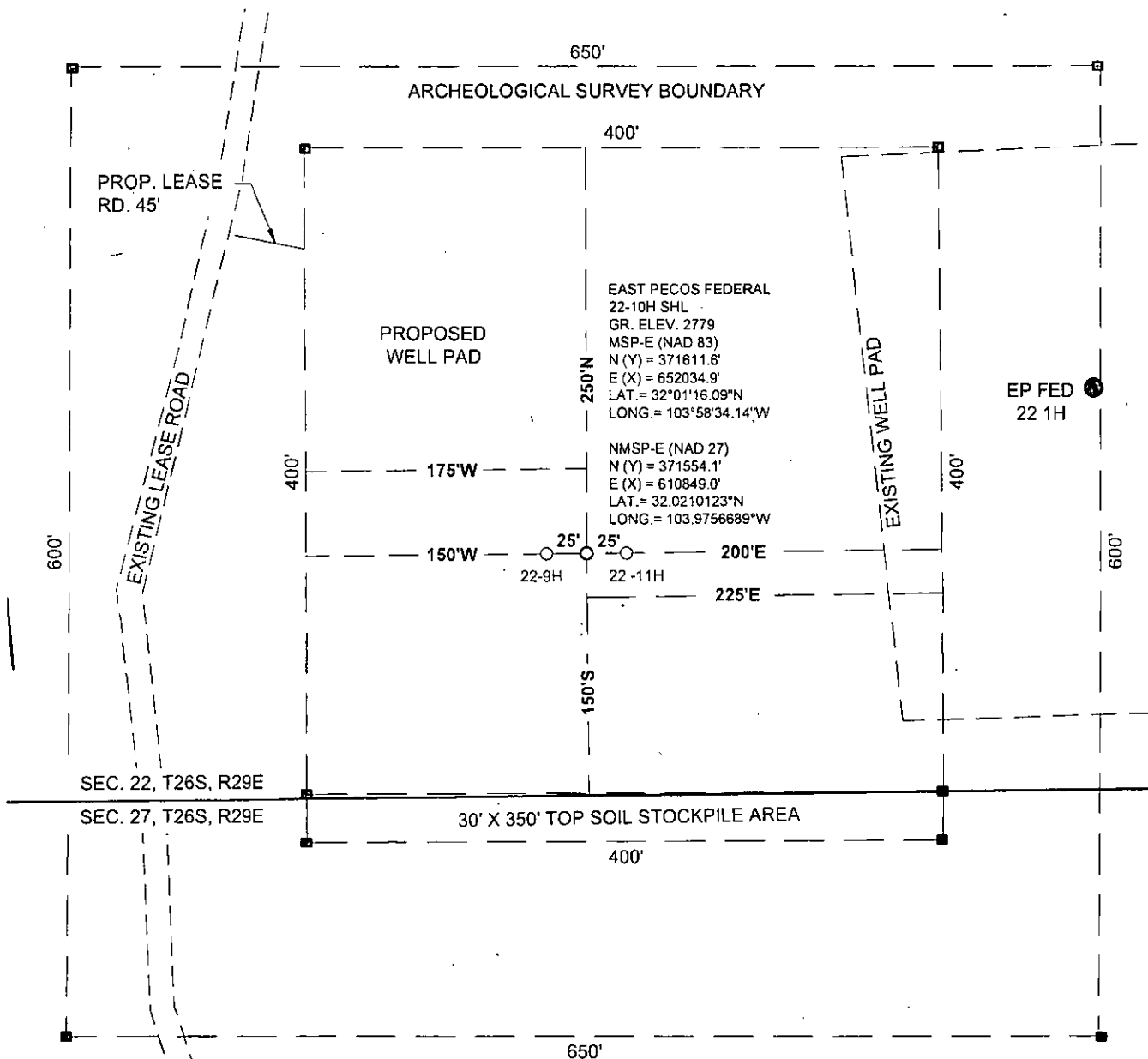


W T C, INC.
405 S.W. 1st Street
Andrews, TX 79714
(432) 523-2181



JOB No.: WTC51102

SITE LOCATION



GRAPHIC SCALE 1" = 100'

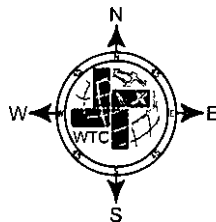
SECTION 22, T. 26S, R 29E, N.M.P.M.

COUNTY: EDDY STATE: NM

DESCRIPTION: 150' FSL & 1355' FWL

OPERATOR: RKI EXPLORATION & PRODUCTION

WELL NAME: EAST PECOS FEDERAL 22-10H



DRIVING DIRECTIONS:

FROM THE INTERSECTION OF STATE HIGHWAY 285 AND LONGHORN COUNTY ROAD 725. GO EAST/ NORTHEAST ON LONGHORN COUNTY ROAD 725 FOR 6.7 MILES TO A "Y", STAY RIGHT. GO 0.3 MILE IN SOUTHWESTERLY DIRECTON. LOCATION FLAG IS 266 FEET SOUTHEAST.

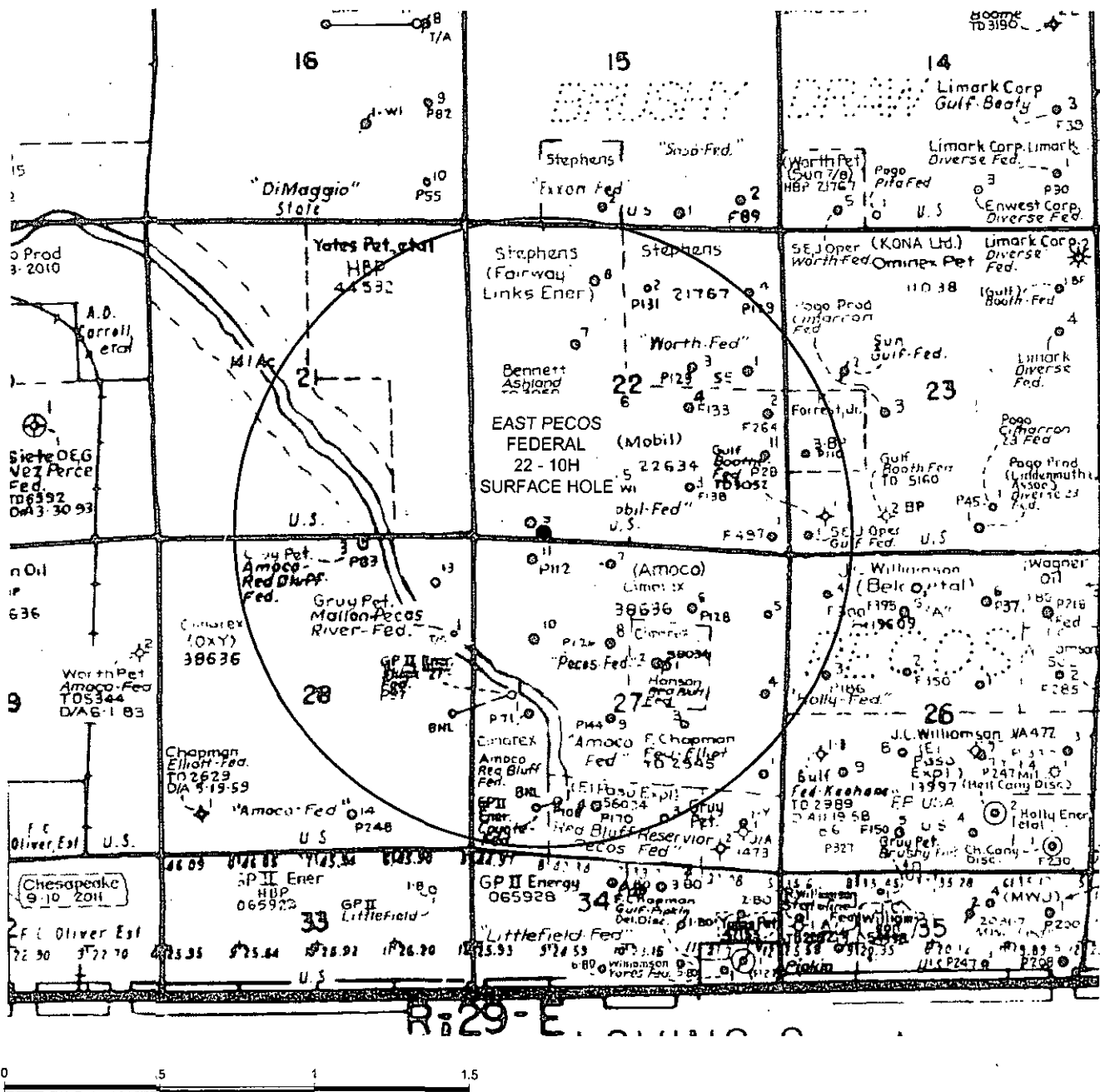


W T C, INC.
405 S.W. 1st Street
Andrews, TX 79714
(432) 523-2181



JOB No.: WTC51102

SURFACE HOLE LOCATION



SECTION 22, T. 26S, R. 29E, N.M.P.M.

COUNTY: EDDY STATE: NM

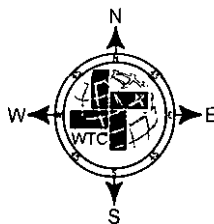
DESCRIPTION: 150' FSL & 1355' FWL

OPERATOR: RKI EXPLORATION & PRODUCTION

WELL NAME: EAST PECOS FEDERAL 22-10H SHL

DRIVING DIRECTIONS:

FROM THE INTERSECTION OF STATE HIGHWAY 285 AND LONGHORN COUNTY ROAD 725. GO EAST/ NORTHEAST ON LONGHORN COUNTY ROAD 725 FOR 6.7 MILES TO A "Y", STAY RIGHT. GO 0.3 MILE IN SOUTHWESTERLY DIRECTON. LOCATION FLAG IS 266 FEET SOUTHEAST.

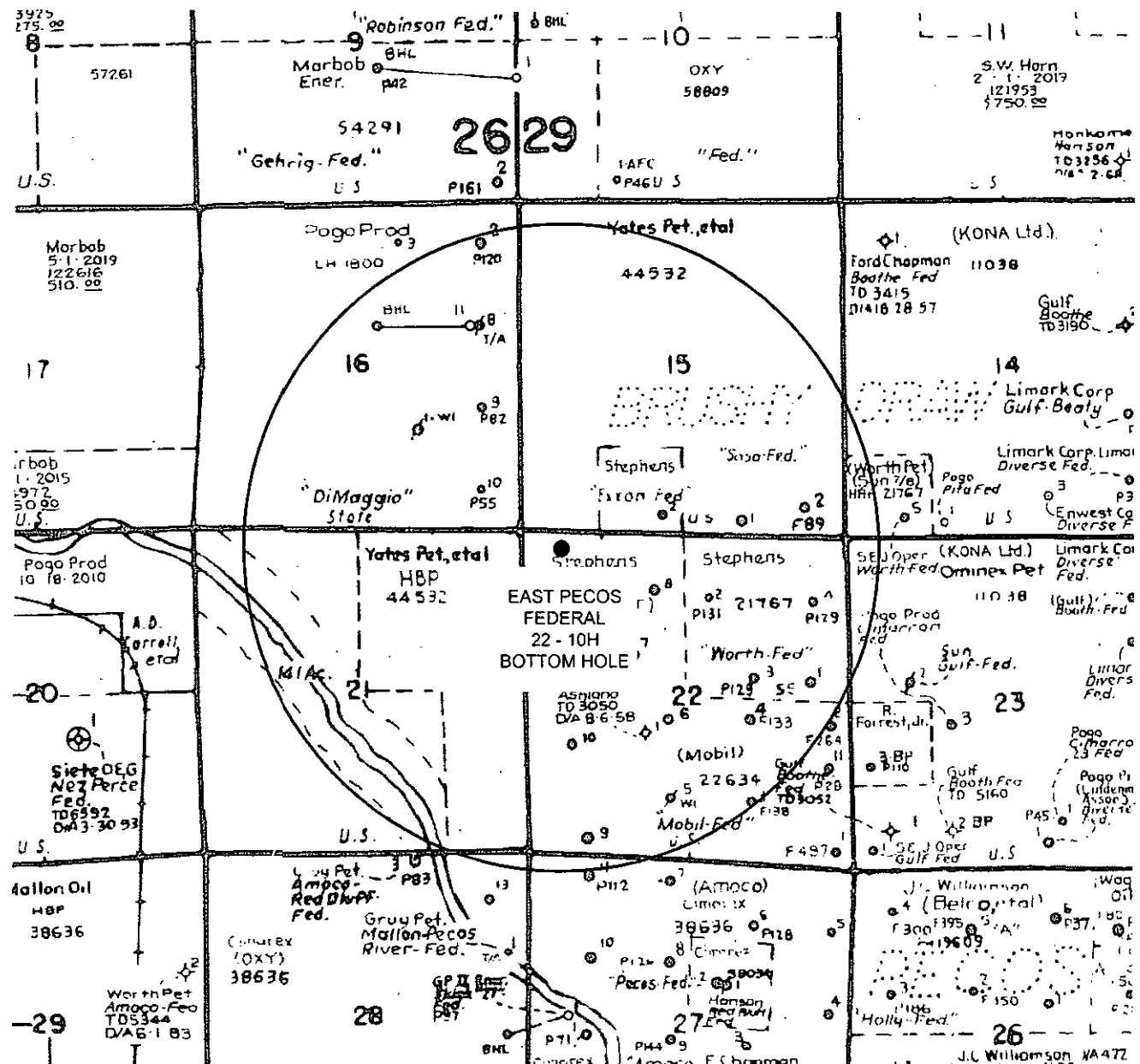


WTC, INC.
405 S.W. 1st Street
Andrews, TX 79714
(432) 623-2181



JOB No.: WTC51102

BOTTOM HOLE LOCATION



GRAPHIC SCALE 1" = 1/2 MILE

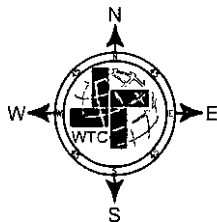
SECTION 22, T. 26S, R. 29E, N.M.P.M.

COUNTY: EDDY STATE: NM

DESCRIPTION: 230' FSL & 990' FWL

OPERATOR: RKI EXPLORATION & PRODUCTION

WELL NAME: EAST PECOS FEDERAL 22-10H BHL



DRIVING DIRECTIONS:

FROM THE INTERSECTION OF STATE HIGHWAY 285 AND LONGHORN COUNTY ROAD 725. GO EAST/ NORTHEAST ON LONGHORN COUNTY ROAD 725 FOR 6.7 MILES TO A "Y". STAY RIGHT. GO 0.3 MILE IN SOUTHWESTERLY DIRECTION. LOCATION FLAG IS 266 FEET SOUTHEAST.



WTC, INC.
405 S.W. 1st Street
Andrews, TX 79714
(432) 523-2181



JOB No.: WTC51102

Well East Pecos Federal 22-10H
 Location Surface: 150 FSL 1,355 FWL 22-26S-29E
 Bottom Hole: 230 FNL 990 FWL 22-26S-29E
 County Eddy
 State NM

1) The elevation of the unprepared ground is 2,879 feet above sea level.

2) The geologic name of the surface formation is Quaternary - Alluvium.

3) A rotary rig will be utilized to drill the well to 14,453 feet and run casing and cement.
 This equipment will then be rigged down and the well will be completed with a workover rig.

4) Proposed depth is 14,453 feet MD

5) Estimated tops:

	MD	TVD	
Rustler	950	950	
Salado	1,100	1,100	BHP = .44 psi/ft x depth
Lamar Lime	2,858	2,856	1,258 psi
Delaware Top	3,003	3,000	1,321 psi
Cherry Canyon Sand	3,932	3,928	Oil 1,730 psi
Bone Spring Lime	6,644	6,638	Oil 2,923 psi
Bone Spring 1st SS	7,549	7,543	Oil 3,322 psi
Bone Spring 2nd SS	8,360	8,354	3,678 psi
KOP	9,402	9,396	Oil 4,137 psi
Bone Spring 3rd SS	9,406	9,400	4,139 psi
Landing Point (Wolfcamp)	10,402	10,040	Oil 4,577 psi
TD	14,453	10,039	6,359 psi

6) Casing program:

Hole Size	Top	Bottom	OD Csg	Wt/Grade	Connection	Collapse Design Factor	Burst Design Factor	Tension Design Factor	
17 1/2"	0	1,000	13 3/8"	54.5#/J-55	ST&C		2.57	12.41	9.43
12 1/4"	0	6,644	9-5/8"	40#/L-80	LT&C		1.45	1.15	4.85
8-3/4"	-	14,453	5 1/2"	23#/P-110	BTC		2.51	1.26	2.01
Collapse	1.125								
Burst	1.0								
Tension	2.0								

7) Cement program:

Surface	17 1/2" hole			
Pipe OD	13 3/8"			
Setting Depth	1,000 ft			
Annular Volume	0.69462 cf/ft			
Excess	1		100 %	
Lead	794 sx	1.75 cf/sk	9.13 gal/sk	13.5 ppg
Tail	200 sx	1.33 cf/sk	6.32 gal/sk	14.8 ppg
Lead: "C" + 4% PF20 (gel) + 2% PF1 (CC) + .125 pps PF29 (CelloFlake) + .4 pps PF46 (antifoam)				
Tail: "C" + 1% PF1 (CC)				
Top of cement:		Surface		

Intermediate				
Pipe OD	9-5/8"			
Setting Depth	6,644 ft			
Annular Volume	0.3132 cf/ft	0.3627 cf/ft		1000 ft
Excess	0.35	35 %		
DV Tool Depth	5500 ft	Top of Cement		
Stage 1				
Lead:	327 sx	1.48 cf/sk	7.58 gal/sk	13.0 ppg
Lead: PVL + 1.3% PF44 + 5% PF174 + .5% PF606 + .35% PF813 + .1% PF153 + .4 pps PF46				
Top of cement:		DV tool		
Stage 2				
Lead:	1,143 sx	1.89 cf/sk	10.06 gal/sk	12.9 ppg
Tail:	175 sx	1.33 cf/sk	6.32 gal/sk	14.8 ppg
Lead: 35/65 Poz "C" + 5% PF44 + 6% PF20 + .2% PF13 + .125 ps PF29 + .4 pps PF46				
Tail: "C" + .2% PF13				
Top of cement:		Surface - ft		

Production	8-3/4" hole			
Pipe OD	5 1/2"			
Setting Depth	14,453 ft			
Annular Volume	0.2526			
Excess	0.32			
Lead:	1,482 sx	1.87 cf/sk	9.52 gal/sk	13.0 ppg
Lead: AcidSolid PVL + 5% PF174 + .7% PF606 + .2% PF153 + .5% PF13 + 30% PF151 + .4 pps PF46				
Top of cement:		6,144 ft		

8) Pressure control equipment:

The blowout preventer equipment (BOP) shown in Exhibit #1 will consist of a double ram type (5,000 psi WP) preventer, a bag-type annular preventer (5,000 psi WP), and rotating head. Both units will be hydraulically operated and the ram type preventer will be equipped with blind rams on top and pipe rams (sized to accommodate the drill pipe size being utilized) on bottom. A 13 3/8" SOW x 13 5/8" 5M casing head will be installed on the 13 3/8" casing and utilized until total depth is reached. All BOP and associated equipment will be tested to 5,000 psi and the annular will be tested to 1,500 psi after setting 13-3/8" casing string & 9 5/8" casing string. The 13 3/8" and 9 5/8" casing will be tested to .22 psi per ft of casing string length or 1500 psi whichever is greater, but not to exceed 70% of the minimum yield.

The 9 5/8" casing will be hung in the casing head and the stack will not be nipped down at this point.

The stack will not be isolated and tested after running the 9 5/8" casing, but will be tested along with the 9 5/8" casing. Pipe rams will be operated and checked each 24 hour period and each time the drill string is out of the hole.

These function test will be documented on the daily driller's log.

A drilling spool or blowout preventer with 2 side outlets (choke side shall be 3" minimum diameter, kill side shall be at least 2" diameter).

2 kill line valves and a check valve.

2 chokes on the manifold along with a pressure gauge, with one remotely controlled from rig floor.

Upper kelly cock valve with handle available.

Safety valve and subs to fit all drill string connections in use.

All BOP equipment connections subjected to pressure will be flanged, welded, or clamped.

Fill up line above the upper most preventer.

9) Mud program:

Top	Bottom	Mud Wt.	Vis	PV	YP	Fluid Loss	Type System
0	1,000	8.5 to 8.9	32 to 36	1 - 6	1 - 6	NC	Fresh Water
1,000	6,644	9.8 to 10.0	28 to 30	1 - 3	1 - 3	NC	Brine
6,644	14,453	9.6 to 10.2	35 to 40	20-22	8 - 10	<20	White Starch

10) Logging, coring, and testing program:

No drill stem test are planned

KOP to intermediate: CNL, Caliper, GR, DLL,

Intermediate to surface: CNL, GR

No coring is planned

11) Potential hazards:

No abnormal pressure or temperature is expected. No H2S is known to exist in the area.

Lost circulation can occur in, lost circulation material will be on location and readily available if needed.

12) Anticipated start date

ASAP

Duration

40 days