

District I  
1625 N. French Dr., Hobbs, NM 88240  
Phone: (575) 393-6161 Fax: (575) 393-0720  
District II  
811 S. First St., Artesia, NM 88210  
Phone: (575) 748-1283 Fax: (575) 748-9720  
District III  
1000 Rio Brazos Road, Aztec, NM 87410  
Phone: (505) 334-6178 Fax: (505) 334-6170  
District IV  
1220 S. St. Francis Dr., Santa Fe, NM 87505  
Phone: (505) 476-3460 Fax: (505) 476-3462

State of New Mexico  
Energy, Minerals & Natural Resources  
Department  
OIL CONSERVATION DIVISION  
1220 South St. Francis Dr.  
Santa Fe, NM 87505

FORM C-102

Revised August 1, 2011

Submit one copy to appropriate

District Office

RECEIVED

☐ AMENDED REPORT

WELL LOCATION AND ACREAGE DEDICATION PLAT

|   |  |   |
|---|--|---|
| <sup>1</sup> API Number<br>30-015-43317 | <sup>2</sup> Pool Code<br>96712                          | <sup>3</sup> Pool Name<br>PIERCE CROSSING; WOLFCAMP, NW (GAS) |
| <sup>4</sup> Property Code<br>314750    | <sup>5</sup> Property Name<br>JANIE CONNER 13-24S-28E RB | <sup>6</sup> Well Number<br>#204H                             |
| <sup>7</sup> OGRID No.<br>228937        | <sup>8</sup> Operator Name<br>MATADOR PRODUCTION COMPANY | <sup>9</sup> Elevation<br>2978'                               |

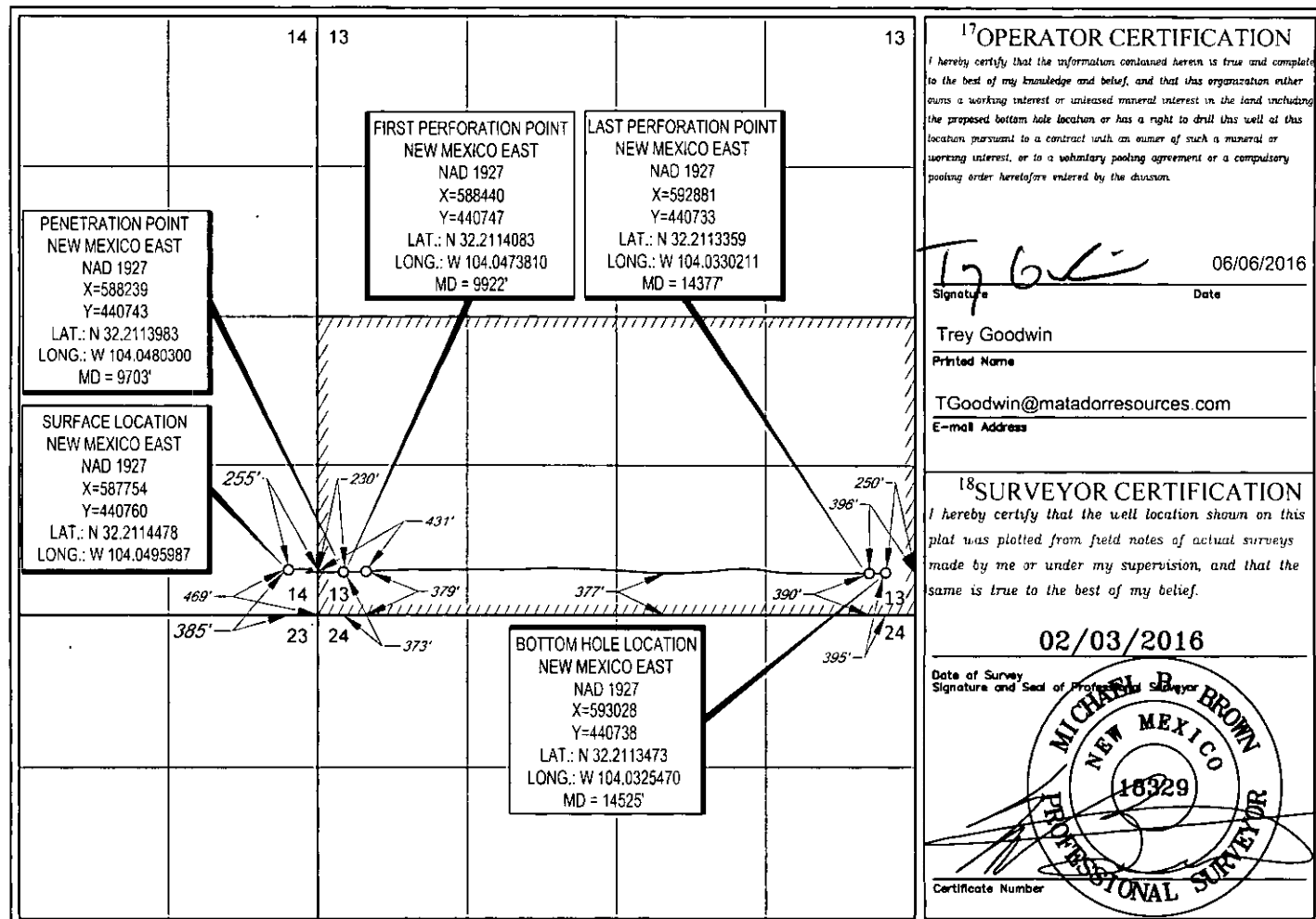
<sup>10</sup>Surface Location

| UL or lot no. | Section | Township | Range | Lot Idn | Feet from the | North/South line | Feet from the | East/West line | County |
|---------------|---------|----------|-------|---------|---------------|------------------|---------------|----------------|--------|
| P             | 14      | 24-S     | 28-E  | -       | 385'          | SOUTH            | 255'          | EAST           | EDDY   |

| UL or lot no. | Section | Township | Range | Lot Idn | Feet from the | North/South line | Feet from the | East/West line | County |
|---------------|---------|----------|-------|---------|---------------|------------------|---------------|----------------|--------|
| P             | 13      | 24-S     | 28-E  | -       | 395'          | SOUTH            | 250'          | EAST           | EDDY   |

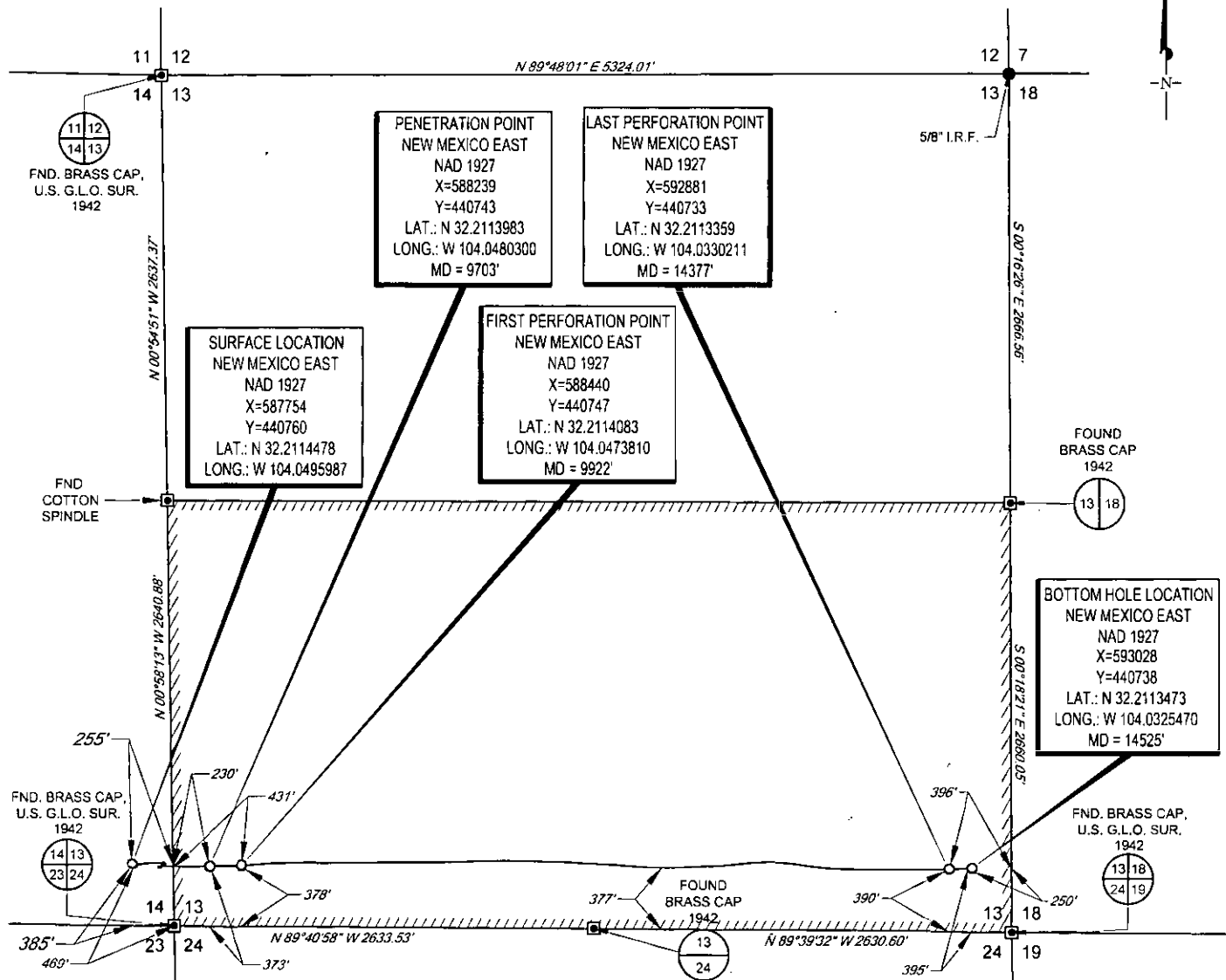
|                                      |                               |                                  |                         |
|--------------------------------------|-------------------------------|----------------------------------|-------------------------|
| <sup>12</sup> Dedicated Acres<br>320 | <sup>13</sup> Joint or Infill | <sup>14</sup> Consolidation Code | <sup>15</sup> Order No. |
|--------------------------------------|-------------------------------|----------------------------------|-------------------------|

No allowable will be assigned to this completion until all interests have been consolidated or a non-standard unit has been approved by the division.

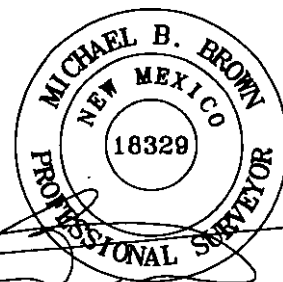


SCALE: 1" = 1000'  
0' 500' 1000'

SECTION 14, TOWNSHIP 24-S, RANGE 28-E, N.M.P.M.  
EDDY COUNTY, NEW MEXICO



LEASE NAME & WELL NO.: JANIE CONNER 13-24S-28E RB #204H  
SECTION 14 TWP 24-S RGE 28-E SURVEY N.M.P.M.  
COUNTY EDDY STATE NM ELEVATION 2978'  
DESCRIPTION 385' FSL & 255' FEL



Michael Blake Brown, P.S. No. 18329  
MAY 25, 2016



**TOPOGRAPHIC**  
LOYALTY INNOVATION LEGACY  
1400 EVERMAN PARKWAY, Ste. 197 • FT. WORTH, TEXAS 76140  
TELEPHONE: (817) 744-7512 • FAX (817) 744-7548  
2903 NORTH BIG SPRING • MIDLAND, TEXAS 79705  
TELEPHONE: (432) 882-1653 OR (800) 767-1653 • FAX (432) 882-1743  
WWW.TOPOGRAPHIC.COM

|   |           |
|---|-----------|
| JANIE CONNER<br>13-24S-28E RB #204H<br>AS-COMPLETED | REVISION: |
| DATE: 05/25/16                                      |           |
| FILE: AD_JANIE_CONNER_13-24S-28E_RB_204H            |           |
| DRAWN BY: R.M.                                      |           |
| SHEET: 1 OF 1                                       |           |

NOTES:

1. ORIGINAL DOCUMENT SIZE: 8 1/2" X 11"
2. ALL BEARINGS, DISTANCES, AND COORDINATE VALUES CONTAINED HEREIN ARE GRID BASED UPON THE NEW MEXICO STATE PLANE COORDINATE SYSTEM, EAST ZONE, U.S. SURVEY FEET, NORTH AMERICAN DATUM 1927.
3. CERTIFICATION IS MADE ONLY TO THE LOCATION OF THIS EASEMENT, IN RELATION TO THE EVIDENCE FOUND DURING A FIELD SURVEY, MADE ON THE GROUND, UNDER MY SUPERVISION, AND USING DOCUMENTATION PROVIDED BY MATADOR PRODUCTION COMPANY. ONLY UTILITIES/EASEMENTS THAT WERE VISIBLE ON THE DATE OF THIS SURVEY, WITHIN/ADJOINING THIS EASEMENT, HAVE BEEN LOCATED AS SHOWN HEREON OF WHICH I HAVE KNOWLEDGE. THIS CERTIFICATION IS LIMITED TO THOSE PERSONS OR ENTITIES SHOWN ON THE FACE OF THIS PLAT AND IS NON-TRANSFERABLE, AND MADE FOR THIS TRANSACTION ONLY.