

NM OIL CONSERVATION

ARTESIA DISTRICT

District I

1625 N. French Dr., Hobbs, NM 88240
Phone: (575) 393-6161 Fax: (575) 393-0720

District II

811 S. First St., Artesia, NM 88210
Phone: (575) 748-1283 Fax: (575) 748-9720

District III

1000 Rio Brazos Road, Aztec, NM 87410
Phone: (505) 334-6178 Fax: (505) 334-6170

District IV

1220 S. St. Francis Dr., Santa Fe, NM 87505
Phone: (505) 476-3460 Fax: (505) 476-3462

State of New Mexico

Energy, Minerals & Natural Resources Department

OIL CONSERVATION DIVISION

1220 South St. Francis Dr.

Santa Fe, NM 87505

JUL 25 2016

Form C-102

Revised August 1, 2011

RECEIVED

Submit one copy to appropriate

District Office

☐ AMENDED REPORT

WELL LOCATION AND ACREAGE DEDICATION PLAT

¹ API Number 30-015-43187		² Pool Code 96641		³ Pool Name Paduca; Bone Spring	
⁴ Property Code 314983		⁵ Property Name BELGIAN 15 FED COM			⁶ Well Number 1H
⁷ OGRID No. 6137		⁸ Operator Name DEVON ENERGY PRODUCTION COMPANY, L.P.			⁹ Elevation 3362.9

¹⁰ Surface Location

UL or lot no.	Section	Township	Range	Lot Idn	Feet from the	North/South line	Feet from the	East/West line	County
O	15	25 S	31 E		14	SOUTH	1610	EAST	EDDY

¹¹ Bottom Hole Location If Different From Surface

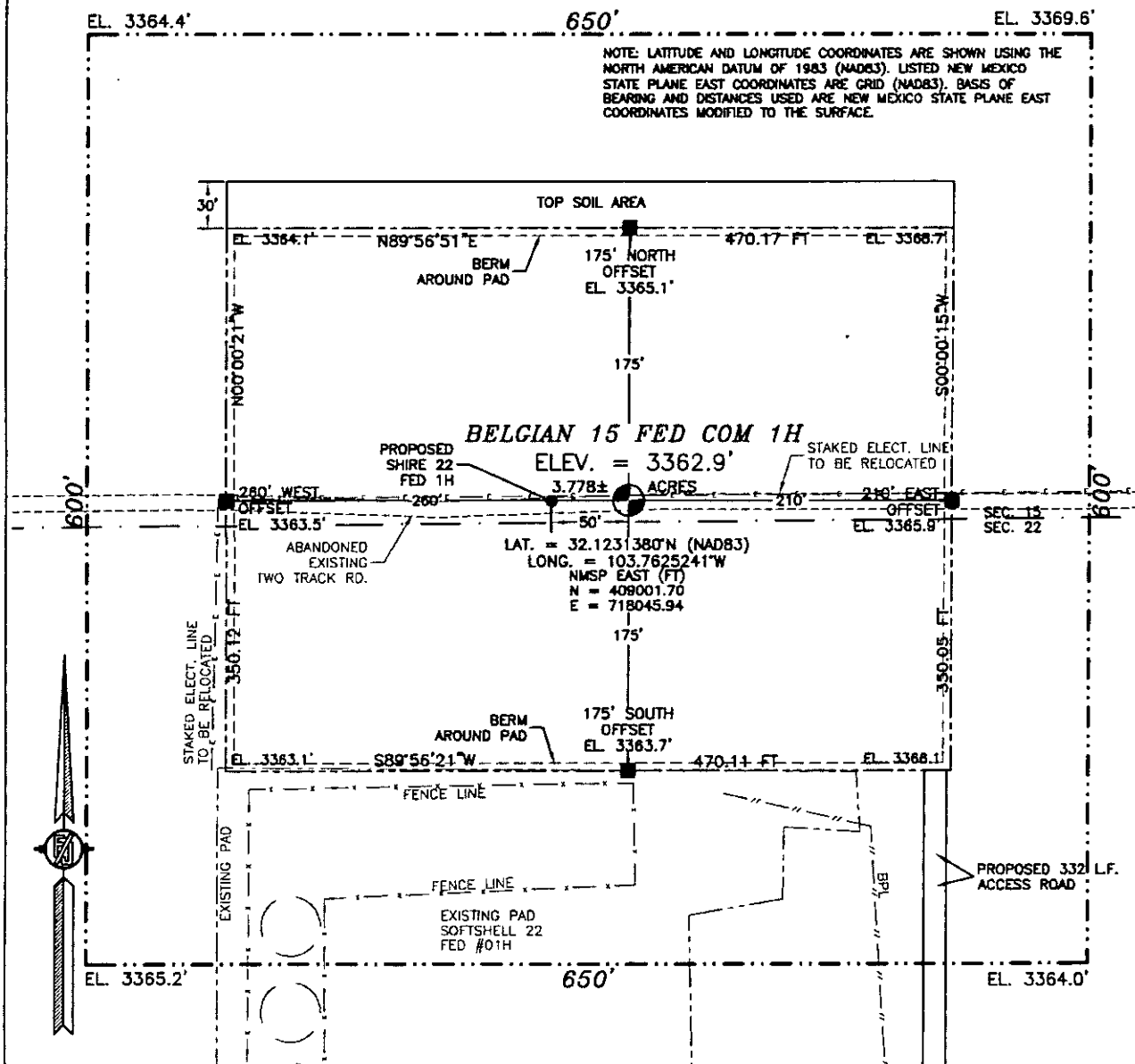
UL or lot no.	Section	Township	Range	Lot Idn	Feet from the	North/South line	Feet from the	East/West line	County
B	15	25 S	31 E		268	NORTH	2000	EAST	EDDY

¹² Dedicated Acres	¹³ Joint or Infill	¹⁴ Consolidation Code	¹⁵ Order No.
160			

No allowable will be assigned to this completion until all interests have been consolidated or a non-standard unit has been approved by the division.

<p>N89°42'57"E 2652.44 FT</p> <p>NW CORNER SEC. 15 LAT. = 32.1376857°N LONG. = 103.7743767°W</p> <p>NMSP EAST (FT) N = 414274.67 E = 714349.16</p>		<p>N89°37'34"E 2664.18 FT</p> <p>N/4 CORNER SEC. 15 LAT. = 32.1376837°N LONG. = 103.7658094°W</p> <p>NMSP EAST (FT) N = 414287.82 E = 717000.99</p>		<p>268' BOTTOM OF HOLE</p> <p>2000'</p> <p>NE CORNER SEC. 15 LAT. = 32.1376926°N LONG. = 103.7572043°W</p> <p>NMSP EAST (FT) N = 414305.21 E = 719664.53</p>	
<p>W/4 CORNER SEC. 15 SCALED</p>		<p>NOTE: LATITUDE AND LONGITUDE COORDINATES ARE SHOWN USING THE NORTH AMERICAN DATUM OF 1983 (NAD83). LISTED NEW MEXICO STATE PLANE EAST COORDINATES ARE GRID (NAD83). BASIS OF BEARING AND DISTANCES USED ARE NEW MEXICO STATE PLANE EAST COORDINATES MODIFIED TO THE SURFACE.</p>		<p>E/4 CORNER SEC. 15 LAT. = 32.1304013°N LONG. = 103.7572709°W</p> <p>NMSP EAST (FT) N = 411652.64 E = 719658.11</p>	
<p>W/4 CORNER SEC. 15 SCALED</p>		<p>268' BOTTOM OF HOLE</p> <p>2000'</p> <p>NE CORNER SEC. 15 LAT. = 32.1376926°N LONG. = 103.7572043°W</p> <p>NMSP EAST (FT) N = 414305.21 E = 719664.53</p>		<p>E/4 CORNER SEC. 15 LAT. = 32.1304013°N LONG. = 103.7572709°W</p> <p>NMSP EAST (FT) N = 411652.64 E = 719658.11</p>	
<p>W/4 CORNER SEC. 15 SCALED</p>		<p>268' BOTTOM OF HOLE</p> <p>2000'</p> <p>NE CORNER SEC. 15 LAT. = 32.1376926°N LONG. = 103.7572043°W</p> <p>NMSP EAST (FT) N = 414305.21 E = 719664.53</p>		<p>E/4 CORNER SEC. 15 LAT. = 32.1304013°N LONG. = 103.7572709°W</p> <p>NMSP EAST (FT) N = 411652.64 E = 719658.11</p>	
<p>W/4 CORNER SEC. 15 SCALED</p>		<p>268' BOTTOM OF HOLE</p> <p>2000'</p> <p>NE CORNER SEC. 15 LAT. = 32.1376926°N LONG. = 103.7572043°W</p> <p>NMSP EAST (FT) N = 414305.21 E = 719664.53</p>		<p>E/4 CORNER SEC. 15 LAT. = 32.1304013°N LONG. = 103.7572709°W</p> <p>NMSP EAST (FT) N = 411652.64 E = 719658.11</p>	
<p>W/4 CORNER SEC. 15 SCALED</p>		<p>268' BOTTOM OF HOLE</p> <p>2000'</p> <p>NE CORNER SEC. 15 LAT. = 32.1376926°N LONG. = 103.7572043°W</p> <p>NMSP EAST (FT) N = 414305.21 E = 719664.53</p>		<p>E/4 CORNER SEC. 15 LAT. = 32.1304013°N LONG. = 103.7572709°W</p> <p>NMSP EAST (FT) N = 411652.64 E = 719658.11</p>	
<p>W/4 CORNER SEC. 15 SCALED</p>		<p>268' BOTTOM OF HOLE</p> <p>2000'</p> <p>NE CORNER SEC. 15 LAT. = 32.1376926°N LONG. = 103.7572043°W</p> <p>NMSP EAST (FT) N = 414305.21 E = 719664.53</p>		<p>E/4 CORNER SEC. 15 LAT. = 32.1304013°N LONG. = 103.7572709°W</p> <p>NMSP EAST (FT) N = 411652.64 E = 719658.11</p>	
<p>W/4 CORNER SEC. 15 SCALED</p>		<p>268' BOTTOM OF HOLE</p> <p>2000'</p> <p>NE CORNER SEC. 15 LAT. = 32.1376926°N LONG. = 103.7572043°W</p> <p>NMSP EAST (FT) N = 414305.21 E = 719664.53</p>		<p>E/4 CORNER SEC. 15 LAT. = 32.1304013°N LONG. = 103.7572709°W</p> <p>NMSP EAST (FT) N = 411652.64 E = 719658.11</p>	
<p>W/4 CORNER SEC. 15 SCALED</p>		<p>268' BOTTOM OF HOLE</p> <p>2000'</p> <p>NE CORNER SEC. 15 LAT. = 32.1376926°N LONG. = 103.7572043°W</p> <p>NMSP EAST (FT) N = 414305.21 E = 719664.53</p>		<p>E/4 CORNER SEC. 15 LAT. = 32.1304013°N LONG. = 103.7572709°W</p> <p>NMSP EAST (FT) N = 411652.64 E = 719658.11</p>	
<p>W/4 CORNER SEC. 15 SCALED</p>		<p>268' BOTTOM OF HOLE</p> <p>2000'</p> <p>NE CORNER SEC. 15 LAT. = 32.1376926°N LONG. = 103.7572043°W</p> <p>NMSP EAST (FT) N = 414305.21 E = 719664.53</p>		<p>E/4 CORNER SEC. 15 LAT. = 32.1304013°N LONG. = 103.7572709°W</p> <p>NMSP EAST (FT) N = 411652.64 E = 719658.11</p>	
<p>W/4 CORNER SEC. 15 SCALED</p>		<p>268' BOTTOM OF HOLE</p> <p>2000'</p> <p>NE CORNER SEC. 15 LAT. = 32.1376926°N LONG. = 103.7572043°W</p> <p>NMSP EAST (FT) N = 414305.21 E = 719664.53</p>		<p>E/4 CORNER SEC. 15 LAT. = 32.1304013°N LONG. = 103.7572709°W</p> <p>NMSP EAST (FT) N = 411652.64 E = 719658.11</p>	
<p>W/4 CORNER SEC. 15 SCALED</p>		<p>268' BOTTOM OF HOLE</p> <p>2000'</p> <p>NE CORNER SEC. 15 LAT. = 32.1376926°N LONG. = 103.7572043°W</p> <p>NMSP EAST (FT) N = 414305.21 E = 719664.53</p>		<p>E/4 CORNER SEC. 15 LAT. = 32.1304013°N LONG. = 103.7572709°W</p> <p>NMSP EAST (FT) N = 411652.64 E = 719658.11</p>	
<p>W/4 CORNER SEC. 15 SCALED</p>		<p>268' BOTTOM OF HOLE</p> <p>2000'</p> <p>NE CORNER SEC. 15 LAT. = 32.1376926°N LONG. = 103.7572043°W</p> <p>NMSP EAST (FT) N = 414305.21 E = 719664.53</p>		<p>E/4 CORNER SEC. 15 LAT. = 32.1304013°N LONG. = 103.7572709°W</p> <p>NMSP EAST (FT) N = 411652.64 E = 719658.11</p>	
<p>W/4 CORNER SEC. 15 SCALED</p>		<p>268' BOTTOM OF HOLE</p> <p>2000'</p> <p>NE CORNER SEC. 15 LAT. = 32.1376926°N LONG. = 103.7572043°W</p> <p>NMSP EAST (FT) N = 414305.21 E = 719664.53</p>		<p>E/4 CORNER SEC. 15 LAT. = 32.1304013°N LONG. = 103.7572709°W</p> <p>NMSP EAST (FT) N = 411652.64 E = 719658.11</p>	
<p>W/4 CORNER SEC. 15 SCALED</p>		<p>268' BOTTOM OF HOLE</p> <p>2000'</p> <p>NE CORNER SEC. 15 LAT. = 32.1376926°N LONG. = 103.7572043°W</p> <p>NMSP EAST (FT) N = 414305.21 E = 719664.53</p>		<p>E/4 CORNER SEC. 15 LAT. = 32.1304013°N LONG. = 103.7572709°W</p> <p>NMSP EAST (FT) N = 411652.64 E = 719658.11</p>	
<p>W/4 CORNER SEC. 15 SCALED</p>		<p>268' BOTTOM OF HOLE</p> <p>2000'</p> <p>NE CORNER SEC. 15 LAT. = 32.1376926°N LONG. = 103.7572043°W</p> <p>NMSP EAST (FT) N = 414305.21 E = 719664.53</p>		<p>E/4 CORNER SEC. 15 LAT. = 32.1304013°N LONG. = 103.7572709°W</p> <p>NMSP EAST (FT) N = 411652.64 E = 719658.11</p>	
<p>W/4 CORNER SEC. 15 SCALED</p>		<p>268' BOTTOM OF HOLE</p> <p>2000'</p> <p>NE CORNER SEC. 15 LAT. = 32.1376926°N LONG. = 103.7572043°W</p> <p>NMSP EAST (FT) N = 414305.21 E = 719664.53</p>		<p>E/4 CORNER SEC. 15 LAT. = 32.1304013°N LONG. = 103.7572709°W</p> <p>NMSP EAST (FT) N = 411652.64 E = 719658.11</p>	
<p>W/4 CORNER SEC. 15 SCALED</p>		<p>268' BOTTOM OF HOLE</p> <p>2000'</p> <p>NE CORNER SEC. 15 LAT. = 32.1376926°N LONG. = 103.7572043°W</p> <p>NMSP EAST (FT) N = 414305.21 E = 719664.53</p>		<p>E/4 CORNER SEC. 15 LAT. = 32.1304013°N LONG. = 103.7572709°W</p> <p>NMSP EAST (FT) N = 411652.64 E = 719658.11</p>	
<p>W/4 CORNER SEC. 15 SCALED</p>		<p>268' BOTTOM OF HOLE</p> <p>2000'</p> <p>NE CORNER SEC. 15 LAT. = 32.1376926°N LONG. = 103.7572043°W</p> <p>NMSP EAST (FT) N = 414305.21 E = 719664.53</p>		<p>E/4 CORNER SEC. 15 LAT. = 32.1304013°N LONG. = 103.7572709°W</p> <p>NMSP EAST (FT) N = 411652.64 E = 719658.11</p>	
<p>W/4 CORNER SEC. 15 SCALED</p>		<p>268' BOTTOM OF HOLE</p> <p>2000'</p> <p>NE CORNER SEC. 15 LAT. = 32.1376926°N LONG. = 103.7572043°W</p> <p>NMSP EAST (FT) N = 414305.21 E = 719664.53</p>		<p>E/4 CORNER SEC. 15 LAT. = 32.1304013°N LONG. = 103.7572709°W</p> <p>NMSP EAST (FT) N = 411652.64 E = 719658.11</p>	
<p>W/4 CORNER SEC. 15 SCALED</p>		<p>268' BOTTOM OF HOLE</p> <p>2000'</p> <p>NE CORNER SEC. 15 LAT. = 32.1376926°N LONG. = 103.7572043°W</p> <p>NMSP EAST (FT) N = 414305.21 E = 719664.53</p>		<p>E/4 CORNER SEC. 15 LAT. = 32.1304013°N LONG. = 103.7572709°W</p> <p>NMSP EAST (FT) N = 411652.64 E = 719658.11</p>	
<p>W/4 CORNER SEC. 15 SCALED</p>		<p>268' BOTTOM OF HOLE</p> <p>2000'</p> <p>NE CORNER SEC. 15 LAT. = 32.1376926°N LONG. = 103.7572043°W</p> <p>NMSP EAST (FT) N = 414305.21 E = 719664.53</p>		<p>E/4 CORNER SEC. 15 LAT. = 32.1304013°N LONG. = 103.7572709°W</p> <p>NMSP EAST (FT) N = 411652.64 E = 719658.11</p>	
<p>W/4 CORNER SEC. 15 SCALED</p>		<p>268' BOTTOM OF HOLE</p> <p>2000'</p> <p>NE CORNER SEC. 15 LAT. = 32.1376926°N LONG. = 103.7572043°W</p> <p>NMSP EAST (FT) N = 414305.21 E = 719664.53</p>		<p>E/4 CORNER SEC. 15 LAT. = 32.1304013°N LONG. = 103.7572709°W</p> <p>NMSP EAST (FT) N = 411652.64 E = 719658.11</p>	
<p>W/4 CORNER SEC. 15 SCALED</p>		<p>268' BOTTOM OF HOLE</p> <p>2000'</p> <p>NE CORNER SEC. 15 LAT. = 32.1376926°N LONG. = 103.7572043°W</p> <p>NMSP EAST (FT) N = 414305.21 E = 719664.53</p>		<p>E/4 CORNER SEC. 15 LAT. = 32.1304013°N LONG. = 103.7572709°W</p> <p>NMSP EAST (FT) N = 411652.64 E = 719658.11</p>	
<p>W/4 CORNER SEC. 15 SCALED</p>		<p>268' BOTTOM OF HOLE</p> <p>2000'</p> <p>NE CORNER SEC. 15 LAT. = 32.1376926°N LONG. = 103.7572043°W</p> <p>NMSP EAST (FT) N = 414305.21 E = 719664.53</p>		<p>E/4 CORNER SEC. 15 LAT. = 32.1304013°N LONG. = 103.7572709°W</p> <p>NMSP EAST (FT) N = 411652.64 E = 719658.11</p>	
<p>W/4 CORNER SEC. 15 SCALED</p>		<p>268' BOTTOM OF HOLE</p> <p>2000'</p> <p>NE CORNER SEC. 15 LAT. = 32.1376926°N LONG. = 103.7572043°W</p> <p>NMSP EAST (FT) N = 414305.21 E = 719664.53</p>		<p>E/4 CORNER SEC. 15 LAT. = 32.1304013°N LONG. = 103.7572709°W</p> <p>NMSP EAST (FT) N = 411652.64 E = 719658.11</p>	
<p>W/4 CORNER SEC. 15 SCALED</p>		<p>268' BOTTOM OF HOLE</p> <p>2000'</p> <p>NE CORNER SEC. 15 LAT. = 32.1376926°N LONG. = 103.7572043°W</p> <p>NMSP EAST (FT) N = 414305.21 E = 719664.53</p>		<p>E/4 CORNER SEC. 15 LAT. = 32.1304013°N LONG. = 103.7572709°W</p> <p>NMSP EAST (FT) N = 411652.64 E = 719658.11</p>	
<p>W/4 CORNER SEC. 15 SCALED</p>		<p>268' BOTTOM OF HOLE</p> <p>2000'</p> <p>NE CORNER SEC. 15 LAT. = 32.1376926°N LONG. = 103.7572043°W</p> <p>NMSP EAST (FT) N = 414305.21 E = 719664.53</p>		<p>E/4 CORNER SEC. 15 LAT. = 32.1304013°N LONG. = 103.7572709°W</p> <p>NMSP EAST (FT) N = 411652.64 E = 719658.11</p>	
<p>W/4 CORNER SEC. 15 SCALED</p>		<p>268' BOTTOM OF HOLE</p> <p>2000'</p> <p>NE CORNER SEC. 15 LAT. = 32.1376926°N LONG. = 103.7572043°W</p> <p>NMSP EAST (FT) N = 414305.21 E = 719664.53</p>		<p>E/4 CORNER SEC. 15 LAT. = 32.1304013°N LONG. = 103.7572709°W</p> <p>NMSP EAST (FT) N = 411652.64 E = 719658.11</p>	
<p>W/4 CORNER SEC. 15 SCALED</p>		<p>268' BOTTOM OF HOLE</p> <p>2000'</p> <p>NE CORNER SEC. 15 LAT. = 32.1376926°N LONG. = 103.7572043°W</p> <p>NMSP EAST (FT) N = 414305.21 E = 719664.53</p>		<p>E/4 CORNER SEC. 15 LAT. = 32.1304013°N LONG. = 103.7572709°W</p> <p>NMSP EAST (FT) N = 411652.64 E = 719658.11</p>	
<p>W/4 CORNER SEC. 15 SCALED</p>		<p>268' BOTTOM OF HOLE</p> <p>2000'</p> <p>NE CORNER SEC. 15 LAT. = 32.1376926°N LONG. = 103.7572043°W</p> <p>NMSP EAST (FT) N = 414305.21 E = 719664.53</p>		<p>E/4 CORNER SEC. 15 LAT. = 32.1304013°N LONG. = 103.7572709°W</p> <p>NMSP EAST (FT) N = 411652.64 E = 719658.11</p>	
<p>W/4 CORNER SEC. 15 SCALED</p>		<p>268' BOTTOM OF HOLE</p> <p>2000'</p> <p>NE CORNER SEC. 15 LAT. = 32.1376926°N LONG. = 103.7572043°W</p> <p>NMSP EAST (FT) N = 414305.21 E = 719664.53</p>		<p>E/4 CORNER SEC. 15 LAT. = 32.1304013°N LONG. = 103.7572709°W</p> <p>NMSP EAST (FT) N = 411652.64 E = 719658.11</p>	
<p>W/4 CORNER SEC. 15 SCALED</p>		<p>268' BOTTOM OF HOLE</p> <p>2000'</p> <p>NE CORNER SEC. 15 LAT. = 32.1376926°N LONG. = 103.7572043°W</p> <p>NMSP EAST (FT) N = 414305.21 E = 719664.53</p>		<p>E/4 CORNER SEC. 15 LAT. = 32.1304013°N LONG. = 103.7572709°W</p> <p>NMSP EAST (FT) N = 411652.64 E = 719658.11</p>	
<p>W/4 CORNER SEC. 15 SCALED</p>		<p>268' BOTTOM OF HOLE</p> <p>2000'</p> <p>NE CORNER SEC. 15 LAT. = 32.1376926°N LONG. = 103.7572043°W</p> <p>NMSP EAST (FT) N = 414305.21 E = 719664.53</p>		<p>E/4 CORNER SEC. 15 LAT. = 32.1304013°N LONG. = 103.7572709°W</p> <p>NMSP EAST (FT) N = 411652.64 E = 719658.11</p>	
<p>W/4 CORNER SEC. 15 SCALED</p>		<p>268' BOTTOM OF HOLE</p> <p>2000'</p> <p>NE CORNER SEC. 15 LAT. = 32.1376926°N LONG. = 103.7572043°W</p> <p>NMSP EAST (FT) N = 414305.21 E = 719664.53</p>		<p>E/4 CORNER SEC. 15 LAT. = 32.1304013°N LONG. = 103.7572709°W</p> <p>NMSP EAST (FT) N = 411652.64 E = 719658.11</p>	
<p>W/4 CORNER SEC. 15 SCALED</p>		<p>268' BOTTOM OF HOLE</p> <p>2000'</p> <p>NE CORNER SEC. 15 LAT. = 32.1376926°N LONG. = 103.7572043°W</p> <p>NMSP EAST (FT) N = 414305.21 E = 719664.53</p>		<p>E/4 CORNER SEC. 15 LAT. = 32.1304013°N LONG. = 103.7572709°W</p> <p>NMSP EAST (FT) N = 411652.64 E = 719658.11</p>	
<p>W/4 CORNER SEC. 15 SCALED</p>		<p>268' BOTTOM OF HOLE</p> <p>2000'</p> <p>NE CORNER SEC. 15 LAT. = 32.1376926°N LONG. = 103.7572043°W</p> <p>NMSP EAST (FT) N = 414305.21 E = 719664.53</p>		<p>E/4 CORNER SEC. 15 LAT. = 32.1304013°N LONG. = 103.7572709°W</p> <p>NMSP EAST (FT) N = 411652.64 E = 719658.11</p>	
<p>W/4 CORNER SEC. 15 SCALED</p>		<p>268' BOTTOM OF HOLE</p> <p>2000'</p> <p>NE CORNER SEC. 15 LAT. = 32.1376926°N LONG. = 103.7572043°W</p> <p>NMSP EAST (FT) N = 414305.21 E = 719664.53</p>		<p>E/4 CORNER SEC. 15 LAT. = 32.1304013°N LONG. = 103.</p>	

**SECTION 15, TOWNSHIP 25 SOUTH, RANGE 31 EAST, N.M.P.M.
EDDY COUNTY, STATE OF NEW MEXICO
SITE MAP**



010 50 100 200

SCALE 1" = 100'

DIRECTIONS TO LOCATION

FROM THE INTERSECTION OF NM HIGHWAY 128 (JAL HWY) AND ORLA ROAD (CR-1) GO SOUTH ON ORLA ROAD 8.2 MILES TO MONSANTO ROAD ON RIGHT GO WEST ON MONSANTO ROAD 2.0 MILES TO ROAD INTERSECTION GO NORTH (RIGHT) 2.8 MILES TO ROAD INTERSECTION NORTH, SOUTH & SOUTHWEST GO SOUTHWEST 1.35 MILES ABOUT 200'± PAST A CATTLE GUARD TURN RIGHT OVER ANOTHER CATTLE GUARD GO WEST 0.25 MILES ON RIGHT FOLLOW FLAGS 332 L.F. NORTH TO SOUTHEAST CORNER OF PAD

DEVON ENERGY PRODUCTION COMPANY, L.P.

BELGIAN 15 FED COM 1H

**LOCATED 14 FT. FROM THE SOUTH LINE
AND 1610 FT. FROM THE EAST LINE OF
SECTION 15, TOWNSHIP 25 SOUTH,
RANGE 31 EAST, N.M.P.M.
EDDY COUNTY, STATE OF NEW MEXICO**

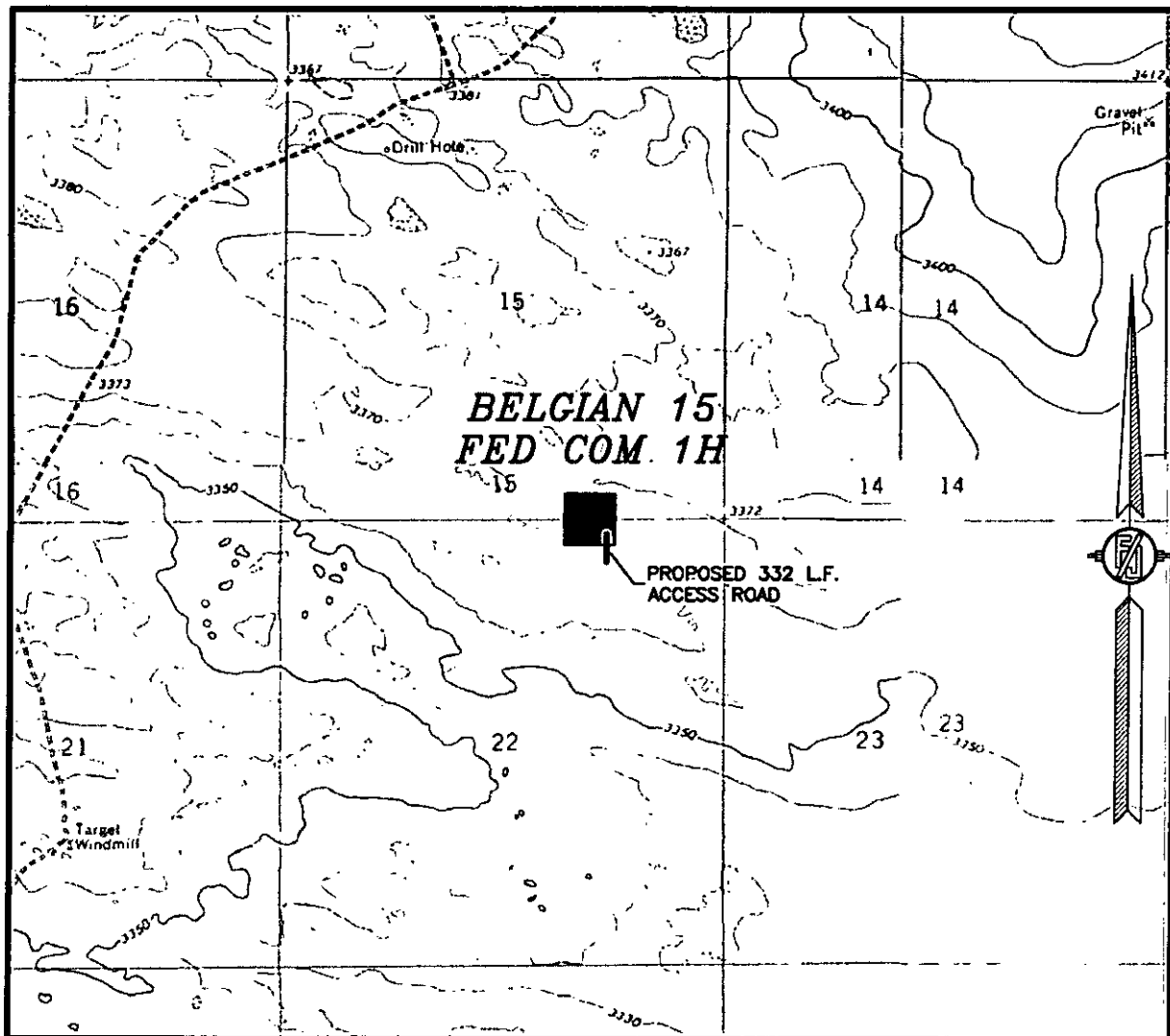
AUGUST 20, 2014

SURVEY NO. 3183

MADRON SURVEYING, INC. 301 SOUTH CANAL (575) 234-3341

CARLSBAD, NEW MEXICO

SECTION 15, TOWNSHIP 25 SOUTH, RANGE 31 EAST, N.M.P.M.
EDDY COUNTY, STATE OF NEW MEXICO
LOCATION VERIFICATION MAP



USGS QUAD MAP:
BIG SINKS
PHANTOM BANKS

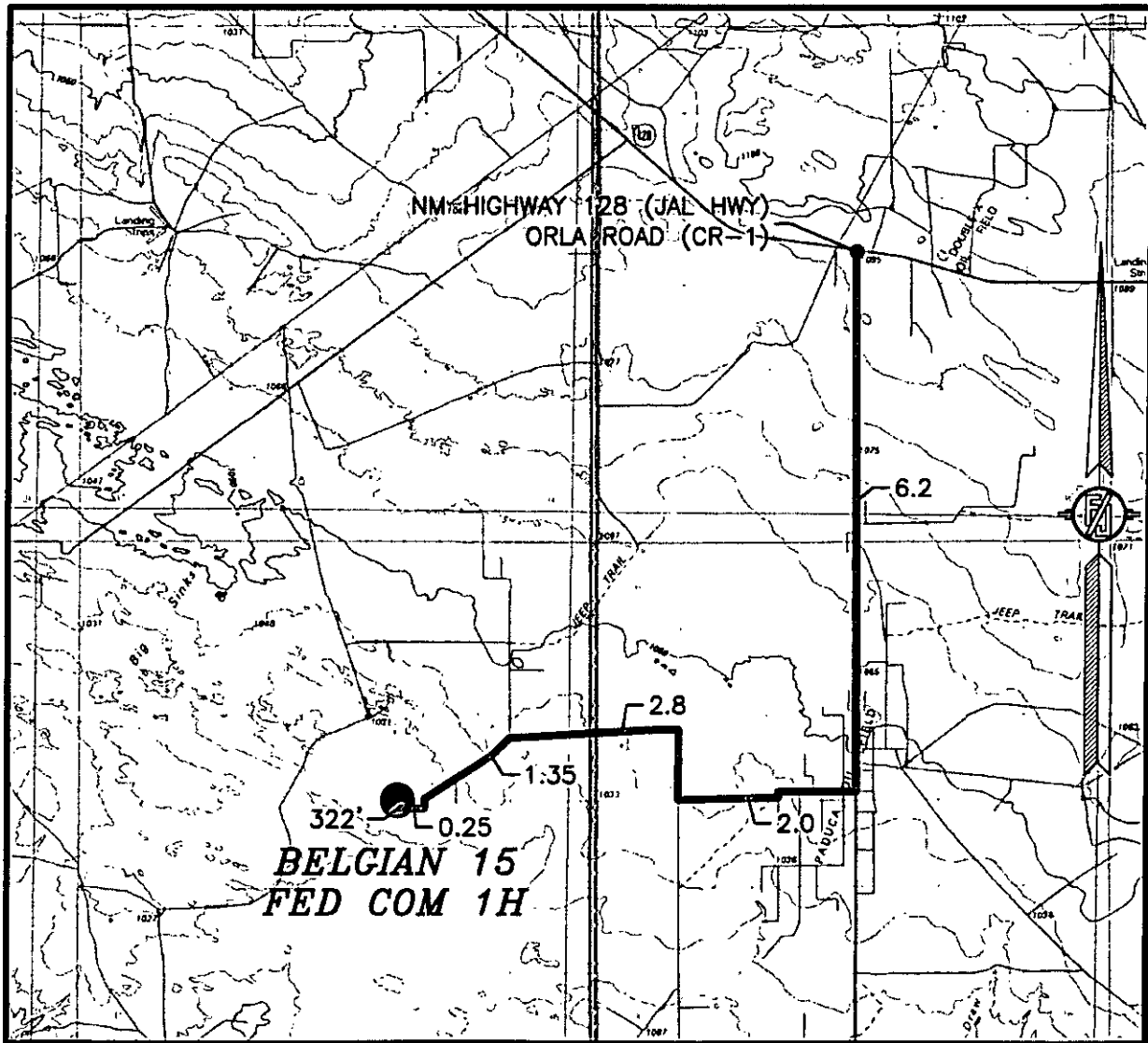
NOT TO SCALE

DEVON ENERGY PRODUCTION COMPANY, L.P.
BELGIAN 15 FED COM 1H
LOCATED 14 FT. FROM THE SOUTH LINE
AND 1610 FT. FROM THE EAST LINE OF
SECTION 15, TOWNSHIP 25 SOUTH,
RANGE 31 EAST, N.M.P.M.
EDDY COUNTY, STATE OF NEW MEXICO

AUGUST 20, 2014

MADRON SURVEYING, INC. 301 SOUTH CANAL (575) 234-3341 SURVEY NO. 3183 CARLSBAD, NEW MEXICO

SECTION 15, TOWNSHIP 25 SOUTH, RANGE 31 EAST, N.M.P.M.
EDDY COUNTY, STATE OF NEW MEXICO
VICINITY MAP



DISTANCES IN MILES

NOT TO SCALE

DIRECTIONS TO LOCATION

FROM THE INTERSECTION OF NM HIGHWAY 128 (JAL HWY) AND ORLA ROAD (CR-1) GO SOUTH ON ORLA ROAD 6.2 MILES TO MONSANTO ROAD ON RIGHT GO WEST ON MONSANTO ROAD 2.0 MILES TO ROAD INTERSECTION GO NORTH (RIGHT) 2.8 MILES TO ROAD INTERSECTION NORTH, SOUTH & SOUTHWEST GO SOUTHWEST 1.35 MILES ABOUT 200'± PAST A CATTLE GUARD TURN RIGHT OVER ANOTHER CATTLE GUARD GO WEST 0.25 MILES ON RIGHT FOLLOW FLAGS 332 L.F. NORTH TO SOUTHEAST CORNER OF PAD

DEVON ENERGY PRODUCTION COMPANY, L.P.
BELGIAN 15 FED COM 1H

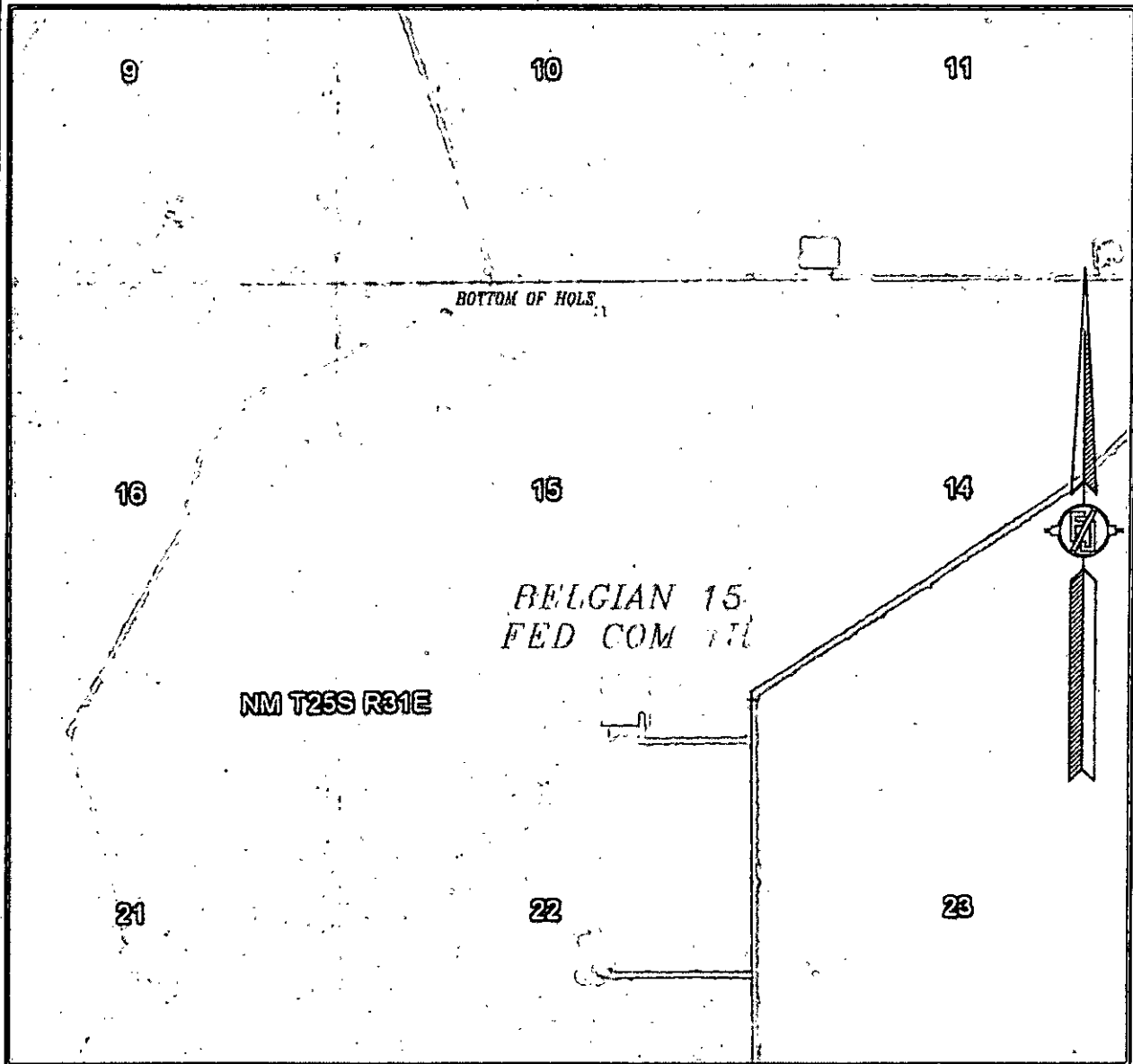
LOCATED 14 FT. FROM THE SOUTH LINE
AND 1610 FT. FROM THE EAST LINE OF
SECTION 15, TOWNSHIP 25 SOUTH,
RANGE 31 EAST, N.M.P.M.
EDDY COUNTY, STATE OF NEW MEXICO

AUGUST 20, 2014

MADRON SURVEYING, INC. 301 SOUTH CANAL (575) 234-3341 CARLSBAD, NEW MEXICO

SURVEY NO. 3183

SECTION 15, TOWNSHIP 25 SOUTH, RANGE 31 EAST, N.M.P.M.
EDDY COUNTY, STATE OF NEW MEXICO
AERIAL PHOTO



NOT TO SCALE
AERIAL PHOTO:
GOOGLE EARTH
APR. 2013

DEVON ENERGY PRODUCTION COMPANY, L.P.
BELGIAN 15 FED COM 1H

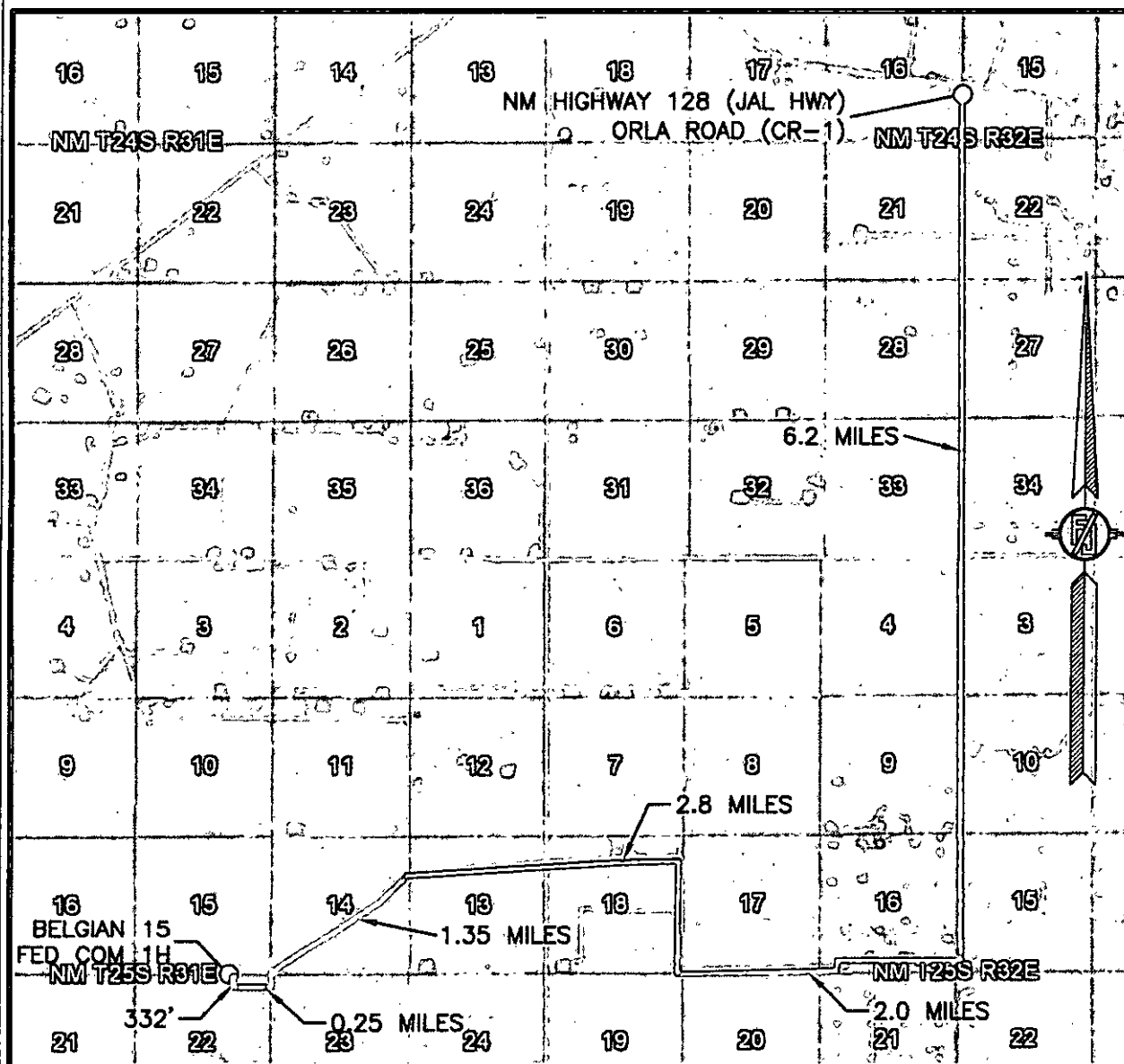
LOCATED 14 FT. FROM THE SOUTH LINE
AND 1610 FT. FROM THE EAST LINE OF
SECTION 15, TOWNSHIP 25 SOUTH,
RANGE 31 EAST, N.M.P.M.
EDDY COUNTY, STATE OF NEW MEXICO

AUGUST 20, 2014

SURVEY NO. 3183

MADRON SURVEYING, INC. 301 SOUTH CANAL (575) 234-3341 CARLSBAD, NEW MEXICO

SECTION 15, TOWNSHIP 25 SOUTH, RANGE 31 EAST, N.M.P.M.
 EDDY COUNTY, STATE OF NEW MEXICO
 AERIAL ACCESS ROUTE MAP



NOT TO SCALE
 AERIAL PHOTO:
 GOOGLE EARTH
 APR. 2013

DEVON ENERGY PRODUCTION COMPANY, L.P.
 BELGIAN 15 FED COM 1H
 LOCATED 14 FT. FROM THE SOUTH LINE
 AND 1610 FT. FROM THE EAST LINE OF
 SECTION 15, TOWNSHIP 25 SOUTH,
 RANGE 31 EAST, N.M.P.M.
 EDDY COUNTY, STATE OF NEW MEXICO

AUGUST 20, 2014

SURVEY NO. 3183

MADRON SURVEYING, INC. 301 SOUTH CANAL (575) 234-3341 CARLSBAD, NEW MEXICO