

UNITED STATES
DEPARTMENT OF THE INTERIOR
BUREAU OF LAND MANAGEMENTFORM APPROVED
OMB NO. 1004-0135
Expires: July 31, 2010NM OIL CONSERVATION
ARTESIA DISTRICT
OCT 11 2016
RECEIVED

SUNDRY NOTICES AND REPORTS

Do not use this form for proposals to drill or to re-enter an abandoned well. Use form 3160-3 (APD) for such proposals.

Carlsbad Field Office
OCD Artesia5. Lease Serial No.
NM89156

6. If Indian, Allottee or Tribe Name

SUBMIT IN TRIPLICATE - Other instructions on reverse side.

7. If Unit or CA/Agreement, Name and/or No.

1. Type of Well

☒ Oil Well ☐ Gas Well ☐ Other

8. Well Name and No.

OXY WHIPSNAKE FEDERAL 1

2. Name of Operator

LIME ROCK RESOURCES II-A, L.P. E-Mail: MIKE@PIPPINLLC.COM

Contact: MIKE PIPPIN

9. API Well No.

30-015-35031

3a. Address

C/O MIKE PIPPIN 3104 N. SULLIVAN
FARMINGTON, NM 87401

3b. Phone No. (include area code)

Ph: 505-327-4573

10. Field and Pool, or Exploratory

UND. REDLAKE, ATOKA MORROW

4. Location of Well (Footage, Sec., T., R., M., or Survey Description)

Sec 8 T18S R27E NWSE 1980FSL 2250FEL

11. County or Parish, and State

EDDY COUNTY, NM

12. CHECK APPROPRIATE BOX(ES) TO INDICATE NATURE OF NOTICE, REPORT, OR OTHER DATA

TYPE OF SUBMISSION

TYPE OF ACTION

☒ Notice of Intent☐ Subsequent Report☐ Final Abandonment Notice☐ Acidize☐ Alter Casing☐ Casing Repair☐ Change Plans☐ Convert to Injection☐ Deepen☐ Fracture Treat☐ New Construction☐ Plug and Abandon☐ Plug Back☐ Production (Start/Resume)☐ Reclamation☒ Recomplete☐ Temporarily Abandon☐ Water Disposal☐ Water Shut-Off☐ Well Integrity☐ Other

13. Describe Proposed or Completed Operation (clearly state all pertinent details, including estimated starting date of any proposed work and approximate duration thereof. If the proposal is to deepen directionally or recompleate horizontally, give subsurface locations and measured and true vertical depths of all pertinent markers and zones. Attach the Bond under which the work will be performed or provide the Bond No. on file with BLM/BIA. Required subsequent reports shall be filed within 30 days following completion of the involved operations. If the operation results in a multiple completion or recompleation in a new interval, a Form 3160-4 shall be filed once testing has been completed. Final Abandonment Notices shall be filed only after all requirements, including reclamation, have been completed, and the operator has determined that the site is ready for final inspection.)

THIS IS A REQUEST TO RECOMPLETE FROM THE MORROW TO THE YESO

MIRUSU. TOH w/tbg. TIH w/5-1/2" RBP & PKR & set RBP @ ~4900' & PKR @ ~4870'. PT 5-1/2" csg to 3500 psi for 15 min. TOH. Set 5-1/2" CIBP @ ~9330' & spot 25 sx cmt (~226') on top. (Existing Morrow perfs @ 9381'-9384'). PT 5-1/2" csg to 3500 psi.

Set 5-1/2" CBP @ ~4900' & PT 5-1/2" csg & CBP to ~3500 psi. Perf Tubb @ ~4404'-4715' w/33 holes. Treat new Tubb perfs w/1500 gal 15% HCL & frac w/30,000# 100 mesh & 305,970# 40/70 sand in slick water.

Set 5-1/2" CBP @ ~4350' & PT 5-1/2" csg & CBP to ~3500 psi. Perf Yeso @ ~3930'-4305' w/35 holes. Treat new Yeso perfs w/1500 gal 15% HCL & frac w/30,000# 100 mesh & 367,080# 40/70 sand in slick water.

SEE ATTACHED FOR
CONDITIONS OF APPROVAL

14. I hereby certify that the foregoing is true and correct.

Electronic Submission #350601 verified by the BLM Well Information System
For LIME ROCK RESOURCES II-A, L.P., sent to the Carlsbad
Committed to AFMSS for processing by PRISCILLA PEREZ on 09/12/2016 ()

Name (Printed/Typed) MIKE PIPPIN

Title PETROLEUM ENGINEER

Signature (Electronic Submission)

Date 09/09/2016

THIS SPACE FOR FEDERAL OR STATE OFFICE USE

Approved By Mustafa HagueTitle Engineer

APPROVED

Date 09/30/2016

Conditions of approval, if any, are attached. Approval of this notice does not warrant or certify that the applicant holds legal or equitable title to those rights in the subject lease which would entitle the applicant to conduct operations thereon.

Office CFO

Title 18 U.S.C. Section 1001 and Title 43 U.S.C. Section 1212, make it a crime for any person knowingly and willfully to make to any department or agency of the United States any false, fictitious or fraudulent statements or representations as to any matter within its jurisdiction.

** OPERATOR-SUBMITTED ** OPERATOR-SUBMITTED **

BUREAU OF LAND MANAGEMENT
CARLSBAD FIELD OFFICE

Additional data for EC transaction #350601 that would not fit on the form


32. Additional remarks, continued

water.

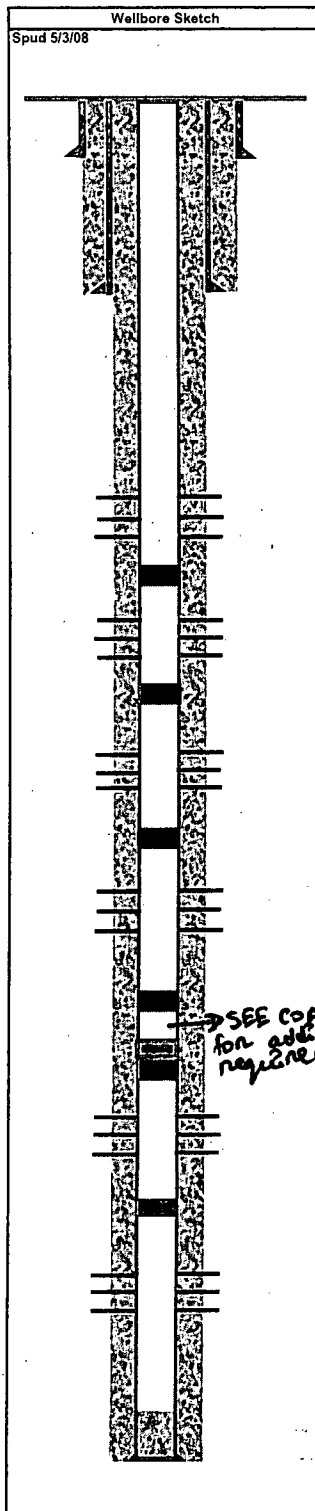
Set 5-1/2" CBP @ ~3800' & PT 5-1/2" csg & CBP to ~3500 psi. Perf Yeso @ ~3290'-3692' w/37 holes. Treat new Yeso perms w/1500 gal 15% HCL & frac w/30,000# 100 mesh & 383,880# 40/70 sand in slick water.

Set 5-1/2" CBP @ ~3210' & PT 5-1/2" csg & CBP to ~3500 psi. Perf Yeso @ ~2868'-3131' w/27 holes. Treat new Yeso perms w/1500 gal 15% HCL & frac w/30,000# 100 mesh & 249,270# 40/70 sand in slick water.

CO after frac, drill CBPs @ 3210', 3800', 4350' & CO to CBP @ 4900'. Land ESP on 2-7/8" 6.5# L-80 tbg @ ~2850'. Release completion rig. Complete well as a single Yeso oil well. See attached WBD & C-102.

	County	EDDY	Well Name (Hawk 8J Federal #56)	Field:	East Artesia	Well Sketch:	AFE R16012	
			Oxy Whipsnake Federal #1		Glorieta-Yeso		LRR II-A, L.P.	
	Surface Lat:	32.7605231°N	BH Lat:	32.7605231°N	Survey:	S8-T18S-R27E (NW of J)	API #	30-015-35031
	Surface Long:	104.2993494°W	BH Long:	104.2993494°W		1982' FSL & 2252' FEL	OGRID #	277558

Directional Data:		Tubular Data								Wellhead Data		
KOP	Vertical Well	Tubulars	Size	Weight	Grade	Thread	TVD	MD	TOC	Type:		
Max Dev.:		Surface	13 3/8"	54.5#	J55	STC	401'	401'	SURF	WP:		
Dleg sev:		Intermediate	9 5/8"	40#	J-55	STC	1,807'	1,807'	SURF	Tree Cap	Flange:	
Dev @ Perfs		Production	5 1/2"	17#	N-80	LTC	9,640'	9,640'	SURF	Thread:		
Ret to Vert:		Liner								Tbg Hanger:		
Drilling / Completion Fluid		CEMENT DATA								8TM Flange:		
Drilling Fluid: 10.2 PPG Brine / Salt Gel			L/sks	Yld	Wt	T/sks	Yld	Wt	XS	BPV Profile:	NA	
Drilling Fluid:		Surface	75			200			50 sx	Elevations:	GL - RKB = 18'	
Completion Fluid: 2% KCL		Intermediate	535			200			150 sx	RKB:	3474	
Completion Fluid:		Liner								GL:	3,456.0'	
Packer Fluid: NA		Production	1100			650			23 SX			



Completion Information							
DEPTHS (MD)	FORMATION TOPS / WELL INFO	PERFORATIONS		# of HOLES	DETAILS		
		from	to				
0							
401'	17 1/2" Hole				13 3/8" 54.5#J55 Surf Csg. Circ 50 sx Cmt to surf		
667'	Queen						
1,004'	Grayburg						
1,193'	San Andres						
1,807'	12.25" Hole				9-5/8" Intermediate Csg Circ 150 sx Cmt to surf		
2,702'	Glorieta						
2,809'	Yeso						
3.5" 9.3# L80 Seamless tbg w polycore original internal lining (2.5" ID), NTZ400-120DT142 PCP pump w 286 stator elastomer							
TAC at 2820', 3 jts tbg, 8" slotted sub, Solid BP, 1.25" D or KD drive rods w 1" pin & 2" OD coupling, w 100 HP Drive Head VSD							
Start at 100 RPM initially and gradually increase the speed after observing well tests and fluid levels. (536-1929 BFPD Rating)							
May run an ESP w 2 7/8" L80 Seamless tbg and intake at 2820'							
	Yeso Stage #4	2,868'	3,131'	27	263'; 1500 g 15% HCL, 7614 bbls water		
					30k # 100 Mesh, 249,270 # 40/70, 80-100 BPM		
CBP at 3210'							
	Yeso Stage #3	3,290'	3,692'	37	402'; 1500 g 15% HCL, 9614 bbls water		
					30k # 100 Mesh, 383,880 # 40/70, 80-100 BPM		
CBP at 3800'							
	Yeso Stage #2	3,930'	4,305'	35	375'; 1500 g 15% HCL, 9414 bbls water		
					30k # 100 Mesh, 367,080 # 40/70, 80-100 BPM		
CBP at 4350'							
4,400'	Tubb						
	Tubb Stage #1	4,404'	4,715'	33	311'; 1500 g 15% HCL, 8414 bbls water		
					30k # 100 Mesh, 305,970 # 40/70, 80-100 BPM		
CBP at 4900' Do Not Drill						New PBTD, Do Not Drill	
CIBP at 9330' & 25 sks cement on top						8 TOG, witness by BLM	
	Morrow	9,381'	9,384'	12	3' - flowing 186 MCFD after perforated		
	Completed 10/6/08						
CIBP at 9440'							
	Morrow	9,449'	9,474'	22	25'; 24 bbls of 7.5% HCL & 1000 scf N2		
	Completed 9/8/08						
9,440'	PBTD - CIBP				Float Collar		
9,640'	PROD CSG				5-1/2" Prod Csg. Circ 23 SX Cmt to Surf		
Comments: Originally drilled as a Morrow well by Chi Operating, Inc.				Plug back Depth:	9,440'	MD	
Lime Rock Resources will take over operations and change the name to Hawk 8J Federal #56				Total Well Depth:	9,640'	MD	
				Prepared By:	Date:		
				Eric McClusky	7-Sep-16		

District I

1625 N. French Dr., Hobbs, NM 88240

District II

1301 W. Grand Avenue, Artesia, NM 88210

District III

1000 Rio Brazos Rd., Aztec, NM 87410

District IV

1220 S. St. Francis Dr., Santa Fe, NM 87505

State of New Mexico
Energy, Minerals & Natural Resources Department**OIL CONSERVATION DIVISION**

1220 South St. Francis Dr.

Santa Fe, NM 87505

NM OIL CONSERVATION
ARTESIA DISTRICT
OCT 11 2016
RECEIVED

Form C-102

Revised October 12, 2005

Submit to Appropriate District Office

State Lease - 4 Copies

Fee Lease - 3 Copies

☐ AMENDED REPORT**WELL LOCATION AND ACREAGE DEDICATION PLAT**

¹ API Number 30-015-35031	² Pool Code 51120	³ Pool Name Red Lake, Glorieta-Yeso
⁴ Property Code 316716	⁵ Property Name OXY WHIPSNAKE FEDERAL	⁶ Well Number 1
⁷ OGRID No. 277558	⁸ Operator Name LIME ROCK RESOURCES II-A, L.P.	⁹ Elevation 3456' GL

¹⁰ Surface Location

UL or lot no.	Section	Township	Range	Lot Idn	Feet from the	North/South line	Feet from the	East/West line	County
J	8	18-S	27-E		1982	SOUTH	2252	EAST	EDDY

¹¹ Bottom Hole Location If Different From Surface

UL or lot no.	Section	Township	Range	Lot Idn	Feet from the	North/South line	Feet from the	East/West line	County

¹² Dedicated Acres 40	¹³ Joint or Infill	¹⁴ Consolidation Code	¹⁵ Order No.
-------------------------------------	-------------------------------	----------------------------------	-------------------------

No allowable will be assigned to this completion until all interests have been consolidated or a non-standard unit has been approved by the division.

	¹⁷ OPERATOR CERTIFICATION I hereby certify that the information contained herein is true and complete to the best of my knowledge and belief, and that this organization either owns a working interest or unleased mineral interest in the land including the proposed bottom hole location or has a right to drill this well at this location pursuant to a contract with an owner of such a mineral or working interest, or to a voluntary pooling agreement or a compulsory pooling order heretofore entered by the division. Date: 9/9/16 Signature: _____ Mike Pippin Printed Name
	¹⁸ SURVEYOR CERTIFICATION I hereby certify that the well location shown on this plat was plotted from field notes of actual surveys made by me or under my supervision, and that the same is true and correct to the best of my belief. Date of Survey: 7/15/16 Signature and Seal of Professional Surveyor: Filmon F. Jaramillo 12797 Certificate Number

Oxy Whipsnake Federal 1
30-015-35031
Lime Rock Resources
Conditions of Approval

Notify BLM at 575-361-2822 (Eddy County) or 575-393-3612 (Lea County) a minimum of 24 hours prior to commencing work.

Work to be completed by December 30, 2016.

1. Operator shall set a CIBP at 9,330' and place 25 sx Class H cement. Tag and Witness by BLM required.
2. Spot 25 sacks of cement @ 8600'-8450'
3. Spot 25 sacks of cement @ 8100'-7950'.
4. Spot 25 sacks of cement @ 6300'-6150'.
5. Must conduct a casing integrity test before perforating and fracturing. Submit results to BLM. The CIT is to be performed on the production casing to max treating pressure. Notify BLM if test fails.
6. Surface disturbance beyond the originally approved pad must have prior approval.
7. Closed loop system required.
8. All waste (i.e. drilling fluids, trash, salts, chemicals, sewage, gray water, etc.) created as a result of work over operations shall be safely contained and disposed of properly at a waste disposal facility. No waste material or fluid shall be disposed of on the well location or surrounding area. Porto-johns and trash containers will be on-location during fracturing operations or any other crew-intensive operations.
9. Operator to have H2S monitoring equipment on location.
10. A minimum of a 2000 (2M) BOP to be used. All blowout preventer (BOP) and related equipment (BOPE) shall comply with reasonable well control requirements. A two ram system with a blind ram and a pipe ram designed for the size of the work string shall be adequate. Tapered work strings will require an additional pipe ram. The manifold shall comply with Onshore Oil and Gas Order #2 Attachment I (2M Diagrams of Choke Manifold Equipment). The accumulator system shall have an immediately available power source to close the rams and retain 200 psi above pre-charge. The pre-charge test shall follow requirements in Onshore Order #2.

11. Subsequent sundry required detailing work done, a C-102 form, and completion report for the new formations. Operator to include well bore schematic of current well condition when work is complete.

12. See attached for General Plugback Guidelines

MHH 09292016

BUREAU OF LAND MANAGEMENT
Carlsbad Field Office
620 East Greene Street
Carlsbad, New Mexico 88220
575-234-5972

Permanent Abandonment of Production Zone Conditions of Approval

Failure to comply with the following Conditions of Approval may result in a Notice of Incidents of Noncompliance (INC) in accordance with 43 CFR 3163.1.

1. Plug back operations shall commence within **ninety (90)** days from this approval. **If you are unable to plug back the well by the 90th day provide this office, prior to the 90th day, with the reason for not meeting the deadline and a date when we can expect the well to be plugged back. Failure to do so will result in enforcement action.**

2. **Notification:** Contact the appropriate BLM office at least 24 hours prior to the commencing of any plug back operations. For wells in Eddy County, call 575-361-2822. For wells in Lea County, call 575-393-3612

3. **Blowout Preventers:** A blowout preventer (BOP), as appropriate, shall be installed before commencing any plugging operation. The BOP must be installed and maintained as per API and manufacturer recommendations. The minimum BOP requirement is a 2M system for a well not deeper than 9,090 feet; a 3M system for a well not deeper than 13,636 feet; and a 5M system for a well not deeper than 22,727 feet.

4. **Mud Requirement:** Mud shall be placed between all plugs. Minimum consistency of plugging mud shall be obtained by mixing at the rate of 25 sacks (50 pounds each) of gel per 100 barrels of brine water. Minimum nine (9) pounds per gallon.

5. **Cement Requirement:** Sufficient cement shall be used to bring any required plug to the specified depth and length. Any given cement volumes on the proposed plugging procedure are merely estimates and are not final. Unless specific approval is received, no plug except the surface plug shall be less than 25 sacks of cement. Any plug that requires a tag will have a minimum WOC time of 4 hours.

In lieu of a cement plug across perforations in a cased hole (not for any other plugs), a bridge plug set within 50 feet to 100 feet above the perforations shall be capped with 25 sacks of cement.

Before pumping cement on top of CIBP, tag will be required to verify depth. Based on depth, a tag of the cement may be deemed necessary.

Unless otherwise specified in the approved procedure, the cement plug shall consist of either **Neat Class "C"**, for up to 7,500 feet of depth or **Neat Class "H"**, for deeper than 7,500 feet plugs.

6. **Subsequent Plug back Reporting:** Within 30 days after plug back work is completed, file one original and three copies of the Subsequent Report, Form 3160-5 to BLM. The report should give in detail the manner in which the plug back work was carried out, the extent (by depths) of cement plugs placed, and the size and location (by depths) of casing left in the well. **Show date work was completed.** If plugging back to a new zone submit a Completion Report, form 3160-4 with the Subsequent Report.

7. **Trash:** All trash, junk and other waste material shall be contained in trash cages or bins to prevent scattering and will be removed and deposited in an approved sanitary landfill. Burial on site is not permitted.