

District I
1625 N. French Dr., Hobbs, NM 88240
Phone: (575) 393-6161 Fax: (575) 393-0720
District II
811 S. First St., Artesia, NM 88210
Phone: (575) 748-1283 Fax: (575) 748-9720
District III
1000 Rio Brazos Road, Aztec, NM 87410
Phone: (505) 334-6178 Fax: (505) 334-6170
District IV
1220 S. St. Francis Dr., Santa Fe, NM 87505
Phone: (505) 476-3460 Fax: (505) 476-3462

State of New Mexico
Energy, Minerals & Natural Resources
Department
OIL CONSERVATION DIVISION
1220 South St. Francis Dr.
Santa Fe, NM 87505

FORM C-102

Revised August 1, 2011

Submit one copy to appropriate

District Office

☐ AMENDED REPORT

WELL LOCATION AND ACREAGE DEDICATION PLAT

¹ API Number 30-015-43940	² Pool Code 75750	³ Pool Name CULEBRA BLUFF; WOLFCAMP, SOUTH (GAS)
⁴ Property Code	⁵ Property Name GUITAR 10-24S-28E RB	⁶ Well Number #201H
⁷ OGRID No.	⁸ Operator Name MATADOR PRODUCTION COMPANY	⁹ Elevation 2978'

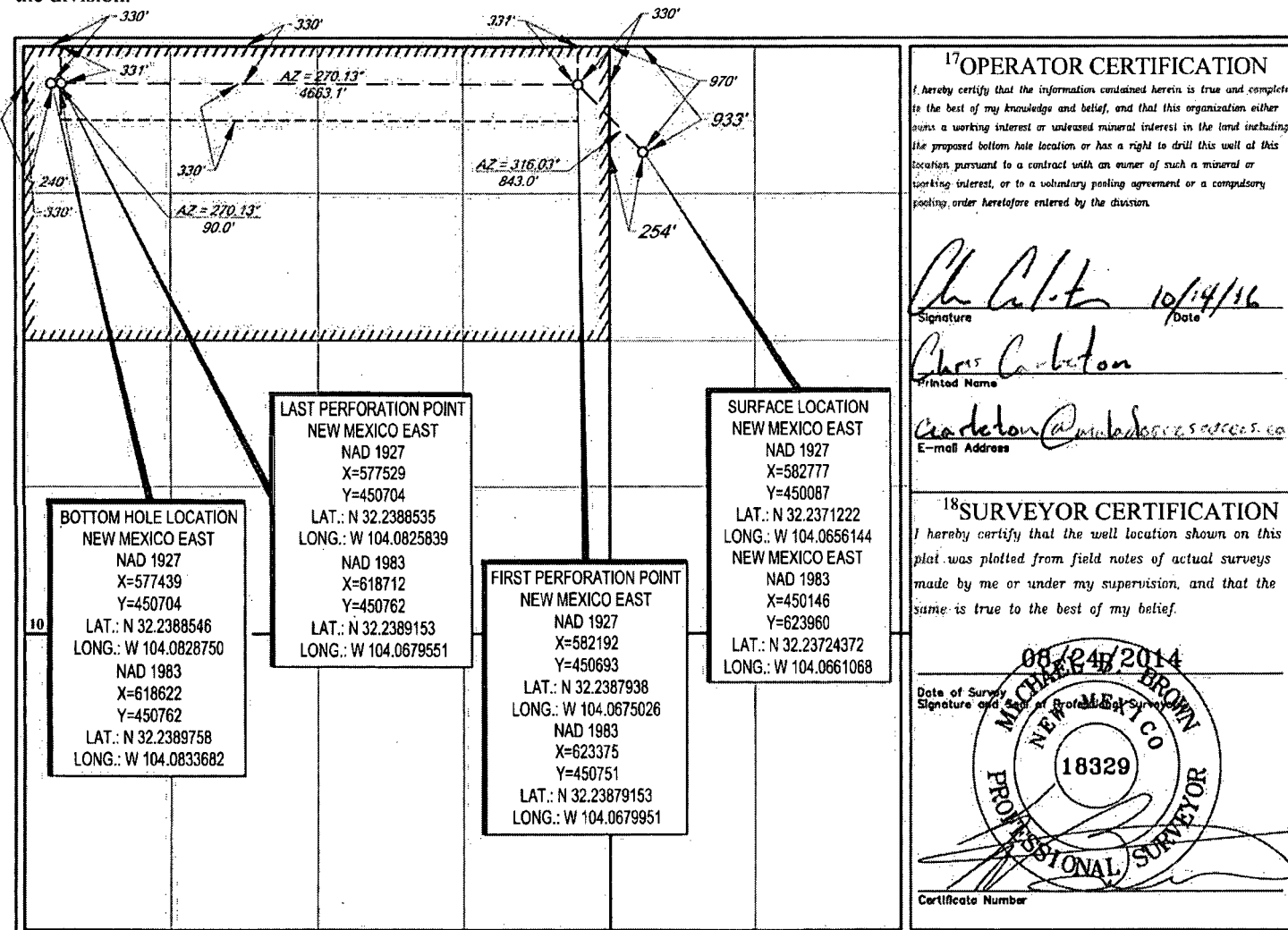
¹⁰Surface Location

UL or lot no.	Section	Township	Range	Lot Idn	Feet from the	North/South line	Feet from the	East/West line	County
D	11	24-S	28-E	-	933'	NORTH	254'	WEST	EDDY

UL or lot no.	Section	Township	Range	Lot Idn	Feet from the	North/South line	Feet from the	East/West line	County
D	10	24-S	28-E	-	330'	NORTH	240'	WEST	EDDY

¹¹ Dedicated Acres 320	¹² Joint or Infill	¹³ Consolidation Code	¹⁴ Order No.
---	-------------------------------	----------------------------------	-------------------------

No allowable will be assigned to this completion until all interests have been consolidated or a non-standard unit has been approved by the division.





Matador
PRODUCTION COMPANY

IRON ROD FOUND

1" IRON ROD FOUND

WITNESS CORNER FND. BRASS CAP, U.S. G.L.O. SUR. 1942

FIRST PERFORATION POINT
 NEW MEXICO EAST
 NAD 1927
 X=582192
 Y=450693
 LAT.: N 32.2387938
 LONG.: W 104.0675026
 NAD 1983
 X=623375
 Y=450751
 LAT.: N 32.23879153
 LONG.: W 104.0679951

BOTTOM HOLE LOCATION
 NEW MEXICO EAST
 NAD 1927
 X=577439
 Y=450704
 LAT.: N 32.2388546
 LONG.: W 104.0828750
 NAD 1983
 X=618622
 Y=450762
 LAT.: N 32.2389758
 LONG.: W 104.0833682

LAST PERFORATION POINT
 NEW MEXICO EAST
 NAD 1927
 X=577529
 Y=450704
 LAT.: N 32.2388535
 LONG.: W 104.0825839
 NAD 1983
 X=618712
 Y=450762
 LAT.: N 32.2389153
 LONG.: W 104.0679551

SURFACE LOCATION
 NEW MEXICO EAST
 NAD 1927
 X=582777
 Y=450087
 LAT.: N 32.2371222
 LONG.: W 104.0656144
 NEW MEXICO EAST
 NAD 1983
 X=450146
 Y=623960
 LAT.: N 32.23724372
 LONG.: W 104.0661068

FND. BRASS CAP

1/2" IRON ROD FOUND

CHAE B. BR

DISTANCE & DIRECTION FROM INT. OF US-285 & DUARTE RD.,
GO EAST ON DUARTE RD. ±0.3 MILES, THENCE NORTH (LEFT) ON
N. NICHOLAS RD. ±0.6 MILES, THENCE RIGHT (EAST) ON BRAMBLE RD.
±550 FEET TO A POINT ±190 FEET SOUTHEAST OF THE LOCATION.

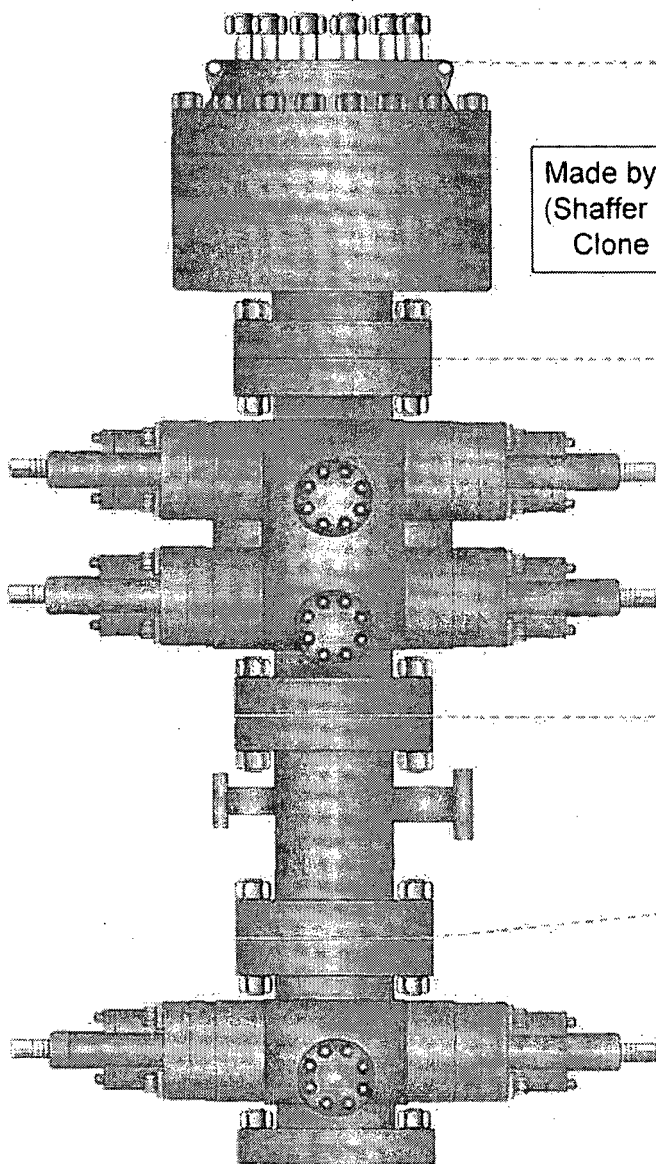
1400 EVERMAN PARKWAY, Ste. 197 • FT. WORTH, TEXAS 76140
TELEPHONE: (817) 744-7512 • FAX (817) 744-7548
2903 NORTH BIG SPRING • MIDLAND, TEXAS 79705
TELEPHONE: (432) 682-1653 OR (800) 767-1653 • FAX (432) 682-1743
WWW.TOPOGRAPHIC.COM



PATTERSON-UTI

Well Control

RIG: 297



Made by Cameron
(Shaffer Spherical)
Clone Annular

PATTERSON-UTI # PS2-628
STYLE: New Shaffer Spherical
BORE 13 5/8" PRESSURE 5,000
HEIGHT: 48 1/2" WEIGHT: 13,800 lbs

PATTERSON-UTI # PC2-128
STYLE: New Cameron Type U
BORE 13 5/8" PRESSURE 10,000
RAMS: TOP 5" Pipe BTM Blinds
HEIGHT: 66 5/8" WEIGHT: 24,000 lbs

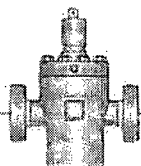
Length 40" Outlets 4" 10M
DSA 4" 10M x 2" 10M

PATTERSON-UTI # PC2-228
STYLE: New Cameron Type U
BORE 13 5/8" PRESSURE 10,000
RAMS: 5" Pipe
HEIGHT: 41 5/8" WEIGHT: 13,000 lbs

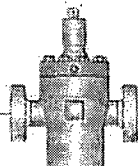
WING VALVES



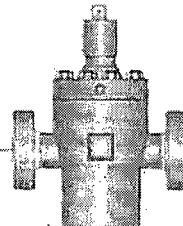
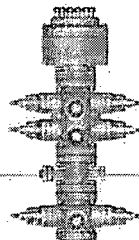
2" Check Valve



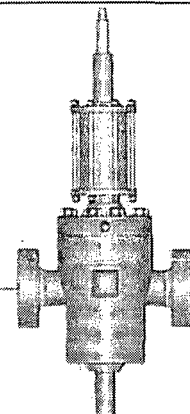
2" Manual Valve



2" Manual Valve



4" Manual Valve



4" Hydraulic Valve