

WELL LOCATION AND ACREAGE DEDICATION PLAT

¹ API Number 30-015-43966	² Pool Code 75750	³ Pool Name CULEBRA BLUFF;WOLFCAMP, SOUTH
⁴ Property Code 313717	⁵ Property Name GUITAR 10-248-28E RB	⁶ Well Number #221H
⁷ OGRID No. 228937	⁸ Operator Name MATADOR PRODUCTION COMPANY	⁹ Elevation 2979'

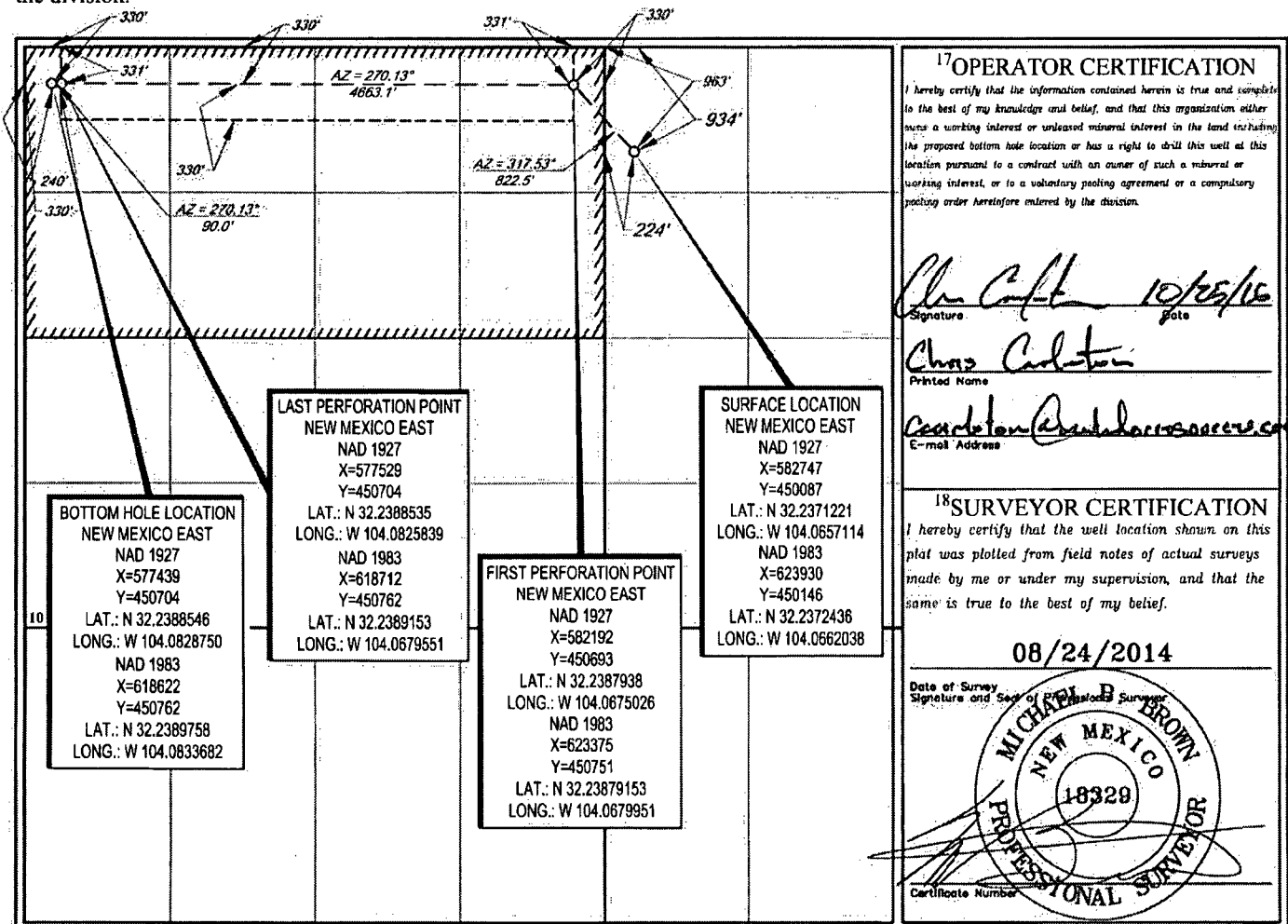
¹⁰Surface Location

UL or lot no.	Section	Township	Range	Lot Idn	Feet from the	North/South line	Feet from the	East/West line	County
D	11	24-S	28-E	-	934'	NORTH	224'	WEST	EDDY

UL or lot no.	Section	Township	Range	Lot Idn	Feet from the	North/South line	Feet from the	East/West line	County
D	10	24-S	28-E	-	330'	NORTH	240'	WEST	EDDY

¹¹ Dedicated Acres 320	¹² Joint or InRRI	¹³ Consolidation Code	¹⁴ Order No.
---------------------------------------------	------------------------------	----------------------------------	-------------------------

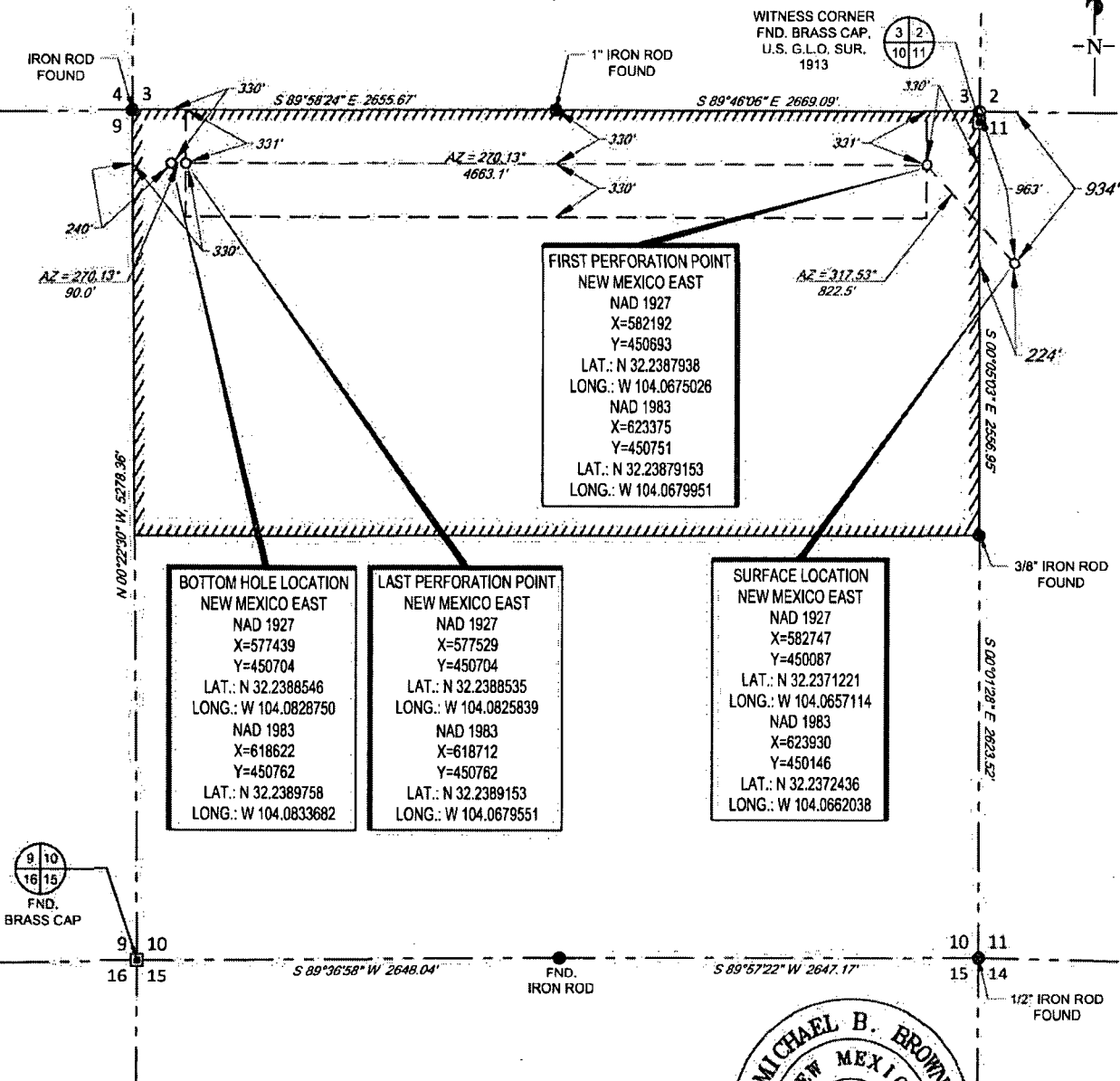
No allowable will be assigned to this completion until all interests have been consolidated or a non-standard unit has been approved by the division.



SCALE: 1" = 1000'
0' 500' 1000'



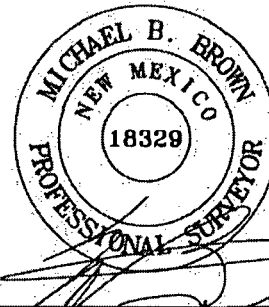
SECTION 10, TOWNSHIP 24 SOUTH, RANGE 28 EAST, N.M.P.M.
EDDY COUNTY, NEW MEXICO



LEASE NAME & WELL NO.: GUITAR 10-24S-28E RB #221H
SECTION 11 TWP 24-S RGE 28-E SURVEY N.M.P.M.
COUNTY EDDY STATE NM
DESCRIPTION 934' FNL & 224' FWL

DISTANCE & DIRECTION FROM INT. OF US-285 & DUARTE RD.,
GO EAST ON DUARTE RD. ±0.3 MILES, THENCE NORTH (LEFT) ON
N. NICHOLAS RD. ±0.6 MILES, THENCE RIGHT (EAST) ON BRAMBLE RD.
±550 FEET TO A POINT ±190 FEET SOUTHEAST OF THE LOCATION.

ALL BEARINGS, DISTANCES, AND COORDINATE VALUES CONTAINED HEREON ARE GRID BASED UPON THE NEW MEXICO STATE PLANE COORDINATE SYSTEM, EAST ZONE OF THE NORTH AMERICAN DATUM 1927, U.S. SURVEY FEET. THIS EASEMENT/SERVITUDE LOCATION SHOWN HEREON HAS BEEN SURVEYED ON THE GROUND UNDER MY SUPERVISION AND PREPARED ACCORDING TO THE EVIDENCE FOUND AT THE TIME OF SURVEY, AND DATA PROVIDED BY MATADOR PRODUCTION COMPANY. THIS CERTIFICATION IS MADE AND LIMITED TO THOSE PERSONS OR ENTITIES SHOWN ON THE FACE OF THIS PLAT AND IS NON-TRANSFERABLE. THIS SURVEY IS CERTIFIED FOR THIS TRANSACTION ONLY.
AS OF THE DATE OF SURVEY, ALL ABOVE GROUND APPURTENANCES WITHIN 300' OF THE STAKED LOCATION ARE SHOWN HEREON.



Michael Blake Brown, P.S. No. 18329
OCTOBER 5, 2016



TOPOGRAPHIC
LOYALTY INNOVATION LEGACY

1400 EVERMAN PARKWAY, Ste. 197 • FT. WORTH, TEXAS 76140
TELEPHONE: (817) 744-7512 • FAX (817) 744-7548
2803 NORTH BIG SPRING • MIDLAND, TEXAS 79705
TELEPHONE: (432) 682-1653 OR (800) 767-1653 • FAX (432) 682-1743
WWW.TOPOGRAPHIC.COM

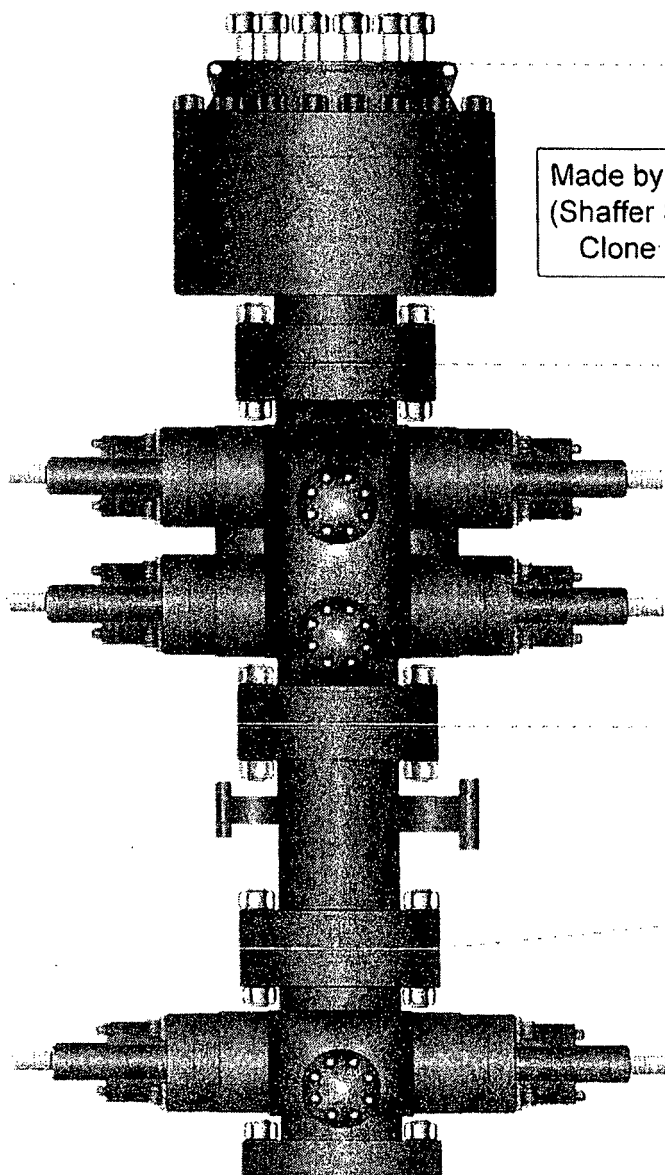


PATTERSON-UTI

Well Control

RIG:

295



Made by Cameron
(Shaffer Spherical)
Clone Annular

PATTERSON-UTI # PS2-628

STYLE: New Shaffer Spherical

BORE 13 5/8" PRESSURE 5,000

HEIGHT: 48 1/2" WEIGHT: 13,800 lbs

PATTERSON-UTI # PC2-128

STYLE: New Cameron Type U

BORE 13 5/8" PRESSURE 10,000

RAMS: TOP 5" Pipe BTM Blinds

HEIGHT: 66 5/8" WEIGHT: 24,000 lbs

Length 40" Outlets 4" 10M

DSA 4" 10M x 2" 10M

PATTERSON-UTI # PC2-228

STYLE: New Cameron Type U

BORE 13 5/8" PRESSURE 10,000

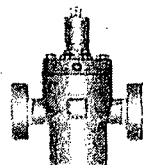
RAMS: 5" Pipe

HEIGHT: 41 5/8" WEIGHT: 13,000 lbs

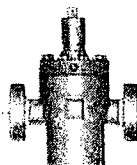
WING VALVES



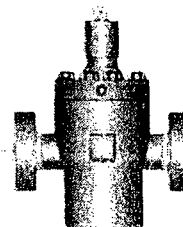
2" Check Valve



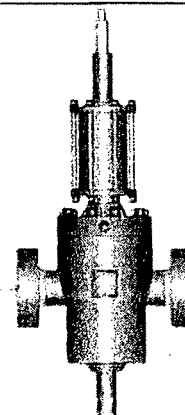
2" Manual Valve



2" Manual Valve



4" Manual Valve



4" Hydraulic Valve