

DISTRICT I
1625 N. French Dr., Hobbs, NM 88240
Phone (575) 393-6161 Fax (575) 393-0720

DISTRICT II
811 S. First St., Artesia, NM 88210
Phone (575) 748-1283 Fax (575) 748-9720

DISTRICT III
1000 Rio Brazos Road, Aztec, NM 87410
Phone (505) 334-6178 Fax (505) 334-6170

DISTRICT IV
1220 S. St. Francis Dr., Santa Fe, NM 87505
Phone (505) 476-3460 Fax (505) 476-3462

State of New Mexico
Energy, Minerals & Natural Resources Department

OIL CONSERVATION DIVISION
1220 South St. Francis Dr.
Santa Fe, New Mexico 87505

NM OIL CONSERVATION
ARTESIA DISTRICT
NOV 30 2016
Form C-102
Revised August 1, 2011
Submit one copy to appropriate District Office

RECEIVED ☐ AMENDED REPORT

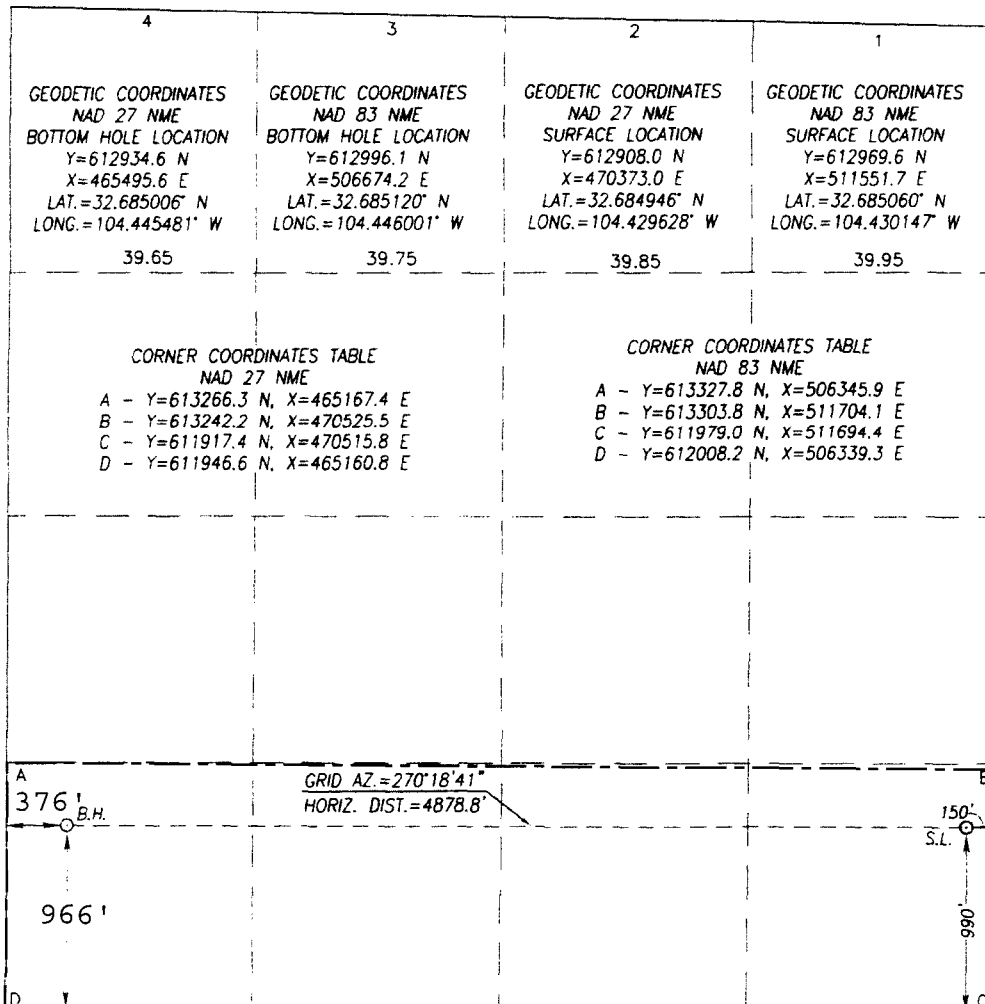
WELL LOCATION AND ACREAGE DEDICATION PLAT

API Number 30-015-43660	Pool Code 50270	Pool Name Penasco Draw; SA-Yeso
Property Code 38872	Property Name CLYDESDALE 1 FEE	
OGRID No. 229137	Operator Name COG OPERATING, LLC	
		Well Number 7H
		Elevation 3391'

Surface Location									
UL or lot No	Section	Township	Range	Lot Idn	Feet from the	North/South line	Feet from the	East/West line	County
P	1	19-S	25-E		990	SOUTH	150	EAST	EDDY

Bottom Hole Location If Different From Surface									
UL or lot No	Section	Township	Range	Lot Idn	Feet from the	North/South line	Feet from the	East/West line	County
M	1	19-S	25-E		966	SOUTH	376	WEST	EDDY
Dedicated Acres 160	Joint or Infill	Consolidation Code	Order No.						

NO ALLOWABLE WILL BE ASSIGNED TO THIS COMPLETION UNTIL ALL INTERESTS HAVE BEEN CONSOLIDATED OR A NON-STANDARD UNIT HAS BEEN APPROVED BY THE DIVISION



OPERATOR CERTIFICATION	
I hereby certify that the information herein is true and complete to the best of my knowledge and belief, and that this organization either owns a working interest or unleased mineral interest in the land including the proposed bottom hole location or has a right to drill this well at this location pursuant to a contract with an owner of such mineral or working interest, or to a voluntary pooling agreement or a compulsory pooling order heretofore entered by the division.	
	11/22/16 Date
Signature Kanicia Castillo Printed Name	
kcastillo@concho.com E-mail Address	
SURVEYOR CERTIFICATION	
I hereby certify that the well location shown on this plat was plotted from field notes of actual surveys made by me or under my supervision, and that the same is true and correct to the best of my belief.	
JANUARY 14, 2016	
Date of Survey Signature & Seal of Professional Surveyor:	
Certificate Number Gary G. Eidson 12641 Ronald J. Eidson 3239	
ACK JWSC W O 16110020	