

# NM OIL CONSERVATION

ARTESIA DISTRICT

State of New Mexico

DEC 05 2016

## DISTRICT I

1825 N FRENCH DR. ROBBIE, NM 88240

Energy, Minerals and Natural Resources Department

## DISTRICT II

1301 W. GRAND AVENUE, ARTESIA, NM 88210

## DISTRICT III

1000 Rio Brazos Ed., Aztec, NM 87410

## DISTRICT IV

1220 S. ST. FRANCIS DR., SANTA FE, NM 87505

## OIL CONSERVATION DIVISION

1220 SOUTH ST. FRANCIS DR.  
Santa Fe, New Mexico 87505

RECEIVED

Form C-102  
Revised JUNE 10, 2003  
Submit to Appropriate District Office  
State Lease - 4 Copies  
Fee Lease - 3 Copies

### WELL LOCATION AND ACREAGE DEDICATION PLAT

☐ AMENDED REPORT

API Number 30-015-34280	Pool Code 97566	Pool Name Walnut Canyon; Upper Penn (Gas)
Property Code 35027	Property Name BLACK MAGIC 6 COM	Well Number 1
OGRIID No. 162683	Operator Name CIMAREX ENERGY CO. OF COLORADO	Elevation 3387'

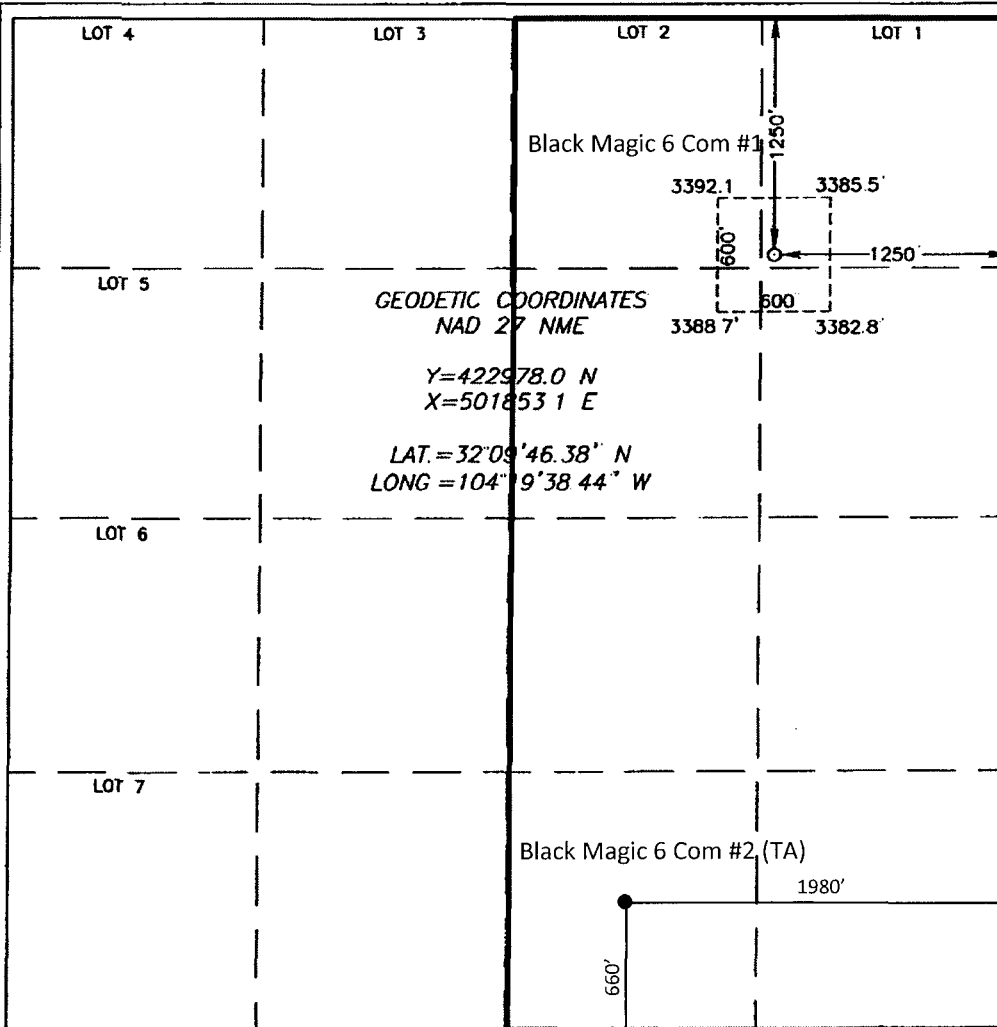
#### Surface Location

UI or lot No	Section	Township	Range	Lot Idn	Feet from the	North/South line	Feet from the	East/West line	County
A	6	25-S	26-E		1250	NORTH	1250	EAST	EDDY

#### Bottom Hole Location If Different From Surface

UI or lot No.	Section	Township	Range	Lot Idn	Feet from the	North/South line	Feet from the	East/West line	County
Dedicated Acres 319.4	Joint or Infill Y	Consolidation Code P	Order No.						

NO ALLOWABLE WILL BE ASSIGNED TO THIS COMPLETION UNTIL ALL INTERESTS HAVE BEEN CONSOLIDATED  
OR A NON-STANDARD UNIT HAS BEEN APPROVED BY THE DIVISION



#### OPERATOR CERTIFICATION

I hereby certify the the information  
contained herein is true and complete to the  
best of my knowledge and belief

*[Signature]*  
Signature  
Amithy Crawford  
Printed Name

Regulatory Analyst  
Title  
11/29/2016  
Date

#### SURVEYOR CERTIFICATION

I hereby certify that the well location shown  
on this plat was plotted from field notes of  
actual surveys made by me or under my  
supervision, and that the same is true and  
correct to the best of my belief.

SEPTEMBER 19, 2005

Date Surveyed  
Signature of GARY EDSON  
Professional Surveyor

LA  
NEW MEXICO  
GARY EDSON  
05.11.144G  
Certificate No. GARY EDSON 12841  
REGISTERED PROFESSIONAL SURVEYOR