

District I
1625 N. French Dr., Hobbs, NM 88240
Phone: (575) 393-6161 Fax: (575) 393-0720
District II
811 S. First St., Artesia, NM 88210
Phone: (575) 748-1283 Fax: (575) 748-9720
District III
1000 Rio Brazos Road, Aztec, NM 87410
Phone: (505) 334-6178 Fax: (505) 334-6170
District IV
1220 S. St. Francis Dr., Santa Fe, NM 87505
Phone: (505) 476-3460 Fax: (505) 476-3462

State of New Mexico
Energy, Minerals & Natural Resources Department
OIL CONSERVATION DIVISION
1220 South St. Francis Dr.
Santa Fe, NM 87505

Form C-102
Revised August 1, 2011
Submit one copy to appropriate
District Office

☒ AMENDED REPORT
(As Drilled)

WELL LOCATION AND ACREAGE DEDICATION PLAT

API Number 30-015-43906	Pool Code 96238	Pool Name Corral Draw Bone Spring
Property Code 316106	Property Name CEDAR CANYON "22" FEDERAL COM	Well Number 6Y
OGRID No. 16096	Operator Name OXY USA INC.	Elevation 2939.1'

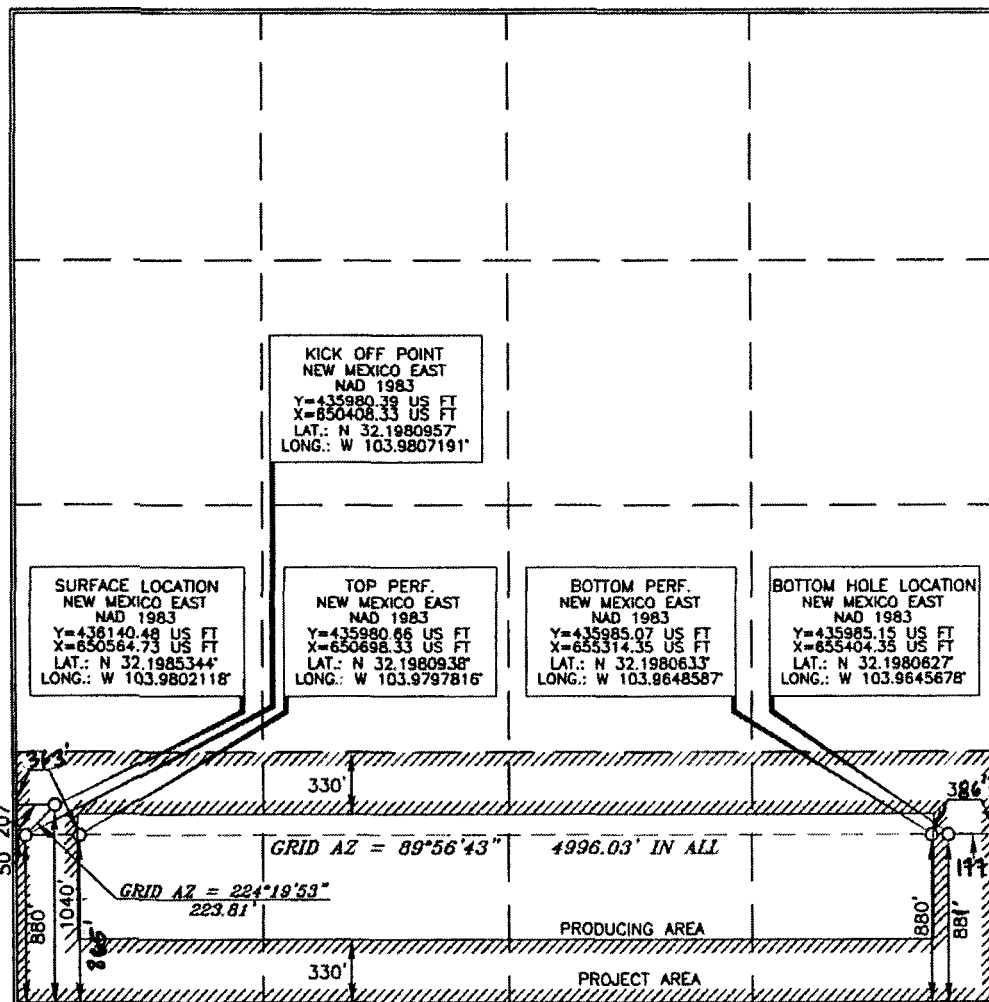
Surface Location

UL or lot no.	Section	Township	Range	Lot Idn	Feet from the	North/South line	Feet from the	East/West line	County
M	22	24 SOUTH	29 EAST, N.M.P.M.		1040'	SOUTH	207'	WEST	EDDY

Bottom Hole Location If Different From Surface

UL or lot no.	Section	Township	Range	Lot Idn	Feet from the	North/South line	Feet from the	East/West line	County
P	22	24 SOUTH	29 EAST, N.M.P.M.		880' 881'	SOUTH	880' 881'	EAST	EDDY
Dedicated Acres 160	Joint or Infill Y	Consolidation Code	Order No.	BP- 880 FSL 386 FEL TP- 865 FSL 363 FWL					

No allowable will be assigned to this completion until all interests have been consolidated or a non-standard unit has been approved by the division.



OPERATOR CERTIFICATION

I hereby certify that the information contained herein is true and complete to the best of my knowledge and belief, and that this organization either owns a working interest or unleased mineral interest in the land including the proposed bottom hole location or has a right to drill this well at this location pursuant to a contract with an owner of such a mineral or working interest, or to a voluntary pooling agreement or a compulsory pooling order heretofore entered by the Division.

Signature: **Jana Mendiola** Date: **12/1/16**
Printed Name: **Jana Mendiola**
E-mail Address: **jana-mendiola@oxy.com**

SURVEYOR CERTIFICATION

I hereby certify that the location shown on this plat was plotted from 1000' sides of actual surveys made by me or under my supervision, and that the same is true and correct to the best of my belief.

Date of Survey: **SEPTEMBER 6, 2016**
Signature and Seal of Professional Land Surveyor: **Terry J. Abel**
Certificate Number: **15079**