

UNITED STATES
DEPARTMENT OF THE INTERIOR
BUREAU OF LAND MANAGEMENTCarlsbad Field Office
QCD ArtesiaFORM APPROVED
OMB NO. 1004-0135
Expires: July 31, 2010**SUNDRY NOTICES AND REPORTS ON WELLS**
Do not use this form for proposals to drill or to re-enter an abandoned well. Use form 3160-3 (APD) for such proposals.**SUBMIT IN TRIPLICATE - Other instructions on reverse side.**

1. Type of Well <input checked="" type="checkbox"/> Oil Well <input type="checkbox"/> Gas Well <input type="checkbox"/> Other		5. Lease Serial No. NMLC061862
2. Name of Operator DEVON ENERGY PRODUCTION CO LP		6. If Indian, Allottee or Tribe Name
Contact: CHANCE BLAND Email: chance.bland@devn.com		7. If Unit or CA/Agreement, Name and/or No. NMMN134248
3a. Address 333 WEST SHERIDAN AVE OKLAHOMA CITY, OK 73102	3b. Phone No. (include area code) Ph: 405-228-8593	8. Well Name and No. COTTON DRAW 14 FED COM 1H
4. Location of Well (Footage, Sec., T., R., M., or Survey Description) Sec 14 T25S R31E NWNW 330FNL 1150FWL 32.136755 N Lat, 103.753498 W Lon		9. API Well No. 30-015-42091-00-S1
		10. Field and Pool, or Exploratory PADUCA UNKNOWN
		11. County or Parish, and State EDDY COUNTY, NM

12. CHECK APPROPRIATE BOX(ES) TO INDICATE NATURE OF NOTICE, REPORT, OR OTHER DATA

TYPE OF SUBMISSION	TYPE OF ACTION			
<input checked="" type="checkbox"/> Notice of Intent	<input type="checkbox"/> Acidize	<input type="checkbox"/> Deepen	<input type="checkbox"/> Production (Start/Resume)	<input type="checkbox"/> Water Shut-Off
<input type="checkbox"/> Subsequent Report	<input type="checkbox"/> Alter Casing	<input type="checkbox"/> Fracture Treat	<input type="checkbox"/> Reclamation	<input type="checkbox"/> Well Integrity
<input type="checkbox"/> Final Abandonment Notice	<input type="checkbox"/> Casing Repair	<input type="checkbox"/> New Construction	<input type="checkbox"/> Recomplete	<input checked="" type="checkbox"/> Other
	<input type="checkbox"/> Change Plans	<input type="checkbox"/> Plug and Abandon	<input type="checkbox"/> Temporarily Abandon	Surface Commingling
	<input type="checkbox"/> Convert to Injection	<input type="checkbox"/> Plug Back	<input type="checkbox"/> Water Disposal	

13. Describe Proposed or Completed Operation (clearly state all pertinent details, including estimated starting date of any proposed work and approximate duration thereof. If the proposal is to deepen directionally or recompleat horizontally, give subsurface locations and measured and true vertical depths of all pertinent markers and zones. Attach the Bond under which the work will be performed or provide the Bond No. on file with BLM/BIA. Required subsequent reports shall be filed within 30 days following completion of the involved operations. If the operation results in a multiple completion or recompleat in a new interval, a Form 3160-4 shall be filed once testing has been completed. Final Abandonment Notices shall be filed only after all requirements, including reclamation, have been completed, and the operator has determined that the site is ready for final inspection.)

Devon Energy Prod Co. Lp respectfully requests for a Central Tank Battery and a Surface Commingle for the following wells.

Cotton Draw 14 Fed Com 1H NW/NW Sec. 14, T25S, R31E 30-015-42091 Paduca; Bone Spring (O) ✓
NMMN 0000503, NMLC-061862

Cotton Draw 14 Fed Com 2H NE NW Sec. 14, T25S, R31E 30-015-42092 Paduca; Bone Spring (O)
NMMN 0000503, NMLC-061862

Cotton Draw 14 Fed 3H NE/NE Sec. 14, T25S, R31E 30-015-42504 Paduca; Bone Spring (O) NMLC ✓
0061862

BUREAU OF LAND MANAGEMENT
ARTESIA DISTRICT

JAN 11 2017

RECEIVED

14. I hereby certify that the foregoing is true and correct. Electronic Submission #347653 verified by the BLM Well Information System For DEVON ENERGY PRODUCTION CO LP, sent to the Carlsbad Committed to AFMSS for processing by PRISCILLA PEREZ on 08/12/2016 (16PP2005SE)	
Name (Printed/Typed) CHANCE BLAND	Title REG PROF
Signature (Electronic Submission)	Date 08/11/2016

THIS SPACE FOR FEDERAL OR STATE OFFICE USE

Approved By <i>J.D. Whitlock</i>	Title <i>TLPE7</i>	Date <i>1/5/17</i>
Conditions of approval, if any, are attached. Approval of this notice does not warrant or certify that the applicant holds legal or equitable title to those rights in the subject lease which would entitle the applicant to conduct operations thereon.		Office <i>CFO</i>

Title 18 U.S.C. Section 1001 and Title 43 U.S.C. Section 1212, make it a crime for any person knowingly and willfully to make to any department or agency of the United States any false, fictitious or fraudulent statements or representations as to any matter within its jurisdiction.

**** BLM REVISED ** BLM REVISED ** BLM REVISED ** BLM REVISED ** BLM REVISED ****

Additional data for EC transaction #347653 that would not fit on the form

32. Additional remarks, continued

Cotton Draw 14 Fed 4H NE/NE Sec. 14, T25S, R31E 30-015-42505 Paduca; Bone Spring (O) NMLC 0061862 ✓

The central tank battery is located at the Cotton Draw 14 in NE/4 NW/4 of Sec. 14 25S 32E in Lea County, New Mexico. The production from each well will flow through an individual dedicated three phase separator with measurement for all three phase. The measurement devices are as follows: 1) Oil measurement is a Micro Motion Coriolis Meter, 2) Water measurement is a Magnetic flow meter, 3) Gas measurement is an Orifice meter tube with EFM. All water is to be commingled and sent to the water tanks. Gas recovered from the ULPS via the VRU will be allocated back to each well utilizing a percentage of each wells monthly oil production.

A total of four (4) production wells will flow into the COTTON DRAW 14 Battery. All oil from all four wells will commingle into a common header after measured by individual 3 phase separators. The commingled oil will then be refined by a dedicated heater treater.

The COTTON DRAW 14 Battery will have four (4) oil storage tanks for these wells. Measurement is done through a LACT unit utilizing a SMITH PD METER. LACT Meter number provided upon receipt. All commingled gas will be sold through a Federal Measurement Point on location. Oil, gas, and water volumes from each well producing to this battery will be determined by using individual metered separators.

Attachments Deliverables

APPLICATION FOR A CENTRAL TANK BATTERY\OFF LEASE MEASUREMENT, SALES, & STORAGE

Proposal for Cotton Draw 14 Fed Wells:

Devon Energy Production Company, LP is requesting approval for a Central Tank Battery\Off Lease Measurement, Sales, & Storage for the following wells:

Federal Lease NMLC061862, NMNM0000503, CA NMNM 134248 (12.5%)

Well Name	Location	API#	Pool 96641	BOPD	OG	MCFPD	BTU
Cotton Draw 14 Fed Com 1H	Sec. 14, T25S, R31E	30-015-42091	Paduca; Bone Spring (O)	141	43	572	1288
Cotton Draw 14 Fed Com 2H	Sec. 14, T25S, R31E	30-015-42092	Paduca; Bone Spring (O)	148	44	623	1288

Federal Lease NMLC061862, (12.5%)

Well Name	Location	API#	Pool 96641	BOPD	OG	MCFPD	BTU
Cotton Draw 14 Fed 3H	Sec. 14, T25S, R31E	30-015-42504	Paduca; Bone Spring (O)	229	44	1048	1288
Cotton Draw 14 Fed 4H	Sec. 14, T25S, R31E	30-015-42505	Paduca; Bone Spring (O)	234	44	534	1288

***All numbers are proposed number.**

Attached is a map that displays the federal leases and well locations in Sec. 14, T25S, R31E & Sec. The BLM's interest in all four wells is 12.5%

Oil & Gas metering:

The central tank battery is located at the Cotton Draw 14 in NE/4 NW/4 of Sec. 14 25S 32E in Lea County, New Mexico. The production from each well will flow through an individual dedicated three phase separator with measurement for all three phase. The measurement devices are as follows: 1) Oil measurement is a Micro Motion Coriolis Meter, 2) Water measurement is a Magnetic flow meter, 3) Gas measurement is an Orifice meter tube with EFM. All water is to be commingled and sent to the water tanks. Gas recovered from the ULPS via the VRU will be allocated back to each well utilizing a percentage of each wells monthly oil production.

A total of four (4) production wells will flow into the COTTON DRAW 14 Battery. All oil from all four wells will commingle into a common header after measured by individual 3 phase separators. The commingled oil will then be refined by a dedicated heater treater.

The COTTON DRAW 14 Battery will have four (4) oil storage tanks for these wells. Measurement is done through a LACT unit utilizing a SMITH PD METER. LACT Meter **number provided upon receipt**. All commingled gas will be sold through a Federal Measurement Point on location. Oil, gas, and water volumes from each well producing to this battery will be determined by using individual metered separators.

The Cotton Draw 14 Fed Com 1H flows directly to a dedicated three phase separator where all 3 phases are separated and metered. Gas flows through the gas allocation meter (**number provided upon receipt**), then combines with the gas from the other wells and is measured by the Federal Measurement Point Meter (**number provided upon receipt**). Oil is metered with a Micro Motion Coriolis Meter (**number provided upon receipt**). After measurement, the oil combines with the Cotton Draw 14 Fed Com 2H and goes to a heater treater for further refinement. Refined oil then dumps to a common ULPS where it combines with oil from the Cotton Draw 14 Fed 3H and Cotton Draw 14 Fed 4H wells and to the 4 oil storage tanks where it can be sold through a LACT.

The Cotton Draw 14 Fed Com 2H flows directly to a dedicated three phase separator where all 3 phases are separated and metered. Gas flows through the gas allocation meter (**number provided upon receipt**), then combines with the gas from the other wells and is measured by the Federal Measurement Point Meter (**number provided upon receipt**). Oil is metered with a Micro Motion Coriolis Meter (**number provided upon receipt**). After measurement, the oil combines with the Cotton Draw 14 Fed Com 2H and goes to a heater treater for further refinement. Refined oil then dumps to a common ULPS where it combines with oil from the Cotton Draw 14 Fed 3H and Cotton Draw 14 Fed 4H wells and to the 4 oil storage tanks where it can be sold through a LACT.

The Cotton Draw 14 Fed 3H flows directly to a dedicated three phase separator where all 3 phases are separated and metered. Gas flows through the gas allocation meter (**number provided upon receipt**), then combines with the gas from the other wells and is measured by the Federal Measurement Point Meter (**number provided upon receipt**). Oil is metered with a Micro Motion Coriolis Meter (**number provided upon receipt**). After measurement, the oil combines with the Cotton Draw 14 Fed 4H and goes to a heater treater for further refinement. Refined oil then dumps to a common ULPS where it combines with oil from the Cotton Draw 14 Fed Com 1H and Cotton Draw 14 Fed Com 2H wells and to the 4 oil storage tanks where it can be sold through a LACT.

The Cotton Draw 14 Fed 4H flows directly to a dedicated three phase separator where all 3 phases are separated and metered. Gas flows through the gas allocation meter (**number provided upon receipt**), then combines with the gas from the other wells and is measured by the Federal Measurement Point Meter (**number provided upon receipt**). Oil is metered with a Micro Motion Coriolis Meter (**number provided upon receipt**). After measurement, the oil combines with the Cotton Draw 14 Fed 3H and goes to a heater treater for further refinement. Refined oil then dumps to a common ULPS where it combines with oil from the Cotton Draw 14 Fed Com 1H and Cotton Draw 14 Fed Com 2H wells and to the 4 oil storage tanks where it can be sold through a LACT.

A free water knockout is used to capture emulsified oil in the water stream from the 3 phase separators. Over time, oil will build up in the free water knockout and dump into the same oil header that the heater treater dump lines are connected into which feeds the ULPS. This provides recovery of small volumes of oil that were not separated at the 3 phase separator and ensures that the oil does not enter the water storage tanks.

Oil production will be allocated on a daily basis based on the Micro Motion Coriolis Meter for each well. The total sales gas production will be metered by the Federal Measurement Point (to be specified). Gas allocation to each well is calculated by determining the percentage contribution that each well produced on a daily basis via the individual well gas meters and multiplying the percentage by the total gas sales volume. These meters will be calibrated on a regular basis per API, NMOCD and BLM specifications. The BLM and OCD will be notified of any future changes in the facilities.

Process and Flow Descriptions:

The flow of produced fluids is shown in detail on the enclosed Process Flow Diagram, along with a description of each vessel and map which shows the lease boundaries, location of wells, facility, and gas sales meter. The proposed commingling is appropriate based on the BLM's guidance in IM 2013-152. The proposed commingling will maximize the ultimate recovery of oil and/or gas from the federal leases and will reduce environmental impacts by minimizing surface disturbance and emissions. The proposed commingling will reduce operating expenses, as well as, not adversely affect federal royalty income, production accountability, or the distribution of royalty.

Devon Energy Production Company, LP understands the requested approval will not constitute the granting of any right-of-way or construction rights not granted by the lease instrument.

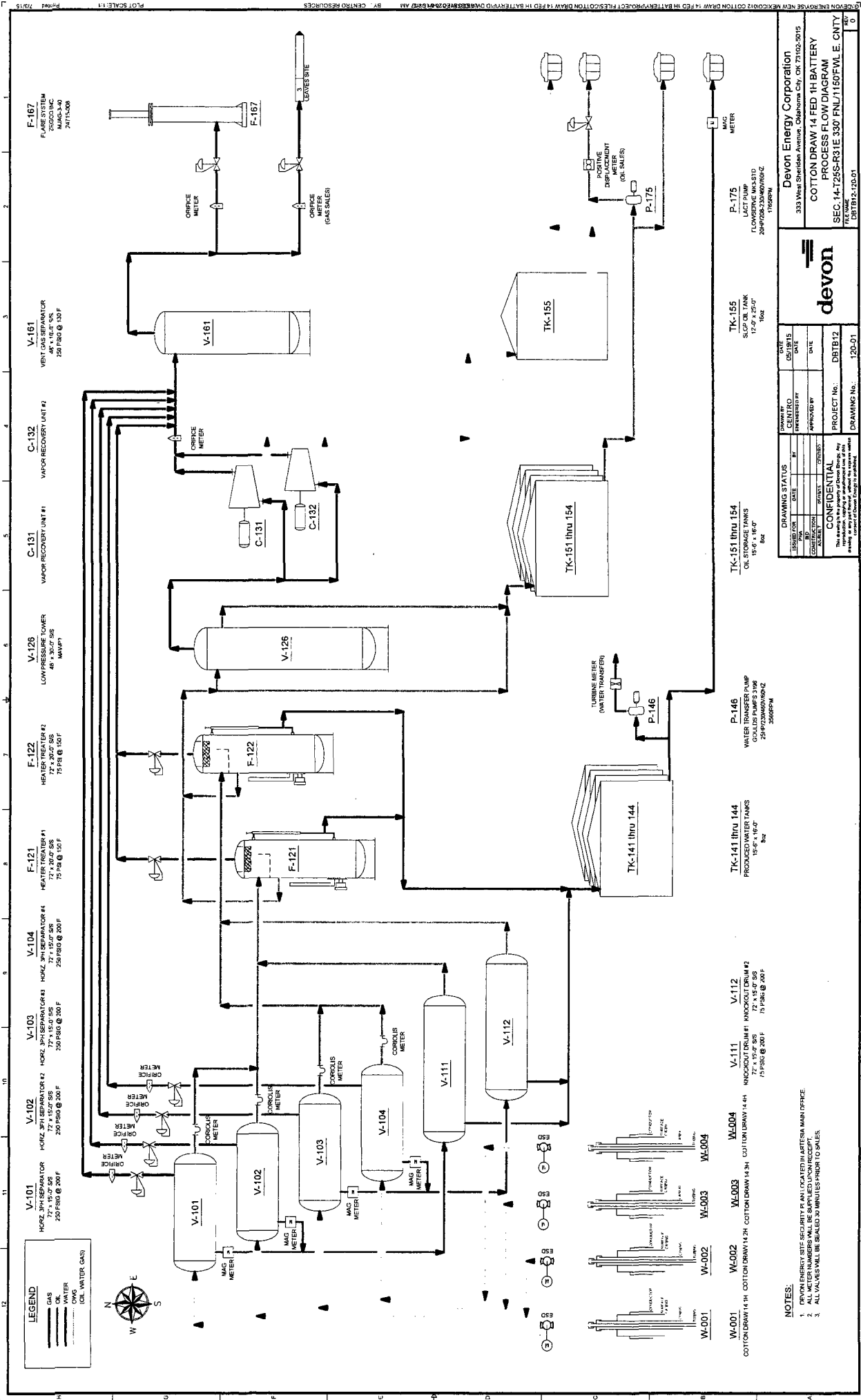
Working, royalty, and overriding interest owners are not identical and have been notified of this proposal via certified mail (see attached).

Signed: 

Printed Name:

Title: ENGINEER

Date: 08.11.16



NOTES:

- DEVON ENERGY SITE SECURITY PLAN LOCATED IN ARTESIA MAIN OFFICE.
- ALL VALVES SHALL BE SEALED IN MINUTES PRIOR TO SALES.

DRAWING STATUS		DATE		BY	
DESIGNED	CHECKED	DATE	DATE	BY	BY

CONFIDENTIAL

This drawing is the property of Devon Energy. Any reproduction or use of this drawing without the written permission of Devon Energy is prohibited.

W-001 COTTON DRAW 14 1H COTTON DRAW 14 2H COTTON DRAW 14 3H COTTON DRAW 14 4H

W-002 COTTON DRAW 14 2H COTTON DRAW 14 3H COTTON DRAW 14 4H

W-003 COTTON DRAW 14 3H COTTON DRAW 14 4H

W-004 COTTON DRAW 14 4H

V-101 HORIZ. 3PH SEPARATOR 77" x 15'-0" SS 250 PSIG @ 200 F

V-102 HORIZ. 3PH SEPARATOR #2 77" x 15'-0" SS 250 PSIG @ 200 F

V-103 HORIZ. 3PH SEPARATOR #3 77" x 15'-0" SS 250 PSIG @ 200 F

V-104 HORIZ. 3PH SEPARATOR #4 77" x 15'-0" SS 250 PSIG @ 200 F

F-101 HEATER TREATER #1 77" x 20'-0" SS 175 PSIG @ 150 F

F-102 HEATER TREATER #2 77" x 20'-0" SS 175 PSIG @ 150 F

F-103 HEATER TREATER #3 77" x 20'-0" SS 175 PSIG @ 150 F

F-104 HEATER TREATER #4 77" x 20'-0" SS 175 PSIG @ 150 F

V-111 VERTICAL 3PH SEPARATOR 77" x 15'-0" SS 175 PSIG @ 200 F

V-112 VERTICAL 3PH SEPARATOR 77" x 15'-0" SS 175 PSIG @ 200 F

V-126 LOW PRESSURE TOWER 48" x 30'-0" SS MANNING

C-131 VAPOR RECOVERY UNIT #1

C-132 VAPOR RECOVERY UNIT #2

V-161 VINYL GAS SEPARATOR 48" x 10'-0" SS 250 PSIG @ 150 F

F-167 FLARE SYSTEM 26000 BHP 24" x 10'-0" SS 24" x 10'-0" SS

TK-141 thru 144 PRODUCED WATER TANKS 15'-6" x 18'-0" SS

TK-151 thru 154 OIL STORAGE TANKS 15'-6" x 18'-0" SS

TK-155 SLIP OIL TANK 17'-0" x 18'-0" SS

P-146 WATER TRANSFER PUMP 3500 GPM 2500 PSIG @ 200 F

P-175 LACT PUMP 1000 GPM 2500 PSIG @ 200 F

MAG METER

ORIFICE METER

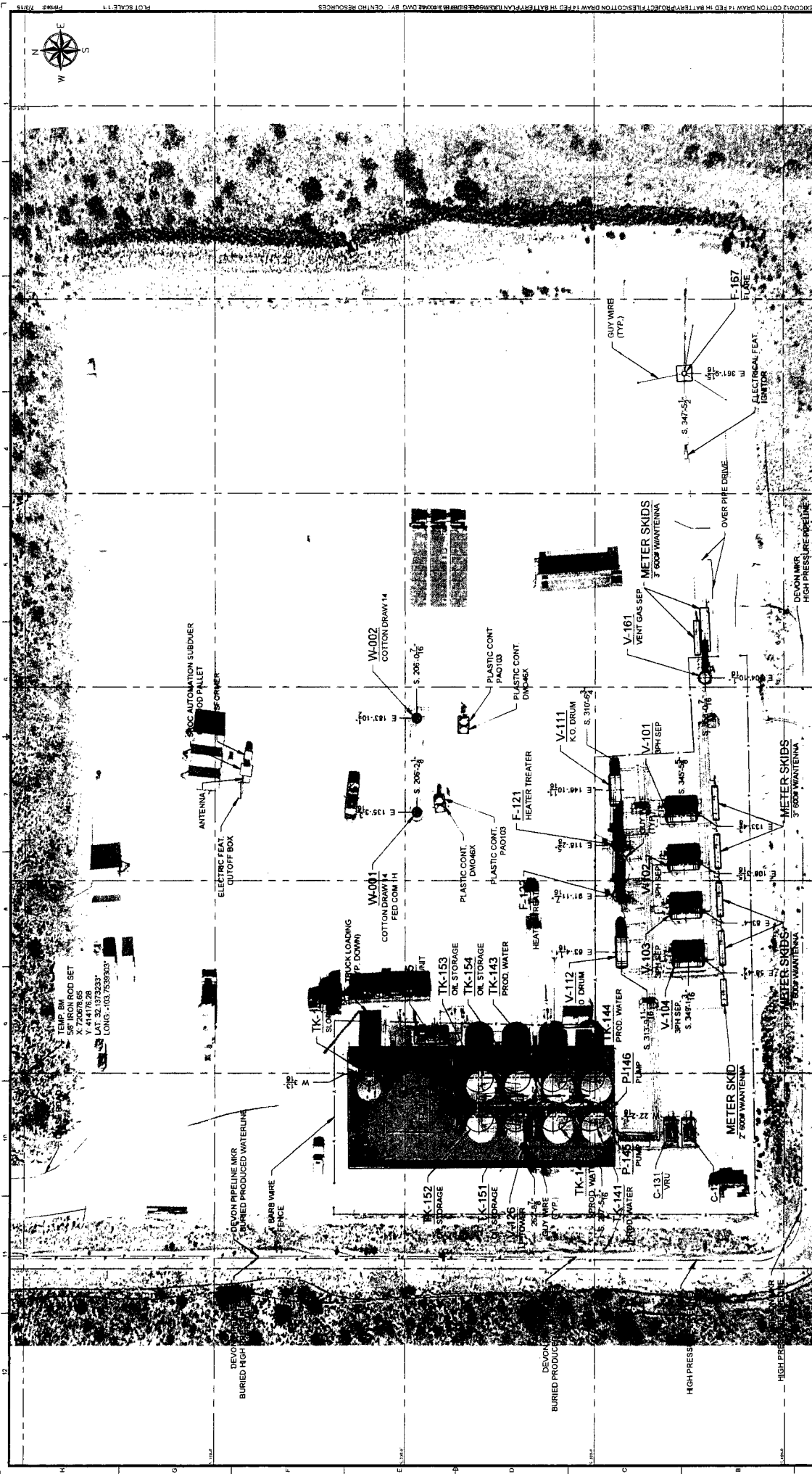
CORIOLIS METER

DISPLACEMENT METER (OIL SALES)

Devon Energy Corporation
 333 West Sheridan Avenue, Oklahoma City, OK 73102-5915

COTTON DRAW 14 FED 1H BATTERY
PROCESS FLOW DIAGRAM
 SEC. 14-225S-R31E 330' FN/1150'FWL E. CNTY

DRAWING No. 120-01
DATE 08/19/15



NOTES:

- [illegible]

DRAWING STATUS		ISSUED FOR		DATE	ENGINEER BY	DATE	APPROVED BY	DATE	PROJECT NO.	DWTB12	DRAWING NO.	100-02
DESIGNED BY	DATE	DESIGNED BY	DATE	DESIGNED BY	DATE	DESIGNED BY	DATE	DESIGNED BY	DATE	DESIGNED BY	DATE	DESIGNED BY
CONSTRUCTION	DATE	CONSTRUCTION	DATE	CONSTRUCTION	DATE	CONSTRUCTION	DATE	CONSTRUCTION	DATE	CONSTRUCTION	DATE	CONSTRUCTION
AS-BUILT	DATE	AS-BUILT	DATE	AS-BUILT	DATE	AS-BUILT	DATE	AS-BUILT	DATE	AS-BUILT	DATE	AS-BUILT

CONFIDENTIAL

This drawing is the property of Crown Energy. Any reproduction, copying or unauthorized use of this drawing, in any form, without the express written permission of Crown Energy, is prohibited.

Devon Energy Corporation
333 West Sheridan Avenue, Oklahoma City, OK 73102-5015
COTTON DRAW 14 FED 1H BATTERY
PLOT PLAN

FILE NAME
DBTB12-100-02

SESW SESE
25S 31E
NENW NENE

SESW SESE
NENW NENE

SESW SESE
NENW NENE

SESW SESE
NENW NENE

SESW SESE
NENW NENE

SESW SESE
NENW NENE

SESW SESE
NENW NENE

SESW SESE
NENW NENE

SESW SESE
NENW NENE

SESW SESE
NENW NENE

SESW SESE
NENW NENE

SESW SESE
NENW NENE

SESW SESE
NENW NENE

SESW SESE
NENW NENE

SESW SESE
NENW NENE

SESW SESE
NENW NENE

SESW SESE
NENW NENE

SESW SESE
NENW NENE

SESW SESE
NENW NENE

SESW SESE
NENW NENE

SESW SESE
NENW NENE

SESW SESE
NENW NENE

SESW SESE
NENW NENE

SESW SESE
NENW NENE

SESW SESE
NENW NENE

SESW SESE
NENW NENE

SESW SESE
NENW NENE

SESW SESE
NENW NENE

SESW SESE
NENW NENE

SESW SESE
NENW NENE

SESW SESE
NENW NENE

SESW SESE
NENW NENE

SESW SESE
NENW NENE

SESW SESE
NENW NENE

SESW SESE
NENW NENE

SESW SESE
NENW NENE

SESW SESE
NENW NENE

SESW SESE
NENW NENE

SESW SESE
NENW NENE

SESW SESE
NENW NENE

SESW SESE
NENW NENE

SESW SESE
NENW NENE

SESW SESE
NENW NENE

SESW SESE
NENW NENE

SESW SESE
NENW NENE

SESW SESE
NENW NENE

SESW SESE
NENW NENE

SESW SESE
NENW NENE

SESW SESE
NENW NENE

SESW SESE
NENW NENE

SESW SESE
NENW NENE

SESW SESE
NENW NENE

SESW SESE
NENW NENE

SESW SESE
NENW NENE

SESW SESE
NENW NENE

SESW SESE
NENW NENE

SESW SESE
NENW NENE

SESW SESE
NENW NENE

SESW SESE
NENW NENE

SESW SESE
NENW NENE

SESW SESE
NENW NENE

SESW SESE
NENW NENE

SESW SESE
NENW NENE

SESW SESE
NENW NENE

SESW SESE
NENW NENE

SESW SESE
NENW NENE

SESW SESE
NENW NENE

SESW SESE
NENW NENE

COTTON DRAW 14H WELLS

Eddy Co, New Mexico

This map is for illustrative purposes only and is neither a legally recorded map nor a survey and it not intended to be used as one. Green lines show well and lease boundaries. The location of any kind regarding this map.

NAD 1927 StatePlane New Mexico East FIPS 3001

Datum: North American 1927; Units: FootUS

Created by: duncam2

Map is current as of 7/14/2016

0 250 500 1,000 Feet
1 in. = 1,041.7 feet



Surface Hole

Tank Battery

Central Delivery

Project Area

Flow Line

Drillable Leasehold

USA NMLC 061862

USA NMNM 000503

**DEPARTMENT OF THE INTERIOR
BUREAU OF LAND MANAGEMENT
CASE RECORDATION
(MASS) Serial Register Page**

Run Time: 09:48 AM

Page 1 of 2

Run Date: 07/12/2016

01 02-25-1920;041STAT0437;30USC226

Case Type 311111: O&G LSE NONCOMP PUB LAND

Commodity 459: OIL & GAS

Case Disposition: AUTHORIZED

Total Acres

2,360.800

Serial Number

NMNM-- 0 000503

				Serial Number: NMNM-- 0 000503	
Name & Address				Int Rel	% Interest
CHEVRON USA INC	6301 DEAUVILLE	MIDLAND TX 797062964	LESSEE		50.000000000
DEVON ENERGY PROD CO LP	333 W SHERIDAN AVE	OKLAHOMA CITY OK 731025010	LESSEE		50.000000000
XTO ENERGY INC	810 HOUSTON ST #2000	FT WORTH TX 761026298	OPERATING RIGHTS		0.000000000

Serial Number: NMNM-- 0 000503							
Mer Twp	Rng	Sec	STyp	SNr Suff	Subdivision	District/Field Office	Mgmt Agency
23 0250S	0310E	001	ALIQ		S2N2,S2;	CARLSBAD FIELD OFFICE	BUREAU OF LAND MGMT
23 0250S	0310E	001	LOTS		1,2,3,4;	CARLSBAD FIELD OFFICE	BUREAU OF LAND MGMT
23 0250S	0310E	010	ALIQ		E2SE,SWSE;	CARLSBAD FIELD OFFICE	BUREAU OF LAND MGMT
23 0250S	0310E	011	ALIQ		ALL;	CARLSBAD FIELD OFFICE	BUREAU OF LAND MGMT
23 0250S	0310E	012	ALIQ		SW,N2;	CARLSBAD FIELD OFFICE	BUREAU OF LAND MGMT
23 0250S	0310E	014	ALIQ		NW;	CARLSBAD FIELD OFFICE	BUREAU OF LAND MGMT
23 0250S	0310E	015	ALIQ		NE,E2W2;	CARLSBAD FIELD OFFICE	BUREAU OF LAND MGMT

Relinquished/Withdrawn Lands

Serial Number: NMNM-- 0 000503

23 0250S	0310E	715	FF		SWSW,SEGR;	CARLSBAD FIELD OFFICE	BUREAU OF LAND MGMT
23 0250S	0310E	715	FF	02	W2NW,NWSW,ASGN;	CARLSBAD FIELD OFFICE	BUREAU OF LAND MGMT
23 0250S	0310E	710	FF		NWSE ASGN;	CARLSBAD FIELD OFFICE	BUREAU OF LAND MGMT

Serial Number: NMNM-- 0 000503					
Act Date	Code	Action	Action Remark	Pending Office	
09/26/1949	124	APLN RECD			
02/01/1950	237	LEASE ISSUED			
02/01/1950	496	FUND CODE	05;145003		
02/01/1950	530	RLTY RATE - 12 1/2%			
02/01/1950	868	EFFECTIVE DATE			
08/01/1952	570	CASE SEGREGATED BY ASGN	INTO NMNM0503-A;		
07/27/1958	700	LEASE SEGREGATED	INTO NMNM052869;		
07/28/1958	232	LEASE COMMITTED TO UNIT	NMNM70928X;COTTON DRA		
07/28/1958	501	REFERENCE NUMBER	14-08-001-5247		
01/01/1960	570	CASE SEGREGATED BY ASGN	INTO NMNM0503-B;		
02/01/1961	660	MEMO OF 1ST PROD-ALLOC			
07/22/1969	500	GEOGRAPHIC NAME	UNDEFINED FIELD;		
07/22/1969	510	KMA CLASSIFIED			
05/21/1970	315	RENTAL RATE DET/ADJ	\$1.00;		
05/15/1987	974	AUTOMATED RECORD VERIF	BFM/MLO		
08/04/1987	963	CASE MICROFILMED/SCANNED	CNUM 100,197 DS		
03/27/1991	817	MERGER RECOGNIZED	HONDO/PAULEY		
03/27/1991	940	NAME CHANGE RECOGNIZED	PAULEY/HONDO O&G		
03/27/1991	974	AUTOMATED RECORD VERIF	GLC/MT		
09/09/1991	140	ASGN FILED	TEXACO OILS/EXPL&PROD		
12/17/1991	139	ASGN APPROVED	EFF 10/01/91;		
12/17/1991	974	AUTOMATED RECORD VERIF	AR/CG		
08/14/1992	140	ASGN FILED	HONDO/DEVON ENERGY		
10/29/1992	139	ASGN APPROVED	EFF 09/01/92;		
10/29/1992	974	AUTOMATED RECORD VERIF	BCO/JS		

NO WARRANTY IS MADE BY BLM FOR USE OF THE DATA FOR PURPOSES NOT INTENDED BY BLM

**BUREAU OF LAND MANAGEMENT
CASE RECORDATION
(LIVE) SERIAL REGISTER PAGE**

Run Date/Time: 01/05/17 10:19 AM

Page 1 of 2

01 02-25-1920;041STAT0437;30USC226

Total Acres
1,720.000

Serial Number
NMLC-- 0 061862

Case Type 311111: O&G LSE NONCOMP PUB LAND

Commodity 459: OIL & GAS

Case Disposition: AUTHORIZED Case File Juris:

Serial Number: NMLC-- 0 061862

Name & Address	Int Rel	%Interest
CHEVRON USA INC 6301 DEAUVILLE	MIDLAND TX 797062964	LESSEE 50.000000000
DEVON ENERGY PROD CO LP 333 W SHERIDAN AVE	OKLAHOMA CITY OK 731025010	LESSEE 50.000000000
XTO ENERGY INC 810 HOUSTON ST #2000	FT WORTH TX 761026298	OPERATING RIGHTS 0.000000000

Serial Number: NMLC-- 0 061862

Mer Twp	Rng	Sec	SType	Nr Suff	Subdivision	District/Resource Area	County	Mgmt Agency
23	0250S	0310E	012	ALIQ	SE;	CARLSBAD FIELD OFFICE	EDDY	BUREAU OF LAND MGMT
23	0250S	0310E	013	ALL	ENTIRE SECTION	CARLSBAD FIELD OFFICE	EDDY	BUREAU OF LAND MGMT
23	0250S	0310E	014	ALIQ	NE,S2;	CARLSBAD FIELD OFFICE	EDDY	BUREAU OF LAND MGMT
23	0250S	0310E	015	ALIQ	NESE,S2SE;	CARLSBAD FIELD OFFICE	EDDY	BUREAU OF LAND MGMT
23	0250S	0310E	023	ALIQ	N2;	CARLSBAD FIELD OFFICE	EDDY	BUREAU OF LAND MGMT

Serial Number: NMLC 0061862

Relinquished/Withdrawn Lands

23 0250S 0310E 715	FF	NWSE ASGN;	CARLSBAD FIELD OFFICE	EDDY	BUREAU OF LAND MGMT
23 0250S 0310E 721	FF	N2NE,N2NW,S2N2 ASGN;	CARLSBAD FIELD OFFICE	EDDY	BUREAU OF LAND MGMT

Serial Number: NMLC-- 0 061862

Act Date	Code	Action	Action Remarks	Pending Office
10/02/1943	124	APLN RECD		
06/01/1950	237	LEASE ISSUED		
06/01/1950	496	FUND CODE	05;145003	
06/01/1950	530	RLTY RATE - 12 1/2%		
06/01/1950	868	EFFECTIVE DATE		
08/01/1952	570	CASE SEGREGATED BY ASGN	INTO NMLC061862-A;	
07/28/1958	232	LEASE COMMITTED TO UNIT	NMNM70928X;COTTON DRA	
07/28/1958	660	MEMO OF 1ST PROD-ALLOC	14-08-001-5247	
05/01/1960	570	CASE SEGREGATED BY ASGN	INTO NMLC06186-C;	
01/20/1961	102	NOTICE SENT-PROD STATUS		
02/16/1970	510	KMA CLASSIFIED		
05/21/1970	315	RENTAL RATE DET/ADJ	\$1.00;	
05/01/1987	963	CASE MICROFILMED/SCANNED	CNUM 560,465 DS	
07/29/1988	974	AUTOMATED RECORD VERIF	AR/LO	
03/27/1991	817	MERGER RECOGNIZED	HONDO/PAULEY	
03/27/1991	940	NAME CHANGE RECOGNIZED	PAULEY/HONDO O&G	
03/27/1991	974	AUTOMATED RECORD VERIF	GLC/MT	
09/09/1991	140	ASGN FILED	TEXACO OILS/EXPL&PROD	
12/17/1991	139	ASGN APPROVED	EFF 10/01/91;	
12/17/1991	974	AUTOMATED RECORD VERIF	AR/JS	
08/14/1992	140	ASGN FILED	HONDO O&G/DEVON ENE	
10/30/1992	139	ASGN APPROVED	EFF 09/01/92;	
10/30/1992	974	AUTOMATED RECORD VERIF	TF/JS	
06/30/1993	140	ASGN FILED	DEVON ENE/DEVON CORP	
09/17/1993	139	ASGN APPROVED	EFF 07/01/93;	
09/17/1993	974	AUTOMATED RECORD VERIF	MRR/KRP	
08/01/1997	575	APD FILED		
09/16/1997	576	APD APPROVED	COTTON DRAW UNIT	

**NO WARRANTY IS MADE BY BLM
FOR USE OF THE DATA FOR
PURPOSES NOT INTENDED BY BLM**

**BUREAU OF LAND MANAGEMENT
CASE RECORDATION
(LIVE) SERIAL REGISTER PAGE**

Run Date/Time: 01/05/17 10:29 AM

Page 1 of 1

01 02-25-1920;041STAT0437;30USC181

Total Acres

Serial Number

Case Type 318310: O&G COMMUNITIZATION AGRMT

160.000

NMNM-- - 134246

Commodity 459: OIL & GAS

Case Disposition: AUTHORIZED

Case File Juris: CARLSBAD FIELD OFFICE

Serial Number: NMNM-- - 134246

Name & Address

Int Rel

%Interest

BLM CARLSBAD FO
DEVON ENERGY CORP

620 E GREENE ST
333 W SHERIDAN AVE

CARLSBAD NM 88220
OKLAHOMA CITY OK 731025010

OFFICE OF RECORD
OPERATOR

0.00000000
100.00000000

Serial Number: NMNM-- - 134246

Mer Twp Rng Sec SType Nr Suff Subdivision

District/Resource Area

County

Mgmt Agency

23 0250S 0310E 014 ALIQ

E2W2;

CARLSBAD FIELD OFFICE

EDDY

BUREAU OF LAND MGMT

Serial Number: NMNM-- - 134246

Act Date

Code

Action

Action Remarks

Pending Office

03/01/2014

387

CASE ESTABLISHED

03/01/2014

516

FORMATION

BONE SPRING

03/01/2014

526

ACRES-FED INT 100%

160;100%

03/01/2014

868

EFFECTIVE DATE

/1/ 3001542092

01/05/2015

654

AGRMT PRODUCING

/1/

01/05/2015

658

MEMO OF 1ST PROD-ACTUAL

/1/ MEMO 3/12/15

03/12/2015

643

PRODUCTION DETERMINATION

/1/

Line Nr

Remarks

Serial Number: NMNM-- - 134246

0001 RECAPITULATION EFFECTIVE 3/1/14

0002 TR# LEASE# AC COMM % INT

0003 1 NMLC061862 80 50

0004 2 NMNM0503 80 50

0005 TOTAL 160 100

**BUREAU OF LAND MANAGEMENT
CASE RECORDATION
(LIVE) SERIAL REGISTER PAGE**

Run Date/Time: 01/05/17 10:27 AM

Page 1 of 1

01 02-25-1920;041STAT0437;30USC181

Total Acres

Serial Number

Case Type 318310: O&G COMMUNITIZATION AGRMT

160.000

NMNM-- - 134248

Commodity 459: OIL & GAS

Case Disposition: AUTHORIZED

Case File Juris: CARLSBAD FIELD OFFICE

Serial Number: NMNM-- - 134248

Name & Address

Int Rel

%Interest

BLM CARLSBAD FO	620 E GREENE ST	CARLSBAD NM 88220	OFFICE OF RECORD	0.000000000
DEVON ENERGY CORP	333 W SHERIDAN AVE	OKLAHOMA CITY OK 731025010	OPERATOR	100.000000000

Serial Number: NMNM-- - 134248

Mer Twp	Rng	Sec	SType	Nr	Suff	Subdivision	District/Resource Area	County	Mgmt Agency
23	0250S	0310E	014	ALIQ		W2W2;	CARLSBAD FIELD OFFICE	EDDY	BUREAU OF LAND MGMT

Serial Number: NMNM-- - 134248

Act Date	Code	Action	Action Remarks	Pending Office
03/01/2014	387	CASE ESTABLISHED		
03/01/2014	516	FORMATION	BONE SPRING	
03/01/2014	526	ACRES-FED INT 100%	160;100%	
03/01/2014	868	EFFECTIVE DATE	/1/ 3001542091	
01/06/2015	654	AGRMT PRODUCING	/1/	
01/06/2015	658	MEMO OF 1ST PROD-ACTUAL	/1/ MEMO 3/12/15	
03/12/2015	643	PRODUCTION DETERMINATION	/1/	

Line Nr **Remarks**

Serial Number: NMNM-- - 134248

0001	RECAPITULATION EFFECTIVE 3/1/14			
0002	TR#	LEASE#	AC COMM	% INT
0003	1	NMLC061862	80	50
0004	2	NMNM0503	80	50
0005	TOTAL		160	100

Name1	Int. Type	Name2	Name3	Name4	Street 1	City	State	Postal Code	Cert. Mailing Trk#
-------	-----------	-------	-------	-------	----------	------	-------	-------------	--------------------

Cotton Draw 14 Fed 1H Battery

XTO ENERGY INC	WI	JP MORGAN CHASE DALLAS		PO BOX 730586	DALLAS	TX	75373-0586	92148901527181001742 19
MICHAEL LEE PRUDE	OR			1401 W WASHINGTON AVE	ARTESIA	NM	88210	92148901527181001742 26
BALLARD E SPENCER TRUST INC	OR			PO BOX 6	ARTESIA	NM	88211-0006	92148901527181001742 33
JANICE MENDOZA BRYAN	OR			PO BOX 972	POHNPEI	FM	96941	92148901527181001742 19
BARRY EUGENE BRYAN	OR			PO BOX 207	VIDA	OR	97488	92148901527181001742 40
BRYNNE LEE BRYAN	OR			900 W 14TH ST APT 7	SAN PEDRO	CA	90731-3938	92148901527181001742 57
EDEN MENDOZA BRYAN	OR			31 MEYERS CT	GREENVILLE	SC	29609	92148901527181001742 64
MORRIS E SCHERTZ	OR			PO BOX 2588	ROSWELL	NM	88202-2588	92148901527181001742 71
BETTY JO BRYAN BRADSHAW	OR			PO BOX 761	PLACITAS	NM	87043	92148901527181001742 88
ROLLA R HINKLE III	OR			PO BOX 2292	ROSWELL	NM	88202-2292	92148901527181001742 95
ONRR	RI	ROYALTY MANAGEMENT PROGRAM		PO BOX 25627	DENVER	CO	80225-0627	92148901527181001743 01
MADISON M HINKLE	OR			PO BOX 2292	ROSWELL	NM	88202-2292	92148901527181001743 18
MCCAW PROPERTIES LLC	OR			PO BOX 127	ARTESIA	NM	88211-0376	92148901527181001743 25
FOERTSCH OIL & GAS LP	OR	A NEW MEXICO LIMITED LIABILITY CO	WILLIAM J MCCAW PARTNER	PO BOX 663	MIDLAND	TX	79702	92148901527181001743 23

WC Name	Month	Year	Oil DN Name	Prod
COTTON DRAW 14 FED COM 2H	1	2016	COTTON DRAW 14 FED 1H OIL	4,868.14
COTTON DRAW 14 FED COM 1H	1	2016	COTTON DRAW 14 FED 1H OIL	5,675.23
COTTON DRAW 14 FED 4H	1	2016	COTTON DRAW 14 FED 1H OIL	8,553.69
COTTON DRAW 14 FEDERAL 3H	1	2016	COTTON DRAW 14 FED 1H OIL	6,731.46
COTTON DRAW 14 FED COM 2H	2	2016	COTTON DRAW 14 FED 1H OIL	4,927.35
COTTON DRAW 14 FED COM 1H	2	2016	COTTON DRAW 14 FED 1H OIL	4,355.88
COTTON DRAW 14 FED 4H	2	2016	COTTON DRAW 14 FED 1H OIL	7,382.45
COTTON DRAW 14 FEDERAL 3H	2	2016	COTTON DRAW 14 FED 1H OIL	8,160.82
COTTON DRAW 14 FED COM 2H	3	2016	COTTON DRAW 14 FED 1H OIL	4,349.87
COTTON DRAW 14 FED COM 1H	3	2016	COTTON DRAW 14 FED 1H OIL	4,386.90
COTTON DRAW 14 FED 4H	3	2016	COTTON DRAW 14 FED 1H OIL	6,814.05
COTTON DRAW 14 FEDERAL 3H	3	2016	COTTON DRAW 14 FED 1H OIL	6,817.01
COTTON DRAW 14 FED COM 2H	4	2016	COTTON DRAW 14 FED 1H OIL	4,133.18
COTTON DRAW 14 FED COM 1H	4	2016	COTTON DRAW 14 FED 1H OIL	3,827.80
COTTON DRAW 14 FED 4H	4	2016	COTTON DRAW 14 FED 1H OIL	3,851.68
COTTON DRAW 14 FEDERAL 3H	4	2016	COTTON DRAW 14 FED 1H OIL	6,966.37
COTTON DRAW 14 FED COM 2H	5	2016	COTTON DRAW 14 FED 1H OIL	4,317.06
COTTON DRAW 14 FED COM 1H	5	2016	COTTON DRAW 14 FED 1H OIL	3,888.63
COTTON DRAW 14 FED 4H	5	2016	COTTON DRAW 14 FED 1H OIL	7,149.98
COTTON DRAW 14 FEDERAL 3H	5	2016	COTTON DRAW 14 FED 1H OIL	6,759.40
COTTON DRAW 14 FED COM 2H	12	2015	COTTON DRAW 14 FED 1H OIL	4,779.31
COTTON DRAW 14 FED COM 1H	12	2015	COTTON DRAW 14 FED 1H OIL	4,800.06
COTTON DRAW 14 FED 4H	12	2015	COTTON DRAW 14 FED 1H OIL	7,489.43
COTTON DRAW 14 FEDERAL 3H	12	2015	COTTON DRAW 14 FED 1H OIL	7,144.78

Well ID	WC ID	WC Name	Year	Month	Gas DOI/Unit Name	Gas DN ID	Prod Days	Prod	Flare	Fuel 1
36049	1	COTTON DRAW 14 FED COM 2H	2016	1	COTTON DRAW 14 FED COM 2H	48681	23	17,226	2,239	296
36087	1	COTTON DRAW 14 FED COM 1H	2016	1	COTTON DRAW 14 FED COM 1H	48681	29	24,314	3,160	417
37476	1	COTTON DRAW 14 FED 4H	2016	1	COTTON DRAW 14 FED 4H	48681	29	20,600	2,677	354
37582	1	COTTON DRAW 14 FEDERAL 3H	2016	1	COTTON DRAW 14 FED 3H	48681	21	22,311	2,898	383
36049	1	COTTON DRAW 14 FED COM 2H	2016	2	COTTON DRAW 14 FED COM 2H	48681	29	21,811	1,906	281
36087	1	COTTON DRAW 14 FED COM 1H	2016	2	COTTON DRAW 14 FED COM 1H	48681	29	24,950	2,180	321
37476	1	COTTON DRAW 14 FED 4H	2016	2	COTTON DRAW 14 FED 4H	48681	29	22,424	1,959	289
37582	1	COTTON DRAW 14 FEDERAL 3H	2016	2	COTTON DRAW 14 FED 3H	48681	28	42,940	3,751	553
36049	1	COTTON DRAW 14 FED COM 2H	2016	3	COTTON DRAW 14 FED COM 2H	48681	31	23,888	67	353
36087	1	COTTON DRAW 14 FED COM 1H	2016	3	COTTON DRAW 14 FED COM 1H	48681	31	22,559	64	333
37476	1	COTTON DRAW 14 FED 4H	2016	3	COTTON DRAW 14 FED 4H	48681	29	23,772	67	351
37582	1	COTTON DRAW 14 FEDERAL 3H	2016	3	COTTON DRAW 14 FED 3H	48681	28	34,679	98	513
36049	1	COTTON DRAW 14 FED COM 2H	2016	4	COTTON DRAW 14 FED COM 2H	48681	30	22,378	80	364
36087	1	COTTON DRAW 14 FED COM 1H	2016	4	COTTON DRAW 14 FED COM 1H	48681	30	20,209	72	328
37476	1	COTTON DRAW 14 FED 4H	2016	4	COTTON DRAW 14 FED 4H	48681	22	10,720	38	174
37582	1	COTTON DRAW 14 FEDERAL 3H	2016	4	COTTON DRAW 14 FED 3H	48681	30	39,016	139	634
36049	1	COTTON DRAW 14 FED COM 2H	2016	5	COTTON DRAW 14 FED COM 2H	48681	31	22,538	243	375
36087	1	COTTON DRAW 14 FED COM 1H	2016	5	COTTON DRAW 14 FED COM 1H	48681	31	18,539	200	308
37476	1	COTTON DRAW 14 FED 4H	2016	5	COTTON DRAW 14 FED 4H	48681	25	15,311	165	255
37582	1	COTTON DRAW 14 FEDERAL 3H	2016	5	COTTON DRAW 14 FED 3H	48681	31	36,764	395	612
36049	1	COTTON DRAW 14 FED COM 2H	2015	12	COTTON DRAW 14 FED COM 2H	48681	26	21,687	1,244	270
36087	1	COTTON DRAW 14 FED COM 1H	2015	12	COTTON DRAW 14 FED COM 1H	48681	26	22,667	1,300	283
37476	1	COTTON DRAW 14 FED 4H	2015	12	COTTON DRAW 14 FED 4H	48681	26	27,427	1,573	342
37582	1	COTTON DRAW 14 FEDERAL 3H	2015	12	COTTON DRAW 14 FED 3H	48681	26	32,494	1,864	405

**Bureau of Land Management
Carlsbad Field Office
620 East Greene Street
Carlsbad, New Mexico 88220
575-234-5972**

Devon Energy Production Co.

January 5, 2017

Condition of Approval

Surface commingling, off lease/off CA storage measurement and sales, and alternate method of measurement.

Cotton Draw 14 Fed Com 1H, 2H, 3H & 4H

3001542091, 3001542092, 3001542504 & 3001542505

Lease NMNM0503, NMLC061862, & CA's NMNM134248, NMNM134246

1. This approval is subject to like approval by the New Mexico Oil Conservation Division.
2. This agency shall be notified of any spill or discharge as required by NTL-3A.
3. This agency reserves the right to modify or rescind approval whenever it determines continued use of the approved method may adversely affect the surface or subsurface environments.
4. This approval does not constitute right-of-way approval for any off-lease activities. Within 30 days, an application for right-of-way approval must be submitted to the Realty Section if not already done.
5. Approval for combining production from various sources is a privilege which is granted to lessees for the purpose of aiding conservation and extending the economic life of leases. Applicants should be cognizant that failure to operate in accordance with the provisions outlined in the Authorized Officer's conditions of approval and/or subsequent stipulations or modifications will subject such approval to revocation.
6. Gas measurement for allocation must be measured as per Onshore Order #5 for sales meters.
7. All gas and oil subject to royalty shall be measured as per federal regulations and shall be reported to ONRR as required. All gas which is vented, flared or used on lease shall be reported as per NTL-4A to ONRR. All gas which is vented or flared shall be subject to royalty, unless prior approval was given by the authorized officer.
8. This agency shall be notified of any change in sales method or location of sales point.
9. Additional wells and/or leases require additional commingling approvals.
10. Notify this office 24 Hrs. prior to any meter proving to allow time for an inspector to witness.
11. Approval for alternate method of measurement for oil production. Coriolis meters will be used off 3 phase separators for allocation of oil production and oil will be sold through a common Coriolis LACT meter at facility.