

District I
1625 N. French Dr., Hobbs, NM 88240
Phone: (575) 393-6161 Fax: (575) 393-0720
District II
811 S. First St., Artesia, NM 88210
Phone: (575) 748-1283 Fax: (575) 748-9720
District III
1000 Rio Brazos Road, Aztec, NM 87410
Phone: (505) 334-6178 Fax: (505) 334-6170
District IV
1220 S. St. Francis Dr., Santa Fe, NM 87505
Phone: (505) 476-3460 Fax: (505) 476-3462

State of New Mexico
Energy, Minerals & Natural Resources Department
OIL CONSERVATION DIVISION

1220 South St. Francis Dr. FEB 16 2017
Santa Fe, NM 87505

Form C-102
Revised August 1, 2011
Submit one copy to appropriate
District Office

☐ AMENDED REPORT

RECEIVED

WELL LOCATION AND ACREAGE DEDICATION PLAT

¹ API Number 30-025-43607	² Pool Code 97393	³ Pool Name GRAMA RIDGE; WOLF CAMP, WEST
⁴ Property Code 716265	⁵ Property Name GRAMA RIDGE STATE 8	
⁷ OGRID No. 371127	⁸ Operator Name BLACK MOUNTAIN OPERATING, LLC	
		⁶ Well Number 2H
		⁹ Elevation 3534'

¹⁰ Surface Location

UL or lot no.	Section	Township	Range	Lot Idn	Feet from the	North/South line	Feet from the	East/West line	County
O	8	22 SOUTH	34 EAST, N.M.P.M.		250'	SOUTH	1965'	EAST	LEA

¹¹ Bottom Hole Location If Different From Surface

UL or lot no.	Section	Township	Range	Lot Idn	Feet from the	North/South line	Feet from the	East/West line	County
B	8	22 SOUTH	34 EAST, N.M.P.M.		330'	NORTH	1670'	EAST	LEA

¹² Dedicated Acres	¹³ Joint or Infill	¹⁴ Consolidation Code	¹⁵ Order No.
160.00			

No allowable will be assigned to this completion until all interests have been consolidated or a non-standard unit has been approved by the division.

<p>PROPOSED BOTTOM HOLE LOCATION</p> <p>X= 760,742 NAD 27 Y= 514,792 LAT. 32.412445 LONG. 103.488424</p> <p>X= 801,925 NAD83 Y= 514,853 LAT. 32.412569 LONG. 103.488906</p>	<p>GRAMA RIDGE STATE 8 2H WELL</p> <p>X= 760,477 NAD 27 Y= 510,091 LAT. 32.399529 LONG. 103.489403</p> <p>X= 801,680 NAD83 Y= 510,152 LAT. 32.399553 LONG. 103.489885</p> <p>ELEVATION +3534' NAVD 88</p>	<p>CORNER COORDINATES TABLE (NAD 27)</p> <p>A - Y=515115.64, X=759778.07 B - Y=515133.79, X=782410.14 C - Y=509838.87, X=759808.89 D - Y=509854.60, X=782443.72</p>		<p>¹⁷ OPERATOR CERTIFICATION</p> <p>I hereby certify that the information contained herein is true and complete to the best of my knowledge and belief, and that this organization either owns a working interest or unleased mineral interest in the land including the proposed bottom hole location or has a right to drill this well at this location pursuant to a contract with an owner of such a mineral or working interest, or to a voluntary pooling agreement or a compulsory pooling order heretofore entered by this division.</p> <p>Signature: Denise L. White Date: 2-13-17</p> <p>Printed Name: Denise L. White</p> <p>E-mail Address: denise.white@blackmtm.com</p> <p>¹⁸ SURVEYOR CERTIFICATION</p> <p>I hereby certify that the well location shown on this plat was plotted from field notes of actual surveys made by me or under my supervision, and that the same is true and correct to the best of my belief.</p> <p>Date of Survey: 01-25-2017</p> <p>Signature and Seal of Professional Surveyor: [Signature]</p> <p>Certificate Number: 23006</p>
--	--	--	--	---

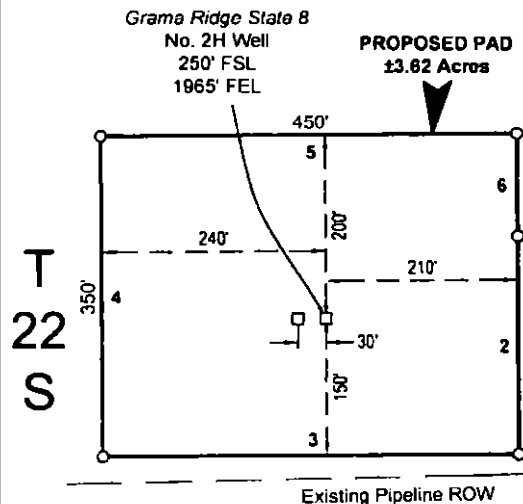
R 34 E

Sec. 8

State of New Mexico
SW/4 SE/4
(±437.53', ±26.52 Rods-
Proposed Access Road)

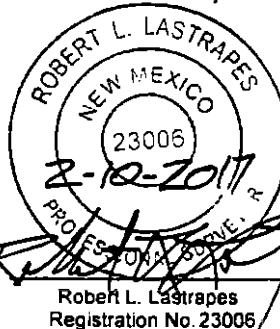
SE/4 SE/4
(±412.32', ±24.99 Rods-
Proposed Access Road)

Future
Grama Ridge State 8
3H & 4H Pad &
Access Road



Sec. 17

FOR THE EXCLUSIVE USE OF
BLACK MOUNTAIN OPERATING, LLC
I, Robert L. Lastrapes, Professional
Surveyor, do hereby state this plat is true
and correct to the best of my knowledge.



NW PAD CORNER		NE PAD CORNER		GRAMA RIDGE STATE 8 NO. 2H WELL	
X=	760,236 NAD 27	X=	760,686 NAD 27	X=	760,477 NAD 27
Y=	510,290	Y=	510,293	Y=	510,091
ELEVATION +3537' NAVD 88		ELEVATION +3537' NAVD 88		LAT.	32.399529
SW PAD CORNER		SE PAD CORNER		LONG.	103.489403
X=	760,238 NAD 27	X=	760,688 NAD 27	X=	801,660 NAD83
Y=	509,940	Y=	509,943	Y=	510,152
ELEVATION +3528' NAVD 88		ELEVATION +3536' NAVD 88		LAT.	32.399653
				LONG.	103.489885
				ELEVATION +3534' NAVD 88	

SURFACE USE PLAT

Page 1 of 2

BLACK MOUNTAIN OPERATING, LLC

PROPOSED PAD & ACCESS ROAD
GRAMA RIDGE STATE 8 NO. 2H WELL
SECTION 8, T22S-R34E
LEA COUNTY, NEW MEXICO

DRAWN BY: KJD		REVISIONS	
PROJ. MGR.: VHV	No. 1	DATE:	REVISED BY:
DATE: 02/07/2017	No.	DATE:	REVISED BY:
FILENAME: T:\2016\2164916\DWG\Grama Ridge State 8 2H_SUP_020317.dwg			



C. H. Fenstermaker & Associates, L.L.C.
135 Regency Sq. Lafayette, LA 70508
Ph. 337-237-2200 Fax. 337-232-3299
www.fenstermaker.com

NOTE:

Please be advised, that while reasonable efforts are made to locate and verify pipelines and anomalies using our standard pipeline locating equipment, it is impossible to be 100 % effective. As such, we advise using caution when performing work as there is a possibility that pipelines and other hazards, such as fiber optic cables, PVC pipelines, etc. may exist undetected on site.

NOTE:

Many states maintain information centers that establish links between those who dig (excavators) and those who own and operate underground facilities (operators). It is advisable and in most states, law, for the contractor to contact the center for assistance in locating and marking underground utilities. For guidance: New Mexico One Call - www.nmonecall.org

DISCLAIMER: At this time, C. H. Fenstermaker & Associates, L.L.C. has not performed nor was asked to perform any type of engineering, hydrological modeling, flood plain, or "No Rise" certification analyses, including but not limited to determining whether the project will impact flood hazards in connection with federal/FEMA, state, and/or local laws, ordinances and regulations. Accordingly, Fenstermaker makes no warranty or representation of any kind as to the foregoing issues, and persons or entities using this information shall do so at their own risk.

FOR THE EXCLUSIVE USE OF
BLACK MOUNTAIN OPERATING, LLC
I, Robert L. Lastrapes, Professional
Surveyor, do hereby state this plat is true
and correct to the best of my knowledge.



CENTERLINE PROPOSED ACCESS ROAD		
COURSE	BEARING	DISTANCE
1	S 89° 36' 36" W	849.85'

PROPOSED PAD		
COURSE	BEARING	DISTANCE
2	S 00° 23' 24" E	237.50'
3	S 89° 36' 36" W	450.00'
4	N 00° 23' 24" W	350.00'
5	N 89° 36' 36" E	450.00'
6	S 00° 23' 24" E	112.50'

SURFACE USE PLAT

Page 2 of 2

BLACK MOUNTAIN OPERATING, LLC

PROPOSED PAD & ACCESS ROAD
GRAMA RIDGE STATE 8 NO. 2H WELL
SECTION 8, T22S-R34E
LEA COUNTY, NEW MEXICO

DRAWN BY: KJD

REVISIONS

PROJ. MGR.: VHV

No. 1

DATE:

REVISED BY:

DATE: 02/07/2017

No.

DATE:

REVISED BY:

FILENAME: T:\2016\2164916\DWG\Grama Ridge State 8 2H_SUP_020317.dwg



C. H. Fenstermaker & Associates, L.L.C.
135 Regency Sq. Lafayette, LA 70508
Ph. 337-237-2200 Fax. 337-232-3299
www.fenstermaker.com