

District I  
1625 N French Dr., Hobbs, NM 88240  
Phone: (575) 393-6161 Fax: (575) 393-0720  
District II  
811 S First St., Artesia, NM 88210  
Phone: (575) 748-1283 Fax: (575) 748-9720  
District III  
1000 Rio Brazos Road, Aztec, NM 87410  
Phone: (505) 334-6178 Fax: (505) 334-6170  
District IV  
1220 S St. Francis Dr., Santa Fe, NM 87505  
Phone: (505) 476-3460 Fax: (505) 476-3462

State of New Mexico  
Energy, Minerals & Natural Resources Department  
OIL CONSERVATION DIVISION  
1220 South St. Francis Dr.  
Santa Fe, NM 87505

Form C-102  
Revised August 1, 2011  
Submit one copy to appropriate  
District Office

FEB 16 2017

☐ AMENDED REPORT

WELL LOCATION AND ACREAGE DEDICATION

<sup>1</sup> API Number 30-025-43608	<sup>2</sup> Pool Code 97393	<sup>3</sup> Pool Name GRAMA RIDGE-WOLF CAMP, WEST
<sup>4</sup> Property Code 316265	<sup>5</sup> Property Name GRAMA RIDGE STATE 8	
<sup>7</sup> OGRID No. 371127	<sup>6</sup> Operator Name BLACK MOUNTAIN OPERATING, LLC	<sup>8</sup> Well Number 3H
		<sup>9</sup> Elevation 3548'

<sup>10</sup> Surface Location

UL or lot no.	Section	Township	Range	Lot Idn	Feet from the	North/South line	Feet from the	East/West line	County
P	8	22 SOUTH	34 EAST, N.M.P.M.		150'	SOUTH	695'	EAST	LEA

<sup>11</sup> Bottom Hole Location If Different From Surface

UL or lot no.	Section	Township	Range	Lot Idn	Feet from the	North/South line	Feet from the	East/West line	County
A	8	22 SOUTH	34 EAST, N.M.P.M.		330'	NORTH	995'	EAST	LEA

<sup>12</sup> Dedicated Acres 160	<sup>13</sup> Joint or Infill	<sup>14</sup> Consolidation Code	<sup>15</sup> Order No.
--------------------------------------	-------------------------------	----------------------------------	-------------------------

No allowable will be assigned to this completion until all interests have been consolidated or a non-standard unit has been approved by the division.

<p><sup>16</sup> PROPOSED BOTTOM HOLE LOCATION</p> <p>X= 761,417 NAD 27 Y= 514,797 LAT. 32.412443 LONG. 103.486237</p> <p>X= 802,600 NAD83 Y= 514,858 LAT. 32.412587 LONG. 103.486719</p> <p>GRAMA RIDGE STATE 8 3H WELL</p> <p>X= 761,748 NAD 27 Y= 510,000 LAT. 32.399251 LONG. 103.485289</p> <p>X= 802,831 NAD83 Y= 510,061 LAT. 32.399375 LONG. 103.485771</p> <p>ELEVATION -3548' NAVD 88</p> <p>CORNER COORDINATES TABLE (NAD 27)</p> <p>A - Y=515115.64, X=759776.67 B - Y=515133.79, X=762410.14 C - Y=509836.67, X=759808.69 D - Y=509854.60, X=762443.72</p>	<p><sup>17</sup> OPERATOR CERTIFICATION</p> <p>I hereby certify that the information contained herein is true and complete to the best of my knowledge and belief, and that this organization either owns a working interest or undivided mineral interest in the land including the proposed bottom hole location or has a right to drill this well at this location pursuant to a contract with an owner of such a mineral or working interest, or to a voluntary pooling agreement or a compulsory pooling order heretofore entered by the division.</p> <p><i>Denise L. White</i> 2-13-17 Signature Date</p> <p>Denise L. White Printed Name</p> <p>denise.white@blackmtn.com E-mail Address</p> <p><sup>18</sup> SURVEYOR CERTIFICATION</p> <p>I hereby certify that the well location shown on this plat was plotted from field notes of actual surveys made by me or under my supervision, and that the same is true and correct to the best of my belief.</p> <p>01-25-2017 Date of Survey</p> <p>Signature and Seal of Professional Surveyor: 23006</p> <p>2-10-2017 Certificate Number</p>
---	--

LEGEND	
	Section Line
	Centerline Access
	Existing Pad/Road
	Section Break
	Proposed Pad
	Existing ROW
	End Monument

R 34 E

Existing Lease Road

Existing Pad

CENTERLINE  
PROPOSED  
ACCESS ROAD  
26' x ±558.27'  
±33.83 Rods  
±0.32 Acres

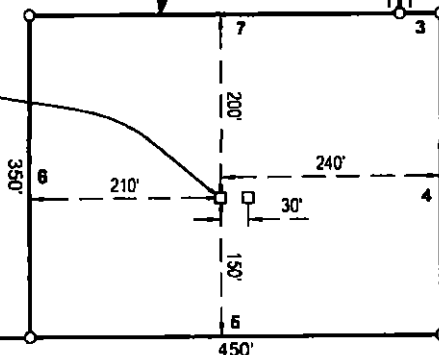
N 31° 38' 30" W 1,053.18'

Sec. 8

SE/4 SE/4

PROPOSED PAD  
±3.62 Acres

Grama Ridge  
State 8  
No. 3H Well  
150' FSL  
695' FEL



FOR THE EXCLUSIVE USE OF  
BLACK MOUNTAIN OPERATING, LLC  
I, Robert L. Lastrapes, Professional  
Surveyor, do hereby state this plat is true  
and correct to the best of my knowledge.

Sec. 17

Existing  
Pipeline ROW

Point of  
Commencement/  
Fnd. 2" Iron Pipe  
w/Cap @ the SE  
Corner of Section 8

NAD 27 NEW MEXICO EAST ZONE



Robert L. Lastrapes  
Registration No. 23006

GRAMA RIDGE STATE 8  
NO. 3H WELL

X=	761,748	NAD 27
Y=	510,000	
LAT.	32.399251	
LONG.	103.485289	
X=	802,931	NAD83
Y=	510,061	
LAT.	32.399375	
LONG.	103.485771	
ELEVATION	+3548' NAVD 88	

NW PAD CORNER		NE PAD CORNER	
X=	761,536 NAD 27	X=	761,986 NAD 27
Y=	510,198	Y=	510,202
ELEVATION	+3547' NAVD 88	ELEVATION	+3549' NAVD 88
SW PAD CORNER		SE PAD CORNER	
X=	761,539 NAD 27	X=	761,989 NAD 27
Y=	509,848	Y=	509,852
ELEVATION	+3546' NAVD 88	ELEVATION	+3541' NAVD 88

Page 1 of 2

SURFACE USE PLAT

Scale: 1" = 200'

200' 0 100' 200'

BLACK MOUNTAIN OPERATING, LLC

PROPOSED PAD & ACCESS ROAD  
GRAMA RIDGE STATE 8 NO. 3H WELL  
SECTION 8, T22S-R34E  
LEA COUNTY, NEW MEXICO



C. H. Fenstermaker & Associates, L.L.C.  
135 Regency Sq. Lafayette, LA 70508  
Ph. 337-237-2200 Fax. 337-232-3299  
www.fenstermaker.com

DRAWN BY: BOR		REVISIONS	
PROJ. MGR.: VHV	No. 1	DATE: 02/07/2017	REVISED BY: BOR
DATE: 11/15/2016	No.	DATE:	REVISED BY:
FILENAME: T:\2016\2164917\DWG\Grama Ridge State 8 3H_SUP_020617.dwg			

**NOTE:**

Please be advised, that while reasonable efforts are made to locate and verify pipelines and anomalies using our standard pipeline locating equipment, it is impossible to be 100 % effective. As such, we advise using caution when performing work as there is a possibility that pipelines and other hazards, such as fiber optic cables, PVC pipelines, etc. may exist undetected on site.

**NOTE:**

Many states maintain information centers that establish links between those who dig (excavators) and those who own and operate underground facilities (operators). It is advisable and in most states, law, for the contractor to contact the center for assistance in locating and marking underground utilities. For guidance: New Mexico One Call - [www.nmonccall.org](http://www.nmonccall.org)

**DISCLAIMER:** At this time, C. H. Fenstermaker & Associates, L.L.C. has not performed nor was asked to perform any type of engineering, hydrological modeling, flood plain, or "No Rise" certification analyses, including but not limited to determining whether the project will impact flood hazards in connection with federal/FEMA, state, and/or local laws, ordinances and regulations. Accordingly, Fenstermaker makes no warranty or representation of any kind as to the foregoing issues, and persons or entities using this information shall do so at their own risk.

CENTERLINE PROPOSED ACCESS ROAD		
COURSE	BEARING	DISTANCE
1	S 19° 47' 18" E	142.25'
2	S 00° 23' 24" E	416.02'

PROPOSED PAD		
COURSE	BEARING	DISTANCE
3	N 89° 36' 36" E	44.47'
4	S 00° 23' 24" E	350.00'
5	S 89° 36' 36" W	450.00'
6	N 00° 23' 24" W	350.00'
7	N 89° 36' 36" E	405.53'

FOR THE EXCLUSIVE USE OF  
BLACK MOUNTAIN OPERATING, LLC  
I, Robert L. Lastrapes, Professional  
Surveyor, do hereby state this plat is true  
and correct to the best of my knowledge.



## SURFACE USE PLAT

**BLACK MOUNTAIN OPERATING, LLC**  
PROPOSED PAD & ACCESS ROAD  
GRAMA RIDGE STATE 8 NO. 3H WELL  
SECTION 8, T22S-R34E  
LEA COUNTY, NEW MEXICO



C. H. Fenstermaker & Associates, L.L.C.  
135 Regency Sq. Lafayette, LA 70508  
Ph. 337-237-2200 Fax. 337-232-3299  
[www.fenstermaker.com](http://www.fenstermaker.com)

DRAWN BY: BOR		REVISIONS	
PROJ. MGR.: VHV	No. 1	DATE: 02/07/2017	REVISED BY: BOR
DATE: 11/15/2016	No.	DATE:	REVISED BY:
FILENAME: T:\2016\2164917\DWG\Grama Ridge State 8 3H_SUP_020617.dwg			