

DISTRICT I
1625 N. French Dr., Hobbs, NM 88240
Phone: (575) 393-6161 Fax: (575) 393-0720

DISTRICT II
811 S. First St., Artesia, NM 88210
Phone: (575) 748-1283 Fax: (575) 748-9720

DISTRICT III
1000 Rio Brazos Road, Aztec, NM 87410
Phone: (505) 334-6178 Fax: (505) 334-6170

DISTRICT IV
1220 S. St. Francis Dr., Santa Fe, NM 87505
Phone: (505) 476-3460 Fax: (505) 476-3462

State of New Mexico
Energy, Minerals & Natural Resources Department
OIL CONSERVATION DIVISION
1220 South St. Francis Dr.
Santa Fe, New Mexico 87505

Form C-102
Revised August 1, 2011
Submit one copy to appropriate
District Office

☒ AMENDED REPORT

WELL LOCATION AND ACREAGE DEDICATION PLAT

API Number 30-015-44063	Pool Code 76790 98220	Pool Name Forehand Ranch - Wolfcamp	Purple SAGE 98220
Property Code 314249	Property Name FOREHAND RANCH 22 STATE		Well Number 9H
OGRID No. 249099	Operator Name CAZA OPERATING, LLC		Elevation 3149'

Surface Location

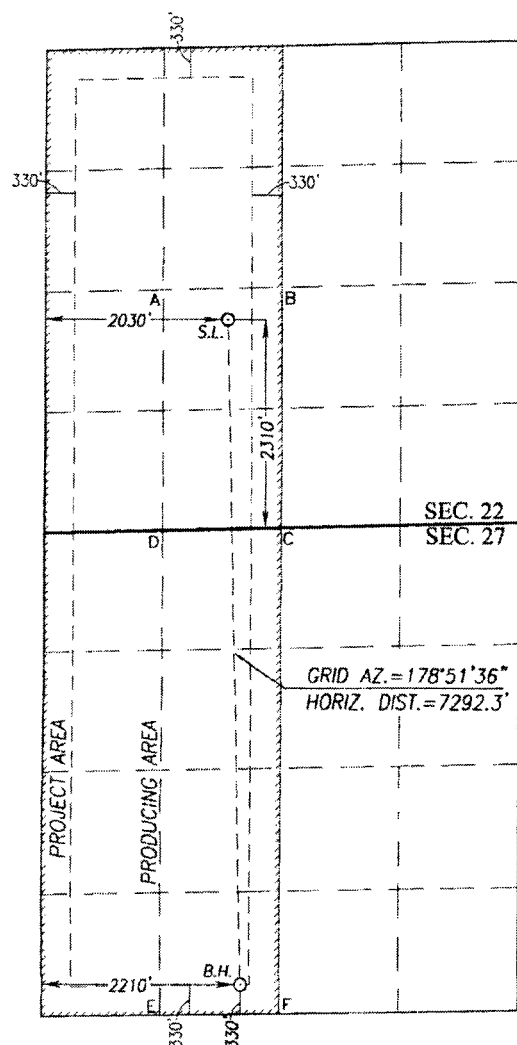
UL or lot No.	Section	Township	Range	Lot Idn	Feet from the	North/South line	Feet from the	East/West line	County
K	22	23-S	27-E		2310	SOUTH	2030	WEST	EDDY

Bottom Hole Location If Different From Surface

UL or lot No.	Section	Township	Range	Lot Idn	Feet from the	North/South line	Feet from the	East/West line	County
N	27	23-S	27-E		330	SOUTH	2210	WEST	EDDY

Dedicated Acres	Joint or Infill	Consolidation Code	Order No.
640			

NO ALLOWABLE WILL BE ASSIGNED TO THIS COMPLETION UNTIL ALL INTERESTS HAVE BEEN CONSOLIDATED OR A NON-STANDARD UNIT HAS BEEN APPROVED BY THE DIVISION



SCALE: 1"=2000'

GEODETIC COORDINATES
NAD 83 NME
SURFACE LOCATION
Y = 469112.5 N
X = 588742.9 E
LAT. = 32.289571° N
LONG. = 104.179923° W

GEODETIC COORDINATES
NAD 27 NME
SURFACE LOCATION
Y = 469053.7 N
X = 547560.6 E
LAT. = 32.289451° N
LONG. = 104.179424° W

CORNER COORDINATES TABLE

NAD 27 NME
A - Y = 469380.0 N, X = 546844.7 E
B - Y = 469410.0 N, X = 548157.6 E
C - Y = 466756.6 N, X = 548153.0 E
D - Y = 466728.0 N, X = 546839.5 E
E - Y = 461421.5 N, X = 546813.5 E
F - Y = 461441.1 N, X = 548133.3 E

CORNER COORDINATES TABLE

NAD 83 NME
A - Y = 469438.7 N, X = 588027.0 E
B - Y = 469468.8 N, X = 589339.9 E
C - Y = 466815.4 N, X = 589335.4 E
D - Y = 466786.7 N, X = 588021.9 E
E - Y = 461480.0 N, X = 587996.0 E
F - Y = 461499.7 N, X = 589315.8 E

BOTTOM HOLE LOCATION

NAD 83 NME
Y = 461823.3 N
X = 588888.0 E
LAT. = 32.269533° N
LONG. = 104.179487° W

BOTTOM HOLE LOCATION

NAD 27 NME
Y = 461764.7 N
X = 547705.5 E
LAT. = 32.269414° N
LONG. = 104.178989° W

OPERATOR CERTIFICATION

I hereby certify that the information herein is true and complete to the best of my knowledge and belief, and that this organization either owns a working interest or unleased mineral interest in the land including the proposed bottom hole location or has a right to drill this well at this location pursuant to a contract with an owner of such mineral or working interest, or to a voluntary pooling agreement or a compulsory pooling order heretofore entered by the division.

Signature **Steve Morris** **02/21/2017**
Date

Steve Morris
Printed Name

steve.morris@mojoenergy.com
E-mail Address

SURVEYOR CERTIFICATION

I hereby certify that the well location shown on this plat was plotted from field notes of actual surveys made by me or under my supervision, and that the same is true and correct to the best of my belief.

FEBRUARY 6, 2017

Date of Survey
Signature and Seal of Professional Surveyor:

Ronald J. Eidson **2/21/2017**
Certificate Number **12641**
Ronald J. Eidson **3239**

ACK REV. 2/21/17 REL. W.O.: 15111055 JWSC W.O.: 17.11.0071

Accepted for record - NMOCD

RJP