



SECTION 21  
SECTION 22

3572.4'

75' 30' 30' 155'

3570.2'

50'

90'

150'

170'

320'

320'

260'

3578.9'

3576.1'

OVERHEAD ELECTRIC

LEASE ROAD

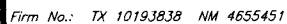
CFM STATE B  
TR-4 #23

EXISTING PAD

PROPOSED PAD

COLLIER 22 STATE COM #43H  
ELEV.: 3574'  
LAT: 32.82247234° N (NAD27)  
LONG: 104.17122794° W (NAD27)

From the intersection of US HWY. 82 and CR-208 (Red Lake Rd.);  
Go North on CR-208 approx. 1.8 miles to a lease road on the left;  
Turn left and go West approx. 0.6 miles to the Southeast corner of  
existing CFM-State B TR-4 #23 well location;  
Turn left and go West across existing CFM-State B TR-4 #23 well  
location approx. 219 feet, location is on the right.



Copyright 2016 – All Rights Reserved

NO.	REVISION	DATE
JOB NO.: LS1609296		
DWG. NO.: 1609296PAD		

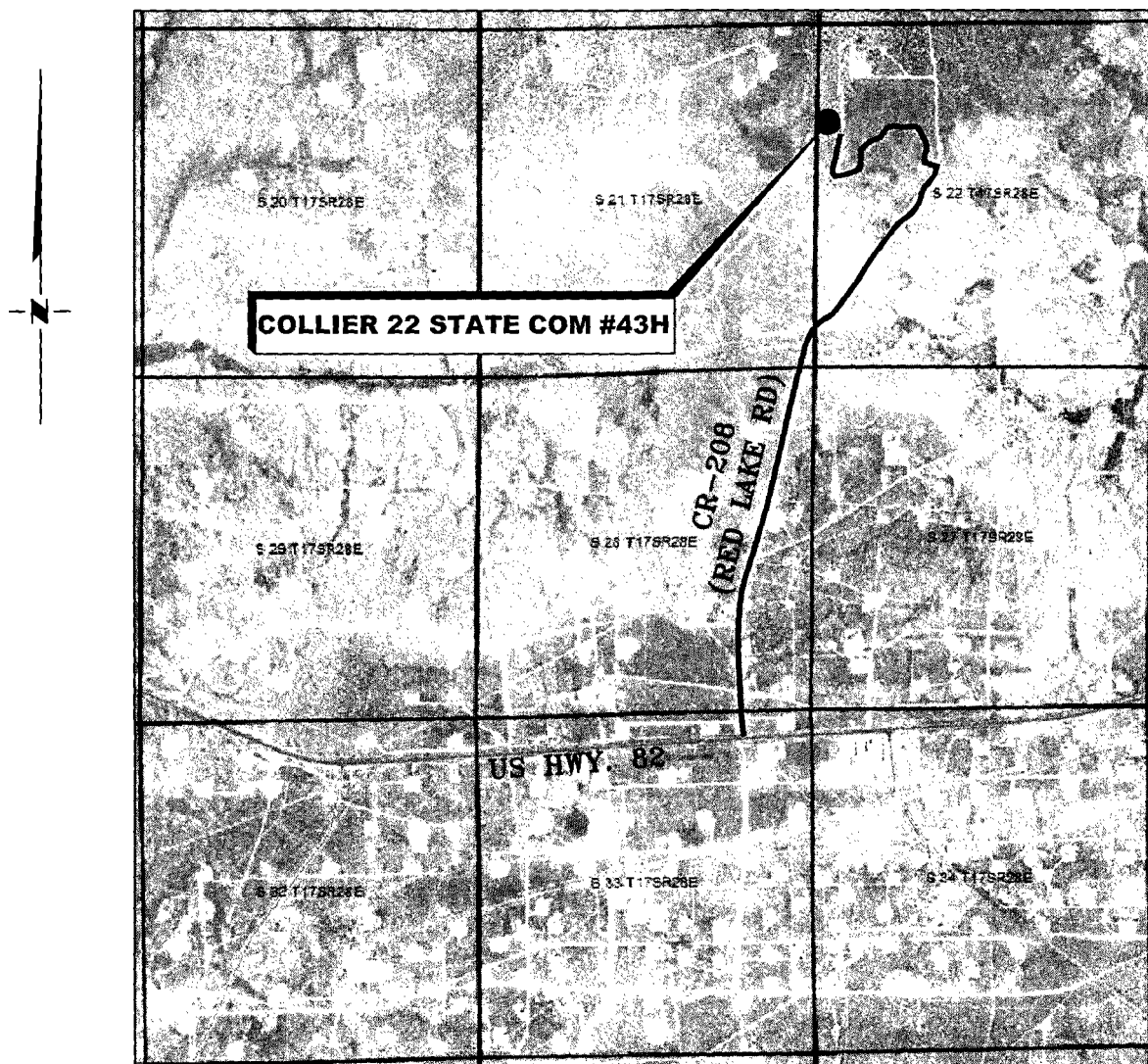
# RRC

308 W. BROADWAY ST., HOBBS, NM 88240 (575) 964-8200

SCALE: 1" = 100'  
DATE: 10-5-2016  
SURVEYED BY: BK  
DRAWN BY: CMJ  
APPROVED BY: RMH  
SHEET: 1 OF 1

# VICINITY MAP

NOT TO SCALE



*SECTION 22, TWP. 17 SOUTH, RGE. 28 EAST,  
N. M. P. M., EDDY COUNTY, NEW MEXICO*

OPERATOR: COG Operating, LLC  
LEASE: Collier 22 State Com  
WELL NO.: 43H

LOCATION: 1650' FNL & 140' FWL  
ELEVATION: 3574'

Firm No.: TX 10193838 NM 4655451

Copyright 2016 - All Rights Reserved

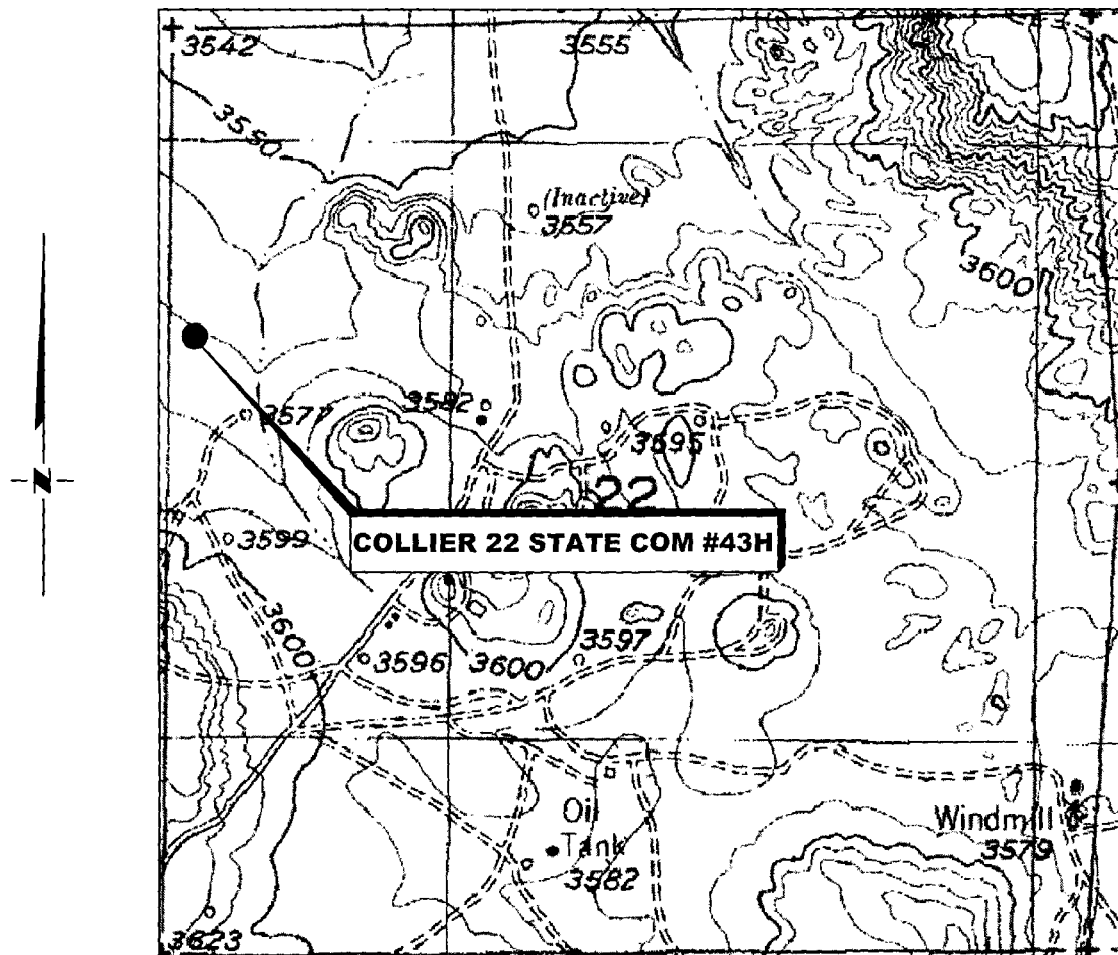
NO.	REVISION	DATE
JOB NO.: LS1609296		
DWG. NO.: 1609296VM		

# RRC

308 W. BROADWAY ST., HOBBS, NM 88240 (575) 964-8200

SCALE: N. T. S.  
DATE: 10-5-2016  
SURVEYED BY: BK  
DRAWN BY: CMJ  
APPROVED BY: RMH  
SHEET: 1 OF 1

# LOCATION VERIFICATION MAP



*SECTION 22, TWP. 17 SOUTH, RGE. 28 EAST,  
N. M. P. M., EDDY COUNTY, NEW MEXICO*

OPERATOR: COG Operating, LLC  
LEASE: Collier 22 State Com  
WELL NO.: 43H  
ELEVATION: 3574'

LOCATION: 1650' FNL & 140' FWL  
CONTOUR INTERVAL: 10'  
USGS TOPO. SOURCE MAP:  
Red Lake, NM (1955)

Firm No.: TX 10193838 NM 4655451

Copyright 2016 - All Rights Reserved

NO.	REVISION	DATE
JOB NO.:	LS1609296	
DWG. NO.:	1609296LVM	

# RRC

308 W. BROADWAY ST., HOBBS, NM 88240 (575) 964-8200

SCALE: 1" = 1000'  
DATE: 10-5-2016  
SURVEYED BY: BK  
DRAWN BY: CMJ  
APPROVED BY: RMH  
SHEET: 1 OF 1