

District I
1625 N. French Dr., Hobbs, NM 88240
Phone: (575) 393-6161 Fax: (575) 393-0720
District II
811 S. First St., Artesia, NM 88210
Phone: (575) 748-1283 Fax: (575) 748-9720
District III
1000 Rio Brazos Road, Aztec, NM 87410
Phone: (505) 334-6178 Fax: (505) 334-6170
District IV
1220 S. St. Francis Dr., Santa Fe, NM 87505
Phone: (505) 476-3460 Fax: (505) 476-3462

State of New Mexico
Energy, Minerals & Natural Resources Department
OIL CONSERVATION DIVISION
ARTESIA DISTRICT
1220 South St. Francis Dr.
Santa Fe, NM 87505

Form C-102
Revised August 1, 2011
Please send this copy to appropriate
District Office

FEB 17 2017 AMENDED REPORT

RECEIVED

As Deld

WELL LOCATION AND ACREAGE DEDICATION PLAT

¹ API Number 30-015-43715	² Pool Code 97494	³ Pool Name Cottonwood Draw Bone Spring
⁴ Property Code 316109	⁵ Property Name GRYNBERG 11 FEDERAL COM	⁶ Well Number 5H
⁷ OGRID No. 215099	⁸ Operator Name CIMAREX ENERGY CO.	⁹ Elevation 3286.7'

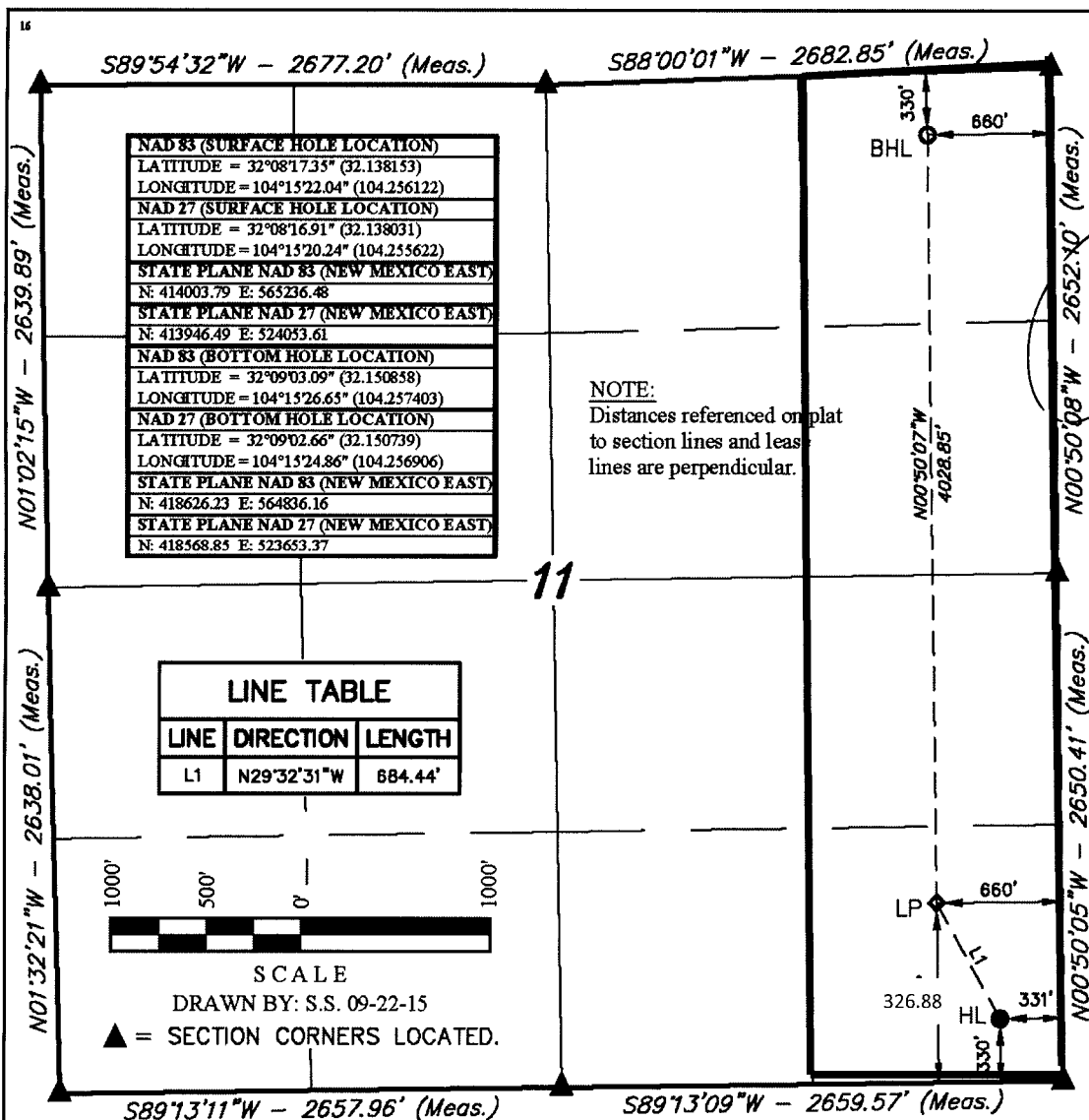
¹⁰ Surface Location

UL or lot no.	Section	Township	Range	Lot Idn	Feet from the	North/South line	Feet from the	East/West line	County
P	11	25S	26E		330'	SOUTH	331'	EAST	EDDY

¹¹ Bottom Hole Location If Different From Surface

UL or lot no.	Section	Township	Range	Lot Idn	Feet from the	North/South line	Feet from the	East/West line	County
A	11	25S	26E		342'	NORTH	667'	EAST	EDDY
¹² Dedicated Acres 160		¹³ Joint or Infill		¹⁴ Consolidation Code		Cruce No.			

No allowable will be assigned to this completion until all interests have been consolidated or a non-standard unit has been approved by the division.



¹⁷ OPERATOR CERTIFICATION
I hereby certify that the information contained herein is true and complete to the best of my knowledge and belief, and that this organization either owns a working interest or leased mineral interest in the land including the proposed bottom hole location or has a right to drill this well at this location pursuant to a contract with an owner of such a mineral or working interest, or to a voluntary pooling agreement or a compulsory pooling order heretofore entered by the division.

Terri Stathem
Signature
Date: 2-14-17

Terri Stathem
Printed Name
tstathem@cimarex.com
E-mail Address

¹⁸ SURVEYOR CERTIFICATION
I hereby certify that the well location shown on this plat was plotted from field notes of actual surveys made by me or under my supervision, and that the same is true and correct to the best of my belief.

SEPTEMBER 21, 2015
Date of Survey
Signature and Seal of Professional Surveyor:

Nelson J. Marshall
PROFESSIONAL SURVEYOR
NEW MEXICO
12446
MARCH 15, 2015

Certificate Number: