

District I
1625 N. French Dr., Hobbs, NM 88240
Phone: (575) 393-6161 Fax: (575) 393-0720
District II
811 S. First St., Artesia, NM 88210
Phone: (575) 748-1283 Fax: (575) 748-9720
District III
1000 Rio Brazos Road, Aztec, NM 87410
Phone: (505) 334-6178 Fax: (505) 334-6170
District IV
1220 S. St. Francis Dr., Santa Fe, NM 87505
Phone: (505) 476-3460 Fax: (505) 476-3462

State of New Mexico
Energy, Minerals & Natural Resources Department
OIL CONSERVATION DIVISION
1220 South St. Francis Dr.
Santa Fe, NM 87505

Form C-102
Revised August 1, 2011
Submit one copy to appropriate
District Office

☒ AMENDED REPORT

WELL LOCATION AND ACREAGE DEDICATION PLAT

¹ APT Number 30-015-42150	² Pool Code 98220	³ Pool Name Purple Sage-Wolfcamp Gas
⁴ Property Code 40451	⁵ Property Name MEDWICK 32 FEDERAL COM	⁶ Well Number 12H
⁷ OGRID No. 215099	⁸ Operator Name CIMAREX ENERGY CO.	⁹ Elevation 3183'

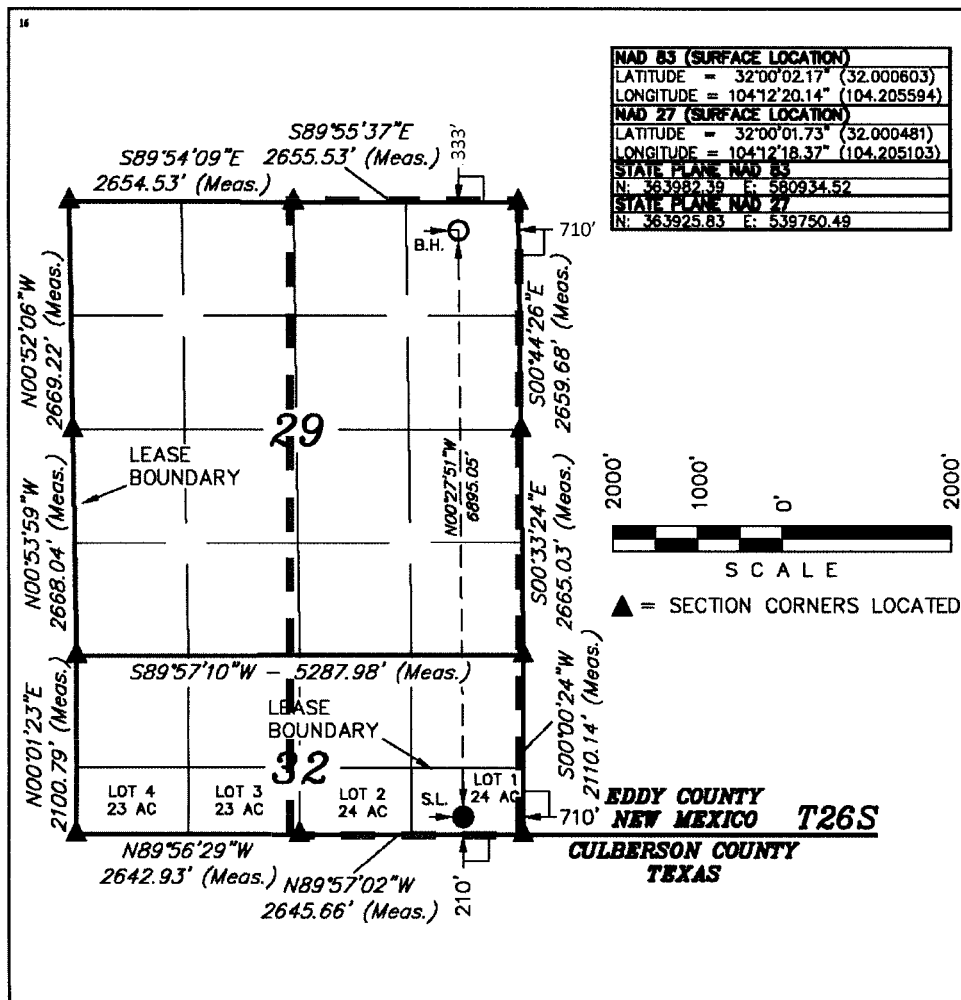
¹⁰ Surface Location

UL or lot no.	Section	Township	Range	Lot Idn	Feet from the	North/South line	Feet from the	East/West line	County
1	32	26S	27E		210	SOUTH	710	EAST	EDDY

¹¹ Bottom Hole Location If Different From Surface

UL or lot no.	Section	Township	Range	Lot Idn	Feet from the	North/South line	Feet from the	East/West line	County
A	29	26S	27E		333	NORTH	710	EAST	EDDY
¹² Dedicated Acres 446.55	¹³ Joint or Infill	¹⁴ Consolidation Code	¹⁵ Order No. R-14262						

No allowable will be assigned to this completion until all interests have been consolidated or a non-standard unit has been approved by the division.



¹⁷ OPERATOR
CERTIFICATION

I hereby certify that the information contained herein is true and complete to the best of my knowledge and belief, and that this organization either owns a working interest or unleased mineral interest in the land including the proposed bottom hole location or has a right to drill this well at this location pursuant to a contract with an owner of such a mineral or working interest, or to a voluntary pooling agreement or a compulsory pooling order heretofore entered by the division.

Hope Knauls 2-28-17
Signature Date

Hope Knauls
Printed Name
Hknauls@cimarex.com
E-mail Address

¹⁸ SURVEYOR
CERTIFICATION

I hereby certify that the well location shown on this plat was plotted from field notes of actual surveys made by me or under my supervision, and that the same is true and correct to the best of my belief.

August 26, 2013

Date of Survey
Signature and Seal of Professional Surveyor:



Certificate Number: