

MAR 01 2017

Form C-102

Revised August 1, 2011

Submit one copy to appropriate
District Office

DISTRICT I
1625 N. French Dr., Hobbs, NM 88240
Phone (575) 393-6161 Fax (575) 393-0720
DISTRICT II
811 S. First St., Artesia, NM 88210
Phone (575) 748-1283 Fax (575) 748-9720
DISTRICT III
1000 Rio Brazos Road, Aztec, NM 87410
Phone (505) 334-6178 Fax (505) 334-6170
DISTRICT IV
1220 S. St. Francis Dr., Santa Fe, NM 87505
Phone (505) 476-3460 Fax (505) 476-3462

State of New Mexico
Energy, Minerals & Natural Resources Department
OIL CONSERVATION DIVISION
1220 South St. Francis Dr.
Santa Fe, New Mexico 87505

RECEIVED

AMENDED REPORT

WELL LOCATION AND ACREAGE DEDICATION PLAT

API Number 30-015-43003	Pool Code 98220	Pool Name Purple Sage, Wolfcamp
Property Code	Property Name GOLDENCHILD STATE	Well Number 1H
OGRID No. 006380	Operator Name XTO ENERGY	Elevation 2912'

Surface Location

UL or lot No.	Section	Township	Range	Lot Idn	Feet from the	North/South line	Feet from the	East/West line	County
P	6	25-S	29-E		200	SOUTH	750	EAST	EDDY

AS-Drilling Bottom Hole Location If Different From Surface

UL or lot No.	Section	Township	Range	Lot Idn	Feet from the	North/South line	Feet from the	East/West line	County
I	31	24-S	29-E		2474.4	SOUTH	680.4	EAST	EDDY

Dedicated Acres	Joint or Infill	Consolidation Code	Order No.
240			

NO ALLOWABLE WILL

PLETION UNTIL ALL INTERESTS HAVE BEEN CONSOLIDATED OR A NON-STANDARD UNIT HAS BEEN APPROVED BY THE DIVISION

...wells having less than 320 dedicated
acres may increase spacing to the standard
320-acre gas spacing by filing application to
increase spacing as provided by Division
rules...

SCALE: 1"=2000'

AS-DRILLED
BOTTOM HOLE LOCATION
NAD 83 NME
Y= 426925.1 N
X= 639116.6 E
LAT.=32.173300° N
LONG.=104.017310° W
LAST TAKE POINT
NAD 83 NME
Y= 426695.4 N
X= 639107.2 E
LAT.=32.172669° N
LONG.=104.017342° W

AS-DRILLED
BOTTOM HOLE LOCATION
NAD 27 NME
Y= 426866.6 N
X= 597932.4 E
LAT.=32.173177° N
LONG.=104.016821° W
LAST TAKE POINT
NAD 27 NME
Y= 426636.9 N
X= 597923.0 E
LAT.=32.172546° N
LONG.=104.016854° W

CORNER COORDINATES TABLE

NAD 27 NME
A - Y= 427057.5 N, X= 597288.3 E
B - Y= 427063.5 N, X= 598610.7 E
C - Y= 424397.5 N, X= 598636.7 E
D - Y= 419138.4 N, X= 598604.7 E
E - Y= 419114.6 N, X= 597277.1 E
F - Y= 424388.4 N, X= 597307.8 E

CORNER COORDINATES TABLE

NAD 83 NME
A - Y= 427116.0 N, X= 638472.5 E
B - Y= 427122.1 N, X= 639794.9 E
C - Y= 424456.0 N, X= 639821.0 E
D - Y= 419196.7 N, X= 639789.1 E
E - Y= 419172.9 N, X= 638461.4 E
F - Y= 424446.9 N, X= 638492.0 E

FIRST TAKE POINT

NAD 83 NME
Y= 420086.6 N
X= 639023.7 E
LAT.=32.154503° N
LONG.=104.017675° W

FIRST TAKE POINT

NAD 27 NME
Y= 420028.3 N
X= 597839.4 E
LAT.=32.154380° N
LONG.=104.017187° W

GEODETIC COORDINATES

NAD 83 NME
SURFACE LOCATION
Y= 419383.4 N
X= 639040.4 E
LAT.=32.152570° N
LONG.=104.017627° W

GEODETIC COORDINATES

NAD 27 NME
SURFACE LOCATION
Y= 419325.0 N
X= 597856.0 E
LAT.=32.152446° N
LONG.=104.017140° W

OPERATOR CERTIFICATION

I hereby certify that the information herein is true and complete to the best of my knowledge and belief, and that this organization either owns a working interest or unEDDYsed mineral interest in the land including the proposed bottom hole location or has a right to drill this well at this location pursuant to a contract with an owner of such mineral or working interest, or to a voluntary pooling agreement or a compulsory pooling order heretofore entered by the division.

Stephanie Rabinow 2/26/17
Signature Date

Stephanie Rabinow
Printed Name

Stephanie.Rabinow@xtoenergy.com
E-mail Address

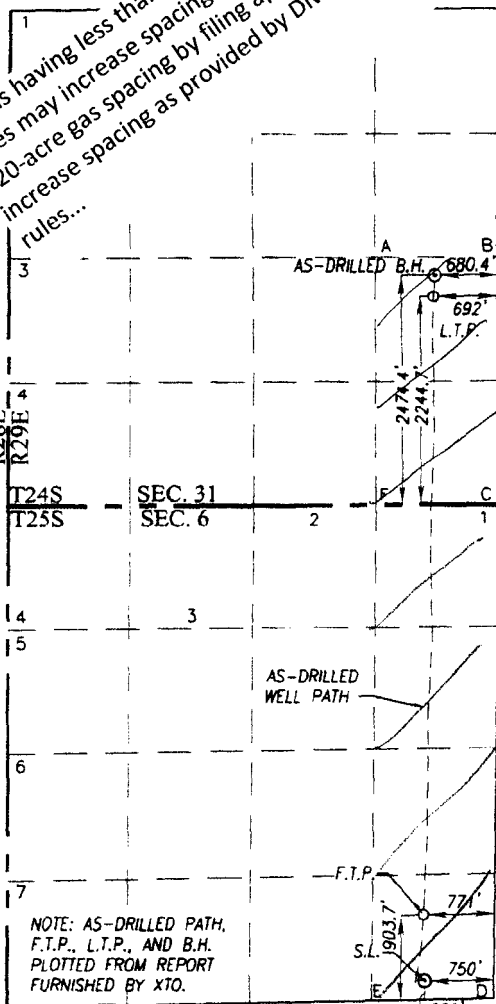
SURVEYOR CERTIFICATION

I hereby certify that the well location shown on this plat was plotted from field notes of actual surveys made by me or under my supervision, and that the same is true and correct to the best of my belief.

JANUARY 30, 2015

Date of Survey
Signature & Seal of Professional Surveyor

Ronald J. Eidson 12/09/2015
Certificate Number Gary G. Eidson 12641
Ronald J. Eidson 3239
LSL REL W.O. 15.11.0101 JWSC W.O. 15.13.1094



Submit 3 Copies To Appropriate District
Office
District I
1625 N. French Dr., Hobbs, NM 87240
District II
1301 W. Grand Ave., Artesia, NM 88210
District III
1000 Rio Brazos Rd., Aztec, NM 87410
District IV
1220 S. St. Francis Dr., Santa Fe, NM
87505

State of New Mexico
Energy, Minerals and Natural Resources

Form C-103
June 19, 2008

OIL CONSERVATION DIVISION
1220 South St. Francis Dr.
Santa Fe, NM 87505

WELL API NO. 30-015-43003
5. Indicate Type of Lease STATE <input checked="" type="checkbox"/> FEE <input type="checkbox"/>
6. State Oil & Gas Lease No.
7. Lease Name or Unit Agreement Name: Goldenchild State
8. Well Number 1H
9. OGRID Number 005380
10. Pool name or Wildcat Purple Sage; Wolfcamp

SUNDRY NOTICES AND REPORTS ON WELLS
(DO NOT USE THIS FORM FOR PROPOSALS TO DRILL OR TO DEEPEN OR PLUG BACK TO A DIFFERENT RESERVOIR. USE "APPLICATION FOR PERMIT" (FORM C-101) FOR SUCH PROPOSALS.)

1. Type of Well: Oil Well <input type="checkbox"/> Gas Well <input checked="" type="checkbox"/> Other	7. Lease Name or Unit Agreement Name: Goldenchild State
2. Name of Operator XTO Energy, Inc.	8. Well Number 1H
3. Address of Operator 500 W. Illinois St Ste 100 Midland, TX 79701	9. OGRID Number 005380
4. Well Location Unit Letter P : 200 feet from the South line and 750 feet from the East line Section 6 Township 25S Range 29E NMPM County Eddy	10. Pool name or Wildcat Purple Sage; Wolfcamp
11. Elevation (Show whether DR, RKB, RT, GR, etc.) 2912'	

12. Check Appropriate Box to Indicate Nature of Notice, Report, or Other Data

NOTICE OF INTENTION TO:

PERFORM REMEDIAL WORK ☐ PLUG AND ABANDON ☐
TEMPORARILY ABANDON ☐ CHANGE PLANS ☐
PULL OR ALTER CASING ☐ MULTIPLE COMPL ☐
DOWNHOLE COMMINGLE ☐

OTHER: ☐

SUBSEQUENT REPORT OF:

REMEDIAL WORK ☐ ALTERING CASING ☐
COMMENCE DRILLING OPNS. ☐ P AND A ☐
CASING/CEMENT JOB ☐

OTHER: **Pool Change** ☒

13. Describe proposed or completed operations. (Clearly state all pertinent details, and give pertinent dates, including estimated date of starting any proposed work). SEE RULE 1103. For Multiple Completions: Attach wellbore diagram of proposed completion or recompletion.

XTO Energy, Inc respectfully requests to change the referenced well from a wildcat pool to the Purple Sage; Wolfcamp pool pursuant to NMOCD order.

NM OIL CONSERVATION
ARTESIA DISTRICT
MAR 01 2017

RECEIVED

Spud Date:

Rig Release Date:

I hereby certify that the information above is true and complete to the best of my knowledge and belief.

SIGNATURE Stephanie Rabadue TITLE Regulatory Analyst DATE 02/26/2017
Type or print name Stephanie Rabadue E-mail address: stephanie_rabadue@xtoenergy.com PHONE 432-620-6714

For State Use Only

Accepted For Record

Accepted For Record

APPROVED BY _____ TITLE NMOCD DATE _____

Conditions of Approval (if any):