

NM OIL CONSERVATION

ARTESIA DISTRICT

Form C-102

State of New Mexico
Energy, Minerals & Natural Resources Department
OIL CONSERVATION DIVISION
1220 South St. Francis Dr.
Santa Fe, NM 87505

SEP 07 2016

Revised August 1, 2011

Submit one copy to appropriate
District Office

RECEIVED

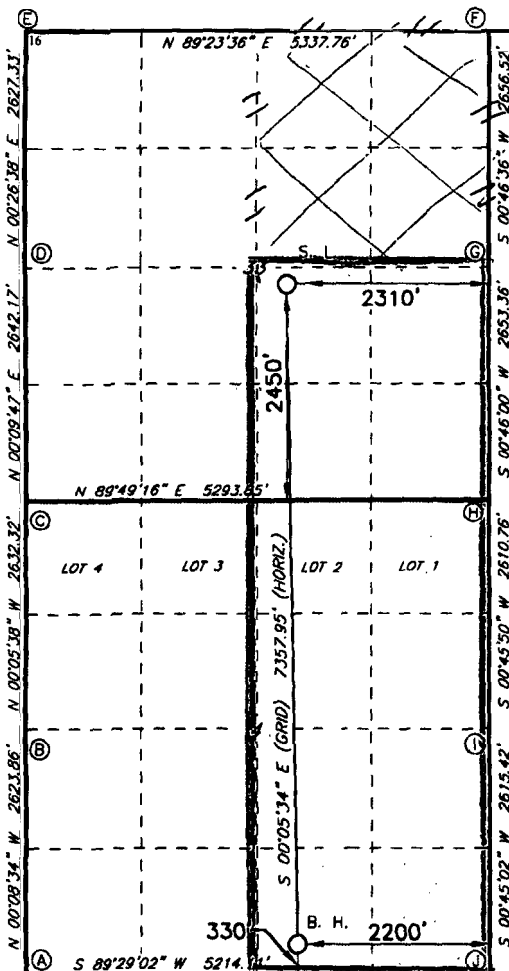
AMENDED REPORT
2/1/17

District I
1625 N. French Dr., Hobbs, NM 88240
Phone: (575) 393-6161 Fax: (575) 393-0720
District II
811 S. First St., Artesia, NM 88210
Phone: (575) 748-1283 Fax: (575) 748-9720
District III
1000 Rio Brazos Road, Aztec, NM 87410
Phone: (505) 334-6178 Fax: (505) 334-6170
District IV
1220 S. St. Francis Dr., Santa Fe, NM 87505
Phone: (505) 476-3460 Fax: (505) 476-3462

WELL LOCATION AND ACREAGE DEDICATION PLAT

1 API Number 30-015-43499		2 Pool Code 98220		3 Pool Name PURPLE SAGE	
4 Property Code 315720		5 Property Name FOREIGNER 33/4 W2JO FEE COM		6 Well Number 1H	
7 GRID NO. 14744		8 Operator Name MEWBOURNE OIL COMPANY		9 Elevation 3081'	
10 Surface Location					
UL or lot no. J	Section 33	Township 23S	Range 28E	Lot Idn 	Feet from the 2450
		North/South line SOUTH		Feet from the 2310	East/West line EAST
				County EDDY	
11 Bottom Hole Location If Different From Surface					
UL or lot no. 0	Section 4	Township 24S	Range 28E	Lot Idn 	Feet from the 330
		North/South line SOUTH		Feet from the 2090	East/West line EAST
				County EDDY	
12 Dedicated Acres 480640		13 Joint or Infill 		14 Consolidation Code 	
				15 Order No. Requires NSP ~ R-14262	

No allowable will be assigned to this completion until all interest have been consolidated or a non-standard unit has been approved by the division.



GEODETIC DATA
NAD 27 GRID - NM EAST
SURFACE LOCATION
N: 458701.1 - E: 574989.1
LAT: 32.26085341° N
LONG: 104.09073973° W
BOTTOM HOLE
N: 451344.9 - E: 575001.1
LAT: 32.24063125° N
LONG: 104.09075494° W
CORNER DATA
NAD 27 GRID - NM EAST
A: FOUND YPC "ILLEGIBLE"
N: 450987.8 - E: 571984.0
B: FOUND YPC "ILLEGIBLE"
N: 453611.0 - E: 571977.4
C: FOUND YPC "ILLEGIBLE"
N: 456242.7 - E: 571973.1
D: FOUND COTTON SPINDLE
N: 458884.3 - E: 571980.6
E: FOUND 100D NAIL
N: 461510.9 - E: 572001.0
F: FOUND 1/2" REBAR
N: 461567.5 - E: 577337.2
G: FOUND 1/2" REBAR
N: 458911.8 - E: 577301.2
H: FOUND BRASS CAP "1942"
N: 456259.3 - E: 577265.7
I: FOUND BRASS CAP "1942"
N: 453649.3 - E: 577230.9
J: FOUND 1/2" REBAR
N: 451034.7 - E: 577196.7

17 OPERATOR CERTIFICATION

I hereby certify that the information contained herein is true and complete to the best of my knowledge and belief, and that this organization either owns a working interest or unleased mineral interest in the land including the proposed bottom hole location or has a right to drill this well at this location pursuant to a contract with an owner of such a mineral or working interest, or to a voluntary pooling agreement or a compulsory pooling order heretofore entered by the division.

Jackie Lathan 8/20/16
Signature Date
Printed Name
E-mail Address

18 SURVEYOR CERTIFICATION

I hereby certify that the well location shown on this plat was plotted from field notes of actual surveys made by me or under my supervision, and that the same is true and correct to the best of my belief.

11-04-2015

Date of Survey

Signature and Seal of Professional Surveyor

19680

Certificate Number

