

DISTRICT I
1625 N. French Dr., Hobbs, NM 88240
Phone: (575) 393-6161 Fax: (575) 393-0720

DISTRICT II
811 S. First St., Artesia, NM 88210
Phone: (575) 748-1283 Fax: (575) 748-9720

DISTRICT III
1000 Rio Brazos Road, Aztec, NM 87410
Phone: (505) 334-6178 Fax: (505) 334-6170

DISTRICT IV
1220 S. St. Francis Dr., Santa Fe, NM 87505
Phone: (505) 476-3460 Fax: (505) 476-3462

State of New Mexico
Energy, Minerals & Natural Resources Department
OIL CONSERVATION DIVISION
1220 South St. Francis Dr.
Santa Fe, New Mexico 87505

Form C-102
Revised August 1, 2011
Submit one copy to appropriate
District Office

□ AMENDED REPORT

WELL LOCATION AND ACREAGE DEDICATION PLAT

API Number 30-015-42921	Pool Code 96217	Pool Name Willow Lake - Bone Spring SE
Property Code 314121	Property Name CORRAL CANYON FEDERAL	
OGRID No. 005380	Operator Name XTO ENERGY	Well Number 2H
		Elevation 2941'

Surface Location

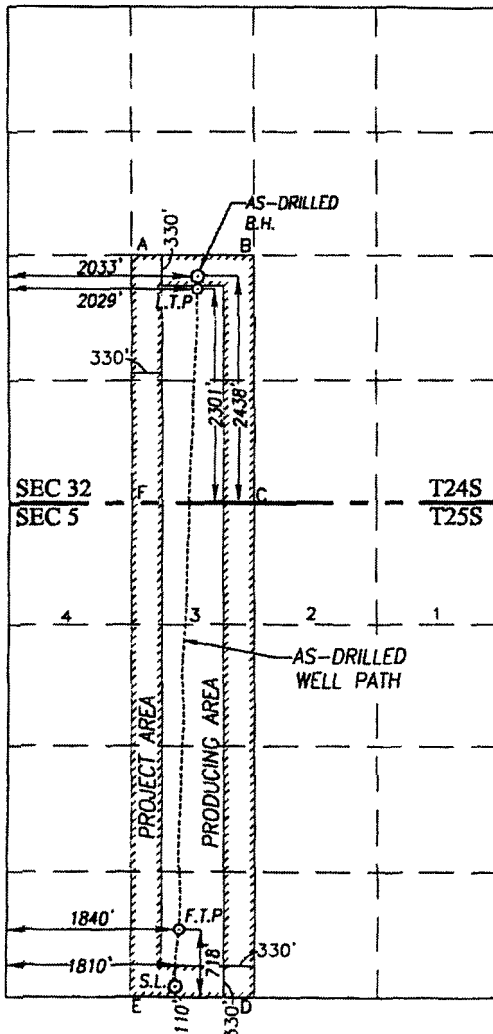
UL or lot No.	Section	Township	Range	Lot Idn	Feet from the	North/South line	Feet from the	East/West line	County
N	5	25-S	29-E		110	SOUTH	1810	WEST	EDDY

As-Drilled Bottom Hole Location If Different From Surface

UL or lot No.	Section	Township	Range	Lot Idn	Feet from the	North/South line	Feet from the	East/West line	County
K	32	24-S	29-E		2438	SOUTH	2033	WEST	EDDY

Dedicated Acres 159.53	Joint or Infill	Consolidation Code	Order No.
---------------------------	-----------------	--------------------	-----------

NO ALLOWABLE WILL BE ASSIGNED TO THIS COMPLETION UNTIL ALL INTERESTS HAVE BEEN CONSOLIDATED OR A NON-STANDARD UNIT HAS BEEN APPROVED BY THE DIVISION



SCALE: 1"=2000'

AS-DRILLED BOTTOM HOLE LOCATION NAD 27 NME Y=426836.0 N X=600645.7 E LAT.=32.173071° N LONG.=104.008053° W	AS-DRILLED BOTTOM HOLE LOCATION NAD 83 NME Y=426894.6 N X=641829.9 E LAT.=32.173194° N LONG.=104.008541° W
LAST TAKE POINT NAD 27 NME Y=426699.2 N X=600642.7 E LAT.=32.172695° N LONG.=104.008064° W	LAST TAKE POINT NAD 83 NME Y=426757.7 N X=641826.9 E LAT.=32.172818° N LONG.=104.008552° W

CORNER COORDINATES TABLE

NAD 27 NME	
A - Y=427061.3 N, X=599932.8 E	B - Y=427059.1 N, X=601249.0 E
C - Y=424399.4 N, X=601264.7 E	D - Y=419118.8 N, X=601262.5 E
E - Y=419128.6 N, X=599933.6 E	F - Y=424398.5 N, X=599950.7 E
NAD 83 NME	
A - Y=427119.9 N, X=641117.0 E	B - Y=427117.7 N, X=642433.3 E
C - Y=424457.9 N, X=642449.0 E	D - Y=419177.2 N, X=642446.9 E
E - Y=419187.0 N, X=641118.0 E	F - Y=424456.9 N, X=641135.0 E

FIRST TAKE POINT NAD 27 NME Y=419843.1 N X=600449.0 E LAT.=32.153849° N LONG.=104.008757° W	FIRST TAKE POINT NAD 83 NME Y=419901.5 N X=641633.4 E LAT.=32.153973° N LONG.=104.009244° W
GEODETIC COORDINATES NAD 27 NME SURFACE LOCATION Y=419235.0 N X=600415.0 E LAT.=32.152178° N LONG.=104.008872° W	GEODETIC COORDINATES NAD 83 NME SURFACE LOCATION Y=419293.4 N X=641599.5 E LAT.=32.152301° N LONG.=104.009359° W

OPERATOR CERTIFICATION

I hereby certify that the information herein is true and complete to the best of my knowledge and belief, and that this organization either owns a working interest or unleased mineral interest in the land including the proposed bottom hole location or has a right to drill this well at this location pursuant to a contract with an owner of such mineral or working interest, or to a voluntary pooling agreement or a compulsory pooling order heretofore entered by the division.

Patricia Donald 3/29/11
Signature Date

Patricia Donald
Printed Name

Patricia.Donald@xtoenergy.com
E-mail Address

SURVEYOR CERTIFICATION

I hereby certify that the well location shown on this plat was plotted from field notes of actual surveys made by me or under my supervision, and that the same is true and correct to the best of my belief.

MARCH 6, 2014

Date of Survey
Signature & Seal of Professional Surveyor:

Ronald J. Eidson
Certificate Number Gary G. Eidson 12641
Ronald J. Eidson 3239

ACK REL W/D: 14131188; W/S/C W.O.: 16.13.0852