

UNITED STATES  
DEPARTMENT OF THE INTERIOR  
BUREAU OF LAND MANAGEMENT

NMOC  
Artesia

FORM APPROVED  
OMB NO. 1004-0137  
Expires: January 31, 2018

**SUNDRY NOTICES AND REPORTS ON WELLS**  
*Do not use this form for proposals to drill or to re-enter an abandoned well. Use form 3160-3 (APD) for such proposals.*

**SUBMIT IN TRIPLICATE - Other instructions on page 2**

5. Lease Serial No.  
NMNM0375257A
6. If Indian, Allottee or Tribe Name
7. If Unit or CA/Agreement, Name and/or No.
8. Well Name and No.  
ROSCOE 6 B3AD FED COM 1H
9. API Well No.  
30-015-43168-00-X1
10. Field and Pool or Exploratory Area  
AVALON-DELAWARE
11. County or Parish, State  
EDDY COUNTY, NM

1. Type of Well  
☒ Oil Well ☐ Gas Well ☐ Other
2. Name of Operator  
MEWBOURNE OIL COMPANY  
Contact: JACKIE LATHAN  
E-Mail: jlathan@mewbourne.com
- 3a. Address  
P O BOX 5270  
HOBBS, NM 88241
- 3b. Phone No. (include area code)  
Ph: 575-393-5905
4. Location of Well (Footage, Sec., T., R., M., or Survey Description)  
Sec 6 T21S R27E Lot 8 1270FNL 265FEL

**12. CHECK THE APPROPRIATE BOX(ES) TO INDICATE NATURE OF NOTICE, REPORT, OR OTHER DATA**

TYPE OF SUBMISSION	TYPE OF ACTION			
<input type="checkbox"/> Notice of Intent	<input type="checkbox"/> Acidize	<input type="checkbox"/> Deepen	<input type="checkbox"/> Production (Start/Resume)	<input type="checkbox"/> Water Shut-Off
<input checked="" type="checkbox"/> Subsequent Report	<input type="checkbox"/> Alter Casing	<input type="checkbox"/> Hydraulic Fracturing	<input type="checkbox"/> Reclamation	<input type="checkbox"/> Well Integrity
<input type="checkbox"/> Final Abandonment Notice	<input type="checkbox"/> Casing Repair	<input type="checkbox"/> New Construction	<input type="checkbox"/> Recomplete	<input checked="" type="checkbox"/> Other Drilling Operations
	<input type="checkbox"/> Change Plans	<input type="checkbox"/> Plug and Abandon	<input type="checkbox"/> Temporarily Abandon	
	<input type="checkbox"/> Convert to Injection	<input type="checkbox"/> Plug Back	<input type="checkbox"/> Water Disposal	

13. Describe Proposed or Completed Operation: Clearly state all pertinent details, including estimated starting date of any proposed work and approximate duration thereof. If the proposal is to deepen directionally or recomplete horizontally, give subsurface locations and measured and true vertical depths of all pertinent markers and zones. Attach the Bond under which the work will be performed or provide the Bond No. on file with BLM/BIA. Required subsequent reports must be filed within 30 days following completion of the involved operations. If the operation results in a multiple completion or recompletion in a new interval, a Form 3160-4 must be filed once testing has been completed. Final Abandonment Notices must be filed only after all requirements, including reclamation, have been completed and the operator has determined that the site is ready for final inspection.

02/25/2017 TD 17 1/2" hole @ 825'. Ran 814' of 13 3/8" 54.5# J55 ST&C csg.  
Cmt w/400 sks Class C w/additives. Mixed @ 13.5#/g w/1.74 yd.  
Tail w/200 sks Class C w/2% CaCl2. Mixed @ 14.8#/g w/1.34 yd.  
Plug down @ 5:30 P.M. 2/25/17.  
Circ 161 sks of cmt to the pit.  
Pumped 20 bbls FW spacer.  
Tested BOPE to 5000# & Annular to 3500#.  
Tested standpipe & mud lines to the pumps to 5000#.  
At 7:30 P.M. 02/26/17, tested csg to 1500# for 30 minutes, held OK.  
Drilled out with 12 1/4" bit.

Charts & Schematic attached.

Accepted for record - NMOC  
BC 4-11-17

APR 10 2017

RECEIVED

14. I hereby certify that the foregoing is true and correct.

Electronic Submission #368841 verified by the BLM Well Information System  
For MEWBOURNE OIL COMPANY, sent to the Carlsbad  
Committed to AFMSS for processing by PRISCILLA PEREZ on 03/07/2017 (17PP0320SE)

Name (Printed/Typed) RUBY CABALLERO

Title CLERK

Signature (Electronic Submission)

Date 03/06/2017

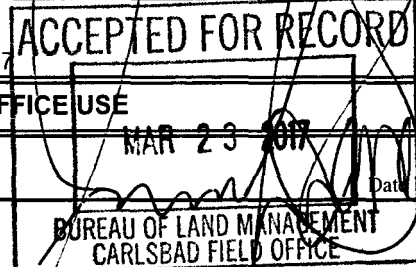
**THIS SPACE FOR FEDERAL OR STATE OFFICE USE**

Approved By

Title

Conditions of approval, if any, are attached. Approval of this notice does not warrant or certify that the applicant holds legal or equitable title to those rights in the subject lease which would entitle the applicant to conduct operations thereon.

Office



Title 18 U.S.C. Section 1001 and Title 43 U.S.C. Section 1212, make it a crime for any person knowingly and willfully to make to any department or agency of the United States any false, fictitious or fraudulent statements or representations as to any matter within its jurisdiction.

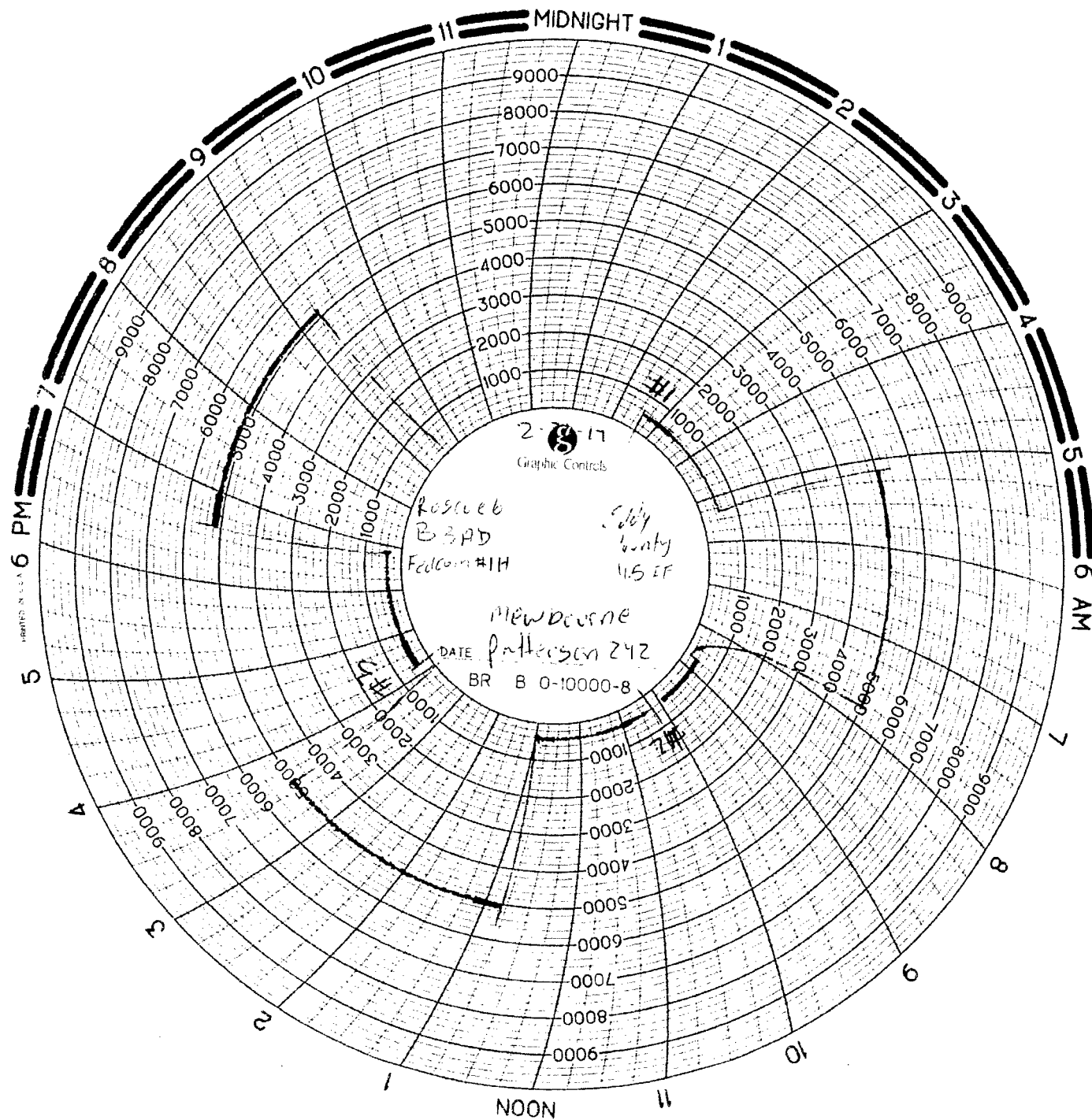
(Instructions on page 2)

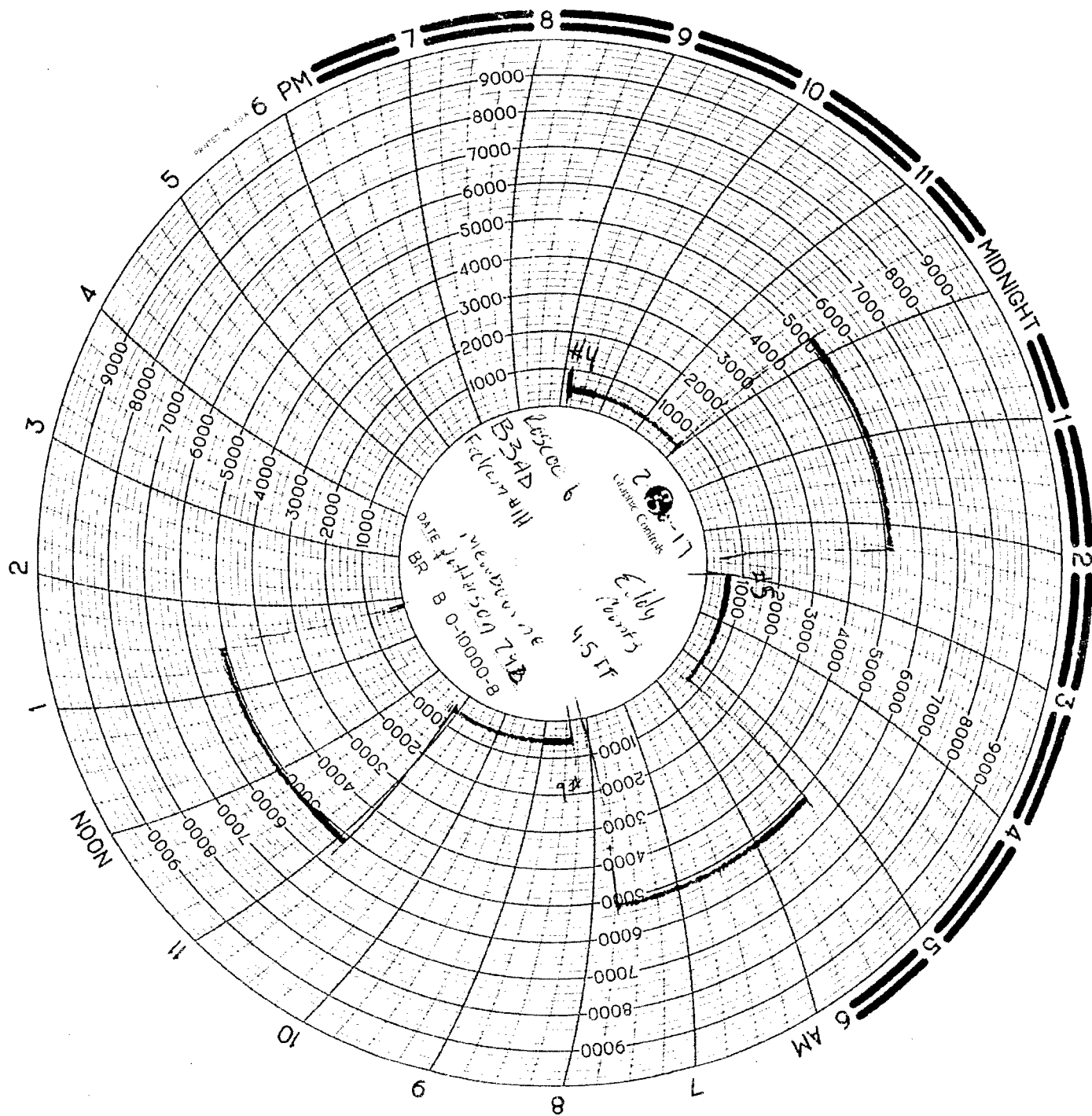
**\*\* BLM REVISED \*\* BLM REVISED \*\* BLM REVISED \*\* BLM REVISED \*\* BLM REVISED \*\***

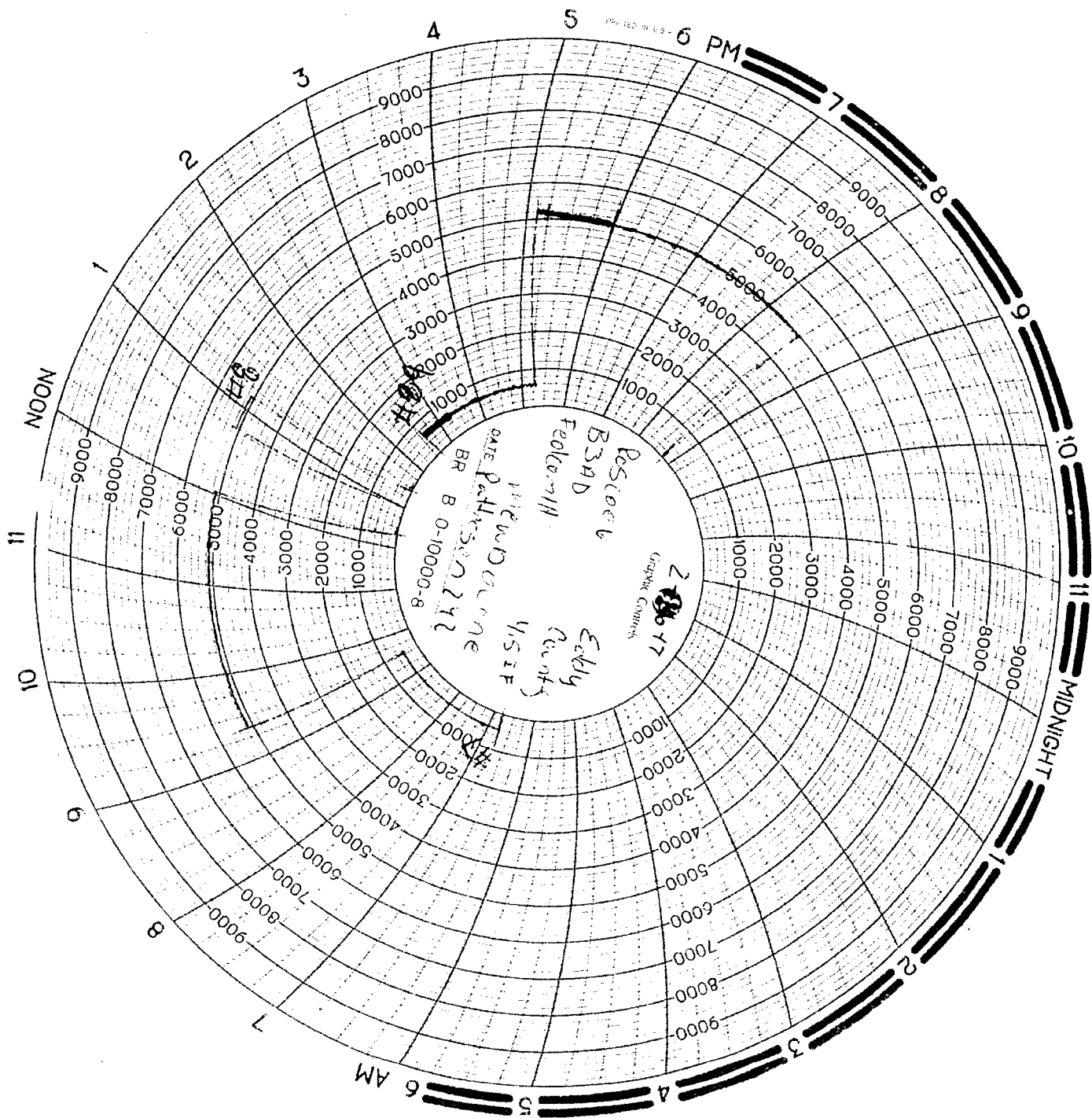
**Additional data for EC transaction #368841 that would not fit on the form**

**32. Additional remarks, continued**

Bond on file: NM1693 nationwide & NMB000919









**MAN**  
WELDING SERVICES

WELDING • BOP TESTING  
NIPPLE UP SERVICE • BOP LIFTS • TANDEM  
MUD AND GAS SEPARATORS  
Lovington, NM • 575-396-4540

Pg. 1 of 1

Company: Mechanics Date: 11/24/17 Invoice # 8844

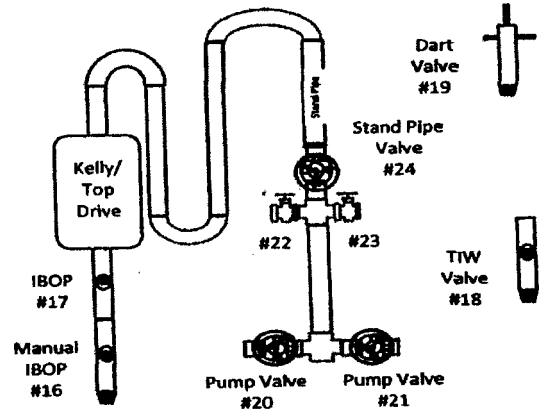
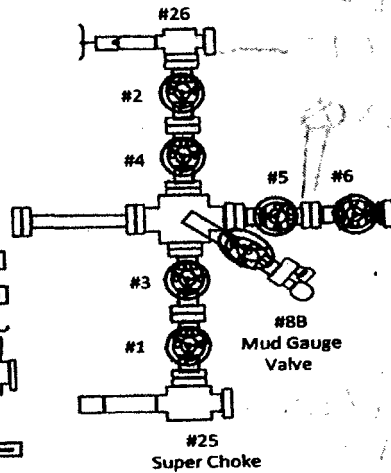
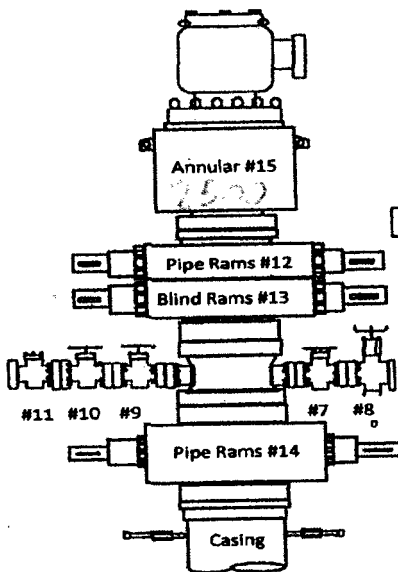
Lease: Sunny 12 well P (2014-2021) Drilling Contractor: Petroleum Rig # 102

Plug Size & Type: Custom Drill Pipe Size: 4 1/2" Tester: Sam (D) Aguiar, Roberto

Required BOP: \_\_\_\_\_ Installed BOP: \_\_\_\_\_

\*Appropriate Casing Valve Must Be Open During BOP Test \*

\* Check Valve Must Be Open/Disabled To Test Kill Line Valves \*



TEST #	ITEMS TESTED	TEST LENGTH	LOW PSI	HIGH PSI	REMARKS
1	12, 10, 13, 14, 15, 16, 17, 18, 19, 20, 21, 22, 23, 24, 25, 26	10/10	500	500	Pass
2	12, 10, 13, 14, 15, 16, 17, 18, 19, 20, 21, 22, 23, 24, 25, 26	10/10	500	500	Pass
3	12, 10, 13, 14, 15, 16, 17, 18, 19, 20, 21, 22, 23, 24, 25, 26	10/10	500	500	Pass
4	12, 10, 13, 14, 15, 16, 17, 18, 19, 20, 21, 22, 23, 24, 25, 26	10/10	500	500	Pass
5	12, 10, 13, 14, 15, 16, 17, 18, 19, 20, 21, 22, 23, 24, 25, 26	10/10	500	500	Pass
6	12, 10, 13, 14, 15, 16, 17, 18, 19, 20, 21, 22, 23, 24, 25, 26	10/10	500	500	Pass
7	12, 10, 13, 14, 15, 16, 17, 18, 19, 20, 21, 22, 23, 24, 25, 26	10/10	500	500	Pass
8	12, 10, 13, 14, 15, 16, 17, 18, 19, 20, 21, 22, 23, 24, 25, 26	10/10	500	500	Pass
9B	12, 10, 13, 14, 15, 16, 17, 18, 19, 20, 21, 22, 23, 24, 25, 26	10/10	500	500	High PSI, 1-2 PSI
9	12, 10, 13, 14, 15, 16, 17, 18, 19, 20, 21, 22, 23, 24, 25, 26	10/10	500	500	Pass
10	12, 10, 13, 14, 15, 16, 17, 18, 19, 20, 21, 22, 23, 24, 25, 26	10/10	500	500	Pass
11	12, 10, 13, 14, 15, 16, 17, 18, 19, 20, 21, 22, 23, 24, 25, 26	10/10	500	500	Pass
12	12, 10, 13, 14, 15, 16, 17, 18, 19, 20, 21, 22, 23, 24, 25, 26	10/10	500	500	Pass
13	12, 10, 13, 14, 15, 16, 17, 18, 19, 20, 21, 22, 23, 24, 25, 26	10/10	500	500	Pass
14	12, 10, 13, 14, 15, 16, 17, 18, 19, 20, 21, 22, 23, 24, 25, 26	10/10	500	500	Pass
15	12, 10, 13, 14, 15, 16, 17, 18, 19, 20, 21, 22, 23, 24, 25, 26	10/10	500	500	Pass
16	12, 10, 13, 14, 15, 16, 17, 18, 19, 20, 21, 22, 23, 24, 25, 26	10/10	500	500	Pass
17	12, 10, 13, 14, 15, 16, 17, 18, 19, 20, 21, 22, 23, 24, 25, 26	10/10	500	500	Pass
18	12, 10, 13, 14, 15, 16, 17, 18, 19, 20, 21, 22, 23, 24, 25, 26	10/10	500	500	Pass
19	12, 10, 13, 14, 15, 16, 17, 18, 19, 20, 21, 22, 23, 24, 25, 26	10/10	500	500	Pass
20	12, 10, 13, 14, 15, 16, 17, 18, 19, 20, 21, 22, 23, 24, 25, 26	10/10	500	500	Pass
21	12, 10, 13, 14, 15, 16, 17, 18, 19, 20, 21, 22, 23, 24, 25, 26	10/10	500	500	Pass
22	12, 10, 13, 14, 15, 16, 17, 18, 19, 20, 21, 22, 23, 24, 25, 26	10/10	500	500	Pass
23	12, 10, 13, 14, 15, 16, 17, 18, 19, 20, 21, 22, 23, 24, 25, 26	10/10	500	500	Pass
24	12, 10, 13, 14, 15, 16, 17, 18, 19, 20, 21, 22, 23, 24, 25, 26	10/10	500	500	Pass
25	12, 10, 13, 14, 15, 16, 17, 18, 19, 20, 21, 22, 23, 24, 25, 26	10/10	500	500	Pass
26	12, 10, 13, 14, 15, 16, 17, 18, 19, 20, 21, 22, 23, 24, 25, 26	10/10	500	500	Pass

# MAN WELDING SERVICES, INC

Company Newline Date 1/24/11

Lease Section 1, 1228, 16 County Wichita, Kansas

Drilling Contractor Newline 2116 Plug & Drill Pipe Size 4 1/2"

Accumulator Pressure: 3000 Manifold Pressure: 1100 Annular Pressure: 1100

## Accumulator Function Test - OO&GO#2

To Check - **USABLE FLUID IN THE NITROGEN BOTTLES** (III.A.2.c.i. or ii or iii)

- Make sure all rams and annular are open and if applicable HCR is closed.
- Ensure accumulator is pumped up to working pressure! **(Shut off all pumps)**
  1. Open HCR Valve. (If applicable)
  2. Close annular.
  3. Close **all** pipe rams.
  4. Open one set of the pipe rams to simulate closing the blind ram.
  5. For 3 ram stacks, open the annular to achieve the 50+ % safety factor. (5M and greater systems).
  6. **Record remaining pressure 1100 psi. Test Fails if pressure is lower than required.**
    - a. {950 psi for a 1500 psi system} b. {1200 psi for a 2000 & 3000 psi system}
  7. If annular is closed, open it at this time and close HCR.

To Check - **PRECHARGE ON BOTTLES OR SPHERICAL** (III.A.2.d.)

- Start with manifold pressure at, or above, maximum acceptable pre-charge pressure:
  - a. {800 psi for a 1500 psi system} b. {1100 psi for 2000 and 3000 psi system}
- 1. Open bleed line to the tank, slowly. **(gauge needle will drop at the lowest bottle pressure)**
- 2. Close bleed line. Barely bump electric pump and see what pressure the needle jumps up to.
- 3. **Record pressure drop 1000 psi. Test fails if pressure drops below minimum.**
- **Minimum:** a. {700 psi for a 1500 psi system} b. {900 psi for a 2000 & 3000 psi system}

To Check - **THE CAPACITY OF THE ACCUMULATOR PUMPS** (III.A.2.f.)

- Isolate the accumulator bottles or spherical from the pumps & manifold.
- Open the bleed off valve to the tank, {manifold psi should go to 0 psi} close bleed valve.
  1. Open the HCR valve, {if applicable}
  2. Close annular
  3. With **pumps** only, time how long it takes to regain the required manifold pressure.
  4. **Record elapsed time 1:00. Test fails if it takes over 2 minutes.**
    - a. {950 psi for a 1500 psi system} b. {1200 psi for a 2000 & 3000 psi system}