

DISTRICT I  
1625 N. French Dr., Hobbs, NM 88240  
Phone: (575) 393-6161 Fax: (575) 393-0720

DISTRICT II  
811 S. First St., Artesia, NM 88210  
Phone: (575) 748-1283 Fax: (575) 748-9720

DISTRICT III  
1000 Rio Brazos Road, Aztec, NM 87410  
Phone: (505) 334-6178 Fax: (505) 334-6170

DISTRICT IV  
1220 S. St. Francis Dr., Santa Fe, NM 87505  
Phone: (505) 476-3460 Fax: (505) 476-3462

State of New Mexico  
Energy, Minerals & Natural Resources Department  
OIL CONSERVATION DIVISION  
1220 South St. Francis Dr.  
Santa Fe, New Mexico 87505

OIL CONSERVATION  
ARTESIA DISTRICT

APR 06 2017

Form C-102

Revised August 1, 2011

Submit one copy to appropriate  
District Office

RECEIVED

AMENDED REPORT

WELL LOCATION AND ACREAGE DEDICATION PLAT

API Number 30-015-42921	Pool Code 96217	Pool Name Willow Lake - Bone Spring SE
Property Code 314121	Property Name CORRAL CANYON FEDERAL	
OGRID No. 005380	Operator Name XTO ENERGY	Well Number 2H
		Elevation 2941'

Surface Location

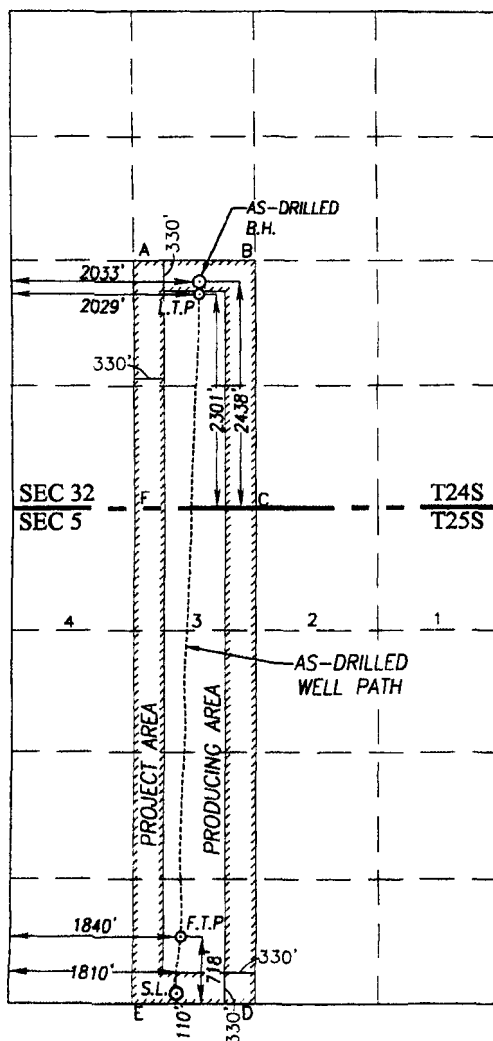
UL or lot No.	Section	Township	Range	Lot Idn	Feet from the	North/South line	Feet from the	East/West line	County
N	5	25-S	29-E		110	SOUTH	1810	WEST	EDDY

As-Drilled Bottom Hole Location If Different From Surface

UL or lot No.	Section	Township	Range	Lot Idn	Feet from the	North/South line	Feet from the	East/West line	County
K	32	24-S	29-E		2438	SOUTH	2033	WEST	EDDY

Dedicated Acres	Joint or Infill	Consolidation Code	Order No.
159.53			

NO ALLOWABLE WILL BE ASSIGNED TO THIS COMPLETION UNTIL ALL INTERESTS HAVE BEEN CONSOLIDATED OR A NON-STANDARD UNIT HAS BEEN APPROVED BY THE DIVISION



SCALE: 1"=2000'

AS-DRILLED BOTTOM HOLE LOCATION NAD 27 NME Y=426836.0 N X=600645.7 E LAT.=32.173071° N LONG.=104.008053° W	AS-DRILLED BOTTOM HOLE LOCATION NAD 83 NME Y=426894.6 N X=641829.9 E LAT.=32.173194° N LONG.=104.008541° W
LAST TAKE POINT NAD 27 NME Y=426699.2 N X=600642.7 E LAT.=32.172695° N LONG.=104.008064° W	LAST TAKE POINT NAD 83 NME Y=426757.7 N X=641826.9 E LAT.=32.172818° N LONG.=104.008552° W

CORNER COORDINATES TABLE

NAD 27 NME	
A - Y=427061.3 N, X=599932.8 E	
B - Y=427059.1 N, X=601249.0 E	
C - Y=424399.4 N, X=601264.7 E	
D - Y=419118.8 N, X=601262.5 E	
E - Y=419128.6 N, X=599933.6 E	
F - Y=424398.5 N, X=599950.7 E	
NAD 83 NME	
A - Y=427119.9 N, X=641117.0 E	
B - Y=427117.7 N, X=642433.3 E	
C - Y=424457.9 N, X=642449.0 E	
D - Y=419177.2 N, X=642446.9 E	
E - Y=419187.0 N, X=641118.0 E	
F - Y=424456.9 N, X=641135.0 E	
FIRST TAKE POINT	
NAD 27 NME	NAD 83 NME
Y=419843.1 N	Y=419901.5 N
X=600449.0 E	X=641633.4 E
LAT.=32.153849° N	LAT.=32.153973° N
LONG.=104.008757° W	LONG.=104.009244° W
GEODETIC COORDINATES	
NAD 27 NME	NAD 83 NME
SURFACE LOCATION	SURFACE LOCATION
Y=419235.0 N	Y=419293.4 N
X=600415.0 E	X=641599.5 E
LAT.=32.152178° N	LAT.=32.152301° N
LONG.=104.008872° W	LONG.=104.009359° W

OPERATOR CERTIFICATION

I hereby certify that the information herein is true and complete to the best of my knowledge and belief, and that this organization either owns a working interest or unleased mineral interest in the land including the proposed bottom hole location or has a right to drill this well at this location pursuant to a contract with an owner of such mineral or working interest, or to a voluntary pooling agreement or a compulsory pooling order heretofore entered by the division.

Signature: Patricia Doncel 3/29/17  
Date: 3/29/17  
Printed Name: Patricia Doncel  
E-mail Address: Patricia.Doncel@xtoenergy.com

SURVEYOR CERTIFICATION

I hereby certify that the well location shown on this plat was plotted from field notes of actual surveys made by me or under my supervision, and that the same is true and correct to the best of my belief.

MARCH 6, 2014

Date of Survey  
Signature & Seal of Professional Surveyor:

Signature: Ronald J. Eason  
Certificate Number: Gary G. Eason 12641  
Ronald J. Eason 3239

ACK REL W/O: 14131188 JWS CWO: 16.13.0852