

UNITED STATES
DEPARTMENT OF THE INTERIOR
BUREAU OF LAND MANAGEMENTFORM APPROVED
OMB NO. 1004-0137
Expires: January 31, 2018**SUNDRY NOTICES AND REPORTS ON WELLS** **OCD Artesia**
*Do not use this form for proposals to drill or to re-enter an abandoned well. Use form 3160-3 (APD) for such proposals.*5. Lease Serial No.
NMNM56426

6. If Indian, Allottee or Tribe Name

7. If Unit or CA/Agreement, Name and/or No.

8. Well Name and No.
PAVO MACHO 31 B2MP FED 1H9. API Well No.
30-015-43786-00-S110. Field and Pool or Exploratory Area
PALMILLO-BONE SPRING, EAST11. County or Parish, State
EDDY COUNTY, NM**SUBMIT IN TRIPLICATE - Other instructions on page 2**

1. Type of Well

☒ Oil Well ☐ Gas Well ☐ Other2. Name of Operator
MEWBOURNE OIL COMPANYContact: JACKIE LATHAN
E-Mail: jlathan@mewbourne.com3a. Address
P O BOX 5270
HOBBS, NM 882413b. Phone No. (include area code)
Ph: 575-393-5905

4. Location of Well (Footage, Sec., T., R., M., or Survey Description)

Sec 31 T18S R29E SWSW 450FSL 215FWL

lot 4

12. CHECK THE APPROPRIATE BOX(ES) TO INDICATE NATURE OF NOTICE, REPORT, OR OTHER DATA

TYPE OF SUBMISSION

TYPE OF ACTION

☒ Notice of Intent☐ Subsequent Report☐ Final Abandonment Notice☐ Acidize☐ Alter Casing☐ Casing Repair☐ Change Plans☐ Convert to Injection☐ Deepen☐ Hydraulic Fracturing☐ New Construction☐ Plug and Abandon☐ Plug Back☐ Production (Start/Resume)☐ Reclamation☐ Recomplete☐ Temporarily Abandon☐ Water Disposal☐ Water Shut-Off☐ Well Integrity☒ Other
Surface Disturbance

13. Describe Proposed or Completed Operation: Clearly state all pertinent details, including estimated starting date of any proposed work and approximate duration thereof. If the proposal is to deepen directionally or recompleat horizontally, give subsurface locations and measured and true vertical depths of all pertinent markers and zones. Attach the Bond under which the work will be performed or provide the Bond No. on file with BLM/BIA. Required subsequent reports must be filed within 30 days following completion of the involved operations. If the operation results in a multiple completion or recompleat in a new interval, a Form 3160-4 must be filed once testing has been completed. Final Abandonment Notices must be filed only after all requirements, including reclamation, have been completed and the operator has determined that the site is ready for final inspection.

07/13/16 Mewbourne Oil would like to install a 4" surface poly SWD line following existing disturbance from the Pavo Macho 31 B2MP Fed #1H through Section 31 onto New Mexico State Trust Lands.

Bond on file: NM1693 nationwide & NMB000919

BLM CONSERVATION
ARTESIA DISTRICT

APR 10 2017

RECEIVED

14. I hereby certify that the foregoing is true and correct.

Electronic Submission #344495 verified by the BLM Well Information System

For MEWBOURNE OIL COMPANY, sent to the Carlsbad

Committed to AFMSS for processing by PRISCILLA PEREZ on 07/14/2016 (16PP1696SE)

Name (Printed/Typed) JACKIE LATHAN

Title AUTHORIZED REPRESENTATIVE

Signature (Electronic Submission)

Date 07/13/2016

THIS SPACE FOR FEDERAL OR STATE OFFICE USE

Approved By

Title

FIELD MANAGER

Date

07/16/16

Conditions of approval, if any, are attached. Approval of this notice does not warrant or certify that the applicant holds legal or equitable title to those rights in the subject lease which would entitle the applicant to conduct operations thereon.

Office BLM-CARLSBAD FIELD OFFICE

Title 18 U.S.C. Section 1001 and Title 43 U.S.C. Section 1212, make it a crime for any person knowingly and willfully to make to any department or agency of the United States any false, fictitious or fraudulent statements or representations as to any matter within its jurisdiction.

(Instructions on page 2)

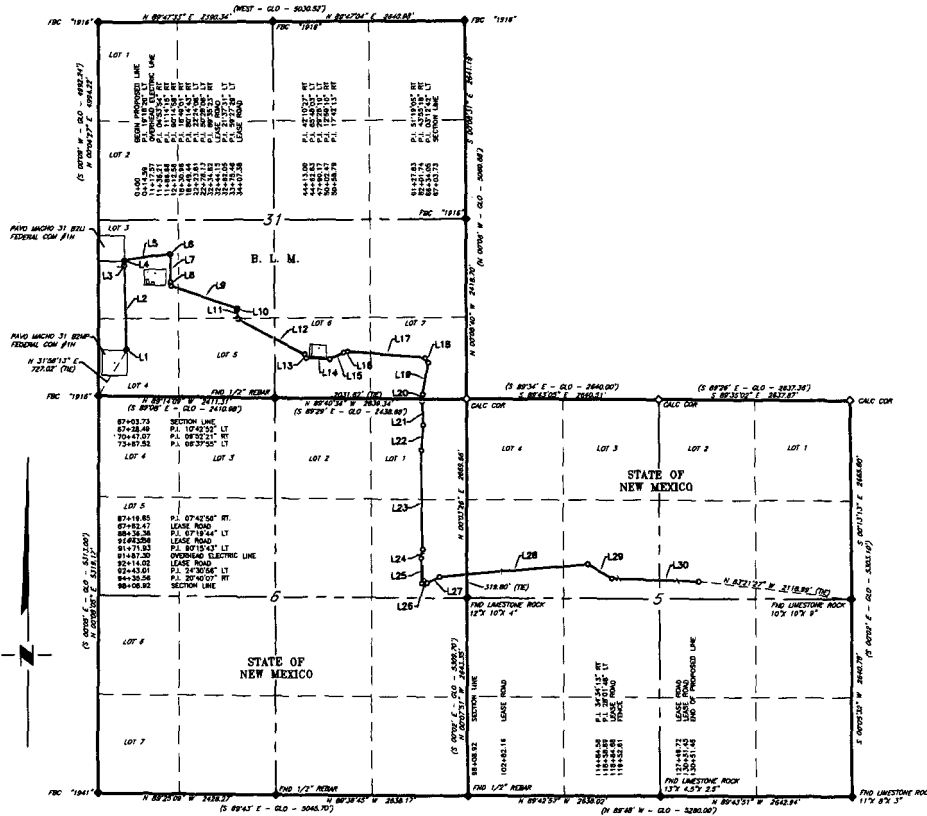
**** BLM REVISED ** BLM REVISED ** BLM REVISED ** BLM REVISED ** BLM REVISED ****

01P4-18.17

Revisions to Operator-Submitted EC Data for Sundry Notice #344495

	Operator Submitted	BLM Revised (AFMSS)
Sundry Type:	DISTURB SR	DISTURB NOI
Lease:	NMNM56426	NMNM56426
Agreement:		
Operator:	MEWBOURNE OIL COMPANY PO BOX 5270 HOBBS, NM 88241 Ph: 575-393-5905	MEWBOURNE OIL COMPANY P O BOX 5270 HOBBS, NM 88241 Ph: 575.393.5905
Admin Contact:	JACKIE LATHAN AUTHORIZED REPRESENTATIVE E-Mail: jlathan@mewbourne.com Ph: 575-393-5905	JACKIE LATHAN AUTHORIZED REPRESENTATIVE E-Mail: jlathan@mewbourne.com Ph: 575-393-5905
Tech Contact:	JACKIE LATHAN AUTHORIZED REPRESENTATIVE E-Mail: jlathan@mewbourne.com Ph: 575-393-5905	JACKIE LATHAN AUTHORIZED REPRESENTATIVE E-Mail: jlathan@mewbourne.com Ph: 575-393-5905
Location:		
State:	NM	NM
County:	EDDY	EDDY
Field/Pool:	PALMILLO EAST BONE SPRING	PALMILLO-BONE SPRING, EAST
Well/Facility:	PAVO MACHHO 31 B2MP FED 1H Sec 31 T18S R29E Mer NMP SWSW 450FSL 2158FWL	PAVO MACHO 31 B2MP FED 1H Sec 31 T18S R29E SWSW 450FSL 215FWL

MEWBORNE OIL COMPANY
OVERALL OF PROPOSED 4" SWD SURFACE POLY LINE
FOR THE PAVO MACHO 31 B2MP FEDERAL COM #1H
SECTION 31, T18S, R29E, & SECTIONS 5 & 6, T19S, R29E
N. M. P. M., EDDY CO., NEW MEXICO



LINE TABLE		
LINE	BEARING	LENGTH
L1	N 17°50'55" E	14.59'
L2	N 01°27'25" W	1121.62'
L3	N 03°26'29" E	50.67'
L4	N 07°47'46" W	25.70'
L5	N 82°27'12" E	618.40'
L6	S 78°43'47" E	18.46'
L7	S 01°30'56" W	374.17'
L8	S 20°53'12" E	54.52'
L9	S 71°21'18" E	956.69'
L10	S 18°14'05" W	27.23'
L11	S 03°23'26" E	113.43'
L12	S 62°50'55" E	1037.52'
L13	S 20°40'28" E	49.63'
L14	S 86°28'31" E	327.54'
L15	N 64°03'21" E	212.30'

LINE TABLE		
LINE	BEARING	LENGTH
L16	N 77°02'31" E	56.32'
L17	S 85°15'16" E	1069.04'
L18	S 33°56'11" E	73.91'
L19	S 09°59'07" W	432.31'
L20	S 06°46'25" W	94.44'
L21	S 03°56'27" E	318.58'
L22	S 05°55'54" W	340.45'
L23	S 00°42'01" E	1332.13'
L24	S 07°00'49" W	116.73'
L25	S 00°18'55" E	335.55'
L26	N 89°25'22" E	71.08'
L27	N 64°54'26" E	192.55'
L28	N 85°34'33" E	2049.02'
L29	S 59°51'14" E	374.31'
L30	S 87°53'02" E	1192.56'

LEGEND
 () RECORD DATA - GLO
 ♦ FOUND MONUMENT
 AS NOTED
 — PROPOSED 4" SURFACE SWD LINE
 Firm No.: TX 10193838 NM 4655451

SCALE: 1" = 2000'
 0 1000' 2000'
 BEARINGS ARE GRID NAD 27
 NM EAST
 DISTANCES ARE HORIZ. GROUND.
 Copyright 2014 - All Rights Reserved

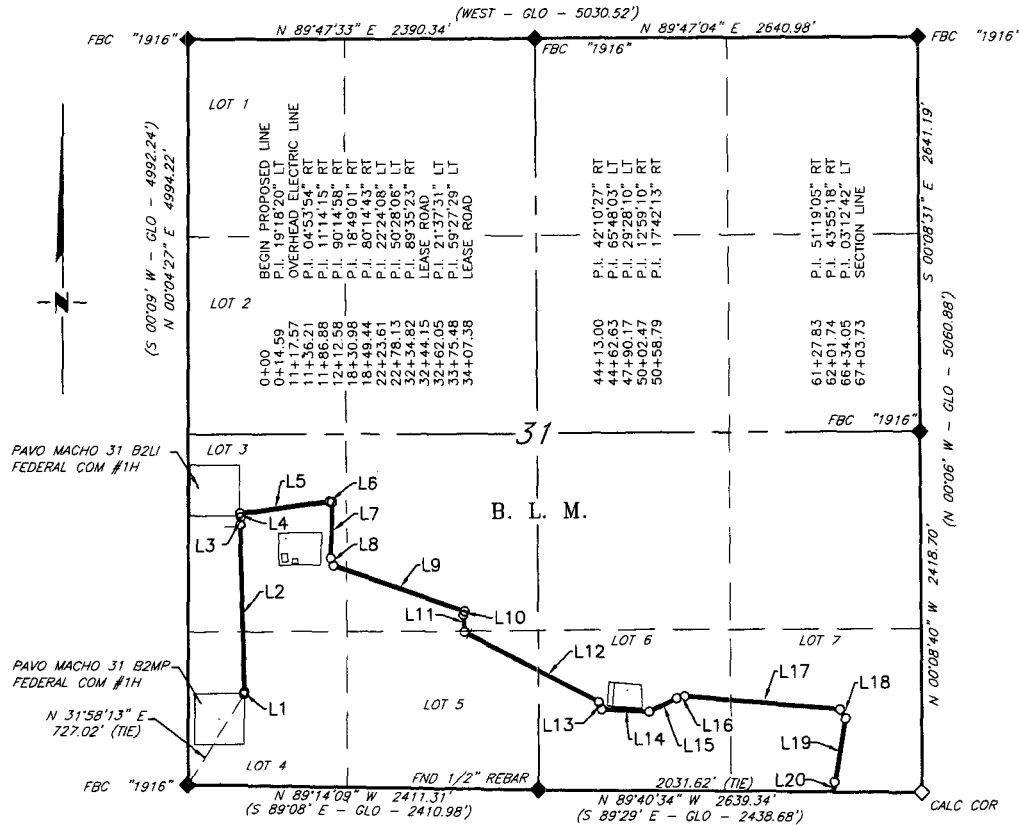
NO.	REVISION	DATE
JOB NO.:	LS1605171	
DWG. NO.:	1605171-1	

RRC

308 W. BROADWAY ST., HOBBS, NM 88240 (575) 964-8200

SCALE: 1" = 2000'
DATE: 5-9-2016
SURVEYED BY: BK/HD
DRAWN BY: JR
APPROVED BY: RMH
SHEET: 1 OF 7

MEWBOURNE OIL COMPANY
PROPOSED 4" SWD SURFACE POLY LINE
FOR THE PAVO MACHO 31 B2MP FEDERAL COM #1H
SECTION 31, T18S, R29E,
N. M. P. M., EDDY CO., NEW MEXICO



LINE TABLE		
LINE	BEARING	LENGTH
L1	N 17°50'55" E	14.59'
L2	N 01°27'25" W	1,121.62'
L3	N 03°26'29" E	50.67'
L4	N 07°47'46" W	25.70'
L5	N 82°27'12" E	618.40'
L6	S 78°43'47" E	18.46'
L7	S 01°30'56" W	374.17'
L8	S 20°53'12" E	54.52'
L9	S 71°21'18" E	956.69'
L10	S 18°14'05" W	27.23'

LINE TABLE		
LINE	BEARING	LENGTH
L11	S 03°23'26" E	113.43'
L12	S 62°50'55" E	1,037.52'
L13	S 20°40'28" E	49.63'
L14	S 86°28'31" E	327.54'
L15	N 64°03'21" E	212.30'
L16	N 77°02'31" E	56.32'
L17	S 85°15'16" E	1,069.04'
L18	S 33°56'11" E	73.91'
L19	S 09°59'07" W	432.31'
L20	S 06°46'25" W	69.68'

SCALE: 1" = 1000'
0 500' 1000'

BEARINGS ARE GRID NAD 27
NM EAST
DISTANCES ARE HORIZ. GROUND.

LEGEND
() RECORD DATA - GLO
◆ FOUND MONUMENT AS NOTED
— PROPOSED 4" SURFACE SWD LINE

I, R. M. Howett, a N. M. Professional Surveyor, hereby certify that I prepared this plat from an actual survey made on the ground under my direct supervision, said survey and plat meet the Min. Stds. for Land Surveying in the State of N. M. and are true and correct to the best of my knowledge and belief.

Robert M. Howett
Robert M. Howett NM PS 19680



Firm No.: TX 10193838 NM 4655451

Copyright 2014 - All Rights Reserved

NO.	REVISION	DATE
JOB NO.:	LS1605171	
DWG. NO.:	1605171-2	

RRC

308 W. BROADWAY ST., HOBBS, NM 88240 (575) 964-8200

SCALE: 1" = 1000'
DATE: 5-9-2016
SURVEYED BY: BK/HD
DRAWN BY: JR
APPROVED BY: RMH
SHEET : 2 OF 7

MEWBOURNE OIL COMPANY
PROPOSED 4" SWD SURFACE POLY LINE
FOR THE PAVO MACHO 31 B2MP FEDERAL COM #1H
SECTION 31, T18S, R29E,
N. M. P. M., EDDY CO., NEW MEXICO

DESCRIPTION

A strip of land 30 feet wide, being 6,703.73 feet or 406.287 rods in length, lying in Section 31, Township 18 South, Range 29 East, N. M. P. M., Eddy County, New Mexico, being 15 feet left and 15 feet right of the following described survey of a centerline across B. L. M. land:

BEGINNING at Engr. Sta. 0+00, a point in Lot 4 of Section 31, which bears, N 31°58'13" E, 727.02 feet, from a brass cap, stamped "1916", found for the Southwest corner of Section 31;

Thence N 17°50'55" E, 14.59 feet, to Engr. Sta. 0+14.59, a P. I. 19°18'20" left;

Thence N 01°27'25" W, 1,121.62 feet, to Engr. Sta. 11+36.21, a P. I. 04°53'54" right;

Thence N 03°26'29" E, 50.67 feet, to Engr. Sta. 11+86.88, a P. I. 11°14'15" right;

Thence N 07°47'46" W, 25.70 feet, to Engr. Sta. 12+12.58, a P. I. 90°14'58" right;

Thence N 82°27'12" E, 618.40 feet, to Engr. Sta. 18+30.98, a P. I. 18°49'01" right;

Thence S 78°43'47" E, 18.46 feet, to Engr. Sta. 18+49.44, a P. I. 80°14'43" right;

Thence S 01°30'56" W, 374.17 feet, to Engr. Sta. 22+23.61, a P. I. 22°24'08" left;

Thence S 20°53'12" E, 54.52 feet, to Engr. Sta. 22+78.13, a P. I. 50°28'06" left;

Thence S 71°21'18" E, 956.69 feet, to Engr. Sta. 32+34.82, a P. I. 89°35'23" right;

Thence S 18°14'05" W, 27.23 feet, to Engr. Sta. 32+62.05, a P. I. 21°37'31" left;

Thence S 03°23'26" E, 113.43 feet, to Engr. Sta. 33+75.48, a P. I. 59°27'29" left;

Thence S 62°50'55" E, 1,037.52 feet, to Engr. Sta. 44+13.00, a P. I. 42°10'27" right;

Thence S 20°40'28" E, 49.63 feet, to Engr. Sta. 44+62.63, a P. I. 65°48'03" left;

Thence S 86°28'31" E, 327.54 feet, to Engr. Sta. 47+90.17, a P. I. 29°28'10" left;

Thence N 64°03'21" E, 212.30 feet, to Engr. Sta. 50+02.47, a P. I. 12°59'10" right;

Thence N 77°02'31" E, 56.32 feet, to Engr. Sta. 50+58.79, a P. I. 17°42'13" right;

Thence S 85°15'16" E, 1,069.04 feet, to Engr. Sta. 61+27.83, a P. I. 51°19'05" right;

Thence S 33°56'11" E, 73.91 feet, to Engr. Sta. 62+01.74, a P. I. 43°55'18" right;

Thence S 09°59'07" W, 432.31 feet, to Engr. Sta. 66+34.05, a P. I. 03°12'42" left;

Thence S 06°46'25" W, 69.68 feet, to Engr. Sta. 67+03.73, a point on the South line of of Section 31, which bears, S 89°40'34" E, 2,031.62 feet, from a 1/2" rebar, found for the South quarter corner of Section 31.

Said strip of land contains 4.617 acres, more or less, and is allocated by forties as follows:

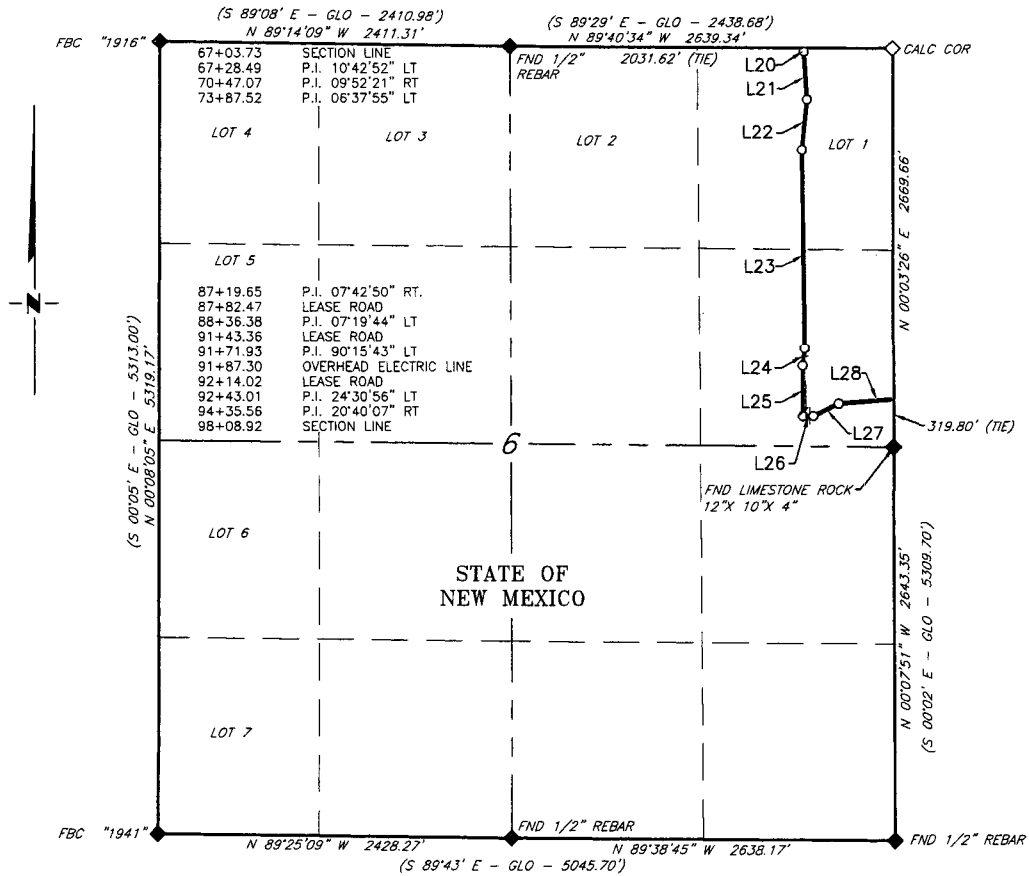
Lot 4	25.340 Rods	0.288 Acres
Lot 3	118.220 Rods	1.343 Acres
NE 1/4 SW 1/4	60.738 Rods	0.690 Acres
Lot 5	34.536 Rods	0.393 Acres
Lot 6	86.666 Rods	0.985 Acres
Lot 3	80.787 Rods	0.918 Acres

Firm No.: TX 10193838 NM 4655451

Copyright 2014 - All Rights Reserved

			SCALE: 1" = 1000'		
			DATE: 5-9-2016		
			SURVEYED BY: BK/HD		
			DRAWN BY: JR		
NO.	REVISION	DATE	308 W. BROADWAY ST., HOBBS, NM 88240 (575) 964-8200		
JOB NO.: LS1605171					
DWG. NO.: 1605171-3					
			APPROVED BY: RMH		
			SHEET : 3 OF 7		

MEWBOURNE OIL COMPANY
PROPOSED 4" SWD SURFACE POLY LINE
FOR THE PAVO MACHO 31 B2MP FEDERAL COM #1H
SECTION 6, T19S, R29E,
N. M. P. M., EDDY CO., NEW MEXICO



LINE TABLE		
LINE	BEARING	LENGTH
L20	S 06°46'25" W	24.76'
L21	S 03°56'27" E	318.58'
L22	S 05°55'54" W	340.45'
L23	S 00°42'01" E	1,332.13'
L24	S 07°00'49" W	116.73'
L25	S 00°18'55" E	335.55'
L26	N 89°25'22" E	71.08'
L27	N 64°54'26" E	192.55'
L28	N 85°34'33" E	373.36'

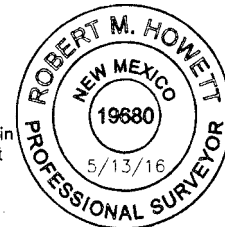
SCALE: 1" = 1000'
0 500' 1000'

BEARINGS ARE GRID NAD 27
NM EAST
DISTANCES ARE HORIZ. GROUND.

LEGEND
() RECORD DATA - GLO
◆ FOUND MONUMENT AS NOTED
— PROPOSED 4" SURFACE SWD LINE

I, R. M. Howett, a N. M. Professional Surveyor, hereby certify that I prepared this plat from an actual survey made on the ground under my direct supervision, said survey and plat meet the Min. Stds. for Land Surveying in the State of N. M. and are true and correct to the best of my knowledge and belief.

Robert M. Howett
Robert M. Howett NM PS 19680



Firm No. TX 10193838 NM 4655451

Copyright 2014 - All Rights Reserved

NO.	REVISION	DATE
JOB NO.:	LS1605171	
DWG. NO.:	1605171-4	

RRC

308 W. BROADWAY ST., HOBBS, NM 88240 (575) 964-8200

SCALE: 1" = 1000'
DATE: 5-9-2016
SURVEYED BY: BK/HD
DRAWN BY: JR
APPROVED BY: RMH
SHEET : 4 OF 7

MEWBOURNE OIL COMPANY
PROPOSED 4" SWD SURFACE POLY LINE
FOR THE PAVO MACHO 31 B2MP FEDERAL COM #1H
SECTION 6, T19S, R29E,
N. M. P. M., EDDY CO., NEW MEXICO

DESCRIPTION

A strip of land 30 feet wide, being 3,105.19 feet or 188.193 rods in length lying in Section 6, Township 19 South, Range 29 East, N. M. P. M., Eddy County, New Mexico, being 15 feet left and 15 feet right of the following described survey of a centerline across State of New Mexico land:

BEGINNING at Engr. Sta. 67+03.73, a point on the North line of Section 6, which bears, S 89°40'34" E, 2,031.62 feet, from a 1/2" rebar, found for the North quarter corner of Section 6;

Thence S 06°46'25" W, 24.76 feet, to Engr. Sta. 67+28.49, a P. I. 10°42'52" left;

Thence S 03°56'27" E, 318.58 feet, to Engr. Sta. 70+47.07, a P. I. 09°52'21" right;

Thence S 05°55'54" W, 340.45 feet, to Engr. Sta. 73+87.52, a P. I. 06°37'55" left;

Thence S 00°42'01" E, 1,332.13 feet, to Engr. Sta. 87+19.65, a P. I. 07°42'50" right;

Thence S 07°00'49" W, 116.73 feet, to Engr. Sta. 88+36.38, a P. I. 07°19'44" left;

Thence S 00°18'55" E, 335.55 feet, to Engr. Sta. 91+71.93, a P. I. 90°15'43" left;

Thence N 89°25'22" E, 71.08 feet, to Engr. Sta. 92+43.01, a P. I. 24°30'56" left;

Thence N 64°54'26" E, 192.55 feet, to Engr. Sta. 94+35.56, a P. I. 20°40'07" right;

Thence N 85°34'33" E, 373.36 feet, to Engr. Sta. 98+08.92, a point on the East line of of Section 6, which bears, N 00°03'26" E, 319.80 feet, from a 12"x 10"x 4" Limestone rock, found for the East quarter corner of Section 6.

Said strip of land contains 2.138 acres, more or less, and is allocated by forties as follows:

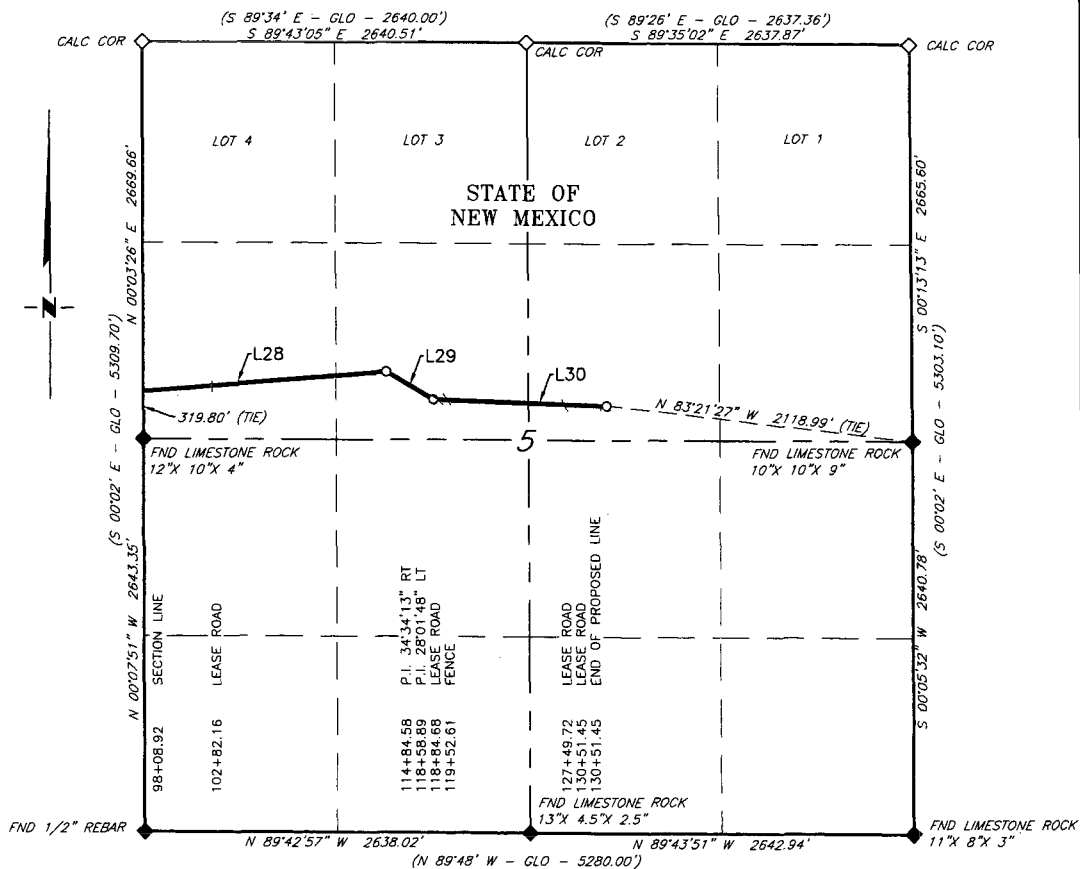
Lot 1	81.865 Rods	0.930 Acres
SE 1/4 NE 1/4	106.328 Rods	1.208 Acres

Firm No.: TX 10193838 NM 4655451

Copyright 2014 - All Rights Reserved

<div style="font-size: 48px; font-weight: bold; margin: 0;">RRC</div> <div style="font-size: 10px; margin-top: 10px;">308 W. BROADWAY ST., HOBBS, NM 88240 (575) 964-8200</div>			SCALE: 1" = 1000'
			DATE: 5-9-2016
			SURVEYED BY: BK/HD
			DRAWN BY: JR
NO.	REVISION	DATE	APPROVED BY: RMH
JOB NO.: LS1605171			SHEET : 5 OF 7
DWG. NO.: 1605171-5			

MEWBOURNE OIL COMPANY
PROPOSED 4" SWD SURFACE POLY LINE
FOR THE PAVO MACHO 31 B2MP FEDERAL COM #1H
SECTION 5, T19S, R29E,
N. M. P. M., EDDY CO., NEW MEXICO



LINE TABLE		
LINE	BEARING	LENGTH
L28	N 85°34'33" E	1675.66'
L29	S 59°51'14" E	374.31'
L30	S 87°53'02" E	1,192.56'

SCALE: 1" = 1000'
0 500' 1000'

BEARINGS ARE GRID NAD 27
NM EAST
DISTANCES ARE HORIZ. GROUND.

LEGEND
() RECORD DATA - GLO
◆ FOUND MONUMENT
AS NOTED
— PROPOSED 4"
SURFACE SWD LINE

I, R. M. Howett, a N. M. Professional Surveyor, hereby certify that I prepared this plat from an actual survey made on the ground under my direct supervision, said survey and plat meet the Min. Stds. for Land Surveying in the State of N. M. and are true and correct to the best of my knowledge and belief.

Robert M. Howett
Robert M. Howett NM PS 19680



Firm No. TX 10193838 NM 4655451

Copyright 2014 - All Rights Reserved

NO.	REVISION	DATE
JOB NO.:	LS1605171	
DWG. NO.:	1605171-6	

RRC

308 W. BROADWAY ST., HOBBS, NM 88240 (575) 964-8200

SCALE: 1" = 1000'
DATE: 5-9-2016
SURVEYED BY: BK/HD
DRAWN BY: JR
APPROVED BY: RMH
SHEET: 6 OF 7

MEWBOURNE OIL COMPANY
PROPOSED 4" SWD SURFACE POLY LINE
FOR THE PAVO MACHO 31 B2MP FEDERAL COM #1H
SECTION 5, T19S, R29E,
N. M. P. M., EDDY CO., NEW MEXICO

DESCRIPTION

A strip of land 30 feet wide, being 3,242.53 feet or 196.517 rods in length, lying in Section 5, Township 19 South, Range 29 East, N. M. P. M., Eddy County, New Mexico, being 15 feet left and 15 feet right of the following described survey of a centerline across State of New Mexico land:

BEGINNING at Engr. Sta. 98+08.92, a point on the West line of Section 5, which bears, N 00°03'26" E, 319.80 feet, from a 12" x 10" x 4" Limestone rock, found for the East quarter corner of Section 5;

Thence N 85°34'33" E, 1,675.66 feet, to Engr. Sta. 114+84.58, a P. I. 34°34'13" right;

Thence S 59°51'14" E, 374.31 feet, to Engr. Sta. 118+58.89, a P. I. 28°01'48" left;

Thence S 87°53'02" E, 1,192.56 feet, to Engr. Sta. 130+51.45, the End of Survey, a point in the Northeast quarter of of Section 5, which bears, N 83°21'27" W, 2,118.99 feet, from a 10"x 10"x 9" Limestone rock, found for the East quarter corner of Section 5.

Said strip of land contains 2.233 acres, more or less, and is allocated by forties as follows:

SE 1/4 NE 1/4	80.451 Rods	0.914 Acres
SE 1/4 NW 1/4	83.142 Rods	0.945 Acres
SW 1/4 NE 1/4	32.924 Rods	0.374 Acres

Firm No.: TX 10193838 NM 4655451

Copyright 2014 - All Rights Reserved

NO.	REVISION	DATE
JOB NO.:	LS1605171	
DWG. NO.:	1605171-7	

RRC

308 W. BROADWAY ST., HOBBS, NM 88240 (575) 964-8200

SCALE: 1" = 1000'
DATE: 5-9-2016
SURVEYED BY: BK/HD
DRAWN BY: JR
APPROVED BY: RMH
SHEET : 7 OF 7

Form 3160-5
(August 2007)

UNITED STATES
DEPARTMENT OF THE INTERIOR
BUREAU OF LAND MANAGEMENT

SUNDRY NOTICES AND REPORTS ON WELLS

Do not use this form for proposals to drill or to re-enter an abandoned well.
Use Form 3160-3 (APD) for such proposals.

Bold* fields are required.

Section 1 - Completed by Operator	
1. BLM Office* Carlsbad, NM	2. Well Type* OIL
3. Submission Type* <input type="radio"/> Notice of Intent <input checked="" type="radio"/> Subsequent Report	4. Action* Surface Disturbance
Operating Company Information	
5. Company Name* MEWBOURNE OIL COMPANY 6. Address* PO BOX 5270 HOBBS NM 88241	
Administrative Contact Information	
7. Phone Number* 575-393-5905 8. Contact Name* JACKIE _ LATHAN 9. Title* AUTHORIZED REPRESENTATIVE 10. Address* PO BOX 5270 HOBBS NM 88421 11. Phone Number* 575-393-5905 12. Mobile Number _____ 13. E-mail* jlathan@mewbourne.com 14. Fax Number _____	
Technical Contact Information	

☒ Check here if Technical Contact is the same as Administrative Contact.

15. Contact Name* _____

16. Title* _____

17. Address* _____

18. Phone Number* _____

19. Mobile Number _____

20. E-mail* _____

21. Fax Number _____

22. Lease Serial Number* _____

NMNM56426

Lease and Agreement

24. If Unit or CA/Agreement, Name and/or Number _____

25. Field and Pool, or Exploratory Area* _____

PALMILLO EAST BONE SPRING

26. County or Parish, State* _____

EDDY NM

County and State for Well

Associated Well Information

27. Specify well using one of the following methods:

- a) Well Name, Well Number, API Number, Section, Township, Range, Qtr/Qtr, N/S Footage, E/W Footage
b) Well Name, Well Number, API Number, Latitude, Longitude, Metes & Bounds description

Well Name* PAVO MACHHO 31 B2MP FED		Well Number* 1H	API Number 30-015-43786
Section 31	Township 18S	Range 29E	Meridian NEW MEXICO PRINCIPAL
Qtr/Qtr SW/SW	N/S Footage 450 FSL		E/W Footage 2158 FWL
Latitude _____	Longitude _____	Metes and Bounds _____	

28. Describe Proposed or Completed Operation

Clearly state all pertinent details, including estimated starting date of any proposed work and approximate duration thereof. If the proposal is to deepen directionally or recomplete horizontally, give subsurface locations and measured and true vertical depths of all markers and zones. Attach the Bond under which the work will be performed or provide the Bond Number on file pertinent with BLM/BIA. Required subsequent reports shall be filed within 30 days following completion of the involved operations. If the operation results in a multiple completion or recompletion in a new interval, a Form 3160-4 shall be filed once testing has been completed. Final

Abandonment Notices shall be filed only after all requirements, including reclamation, have been completed, and the operator has determined that the site is ready for final inspection.

07/13/16 Mewbourne Oil would like to install a 6" buried poly SWD line following existing --BCB 2-13-17 disturbance from the Pavo Macho 31 B2MP Fed #1H through Section 31 onto New Mexico State Trust Lands.

Bond on file: NM1693 nationwide & NMB0000919

I hereby certify that the foregoing is true and correct.

29. Name*
JACKIE _ LATHAN

30. Title
AUTHORIZED REPRESENTATIVE

31. Date* (MM/DD/YYYY)
07/13/2016 Today

32. Signature*

You have the ability to sign this form only if a SmartCard or digital certificate has been issued to you.

Title 18 U.S.C. Section 1001 and Title 43 U.S.C. Section 1212, make it a crime for any person knowingly and willfully to make to any department or agency of the United States any false, fictitious or fraudulent statements or representations as to any matter within its jurisdiction.

Section 2 - System Receipt Confirmation	
33. Transaction 344495	34. Date Sent 07/13/2016
35. Processing Office Carlsbad, NM	

Section 3 - Internal Review #1 Status	
36. Review Category	37. Date Completed
38. Reviewer Name	
39. Comments	

Section 4 - Internal Review #2 Status	
40. Review Category	41. Date Completed
42. Reviewer Name	
43. Comments	

Section 5 - Internal Review #3 Status	
44. Review Category	45. Date Completed
46. Reviewer Name	
47. Comments	

Section 6 - Internal Review #4 Status	
48. Review Category	49. Date Completed
50. Reviewer Name	
51. Comments	

Section 7 - Final Approval Status			
52. Disposition	53. Date Completed	54. Reviewer Name	55. Reviewer Title
56. Comments			

GENERAL INSTRUCTIONS

This form is designed for submitting proposals to perform certain well operations, and reports of such operations when completed, as indicated on Federal and Indian lands pursuant to applicable Federal law and regulations. Any necessary special instructions concerning the use of this form and the number of copies to be submitted, particularly with regard local area, or regional procedures and practices, either are shown below will be issued by, or may be obtained from the local Federal office.

SPECIFIC INSTRUCTIONS

Item 27 - Locations on Federal or Indian land should be described in accordance with Federal requirements. Consult the local Federal office for specific instructions.

Item 28 - Proposals to abandon a well and subsequent reports of abandonment should include such special information as is required by the local Federal office. In addition, such proposals and reports should include reasons for the abandonment; data on any former or present productive zones, or other zones with present significant fluid contents not sealed off by cement or otherwise; depths (top and bottom) and method of placement of cement plugs; mud or other material placed below, between and above plugs; amount, size, method of parting of any casing, liner or tubing pulled and the depth to top of any left in the hole; method of closing top of well and date well site conditioned for final inspection looking to approval of the abandonment.

NOTICE

The Privacy Act of 1974 and the regulation in 43 CFR 2.48(d) provide that you be furnished the following information in connection with information required by this application.

AUTHORITY: 30 U.S.C. 181 et seq., 351 et seq., 25 U.S.C. 396; 43 CFR 3160.

PRINCIPAL PURPOSE: The information is used to: (1) Evaluate, when appropriate, approve applications, and report completion of subsequent well operations, on a Federal or Indian lease; and (2) document for administrative use, information for the management, disposal and use of National Resource lands and resources, such as: (a) evaluating the equipment and procedures to be used during a proposed subsequent well operation and reviewing the completed well operations for compliance with the approved plan; (b) requesting and granting approval to perform those actions covered by 43 CFR 3162.3-2, 3162.3-3, and 3162.3-4; (c) reporting the beginning or resumption of production, as required by 43 CFR 3162.4-1(c) and (d) analyzing future applications to drill or modify operations in light of data obtained and methods used.

ROUTINE USES: Information from the record and/or the record will be transferred to appropriate Federal, State, local or foreign agencies, when relevant to civil, criminal or regulatory investigations or prosecutions in connection with congressional inquiries or to consumer reporting agencies to facilitate collection of debts owed the Government.

BLM LEASE NUMBER: NMNM56426

COMPANY NAME: Mewbourne Oil Company

ASSOCIATED WELL NAME: Pavo Macho 31 B2MP Fed 1H

BURIED PIPELINE STIPULATIONS

A copy of the application (Grant, APD, or Sundry Notice) and attachments, including conditions of approval, survey plat and/or map, will be on location during construction. BLM personnel may request to you a copy of your permit during construction to ensure compliance with all stipulations.

Holder agrees to comply with the following stipulations to the satisfaction of the Authorized Officer:

1. The Holder shall indemnify the United States against any liability for damage to life or property arising from the occupancy or use of public lands under this grant.
2. The Holder shall comply with all applicable Federal laws and regulations existing or hereafter enacted or promulgated. In any event, the holder shall comply with the Toxic Substances Control Act of 1976 as amended, 15 USC 2601 et seq. (1982) with regards to any toxic substances that are used, generated by or stored on the right-of-way or on facilities authorized under this right-of-way grant. (See 40 CFR Part 702-799 and especially, provisions on polychlorinated biphenyls, 40 CFR 761.1-761.193.) Additionally, any release of toxic substances (leaks, spills, etc.) in excess of the reportable quantity established by 40 CFR Part 117 shall be reported as required by the Comprehensive Environmental Response, Compensation, and Liability Act, section 102b. A copy of any report required or requested by any Federal agency or State government as a result of a reportable release or spill of any toxic substances shall be furnished to the authorized officer concurrent with the filing of the reports to the involved Federal agency or State government.
3. The holder agrees to indemnify the United States against any liability arising from the release of any hazardous substance or hazardous waste (as these terms are defined in the Comprehensive Environmental Response, Compensation and Liability Act of 1980, 42 U.S.C. 9601, et seq. or the Resource Conservation and Recovery Act, 42 U.S.C. 6901, et seq.) on the Right-of-Way (unless the release or threatened release is wholly unrelated to the Right-of-Way holder's activity on the Right-of-Way), or resulting from the activity of the Right-of-Way holder on the Right-of-Way. This agreement applies without regard to whether a release is caused by the holder, its agent, or unrelated third parties.
4. If, during any phase of the construction, operation, maintenance, or termination of the pipeline, any oil or other pollutant should be discharged from the pipeline system, impacting Federal lands, the control and total removal, disposal, and cleaning up of such oil or other pollutant, wherever found, shall be the responsibility of holder, regardless of fault. Upon failure of holder to control, dispose of, or clean up such discharge on or affecting Federal lands, or to repair all damages resulting therefrom, on the Federal lands, the Authorized Officer may take such measures as he deems necessary to control and clean up the discharge and restore the area, including where appropriate, the aquatic environment and fish and wildlife habitats, at the full expense of the holder. Such action by the Authorized Officer shall not relieve holder of any responsibility as provided herein.

5. All construction and maintenance activity will be confined to the authorized right-of-way.
6. The pipeline will be buried with a minimum cover of 36 inches between the top of the pipe and ground level.
7. The maximum allowable disturbance for construction in this right-of-way will be 30 feet:
- Blading of vegetation within the right-of-way will be allowed: maximum width of blading operations will not exceed 20 feet. The trench is included in this area. (*Blading is defined as the complete removal of brush and ground vegetation.*)
 - Clearing of brush species within the right-of-way will be allowed: maximum width of clearing operations will not exceed 30 feet. The trench and bladed area are included in this area. (*Clearing is defined as the removal of brush while leaving ground vegetation (grasses, weeds, etc.) intact. Clearing is best accomplished by holding the blade 4 to 6 inches above the ground surface.*)
 - The remaining area of the right-of-way (if any) shall only be disturbed by compressing the vegetation. (*Compressing can be caused by vehicle tires, placement of equipment, etc.*)
8. The holder shall stockpile an adequate amount of topsoil where blading is allowed. The topsoil to be stripped is approximately 6 inches in depth. The topsoil will be segregated from other spoil piles from trench construction. The topsoil will be evenly distributed over the bladed area for the preparation of seeding.
9. The holder shall minimize disturbance to existing fences and other improvements on public lands. The holder is required to promptly repair improvements to at least their former state. Functional use of these improvements will be maintained at all times. The holder will contact the owner of any improvements prior to disturbing them. When necessary to pass through a fence line, the fence shall be braced on both sides of the passageway prior to cutting of the fence. No permanent gates will be allowed unless approved by the Authorized Officer.
10. Vegetation, soil, and rocks left as a result of construction or maintenance activity will be randomly scattered on this right-of-way and will not be left in rows, piles, or berms, unless otherwise approved by the Authorized Officer. The entire right-of-way shall be recontoured to match the surrounding landscape. The backfilled soil shall be compacted and a 6 inch berm will be left over the ditch line to allow for settling back to grade.
11. In those areas where erosion control structures are required to stabilize soil conditions, the holder will install such structures as are suitable for the specific soil conditions being encountered and which are in accordance with sound resource management practices.
12. The holder will reseed all disturbed areas. Seeding will be done according to the attached seeding requirements, using the following seed mix.

- | | |
|--|--|
| <input type="checkbox"/> seed mixture 1 | <input type="checkbox"/> seed mixture 3 |
| <input checked="" type="checkbox"/> seed mixture 2 | <input type="checkbox"/> seed mixture 4 |
| <input type="checkbox"/> seed mixture 2/LPC | <input type="checkbox"/> Aplomado Falcon Mixture |

13. All above-ground structures not subject to safety requirements shall be painted by the holder to blend with the natural color of the landscape. The paint used shall be color which simulates "Standard Environmental Colors" – **Shale Green**, Munsell Soil Color No. 5Y 4/2.

14. The pipeline will be identified by signs at the point of origin and completion of the right-of-way and at all road crossings. At a minimum, signs will state the holder's name, BLM serial number, and the product being transported. All signs and information thereon will be posted in a permanent, conspicuous manner, and will be maintained in a legible condition for the life of the pipeline.

15. The holder shall not use the pipeline route as a road for purposes other than routine maintenance as determined necessary by the Authorized Officer in consultation with the holder before maintenance begins. The holder will take whatever steps are necessary to ensure that the pipeline route is not used as a roadway. As determined necessary during the life of the pipeline, the Authorized Officer may ask the holder to construct temporary deterrence structures.

16. Any cultural and/or paleontological resources (historic or prehistoric site or object) discovered by the holder, or any person working on his behalf, on public or Federal land shall be immediately reported to the Authorized Officer. Holder shall suspend all operations in the immediate area of such discovery until written authorization to proceed is issued by the Authorized Officer. An evaluation of the discovery will be made by the Authorized Officer to determine appropriate actions to prevent the loss of significant cultural or scientific values. The holder will be responsible for the cost of evaluation and any decision as to proper mitigation measures will be made by the Authorized Officer after consulting with the holder.

17. The operator shall be held responsible if noxious weeds become established within the areas of operations. Weed control shall be required on the disturbed land where noxious weeds exist, which includes associated roads, pipeline corridor and adjacent land affected by the establishment of weeds due to this action. The operator shall consult with the Authorized Officer for acceptable weed control methods, which include following EPA and BLM requirements and policies.

18. Escape Ramps - The operator will construct and maintain pipeline/utility trenches [that are not otherwise fenced, screened, or netted] to prevent livestock, wildlife, and humans from becoming entrapped. At a minimum, the operator will construct and maintain escape ramps, ladders, or other methods of avian and terrestrial wildlife escape in the trenches according to the following criteria:

- a. Any trench left open for eight (8) hours or less is not required to have escape ramps; however, before the trench is backfilled, the contractor/operator shall inspect the trench for wildlife, remove all trapped wildlife, and release them at least 100 yards from the trench.
- b. For trenches left open for eight (8) hours or more, earthen escape ramps (built at no more than a 30 degree slope and spaced no more than 500 feet apart) shall be placed in the trench.