

# NM OIL CONSERVATION

ARTESIA DISTRICT

FORM C-102

State of New Mexico  
Energy, Minerals & Natural Resources  
Department  
OIL CONSERVATION DIVISION  
1220 South St. Francis Dr.  
Sante Fe, NM 87505

APR 27 2017

Revised August 1, 2011

Submit one copy to appropriate

District Office

RECEIVED

☐ AMENDED REPORT

District I  
1625 N. French Dr., Hobbs, NM 88240  
Phone: (575) 393-6161 Fax: (575) 393-0720  
District II  
811 S. First St., Artesia, NM 88210  
Phone: (575) 748-1283 Fax: (575) 748-9720  
District III  
1000 Rio Brazos Road, Aztec, NM 87410  
Phone: (505) 334-6178 Fax: (505) 334-6170  
District IV  
1220 S. St. Francis Dr., Sante Fe, NM 87505  
Phone: (505) 476-3460 Fax: (505) 476-3462

## WELL LOCATION AND ACREAGE DEDICATION PLAT

<sup>1</sup> API Number 30-015-43774	<sup>2</sup> Pool Code 98220	<sup>3</sup> Pool Name PURPLE SAGE; WOLFCAMP (GAS)
<sup>4</sup> Property Code 316197	<sup>5</sup> Property Name BRANTLEY STATE COM 13 24 27 RB	<sup>6</sup> Well Number #221H
<sup>7</sup> GRID No. 228937	<sup>8</sup> Operator Name MATADOR PRODUCTION COMPANY	<sup>9</sup> Elevation 3089'

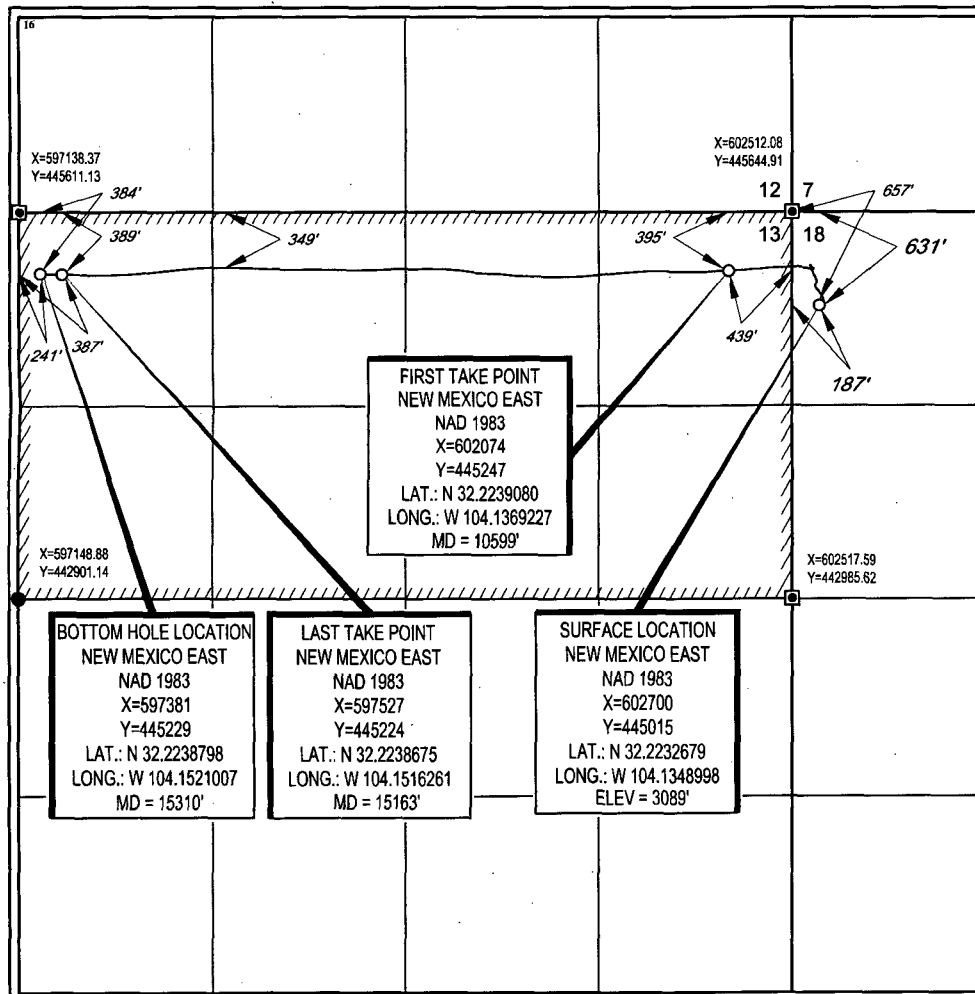
### <sup>10</sup>Surface Location

UL or lot no.	Section	Township	Range	Lot Idn	Feet from the	North/South line	Feet from the	East/West line	County
1	18	24-S	28-E	-	631'	NORTH	187'	WEST	EDDY

UL or lot no.	Section	Township	Range	Lot Idn	Feet from the	North/South line	Feet from the	East/West line	County
D	13	24-S	27-E	-	384'	NORTH	241'	WEST	EDDY

<sup>12</sup> Dedicated Acres 320	<sup>13</sup> Joint or Infill	<sup>14</sup> Consolidation Code	<sup>15</sup> Order No.
--------------------------------------	-------------------------------	----------------------------------	-------------------------

No allowable will be assigned to this completion until all interests have been consolidated or a non-standard unit has been approved by the division.



### <sup>17</sup>OPERATOR CERTIFICATION

I hereby certify that the information contained herein is true and complete to the best of my knowledge and belief, and that this organization either owns a working interest or unleased mineral interest in the land including the proposed bottom hole location or has a right to drill this well at this location pursuant to a contract with an owner of such a mineral or working interest, or to a voluntary pooling agreement or a compulsory pooling order heretofore entered by the division.

*Trey Goodwin* 4/20/17  
Signature Date

Trey Goodwin

Printed Name

tgoodwin@matadorresources.com

E-mail Address

### <sup>18</sup>SURVEYOR CERTIFICATION

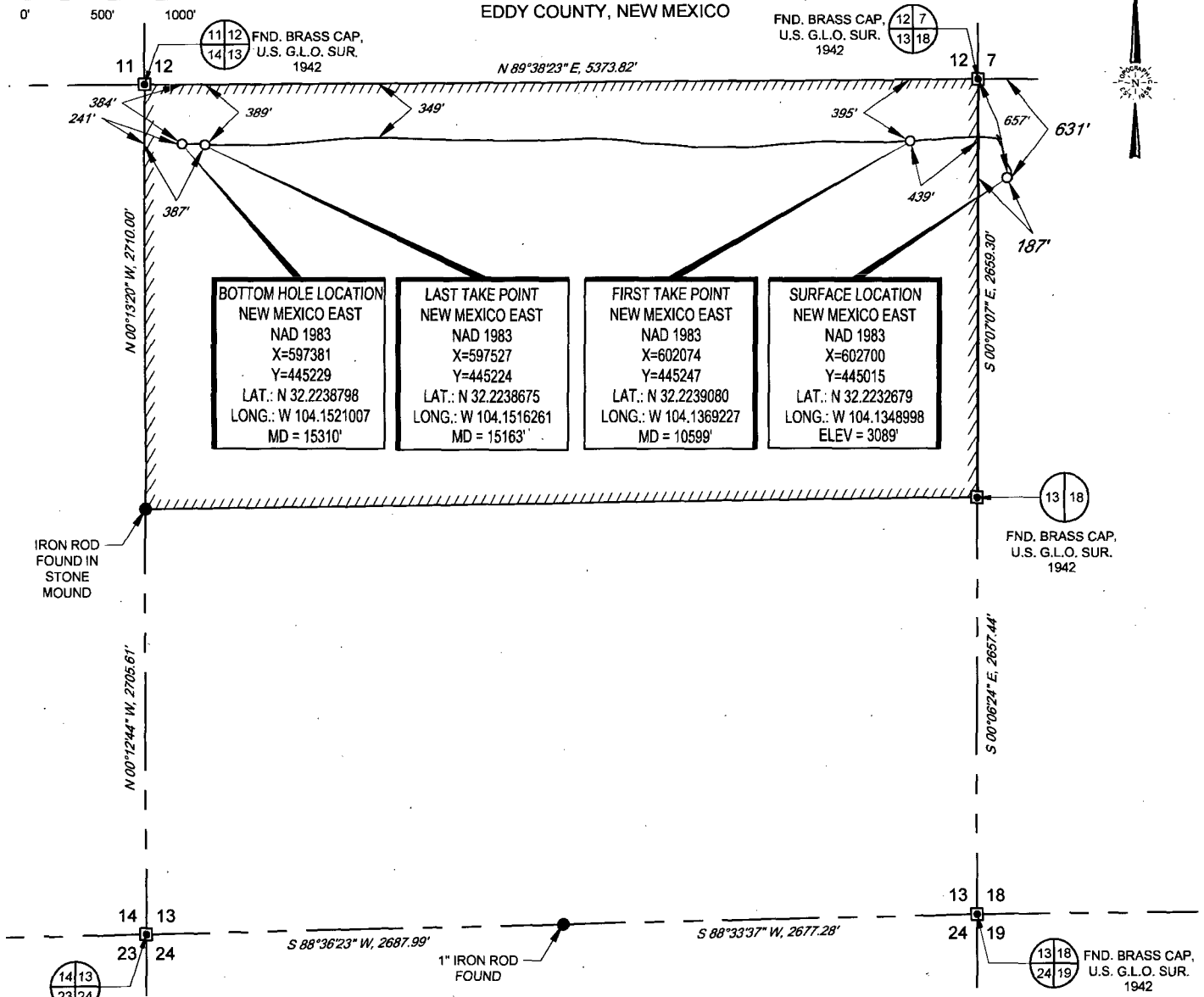
I hereby certify that the well location shown on this plat was plotted from field notes of actual surveys made by me or under my supervision, and that the same is true to the best of my belief.

04/21/2017  
Date of Survey  
Signature and Seal of Professional Surveyor  
MICHAEL BROWN  
NEW MEXICO  
18329  
PROFESSIONAL SURVEYOR

Certificate Number

SCALE: 1" = 1000'

SECTION 18, TOWNSHIP 24-S, RANGE 28-E, N.M.P.M.  
EDDY COUNTY, NEW MEXICO



**BOTTOM HOLE LOCATION**  
NEW MEXICO EAST  
NAD 1983  
X=597381  
Y=445229  
LAT.: N 32.2238798  
LONG.: W 104.1521007  
MD = 15310'

**LAST TAKE POINT**  
NEW MEXICO EAST  
NAD 1983  
X=597527  
Y=445224  
LAT.: N 32.2238675  
LONG.: W 104.1516261  
MD = 15163'

**FIRST TAKE POINT**  
NEW MEXICO EAST  
NAD 1983  
X=602074  
Y=445247  
LAT.: N 32.2239080  
LONG.: W 104.1369227  
MD = 10599'

**SURFACE LOCATION**  
NEW MEXICO EAST  
NAD 1983  
X=602700  
Y=445015  
LAT.: N 32.2232679  
LONG.: W 104.1348998  
ELEV = 3089'

LEASE NAME & WELL NO.: BRANTLEY STATE COM 13-24S-27E RB #221H  
SECTION 18 TWP 24-S RGE 28-E SURVEY N.M.P.M.  
COUNTY EDDY STATE NM ELEVATION 3089'  
DESCRIPTION 631' FNL & 187' FWL



**TOPOGRAPHIC**  
LOYALTY INNOVATION LEGACY

1400 EVERMAN PARKWAY, Ste. 187 • FT. WORTH, TEXAS 76140  
TELEPHONE: (817) 744-7512 • FAX: (817) 744-7548  
2803 NORTH BIG SPRING • MIDLAND, TEXAS 79705  
TELEPHONE: (432) 682-1653 OR (800) 767-1653 • FAX: (432) 682-1743  
WWW.TOPOGRAPHIC.COM



Michael Blake Brown, P.S. No. 18329  
APRIL 19, 2017

BRANTLEY STATE COM 13-24S-27E RB #221H AS-COMPLETED	REVISION:	
	INT	DATE
DATE: 04/19/17		
FILE: AD BRANTLEY STATE COM 13-24S-27E RB #221H		
DRAWN BY: GJU		
SHEET: 1 OF 1		

NOTES:

1. ORIGINAL DOCUMENT SIZE: 8.5" X 11"
2. ALL BEARINGS, DISTANCES, AND COORDINATE VALUES CONTAINED HEREIN ARE GRID BASED UPON THE NEW MEXICO STATE PLANE COORDINATE SYSTEM, EAST ZONE, U.S. SURVEY FEET, NORTH AMERICAN DATUM 1983.
3. THIS EASEMENT/SERVITUDE LOCATION SHOWN HEREON HAS BEEN SURVEYED ON THE GROUND UNDER MY SUPERVISION AND PREPARED ACCORDING TO THE EVIDENCE FOUND AT THE TIME OF SURVEY, AND DATA PROVIDED BY MATADOR PRODUCTION COMPANY. THIS CERTIFICATION IS MADE AND LIMITED TO THOSE PERSONS OR ENTITIES SHOWN ON THE FACE OF THIS PLAT AND IS NON-TRANSFERABLE. THIS SURVEY IS CERTIFIED FOR THIS TRANSACTION ONLY.