

2nd copy

Submit 1 Copy To Appropriate District Office  
District I - (575) 393-6161  
1625 N. French Dr., Hobbs, NM 88240  
District II - (575) 748-1283  
811 S. First St., Artesia, NM 88210  
District III - (505) 334-6178  
1000 Rio Brazos Rd., Aztec, NM 87410  
District IV - (505) 476-3460  
1220 S. St. Francis Dr., Santa Fe, NM 87505

State of New Mexico  
Energy, Minerals and Natural Resources

OIL CONSERVATION DIVISION  
1220 South St. Francis Dr.  
Santa Fe, NM 87505

Form C-103  
Revised August 1, 2011

<b>SUNDRY NOTICES AND REPORTS ON WELLS</b> (DO NOT USE THIS FORM FOR PROPOSALS TO DRILL OR TO DEEPEN OR PLUG BACK TO A DIFFERENT RESERVOIR. USE "APPLICATION FOR PERMIT" (FORM C-101) FOR SUCH PROPOSALS.)		WELL API NO. 30-015-37268
1. Type of Well: Oil Well <input type="checkbox"/> Gas Well <input checked="" type="checkbox"/> Other SWD		5. Indicate Type of Lease Federal STATE <input type="checkbox"/> FEE <input type="checkbox"/>
2. Name of Operator COG Operating, LLC		6. State Oil & Gas Lease No.
3. Address of Operator One Concho Center 600 W. Illinois Ave. Midland, TX 79701		7. Lease Name or Unit Agreement Name Loco Hills SWD 35
4. Well Location Unit Letter <u>N</u> : <u>840</u> feet from the <u>South</u> line and <u>2310</u> feet from the <u>West</u> line Section <u>35</u> Township <u>17S</u> Range <u>30E</u> NMPM <u>Eddy</u> County		8. Well Number 2
11. Elevation (Show whether DR, RKB, RT, GR, etc.) 3588'		9. OGRID Number 229137
10. Pool name or Wildcat SWD; Wolfcamp		

12. Check Appropriate Box to Indicate Nature of Notice, Report or Other Data

NOTICE OF INTENTION TO:

PERFORM REMEDIAL WORK ☐ PLUG AND ABANDON ☐  
TEMPORARILY ABANDON ☐ CHANGE PLANS ☐  
PULL OR ALTER CASING ☐ MULTIPLE COMPL ☐  
DOWNHOLE COMMINGLE ☐

SUBSEQUENT REPORT OF:

REMEDIAL WORK ☐ ALTERING CASING ☐  
COMMENCE DRILLING OPNS. ☐ P AND A ☐  
CASING/CEMENT JOB ☐

OTHER: Add Perfs within injection interval ☒

OTHER: ☐

13. Describe proposed or completed operations. (Clearly state all pertinent details, and give pertinent dates, including estimated date of starting any proposed work). SEE RULE 19.15.7.14 NMAC. For Multiple Completions: Attach wellbore diagram of proposed completion or recompletion.

NM OIL CONSERVATION  
ARTESIA DISTRICT

MAY 04 2017

RECEIVED

Please see attached procedure and WBD.

Spud Date: 10/12/09

Rig Release Date: 11/04/09

I hereby certify that the information above is true and complete to the best of my knowledge and belief.

SIGNATURE K C TITLE Lead Regulatory Analyst DATE 02/17/17

Type or print name Kanicia Castillo E-mail address: kcastillo@concho.com PHONE: 432-685-4332  
For State Use Only

APPROVED BY: Richard / NGF TITLE COMPLIANCE OFFICER DATE 5/5/17  
Conditions of Approval (if any):

**Loco Hills SWD 35 #2 – Add Perfs & Acidize (AFE# 00)**  
**840' FSL; 2,310' FWL**  
**Unit N, Sect 35, T17S, R30E, Eddy Co., NM**  
**API# 30-015-37268**  
**SWD - 1177**

#### **Objective**

The Loco Hills SWD 35 #2 is shut in due to an apparent leaking packer or hole in tubing; the casing pressure and tubing pressure are equalized at 1,200 psig. We will move in a workover rig and repair this well to return to injection. As part of this repair, we will also add 71' of new perforations (8,719' to 8,790') within the permitted disposal interval as well as re-perforate the existing perforated interval (8,812' – 8,898'; 9,006' – 9,092').

#### **Well Data**

Injection Formation: Wolfcamp Reef  
Current Injection Interval: 8,812' – 8,898'; 9,006' – 9,092'  
Current Packer Depth: 8,750'  
Interval to be added: 8,719' – 8,790' @ 2 SPF  
Completion Type: Cased hole; perforated  
MD/PBTD: 9,636'  
DV/ECP: 7,220'  
BHT: 140F est.  
Current Status: Active; Injecting

#### **Pipe Data**

##### 7" 26# L80 LTC

Nom ID=6.276"; Drift ID=6.151"; Capacity=0.0382 BPF  
Burst=7,240 psi (5,792 psi @ 80%); Collapse=5,410 psi (4,328 psi @ 80%)

##### 3-1/2" 9.3# J55 IPC

Nom ID=2.992"; Drift ID=2.867"; Capacity=0.00870 BPF  
Burst=6,980 psi (5,584 psi @ 80%); Collapse=7,400 psi (5,920 psi @ 80%); Tensile=142,460 psi  
Annular Capacity 7" x 3-1/2" =0.0264 BPF

##### 2-7/8" 6.5# L-80 (workstring)

Nom ID=2.441"; Drift ID=2.347"; Capacity=0.00579 BPF  
Burst=10,570 psi (8,456 psi @ 80%); Collapse=11,170 psi (8,936 psi @ 80%); Tensile=145,000 psi  
Annular Capacity 7" x 2-7/8" =0.0302 BPF

#### **Cement Data**

##### 9-5/8" 40# J55 LTC @ 4,038'

1<sup>st</sup>: 1500sx Halliburton Lt @ 12.9 ppg, 1.88 yield + 300sx Premium Plus @ 14.8 ppg, 1.33 yield (circ 157sx)

##### 7" 26# L80 LTC @ 9,685' - (DV/ECP @ 7,220')

1<sup>st</sup>: 500sx 50/50 poz @ 14.2 ppg, 1.34 yield (circ 42sx)

2<sup>nd</sup>: 650sx @ 12.4 ppg, 2.14 yield + 100sx @ 15.6 ppg, 1.19 yield (circ 66sx)

#### **Contacts**

NMOCD – 575.626.0831 – Richard Inge  
Injection Tubing: Composite Lining Systems (CLS) - 432.617.0242  
Injection Packer Equipment: Terrant Co. – 575.513.3300 – Rickey De La Rosa  
Acid Stimulation: Elite – 575.513.9607 – Mike Brown  
Packer Fluid: Catalyst - 575.390.7782 – Kenny Kearney  
Wellhead: Downing - 432.889.6623 – Randy Carter  
Wireline: Capitan – 575.390.3350 – Jackie Wilson

## Procedure

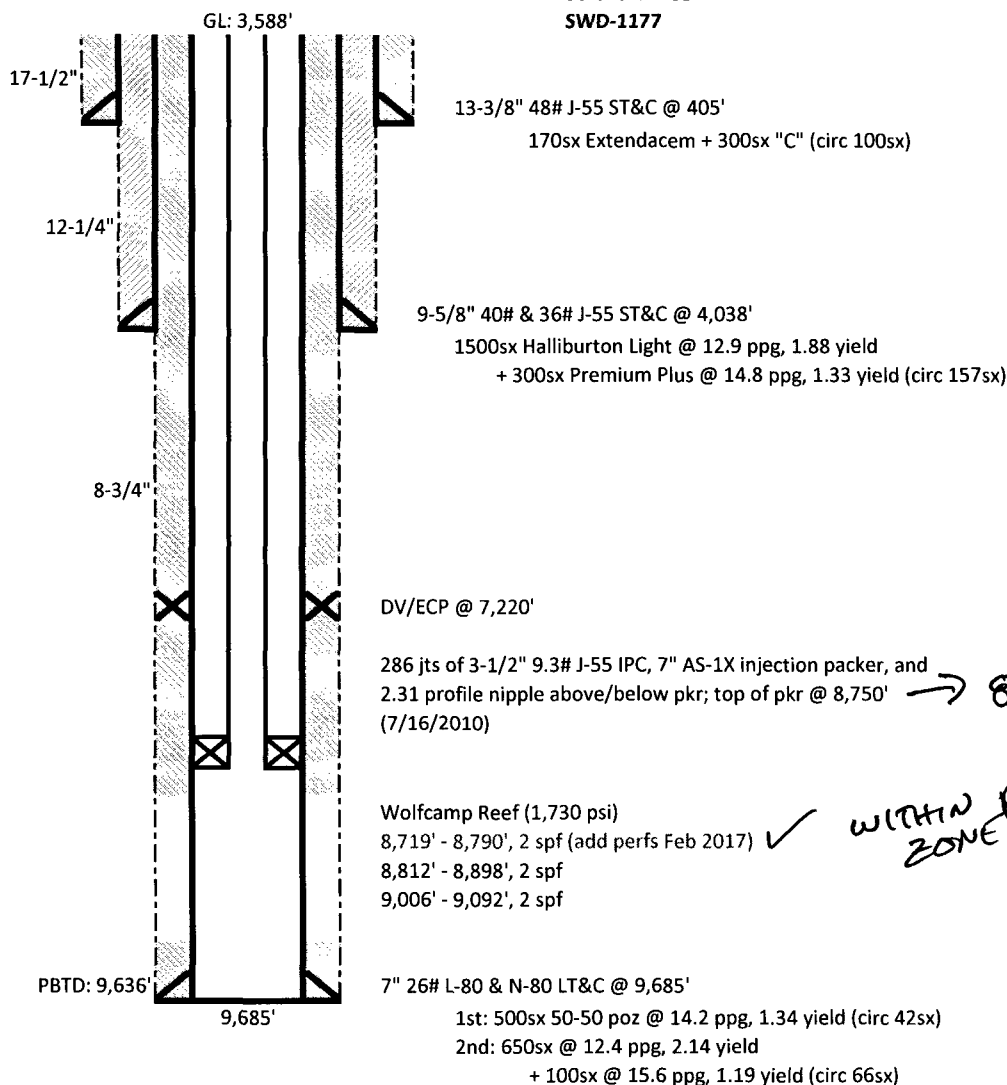
- Notify OCD of intent to start work 24 hours prior to rig up.
- Set three unlined frac tanks and one lined acid frac tank, and MIRU WSU.
- Schedule pipe racks and 2-7/8" 6.5# L-80 workstring.
- Verify wellhead is isolated from injection line.
- Calculated kill mud weight is 12.12 ppg based on the estimated current fluid column weight of 9.5 ppg and a SITP of 1,200 psig. Tubing volume is 76 bbls to packer and annular volume is 233 bbls to top perf; **order 300 bbl of 13 ppg.**
- Pump mud to kill the well and ND wellhead. NU 7-1/16" hydraulic BOP with 3-1/2" pipe rams and blind rams.
- TOH standing back 3-1/2" IPC injection tubing. Inspect tubing threads for any sign of corrosion.
- Inspect packer for holmising elements and send BHA to Terrant Co. for re-dress. Pick up the spare 7" injection packer assembly in Terrant Co. shop; **this application will need to be modified to lubricate packer in hole via wireline.** Please include a new 2-7/8" pump out plug with this assembly.
- RU wireline lubricator and RIH with 4" casing guns and perforate according to the perf schedule below. We will re-perforate the existing perforated interval as well as add 71' of new perforations:

- Perf Schedule

- Net Perf Interval: 243' @ 2 spf = 486 shots
  - 8,719' - 8,790' – new perforations @ 2 spf (142 shots)
  - 8,812' - 8,898' – existing perforated interval @ 2 spf (172 shots)
  - 9,006' - 9,092' – existing perforated interval @ 2 spf (172 shots)
- POH with casing guns and PU 7" injection packer assembly (with pump off plug) on wireline; please limit speed RIH as not to rupture the plug. Lubricate packer in the hole and set at 8,690'; verify packer is set and formation pressure is isolated. POH with wireline and RIH with 2-7/8" L-80 workstring.
  - Latch on to OOT and pressure up annulus to 1,000 psi; we will hold this pressure on the backside throughout the entire job. Please make sure we hook up a pressure transmitter on the annulus to monitor backside pressure.
  - Acidize Wolfcamp Reef formation from 8,719' to 9,092' with 40,000 gal NE Fe 15% HCl acid (double inhibited) at 6-8 BPM dropping 15,000# rock salt diverter broken up into 3 stages @ 5,000#/stage. We will need 400 bbl of 10 ppg brine to carry the rock salt.
  - Limit treating pressure to 6,000 psi and hold 1,000 psi on the annulus. Flush acid with one frac tank of fresh water to ensure we dissolve the salt blocker. Shut well in for a couple hours and let acid soak on formation.
  - RIH with slickline and set a blanking plug in the profile nipple to isolate formation pressure. Verify pressure isolation; get off OOT and TOH laying down workstring.
  - RIH with 3-1/2" IPC injection tubing hydrotesting below the slips. Replace any joints with corroded pin ends. Latch on to OOT and unseat packer.
  - Space out and set packer at 8,690' with 20 pts compression. Get off on/off tool and reverse circulate annulus with approximately 230 bbls fresh water packer fluid containing corrosion inhibitor/biocide/oxygen scavenger.
  - Latch onto on/off tool and plumb in wellhead. Top off annulus with packer fluid if necessary.
  - Give NMOCD Artesia 24 hours notice for MIT. RU pump truck and test tubing x casing annulus to 500 psi for 30 minutes. Send MIT chart to Susan Lopez.
  - RU slickline and retrieve blanking plug.
  - Contact SWD Operations to put well in service.
  - All costs should be charged to the expense workover AFE.

OCD KEEPS CHART AND SCANS IT INTO WELLFILE. IF WITNESSED BY RICHARD

Loco Hills SWD 35 #2  
 840' FSL; 2,310' FWL  
 N, 35, T17S, R30E, Eddy Co., NM  
 30-015-37268  
 SWD-1177



JH - 2/13/2017

#### Well History:

10/12/2009 SPUD  
 12/5/2009 Frac job  
 12/24/2009 Initial tubing/pkr install & MIT  
 7/7/2010 Tag fill @ 9,362' (recovered iron scale in sample catcher); did not clean out.  
 7/13/2010 Pumped 6,000 gal 15% HCl; TOH  
 7/15/2010 Acid via 7" casing; 108,654 gal 15% HCl + 61,922 gal 10# gel + 30,000# rock salt  
 7/16/2010 RIH with 3-1/2" IPC and 7" AS-1X injection pkr (J-55 tubing)  
 11/10/2014 4,500 gal 15% HCl acid job  
 3/31/2015 Slickline tagged fill @ 9,340'  
 Add upper perfs and re-perf existing intervals; acidize; SRT