

District I
1625 N. French Dr., Hobbs, NM 88240
Phone: (575) 393-6161 Fax: (575) 393-0720
District II
811 S. First St., Artesia, NM 88210
Phone: (575) 748-1283 Fax: (575) 748-9720
District III
1000 Rio Brazos Road, Aztec, NM 87410
Phone: (505) 334-6178 Fax: (505) 334-6170
District IV
1220 S. St. Francis Dr., Santa Fe, NM 87505
Phone: (505) 476-3460 Fax: (505) 476-3462

State of New Mexico **OIL CONSERVATION**
Energy, Minerals & Natural Resources
Department
OIL CONSERVATION DIVISION
1220 South St. Francis Dr.
Santa Fe, NM 87505

FORM C-102

Revised August 1, 2011

Submit one copy to appropriate

District Office

☐ AMENDED REPORT

WELL LOCATION AND ACREAGE DEDICATION PLAT

¹ API Number 30-015-43958	² Pool Code 99820	³ Pool Name PURPLE SAGE;WOLFCAMP (GAS)
⁴ Property Code 315284	⁵ Property Name JIMMY KONE 05-24S-28E RB	
⁷ OGRI No. 228937	⁸ Operator Name MATADOR PRODUCTION COMPANY	⁶ Well Number #226H
		⁹ Elevation 3043'

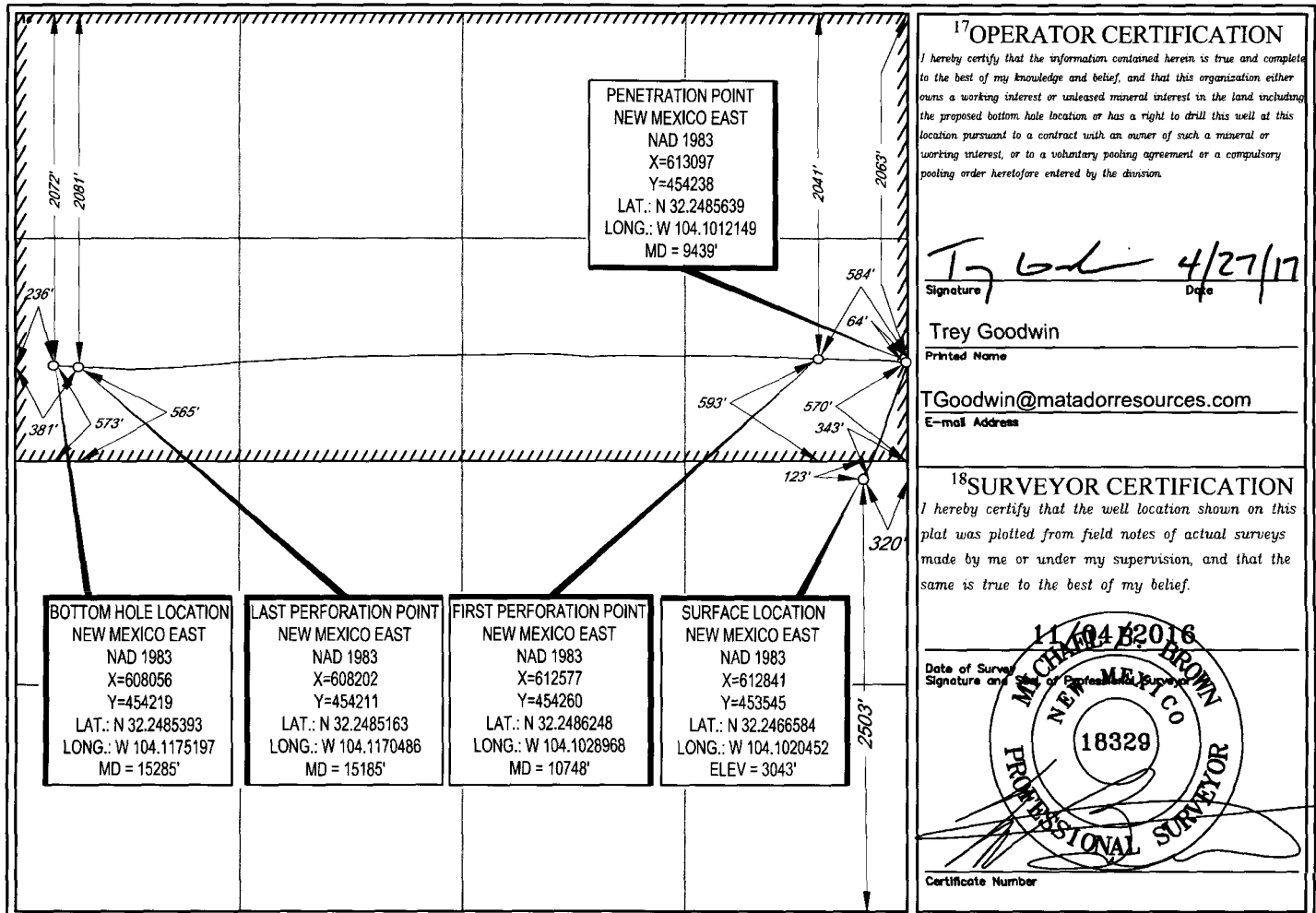
¹⁰Surface Location

UL or lot no.	Section	Township	Range	Lot Idn	Feet from the	North/South line	Feet from the	East/West line	County
I	5	24-S	28-E	-	2503'	SOUTH	320'	EAST	EDDY

UL or lot no.	Section	Township	Range	Lot Idn	Feet from the	North/South line	Feet from the	East/West line	County
E	5	24-S	28-E	-	2072'	NORTH	236'	WEST	EDDY

¹² Dedicated Acres 320	¹³ Joint or Infill	¹⁴ Consolidation Code	¹⁵ Order No.
--------------------------------------	-------------------------------	----------------------------------	-------------------------

No allowable will be assigned to this completion until all interests have been consolidated or a non-standard unit has been approved by the division.



¹⁷OPERATOR CERTIFICATION

I hereby certify that the information contained herein is true and complete to the best of my knowledge and belief, and that this organization either owns a working interest or unleased mineral interest in the land including the proposed bottom hole location or has a right to drill this well at this location pursuant to a contract with an owner of such a mineral or working interest, or to a voluntary pooling agreement or a compulsory pooling order heretofore entered by the division.

Trey Goodwin 4/27/17
Signature Date

Trey Goodwin

Printed Name

TGoodwin@matadorresources.com

E-mail Address

¹⁸SURVEYOR CERTIFICATION

I hereby certify that the well location shown on this plat was plotted from field notes of actual surveys made by me or under my supervision, and that the same is true to the best of my belief.

11/04/2016
Date of Survey

Signature and Seal of Professional Surveyor

18329

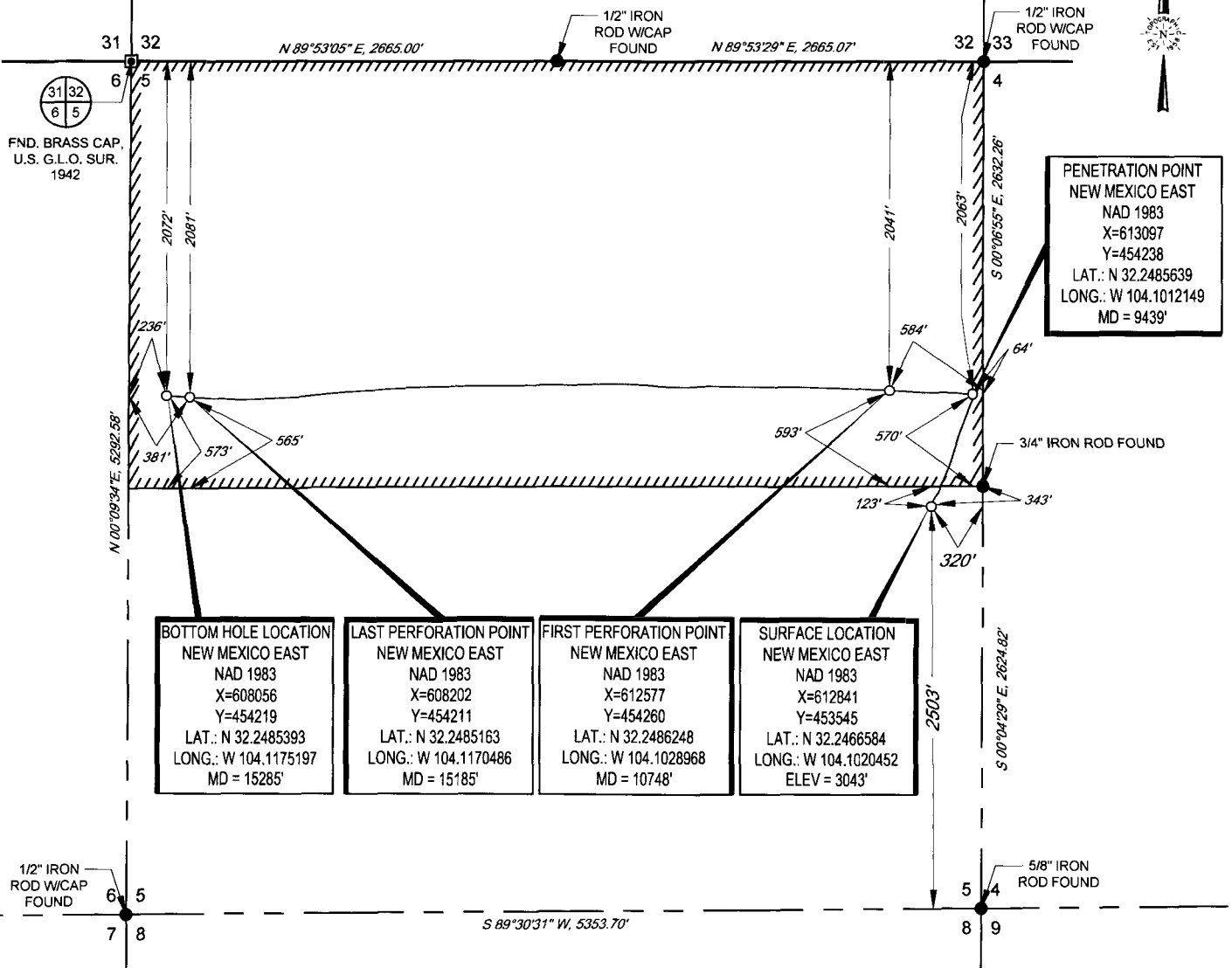
PROFESSIONAL SURVEYOR

Certificate Number

SCALE: 1" = 1000'

0' 500' 1000'

SECTION 5, TOWNSHIP 24-S, RANGE 28-E, N.M.P.M.
EDDY COUNTY, NEW MEXICO



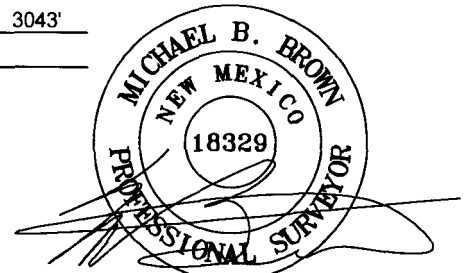
BOTTOM HOLE LOCATION NEW MEXICO EAST NAD 1983 X=608056 Y=454219 LAT.: N 32.2485393 LONG.: W 104.1175197 MD = 15285'	LAST PERFORATION POINT NEW MEXICO EAST NAD 1983 X=608202 Y=454211 LAT.: N 32.2485163 LONG.: W 104.1170486 MD = 15185'	FIRST PERFORATION POINT NEW MEXICO EAST NAD 1983 X=612577 Y=454260 LAT.: N 32.2486248 LONG.: W 104.1028968 MD = 10748'	SURFACE LOCATION NEW MEXICO EAST NAD 1983 X=612841 Y=453545 LAT.: N 32.2466584 LONG.: W 104.1020452 ELEV = 3043'
--	--	---	---

LEASE NAME & WELL NO.: JIMMY KONE 05-24S-28E RB #226H
SECTION 05 TWP 24-S RGE 28-E SURVEY N.M.P.M.
COUNTY EDDY STATE NM ELEVATION 3043'
DESCRIPTION 2503' FSL & 320' FEL



TOPOGRAPHIC
LOYALTY INNOVATION LEGACY

1400 EVERMAN PARKWAY, Ste. 197 • FT. WORTH, TEXAS 76140
TELEPHONE: (817) 744-7512 • FAX (817) 744-7548
2903 NORTH BIG SPRING • MIDLAND, TEXAS 79705
TELEPHONE: (432) 682-1653 OR (800) 767-1653 • FAX (432) 682-1743
WWW.TOPOGRAPHIC.COM



Michael Blake Brown, P.S. No. 18329
APRIL 24, 2017

JIMMY KONE 05-24S-28E RB #226H AS-COMPLETED	REVISION:		NOTES:
	INT	DATE	
DATE: 04/24/17			<p>1. ORIGINAL DOCUMENT SIZE: 8.5" X 11"</p> <p>2. ALL BEARINGS, DISTANCES, AND COORDINATE VALUES CONTAINED HEREIN ARE GRID BASED UPON THE NEW MEXICO STATE PLANE COORDINATE SYSTEM, EAST ZONE, U.S. SURVEY FEET, NORTH AMERICAN DATUM 1983.</p> <p>3. THIS EASEMENT/SERVITUDE LOCATION SHOWN HEREON HAS BEEN SURVEYED ON THE GROUND UNDER MY SUPERVISION AND PREPARED ACCORDING TO THE EVIDENCE FOUND AT THE TIME OF SURVEY, AND DATA PROVIDED BY MATADOR PRODUCTION COMPANY. THIS CERTIFICATION IS MADE AND LIMITED TO THOSE PERSONS OR ENTITIES SHOWN ON THE FACE OF THIS PLAT AND IS NON-TRANSFERABLE. THIS SURVEY IS CERTIFIED FOR THIS TRANSACTION ONLY.</p>
FILE: AD_JIMMY_KONE_05-24S-28E_RB_226H			
DRAWN BY: GJU			
SHEET: 1 OF 1			