

NEW MEXICO OIL CONSERVATION ARTESIA DISTRICT

District I
1625 N. French Dr., Hobbs, NM 88240

District II
1301 W. Grand Avenue, Artesia, NM 88210

District III
1000 Rio Brazos Rd., Aztec, NM 87410

District IV
1220 S. St. Francis Dr., Santa Fe, NM 87505

State of New Mexico
Energy, Minerals & Natural Resources Department
OIL CONSERVATION DIVISION
1220 South St. Francis Dr.
Santa Fe, NM 87505

APR 27 2017 Form C-102
Revised October 15, 2009
Submit one copy to appropriate District Office
☒ AMENDED REPORT

WELL LOCATION AND ACREAGE DEDICATION PLAT

API Number 30-015-40501	Pool Code 98199	Pool Name Parkway; Bone Spring, West
Property Code 38434	Property Name TURQUOISE PWU 27	
Well Number 3H		Elevation 3312.3
OGRID No. 6137	Operator Name DEVON ENERGY PRODUCTION COMPANY, L.P.	

10 Surface Location

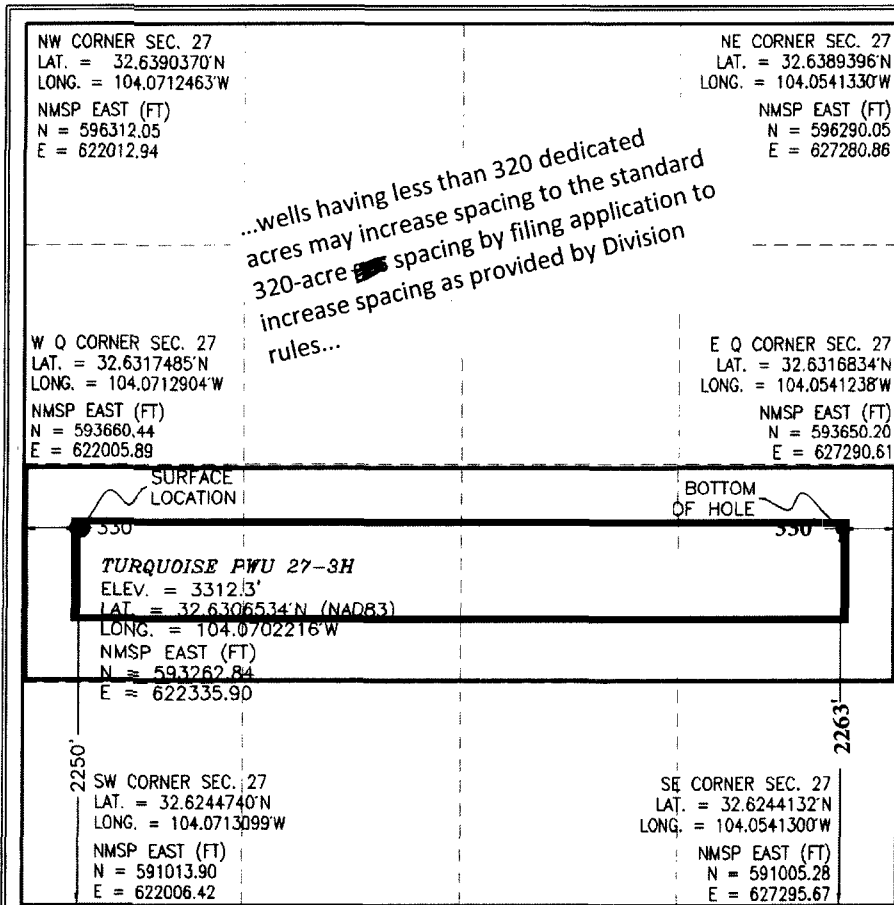
UL or lot no.	Section	Township	Range	Lot Idn	Feet from the	North/South line	Feet from the	East/West line	County
L	27	19 S	29 E		2250	SOUTH	330	WEST	EDDY

11 Bottom Hole Location If Different From Surface

UL or lot no.	Section	Township	Range	Lot Idn	Feet from the	North/South line	Feet from the	East/West line	County
I	27	19 S	29 E		2263	SOUTH	330	EAST	EDDY

12 Dedicated Acres 160	13 Joint or Infill	14 Consolidation Code	15 Order No. R-14188
----------------------------------	--------------------	-----------------------	--------------------------------

No allowable will be assigned to this completion until all interests have been consolidated or a non-standard unit has been approved by the division.



17 OPERATOR CERTIFICATION

I hereby certify that the information contained herein is true and complete to the best of my knowledge and belief, and that this organization either owns a working interest or unleased mineral interest in the land including the proposed bottom hole location or has a right to drill this well at this location pursuant to a contract with an owner of such a mineral or working interest, or to a voluntary pooling agreement or a compulsory pooling order heretofore entered by the division

erin.workman@dvn.com

03/14/17

Printed Name

Erin Workman

18 SURVEYOR CERTIFICATION

I hereby certify that the well location shown on this plat was plotted from field notes of actual surveys made by me or under my supervision, and that the same is true and correct to the best of my belief.

FEBRUARY 23, 2012

Date of Survey

Signature and Seal of Professional Surveyor:

Certificate Number: FILLMON F. JARAMILLO, PLS 12797

SURVEY NO. 793

Project Area: _____

Producing Area: _____