

District I  
1625 N. French Dr., Hobbs, NM 88240  
Phone: (575) 393-6161 Fax: (575) 393-0720  
District II  
811 S. First St., Artesia, NM 88210  
Phone: (575) 748-1283 Fax: (575) 748-9720  
District III  
1000 Rio Brazos Road, Aztec, NM 87410  
Phone: (505) 334-6178 Fax: (505) 334-6170  
District IV  
1220 S. St. Francis Dr., Santa Fe, NM 87505  
Phone: (505) 476-3460 Fax: (505) 476-3462

State of New Mexico  
Energy, Minerals & Natural Resources Department  
OIL CONSERVATION DIVISION  
1220 South St. Francis Dr.  
Santa Fe, NM 87505

OIL CONSERVATION

ARTESIA DISTRICT

Form C-102

APR 27 2017

Revised August 1, 2011

Submit one copy to appropriate  
District Office

☒ AMENDED REPORT

WELL LOCATION AND ACREAGE DEDICATION PLAT

<sup>1</sup> API Number <b>30-015-41014</b>	<sup>2</sup> Pool Code <b>98199</b>	<sup>3</sup> Pool Name <b>PARKWAY; BONE SPRING, WEST</b>
<sup>4</sup> Property Code <b>38433</b>	<sup>5</sup> Property Name <b>DIAMOND PWU 22</b>	<sup>6</sup> Well Number <b>8H</b>
<sup>7</sup> OGRID No. <b>6137</b>	<sup>8</sup> Operator Name <b>DEVON ENERGY PRODUCTION COMPANY, L.P.</b>	<sup>9</sup> Elevation <b>3339.8</b>

<sup>10</sup> Surface Location

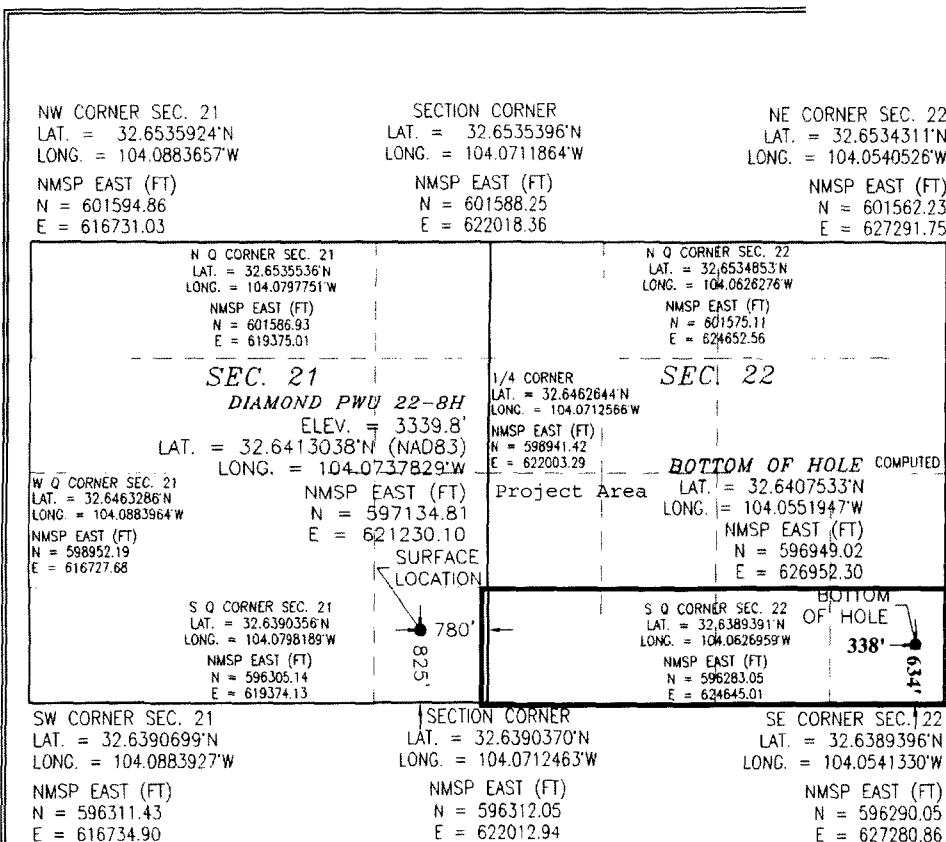
UL or lot no.	Section	Township	Range	Lot Idn	Feet from the	North/South line	Feet from the	East/West line	County
<b>P</b>	<b>21</b>	<b>19 S</b>	<b>29 E</b>		<b>825</b>	<b>SOUTH</b>	<b>780</b>	<b>EAST</b>	<b>EDDY</b>

<sup>11</sup> Bottom Hole Location If Different From Surface

UL or lot no.	Section	Township	Range	Lot Idn	Feet from the	North/South line	Feet from the	East/West line	County
<b>P</b>	<b>22</b>	<b>19 S</b>	<b>29 E</b>		<b>634</b>	<b>SOUTH</b>	<b>338</b>	<b>EAST</b>	<b>EDDY</b>

<sup>12</sup> Dedicated Acres <b>160</b>	<sup>13</sup> Joint or Infill	<sup>14</sup> Consolidation Code	<sup>15</sup> Order No. <b>R-14188</b>	<sup>16</sup> Wells having less than 320 dedicated acres may increase spacing to the standard 320-acre spacing by filing application to increase spacing as provided by Division rules...
---	-------------------------------	----------------------------------	---	---

No allowable will be assigned to this completion until all interests have been divided by the division.



<sup>17</sup> OPERATOR CERTIFICATION

I hereby certify that the information contained herein is true and complete to the best of my knowledge and belief, and that this organization either owns a working interest or unleased mineral interest in the land including the proposed bottom hole location or has a right to drill this well at this location pursuant to a contract with an owner of such a mineral or working interest, or to a voluntary pooling agreement or a compulsory pooling order heretofore entered by the division.

*Erin Workman* 03/14/2017  
Signature Date

**Erin Workman**  
Printed Name

**Erin.workman@dmv.com**  
E-mail Address

**Erin.workman@dmv.com**  
E-mail Address

**Erin.workman@dmv.com**  
E-mail Address

<sup>18</sup> SURVEYOR CERTIFICATION

I hereby certify that the well location shown on this plat was plotted from field notes of actual surveys made by me or under my supervision, and that the same is true and correct to the best of my belief.

SEPTEMBER 2017  
Date of Survey

*Frank J. Aramillo*  
Signature and Seal of Professional Surveyor

**FRANK J. ARAMILLO, PLS 12797**  
Certificate Number

SURVEY NO. 1241