

District I
1625 N. French Dr., Hobbs, NM 88240
Phone: (505) 393-6161 Fax: (505) 393-0720
District II
811 S. First St., Artesia, NM 88210
Phone: (505) 748-1283 Fax: (505) 748-9720
District III
1000 Rio Brazos Road, Aztec, NM 87410
Phone: (505) 334-6178 Fax: (505) 334-6170
District IV
1220 S. St. Francis Dr., Santa Fe, NM 87505
Phone: (505) 476-3460 Fax: (505) 476-3462

State of New Mexico
Energy, Minerals & Natural Resources Department
OIL CONSERVATION DIVISION
1220 South St. Francis Dr.
Santa Fe, NM 87505

APR 27 2017

Form C-102

Revised August 1, 2011

Submit one copy to appropriate
District Office

☒ AMENDED REPORT

WELL LOCATION AND ACREAGE DEDICATION PLAT

¹ API Number 30-015-42809	² Pool Code 98199	³ Pool Name PARKWAY; BONE SPRING, WEST
⁴ Property Code 38433	⁵ Property Name DIAMOND PWU 22	⁶ Well Number 11H
⁷ OGRID No. 6137	⁸ Operator Name DEVON ENERGY PRODUCTION COMPANY, L.P.	⁹ Elevation 3332.1

¹⁰ Surface Location

U.I. or lot no.	Section	Township	Range	Lot Idn	Feet from the	North/South line	Feet from the	East/West line	County
I	21	19 S	29 E		2295	SOUTH	170	EAST	EDDY

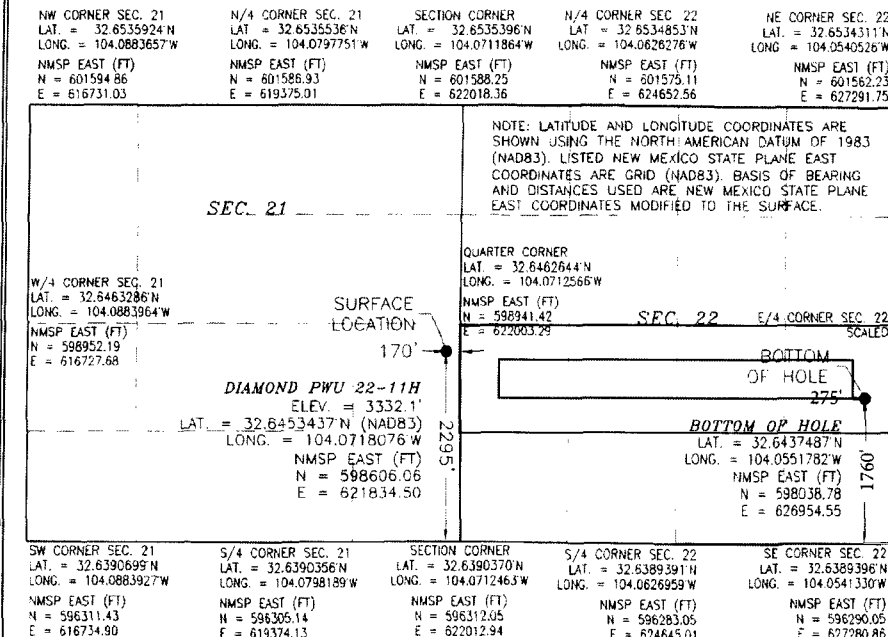
¹¹ Bottom Hole Location If Different From Surface

U.I. or lot no.	Section	Township	Range	Lot Idn	Feet from the	North/South line	Feet from the	East/West line	County
I	22	19 S	29 E		1760	SOUTH	275	EAST	EDDY

¹² Dedicated Acres 160	¹³ Joint or Infill	¹⁴ Consolidation Code	¹⁵ Order No. R-14188
---	-------------------------------	----------------------------------	---

No allowable will be assigned to this completion until all interests have been consolidated or a non-standard unit has been approved by the division.

...wells having less than 320 dedicated
acres may increase spacing to the standard
320-acre spacing by filing application to
increase spacing as provided by Division
rules...

¹⁷ OPERATOR CERTIFICATION

I hereby certify that the information contained herein is true and complete to the best of my knowledge and belief, and that this organization either owns a working interest or unleased mineral interest in the land including the proposed bottom hole location or has a right to drill this well at this location pursuant to a contract with an owner of such a mineral or working interest, or to a voluntary pooling agreement or a compulsory pooling order heretofore covered by the division

Erin Workman 03/14/2017
Signature Date

Erin Workman

Printed Name

Erin.workman@dm.com

E-mail Address

¹⁸ SURVEYOR CERTIFICATION

I hereby certify that the well location shown on this plat was plotted from field notes of actual surveys made by me or under my supervision, and that the same is true and correct to the best of my belief.

OCTOBER 16, 2014

Date of Survey (T)

Erin Workman
Signature and Seal of Professional Surveyor

Certificate Number: ELMON F. JARAMILLO, PLS 12797

SURVEY NO. 3413

PP: 195' FEL & 2335' FSL, Sec 21, T19S, R29E

Project Area:

Producing Area: