

DISTRICT I
1625 N. French Dr., Hobbs, NM 88240
Phone (505) 395-6181 Fax: (505) 395-0720

DISTRICT II
811 S. First St., Artesia, NM 88210
Phone (505) 748-1283 Fax: (505) 748-0720

DISTRICT III
1000 Rio Brazos Rd., Aztec, NM 87410
Phone (505) 334-6178 Fax: (505) 334-6170

DISTRICT IV
1226 S. St. Francis Dr., Santa Fe, NM 87505
Phone (505) 476-3460 Fax: (505) 476-3468

NEW MEXICO OIL CONSERVATION
State of New Mexico ARTESIA DISTRICT
Energy, Minerals and Natural Resources Department

Form C-102
Revised August 1, 2011
Submit one copy to appropriate District Office

OIL CONSERVATION DIVISION

1226 South St. Francis Dr.
Santa Fe, New Mexico 87505

MAY 25 2017

RECEIVED

WELL LOCATION AND ACREAGE DEDICATION PLAT

☐ AMENDED REPORT

API Number 30-015-44206	Pool Code 49553	Pool Name PALMILLO; BONE SPRING, EAST
Property Code 22952 317735	Property Name NEPTUNE 30 FEDERAL COM	Well Number 4H
OGRIID No. 15742	Operator Name NEARBURG PRODUCING COMPANY	Elevation 3478'

Surface Location

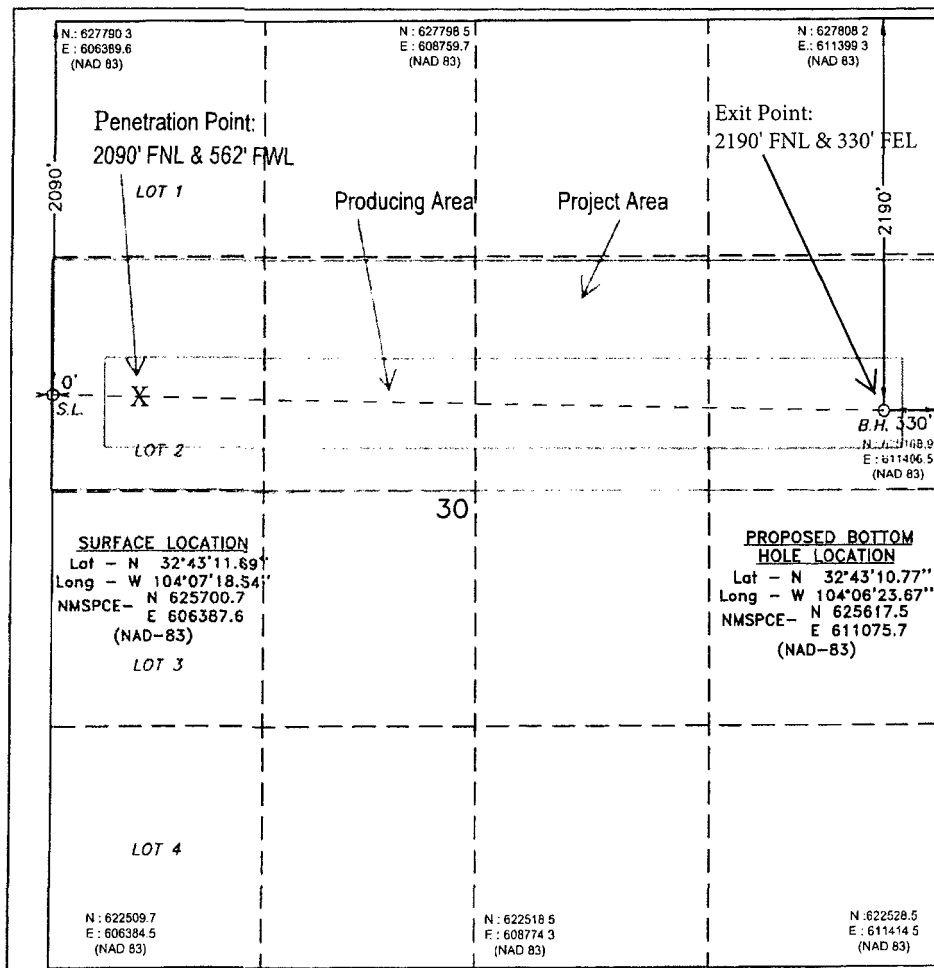
UL or lot No.	Section	Township	Range	Lot Idn	FEET from the	North/South line	FEET from the	East/West line	County
LOT 2	30	18 S	29 E		2090	NORTH	0	WEST	EDDY

Bottom Hole Location If Different From Surface

UL or lot No.	Section	Township	Range	Lot Idn	FEET from the	North/South line	FEET from the	East/West line	County
H	30	18 S	29 E		2190	NORTH	330	EAST	EDDY

Dedicated Acres	Joint or Infill	Consolidation Code	Order No.
152.07			

NO ALLOWABLE WILL BE ASSIGNED TO THIS COMPLETION UNTIL ALL INTERESTS HAVE BEEN CONSOLIDATED OR A NON-STANDARD UNIT HAS BEEN APPROVED BY THE DIVISION



OPERATOR CERTIFICATION

I hereby certify that the information contained herein is true and complete to the best of my knowledge and belief, and that this organization either owns a working interest or unleased mineral interest in the land including the proposed bottom hole location or has a right to drill this well at this location pursuant to a contract with an owner of such a mineral or working interest, or to a voluntary pooling agreement or a compulsory pooling order heretofore entered by the division.

Tim Green 12-21-16
Signature Date

Tim Green
Printed Name
tgreen@nearburg.com
Email Address

SURVEYOR CERTIFICATION

I hereby certify that the well location shown on this plat was plotted from field notes of actual surveys made by me or under my supervision, and that the same is true and correct to the best of my belief.

Date Surveyed
Signature of Professional Surveyor

Certified by Cory L. Woopes 7977
BASIC SURVEYS

0' 500' 1000' 1500' 2000'
SCALE: 1" = 1000'
WO Num.: 32297