

District I
1625 N. French Dr., Hobbs, NM 88240
Phone: (575) 393-6161 Fax: (575) 393-0720
District II
811 S. First St., Artesia, NM 88210
Phone: (575) 748-1283 Fax: (575) 748-9720
District III
1000 Rio Brazos Road, Aztec, NM 87410
Phone: (505) 334-6178 Fax: (505) 334-6170
District IV
1220 S. St. Francis Dr., Santa Fe, NM 87505
Phone: (505) 476-3460 Fax: (505) 476-3462

State of New Mexico
Energy, Minerals & Natural Resources Department
OIL CONSERVATION DIVISION
1220 South St. Francis Dr.
Santa Fe, NM 87505

Form C-102
Revised August 1, 2011
Submit one copy to appropriate
District Office

☐ AMENDED REPORT

WELL LOCATION AND ACREAGE DEDICATION PLAT

¹ API Number 30-015-44165	² Pool Code 98220	³ Pool Name PURPLE SAGE; WOLFCAMP (GAS)
⁴ Property Code 317740	⁵ Property Name EL PRESIDENTE STATE X	⁶ Well Number 4H
⁷ GRID No. 160825	⁸ Operator Name B.C. OPERATING, INC.	⁹ Elevation 3140'

¹⁰ Surface Location									
UL or lot no.	Section	Township	Range	Lot Idn	Feet from the	North/South line	Feet from the	East/West line	County
0	2	T24S	R27E		330'	SOUTH	2310'	EAST	EDDY

¹¹ Bottom Hole Location If Different From Surface									
UL or lot no.	Section	Township	Range	Lot Idn	Feet from the	North/South line	Feet from the	East/West line	County
2	2	T24S	R27E		240'	NORTH	2310'	EAST	EDDY

¹² Dedicated Acres	¹³ Joint or Infill	¹⁴ Consolidation Code	¹⁵ Order No.
320.68			

No allowable will be assigned to this completion until all interests have been consolidated or a non-standard unit has been approved by the division.

<p>¹⁶</p> <p>SECTION 34 T-23-S</p> <p>SECTION 3 T-24-S</p> <p>BOTTOM HOLE LOCATION 240' FNL 2310' FEL NAD 83, SPCS NM EAST Y:453978.53' / X:594918.17' LAT:32.25344143N / LON:104.16000745W NAD 87, SPCS NM EAST Y:453980.03' / X:593735.44' LAT:32.25332154N / LON:104.15951076W</p> <p>LAST TAKE POINT 330' FNL 2310' FEL NAD 83, SPCS NM EAST Y:453886.51' / X:594916.35' LAT:32.25319400N / LON:104.16001382W NAD 87, SPCS NM EAST Y:453830.01' / X:593733.62' LAT:32.25307411N / LON:104.15951713W</p> <p>SURFACE HOLE LOCATION/FIRST TAKE POINT 330' FSL 2310' FEL NAD 83, SPCS NM EAST Y:453115.98' / X:594820.41' LAT:32.24017425N / LON:104.16034885W NAD 87, SPCS NM EAST Y:4530193.58' / X:593637.59' LAT:32.24005422N / LON:104.15983252W</p> <p>CORNER COORDINATES NAD 83, SPCS NM EAST A - Y: 456216.24' / X: 594592.47' B - Y: 456234.85' / X: 597233.83' C - Y: 450923.92' / X: 597126.31' D - Y: 450806.36' / X: 594475.07'</p> <p>SECTION 3 SECTION 10</p>				<p>SECTION 35</p> <p>SECTION 2 B</p> <p>SECTION 1</p> <p>SECTION 2 C</p> <p>SECTION 11</p> <p>SECTION 12</p>				<p>¹⁷ OPERATOR CERTIFICATION</p> <p>I hereby certify that the information contained herein is true and complete to the best of my knowledge and belief, and that this organization either owns a working interest or unleased mineral interest in the land including the proposed bottom hole location or has a right to drill this well at this location pursuant to a contract with an owner of such a mineral or working interest, or to a voluntary pooling agreement or a compulsory pooling order heretofore entered by the division.</p> <p><i>Sarah Presley</i> 5.11.17 Signature Date</p> <p>SARAH PRESLEY Printed Name</p> <p>SPRESLEY@BCOPERATING.COM E-mail Address</p> <p>¹⁸ SURVEYOR CERTIFICATION</p> <p>I hereby certify that the well location shown on this plat was plotted from field notes of actual surveys made by me or under my supervision, and that the same is true and correct to the best of my belief.</p> <p>MAY 11, 2017 Date of Survey</p> <p><i>Lloyd P. Short</i> Signature and Seal of Professional Surveyor</p> <p>LLOYD P. SHORT 21653 NEW MEXICO PROFESSIONAL SURVEYOR</p> <p>Certificate Number</p>	
---	--	--	--	--	--	--	--	---	--

5-11-17
R.P.

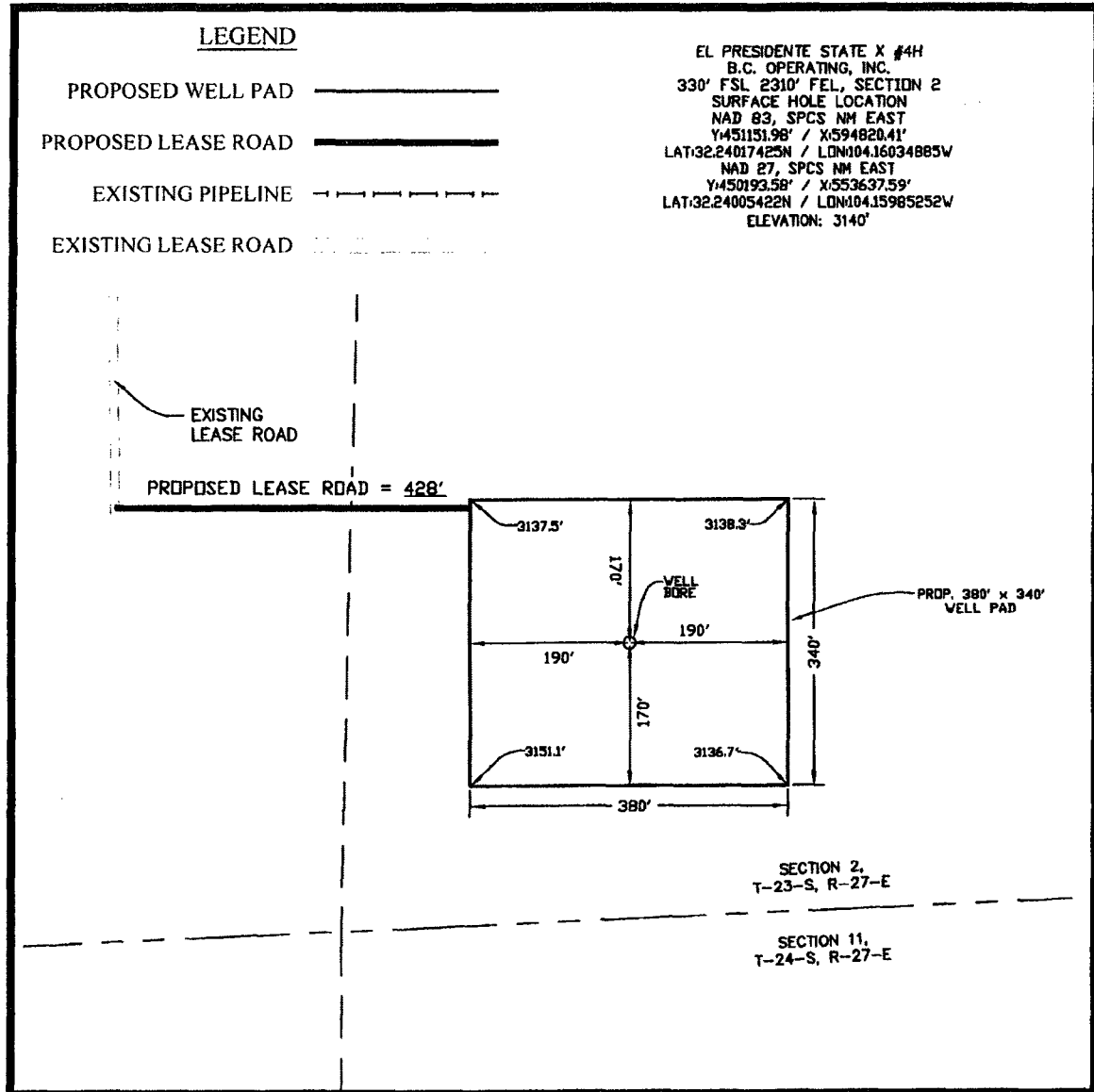
WELL PAD TOPO

SEC. 2 TWP. 24-S RGE. 27-E

SURVEY: N.M.P.M.

COUNTY: EDDY

U.S.G.S. TOPOGRAPHIC MAP: BOND DRAW, N.M.



DIRECTIONS TO LOCATION:

FROM THE INTERSECTION OF U.S. HIGHWAY 62/WEST GREENE STREET AND U.S. 180 W./U.S. 62 W./S. CANAL STREET IN CARLESBAD, NEW MEXICO, TRAVEL SOUTH ON U.S. 180 W./U.S. 62 W./S. CANAL STREET TOWARD W. TANSILL ST. FOR 0.5 MILES TO A SLIGHT RIGHT TURN ONTO SAN JOSE BLVD.. TRAVEL SOUTH ON SAN JOSE BLVD. FOR 2.4 MILES TO U.S. 180 W./U.S. 62 W. ON THE RIGHT. TRAVEL SOUTHWEST ON U.S. 180 W./U.S. 62 W. FOR 2.8 MILES TO WEST DERRICK RD. ON THE LEFT. TRAVEL EAST ON WEST DERRICK RD. FOR 1.8 MILES TO OLD CAVERN HWY. ON THE RIGHT. TRAVEL SOUTH ON OLD CAVERN HWY. FOR 8.0 MILES TO BOUNDS ROAD ON THE LEFT. TRAVEL NORTHEAST ON BOUNDS ROAD FOR 4.1 MILES TO A LEASE ROAD ON THE RIGHT. TRAVEL SOUTHWEST ON LEASE ROAD FOR 1.2 MILES TO A LEASE ROAD ON THE LEFT. TRAVEL SOUTH ON LEASE ROAD FOR 0.8 MILE TO PROPOSED WELL 625 FEET TO THE LEFT.

NOTE:

THIS IS NOT A BOUNDARY SURVEY, APPARENT PROPERTY CORNERS AND PROPERTY LINES ARE SHOWN FOR INFORMATION ONLY. BOUNDARY DATA SHOWN IS FROM STATE OF NEW MEXICO OIL CONSERVATION DIVISION FORM C-102 INCLUDED IN THIS SUBMITTAL.

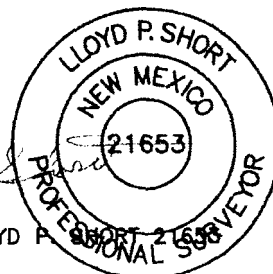
100' 0' 100' 200'

SCALE: 1" = 200'

MAY 11, 2017

Lloyd P. Short

LLOYD P. SHORT



PREPARED BY:
R-SQUARED GLOBAL, LLC
1309 LOUISVILLE AVENUE, MONROE, LA 71201
318-323-6900 OFFICE
JOB No. R3738-01