

DISTRICT I  
1625 N. YRENCH DR., BOBBS, NM 86240  
Phone: (505) 303-0101 Fax: (505) 303-0720

DISTRICT II  
811 S. FIRST ST., ARTESIA, NM 86210  
Phone: (505) 748-1253 Fax: (505) 748-8720

DISTRICT III  
1000 RIO BRAZOS RD., AZTEC, NM 87410  
Phone: (505) 334-8178 Fax: (505) 334-8170

DISTRICT IV  
1220 S. ST. FRANCIS DR., SANTA FE, NM 87505  
Phone: (505) 478-3480 Fax: (505) 478-3482

State of New Mexico  
Energy, Minerals & Natural Resources  
**OIL CONSERVATION DIVISION**  
1220 SOUTH ST. FRANCIS DR.  
Santa Fe, New Mexico 87505

**FORM C-102**  
Revised August 1, 2011  
Submit one copy to appropriate District Office

**RECEIVED**

☐ AMENDED REPORT

**WELL LOCATION AND ACREAGE DEDICATION PLAT**

API Number <b>30-015-44296</b>	Pool Code <b>30216</b>	Pool Name <b>Hay Hollow; Bone Spring, North</b>
Property Code <b>318323</b>	Property Name <b>MYOX 20 FEDERAL COM</b>	Well Number <b>5H</b>
OGRID No. <b>229137</b>	Operator Name <b>COG OPERATING, LLC</b>	Elevation <b>3026.1'</b>

**Surface Location**

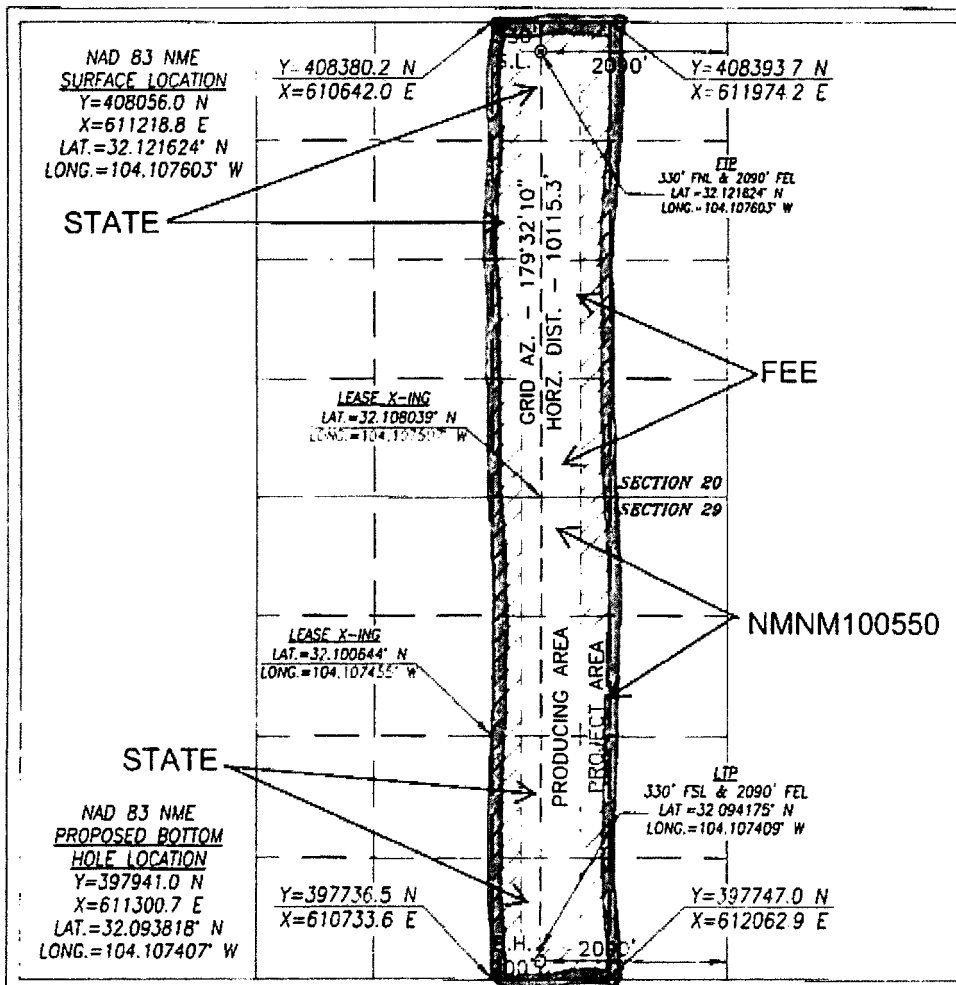
UL or lot No.	Section	Township	Range	Lot Idn	Feet from the	North/South line	Feet from the	East/West line	County
B	20	25-S	28-E		330	NORTH	2090	EAST	EDDY

**Bottom Hole Location If Different From Surface**

UL or lot No.	Section	Township	Range	Lot Idn	Feet from the	North/South line	Feet from the	East/West line	County
0	29	25-S	28-E		200	SOUTH	2090	EAST	EDDY

Dedicated Acres	Joint or Infill	Consolidation Code	Order No.
320			

NO ALLOWABLE WILL BE ASSIGNED TO THIS COMPLETION UNTIL ALL INTERESTS HAVE BEEN CONSOLIDATED  
OR A NON-STANDARD UNIT HAS BEEN APPROVED BY THE DIVISION



**OPERATOR CERTIFICATION**

I hereby certify that the information herein is true and complete to the best of my knowledge and belief, and that this organization either owns a working interest or undivided mineral interest in the land including the proposed bottom hole location or has a right to drill this well at this location pursuant to a contract with an owner of such mineral or working interest, or to a voluntary pooling agreement or a compulsory pooling order heretofore entered by the division.

*Mayte Reyes* 4-7-17  
Signature Date

Mayte Reyes

Printed Name

mreyes1@concho.com

E-mail Address

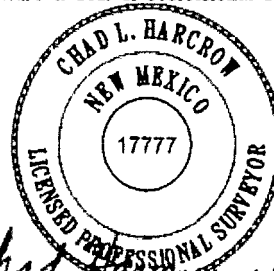
**SURVEYOR CERTIFICATION**

I hereby certify that the well location shown on this plat was plotted from field notes of actual surveys made by me or under my supervision, and that the same is true and correct to the best of my belief.

MARCH 30, 2017

Date of Survey

Signature & Seal of Professional Surveyor



*Chad L. Harcrow* 4/3/17  
Certificate No. CHAD HARCROW 17777  
W.C. # 17-363 DRAWN BY: SA